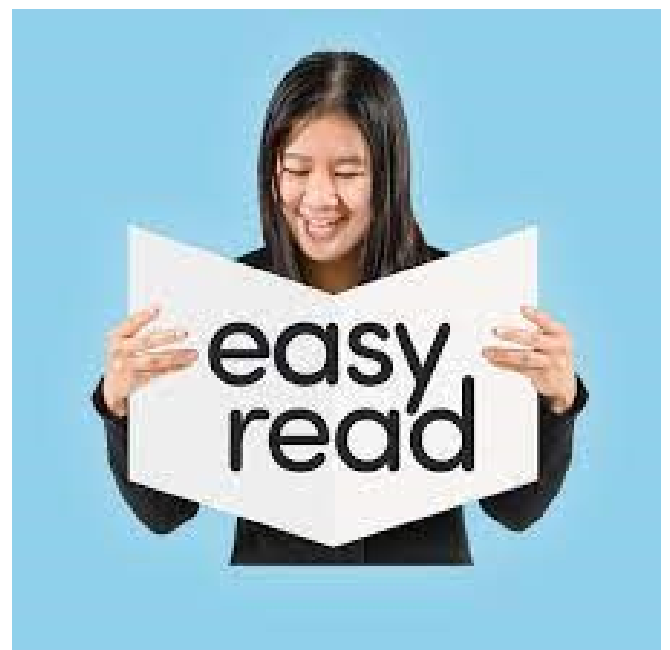




What is the Shropshire SEND Local Offer?



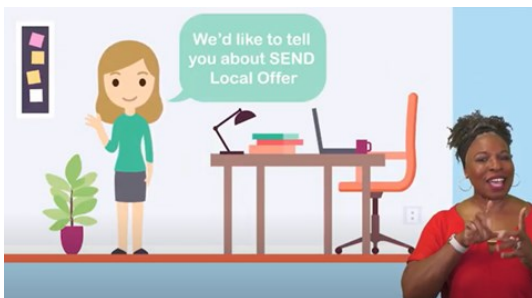


Shropshire SEND Local Offer

The Government asks Councils to have a website to share information and services for Special Educational Needs and Disabilities (SEND.)

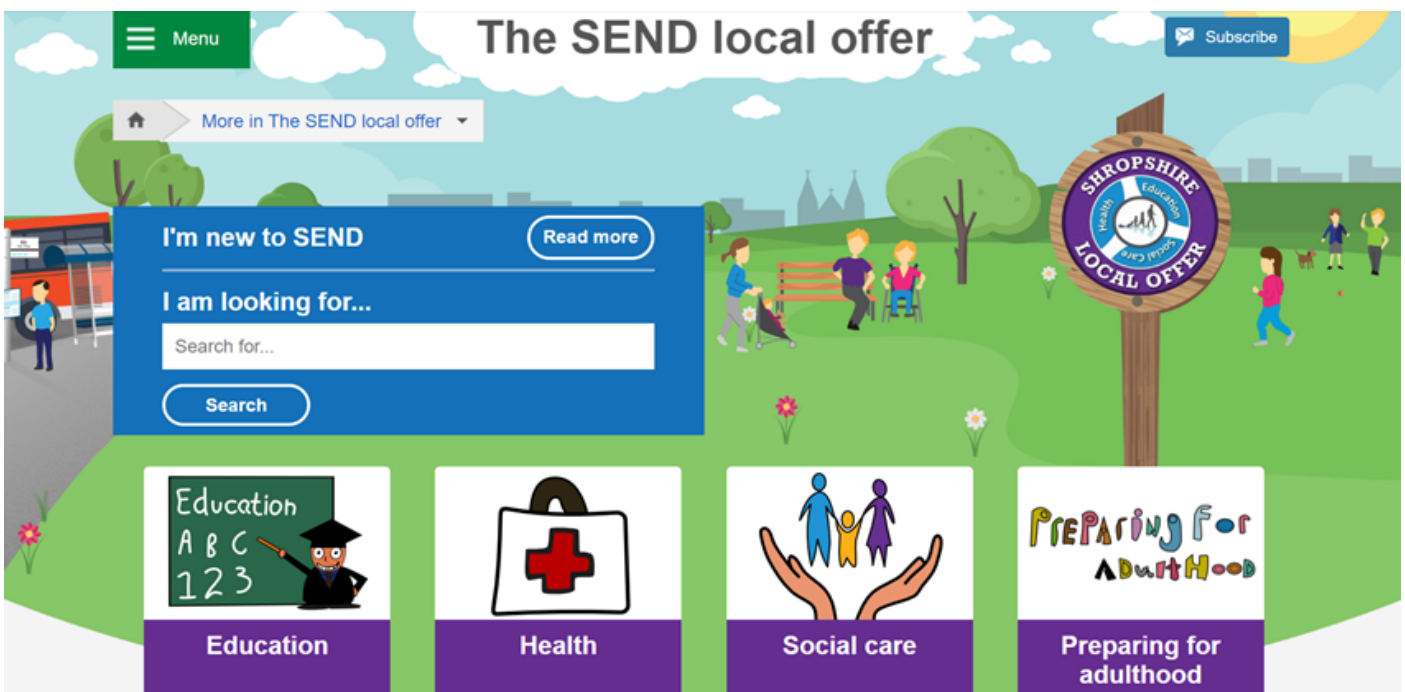


The SEND Local Offer is a single place for SEND information and services.



We have a [video](#) on our YouTube channel to tell you more about the SEND Local Offer.

This is the [SEND Local Offer Website](#).



You will find information about:



Education



Health



Social Care



Preparing for Adulthood



Money



Things to do and much more

The information is for:



Young People



Parents



Professionals

There is more information on our social media websites:

[Facebook](#)

[Twitter](#)



If you have any questions or need any further information:



You can email
local.offer@shropshire.gov.uk



You can phone
0345 678 9063

The SEND Local Offer

A single place for information and services for children and young people with special education needs and/or disabilities, their families and the practitioners who support them.

www.shropshire.gov.uk/the-send-local-offer/

The SEND Local Offer

Lots of information and support for children and young people with SEND and their families, including:

- Education
- Health and wellbeing
- Family support
- Social care
- Preparing for adulthood
- Early help
- Things to do
- Education, health and care plan (EHCP)
- Travel and transport
- Financial support

local.offer@shropshire.gov.uk 0345 678 9063
www.shropshire.gov.uk/the-send-local-offer/

If you need help accessing the Local Offer please speak to your school or local library.

Shropshire Council

