



## Investing in your town

### Shifnal Town Centre Public Realm & Traffic Improvements

Shropshire Council and Shifnal Town Council are very pleased to announce the upcoming start to the long anticipated improvement works to the town centre. The site compound will be set up from the 6<sup>th</sup> September and work is due to commence on the 13<sup>th</sup> September through to Autumn 2022. *Embargo periods\** will apply for Christmas from the second Monday in November to the Monday following the first week in January and Easter from Good Friday for ten days.

The geographical area of Shifnal has been subject to extensive housing development over previous years, circa 1100 dwellings have been built to date. The improvements to the town centre and public realm will enhance the existing infrastructure, by improving and, in some areas, reducing traffic flow and creating a more pedestrian friendly area that can be utilised for community events and support local businesses. The work scheduled comprises:

- Realigning and improving capacity at key town centre road junctions
- Road resurfacing and 20mph limit in the town centre
- Improving levels and widths of footway surfaces
- Hard and soft landscaping
- Tree planting
- Improved town centre materials and colour palette
- Improved street furniture, cycling provision and walking routes

\* *Please see “The Programme” section below for further detail on Embargoes*



Copyright: © 2021 Shropshire Council All rights reserved

E-mail: [strategic.highways@shropshire.gov.uk](mailto:strategic.highways@shropshire.gov.uk)

Website: [www.shropshire.gov.uk/shifnal](http://www.shropshire.gov.uk/shifnal)

## Scheme approvals

The project is a Category A project in the current Shifnal Place Plan. The scheme has been subject to public consultation, public meetings and was subsequently approved by the following groups:

- Shifnal Town Council
- Shifnal Members
- Shropshire Council Cabinet (7th December 2020)
- Shropshire Council Internal Infrastructure Group (IIG)
- Shropshire Council Highways and Transport

## Funding

The scheme is fully funded by Community Infrastructure Levy (CIL) funds and Developers' Section 106 contributions. The latter is already received and will fund the junction improvements and redesigned highway layout in the town centre. CIL funding will improve the town centre public realm and is considered an appropriate use of CIL funding in accordance with national legislation and guidance.

## The Programme

The Town Council have kindly permitted use of part of the Aston Street car park for the Contractor's site compound and the set up is due to commence on the 6<sup>th</sup> September with works physically starting on site the week commencing 13<sup>th</sup> September.

We are anticipating that the construction period will run through to the Autumn of 2022 which takes in to account the embargo periods when generally, works are not permitted on the lead up to Christmas and over Easter. The Embargoes are intended to prevent works (other than emergencies) that might impact on pedestrian and traffic flows but the programme will be assessed to see what can be realistically undertaken to make best use of the time available. Future newsletters will provide more information on progress, works coming up and key milestones as well as a general update on progress.

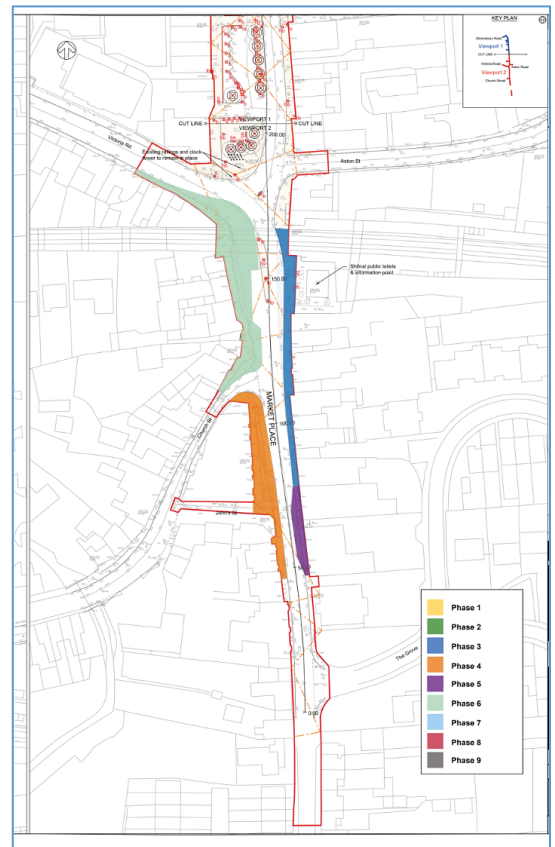
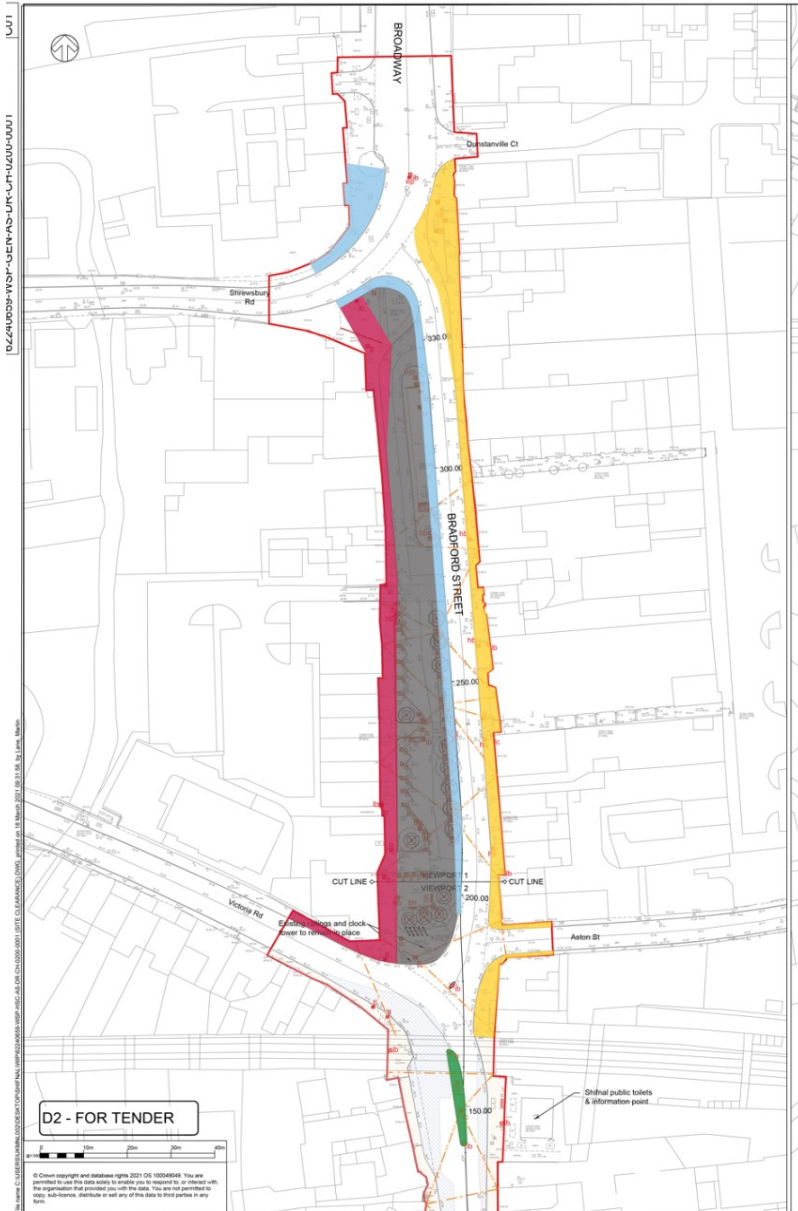


Copyright: © 2021 Shropshire Council All rights reserved

E-mail: [strategic.highways@shropshire.gov.uk](mailto:strategic.highways@shropshire.gov.uk)

Website: [www.shropshire.gov.uk/shifnal](http://www.shropshire.gov.uk/shifnal)

# Phasing of the works



Copyright: © 2021 Shropshire Council All rights reserved

E-mail: [strategic.highways@shropshire.gov.uk](mailto:strategic.highways@shropshire.gov.uk)

Website: [www.shropshire.gov.uk/shifnal](http://www.shropshire.gov.uk/shifnal)

# Phasing of the works continued \*Note, dates are indicative and subject to potential change

## Phase 1

**Sept - Oct 21** Site Clearance - Broadway/Bradford Street junction to Aston Street (East Side)  
Footpath reconstruction and installation of new bus shelter foundation  
Construct new carriageway footpath crossing feature paving  
Small amount of streetlighting preparation works  
New road gullies and drainage connections.

## Phase 3

**Oct - Nov 21** Site Clearance - Market Place (East Side) footpath running from the railway bridge to 1 Park Street.  
Footpath and layby reconstruction.  
Installation of new streetlighting equipment.

## Phase 5

**Jan 22 - Feb 22** Site Clearance - Market Place east side (outside no 5 Park Street)  
Construction of new footpath buildout area.  
Construct new carriageway footpath crossing feature paving  
Installation of new streetlighting equipment

## Phase 7

**Mar 22 – May 22** Site clearance including tree removal - Bradford Street West Side Victoria Road to Shrewsbury Road.  
Site clearance including tree removal.  
Footpath reconstruction  
Construct new carriageway footpath crossing feature paving  
Removal of redundant street lighting  
Removal of Christmas lighting suspension wires  
Installation of new street lighting equipment  
Construct new parking bays.

## Phase 9

**May 22 – Sept 22** Site Clearance - Bradford Street central paving area.  
Construction of new Public Realm Area  
New tree pits and landscape areas

## Phase 2

**Sept - Oct 21** Site Clearance - Market Street/Victoria Road Junction (West Side)  
Removal of existing splitter island flush to existing road surface.

## Phase 4

**Dec 21 – Feb 22** Site Clearance - Market Place (West Side) Church Street junction to Jerningham Arms Hotel.  
Road kerb realignment/Footpath reconstruction.  
Drainage repairs and ducting  
Paving to layby  
Installation of new streetlighting

## Phase 6

**Jan 22 – May 22** Site Clearance - Market Place west side Church Street Junction to Victoria Road  
Road kerb realignment/Footpath reconstruction.  
Construct new carriageway footpath crossing feature paving  
Part construction of new Belisha beacon crossing  
New footpath drainage channels  
Installation of new streetlighting equipment.

## Phase 8

**Apr 22 – Jul 22** Site clearance - Cheapside (existing footpath adjacent to business and shop frontages.  
Relay existing highway drainage and connections  
Construct new feature retaining walls  
Construct new footpath.





## What you can expect during the works

The Contractor will be issuing an introductory letter to all businesses and residential properties within the site boundary before works start. This will highlight useful contact details and provide a background to the company.

Whilst works of this nature are disruptive, every effort will be made to ensure businesses can continue to trade and accesses will be maintained throughout. Pedestrian and traffic marshals will be available each day to assist with directions for deliveries and ensuring that people can go about their day to day business safely.

The Contractor's Site Agent will visit premises within the site area on a regular basis to ensure all is in order, identify any issues or specific requirements that we may need to address and to generally ensure we are looking after your needs as best as we can. There is also the option to drop by the site office and talk to the Site Agent directly although it is advisable to make an appointment as there will be construction machinery operating and it will also be easier to facilitate a visit if these can be diarised.

Obviously with works of this nature, some of the operations are noisy but this will be minimised as much as possible and dust suppression measures will be used when cutting paving slabs and kerbs etc.

The work areas will be clearly defined and barriered off, pedestrian crossing points and walkways will be clear and accessible and access to premises will be maintained so businesses can continue to trade effectively and residents can access their homes.



Copyright: © 2021 Shropshire Council All rights reserved

E-mail: [strategic.highways@shropshire.gov.uk](mailto:strategic.highways@shropshire.gov.uk)

Website: [www.shropshire.gov.uk/shifnal](http://www.shropshire.gov.uk/shifnal)

## Communications

Newsletters will be issued on a regular basis to update on progress plus a look ahead at works to be undertaken. This will be particularly important as and when road closures are required for certain operations – details will be circulated well in advance, diversion routes publicised and there will be engagement with those directly affected so any appropriate mitigations can be put in place.

Shropshire Council's website will be updated with copies of newsletters, drawings and general scheme information. We will also use social media and press releases to get important messages out to the public and hard copies of newsletters will also be made available at the Library and certain businesses (to be confirmed).

The Contractors Site Agent and Project Director can be contacted via the details at the end of this newsletter and Shropshire Council can be contacted by emailing [strategic.highways@shropshire.gov.uk](mailto:strategic.highways@shropshire.gov.uk) [customer.service@shropshire.gov.uk](mailto:customer.service@shropshire.gov.uk) or by calling 0345 678 9000. Shifnal Town Council will also be providing important updates on their website and facebook pages via <http://www.shifnaltowncouncil.gov.uk/> and <https://m.facebook.com/pages/category/Government-Organization/Shifnal-Town-Council-277994998935963/>

The Town Council has also set up a Working Group and can be contacted via the Town Council office if there are queries or concerns. The Working Group, Shropshire Council and representatives from the Contractor and Consultant will meet on a regular basis so progress can be reported, queries raised and issues addressed so feedback can be provided to residents and businesses alike.

At a pre start Working Group meeting recently, a number of design queries were raised relating, for example, to the removal of pedestrian guardrails, removal and replacement of the signalised pedestrian crossings and vehicle movements from Market Place to Bradford Street. The design team are currently providing responses to the questions posed and these will be fed back to the Working Group shortly.



Copyright: © 2021 Shropshire Council All rights reserved

E-mail: [strategic.highways@shropshire.gov.uk](mailto:strategic.highways@shropshire.gov.uk)

Website: [www.shropshire.gov.uk/shifnal](http://www.shropshire.gov.uk/shifnal)

## How you can help us

Please respect our workers space and safety by driving carefully and slowly through the roadworks. Everyone is entitled to a safe workplace.

Our men and women work next to moving traffic and risk injury every day.

**Please only approach our site personnel if there is an absolute need to do so, and please ensure that you continue to observe current social distancing advice as it applies and as issued by the Government.**

## Emergency Contact Details

Andrew Dunham – Project Director McPhillips (Wellington) Limited: 01952 670440

Adrian Elsdon – Site Agent McPhillips (Wellington) Limited 07778 188027

Out of hours contact: 07778 188027 / 01952 670440

Shropshire Council – 0345 678 9000

Shifnal Town Council – 01952 461420 Office hours only, Monday to Friday

---

Thank you for reading this first newsletter. We hope you have found it helpful and informative. The team are very much looking forward to starting work to deliver these important improvements and working with the community to enhance the town centre environment.

For further scheme information please visit:

[www.shropshire.gov.uk](http://www.shropshire.gov.uk)



Copyright: © 2021 Shropshire Council All rights reserved

E-mail: [strategic.highways@shropshire.gov.uk](mailto:strategic.highways@shropshire.gov.uk)

Website: [www.shropshire.gov.uk/shifnal](http://www.shropshire.gov.uk/shifnal)