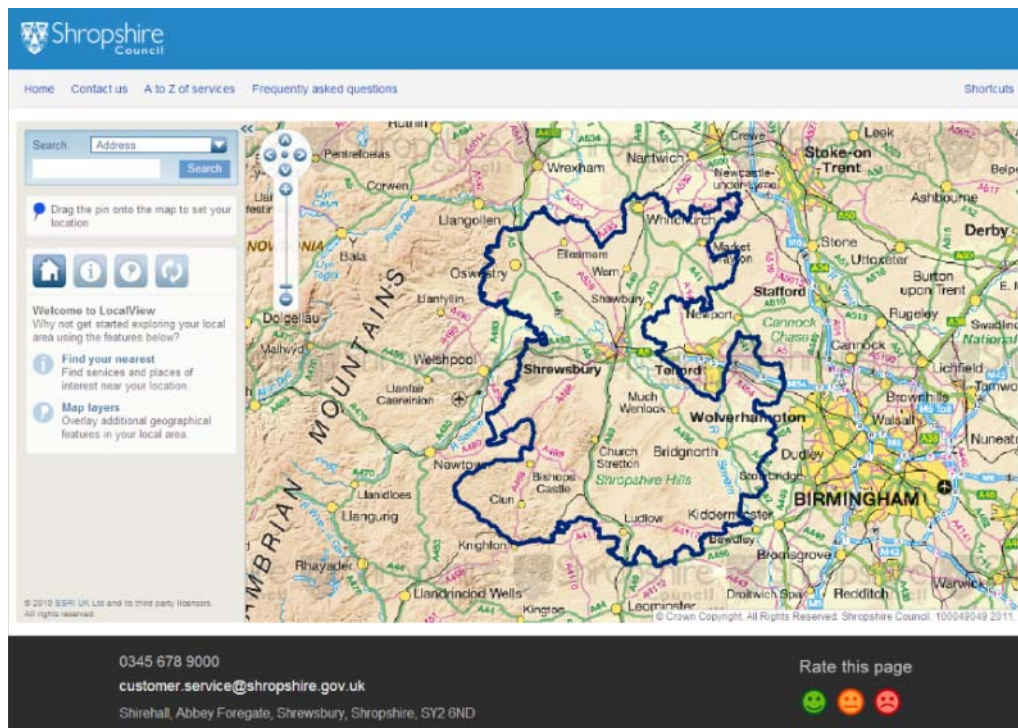


LocalView Internet User Guide

LocalView is an online map based service that provides access to a wide range of location based information.

Getting Started

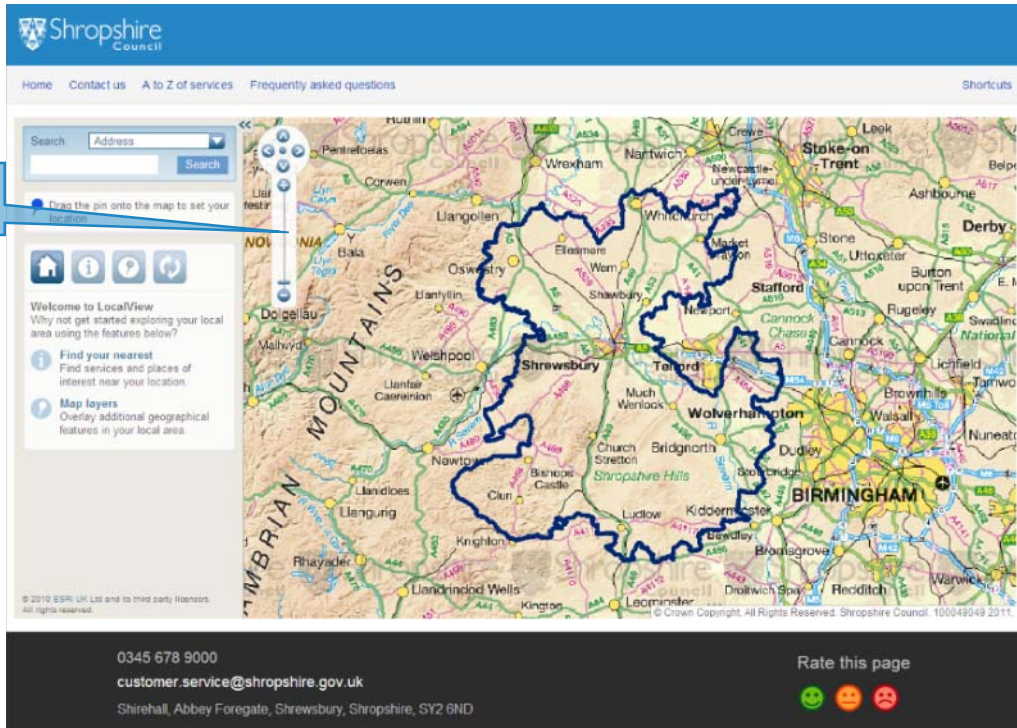
When you open **LocalView** you will see the screen below.



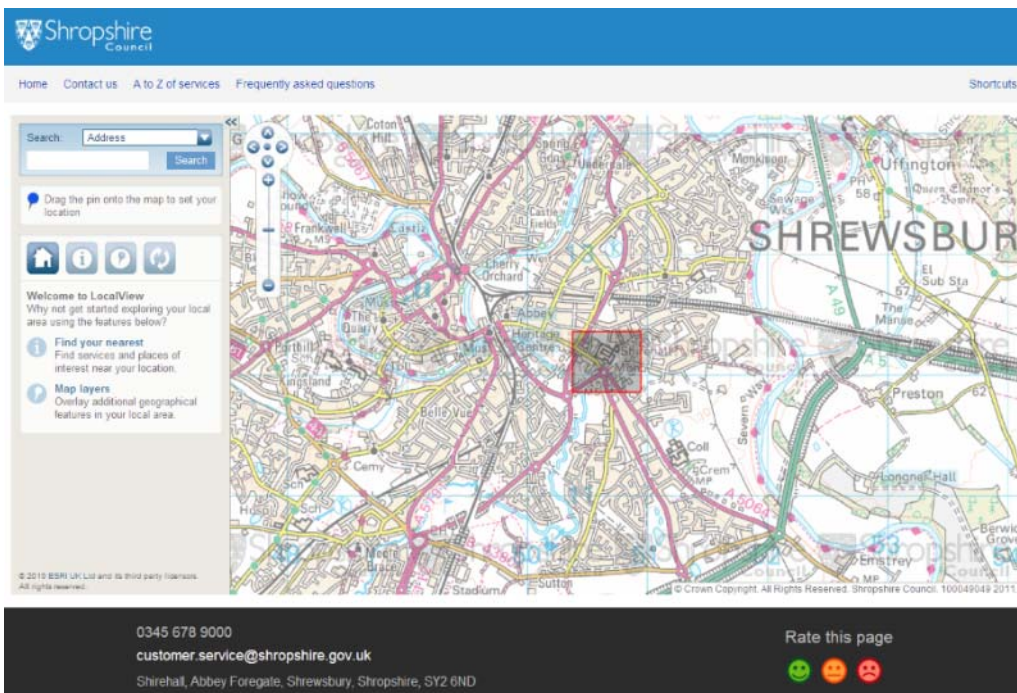
Moving around the map





There are two ways in which you can change your view of the map. Firstly, you can zoom. If you want to zoom in (+) and out of the map (-) you can use the zoom scale bar. The nearer you are to the (-) the more area you will see.

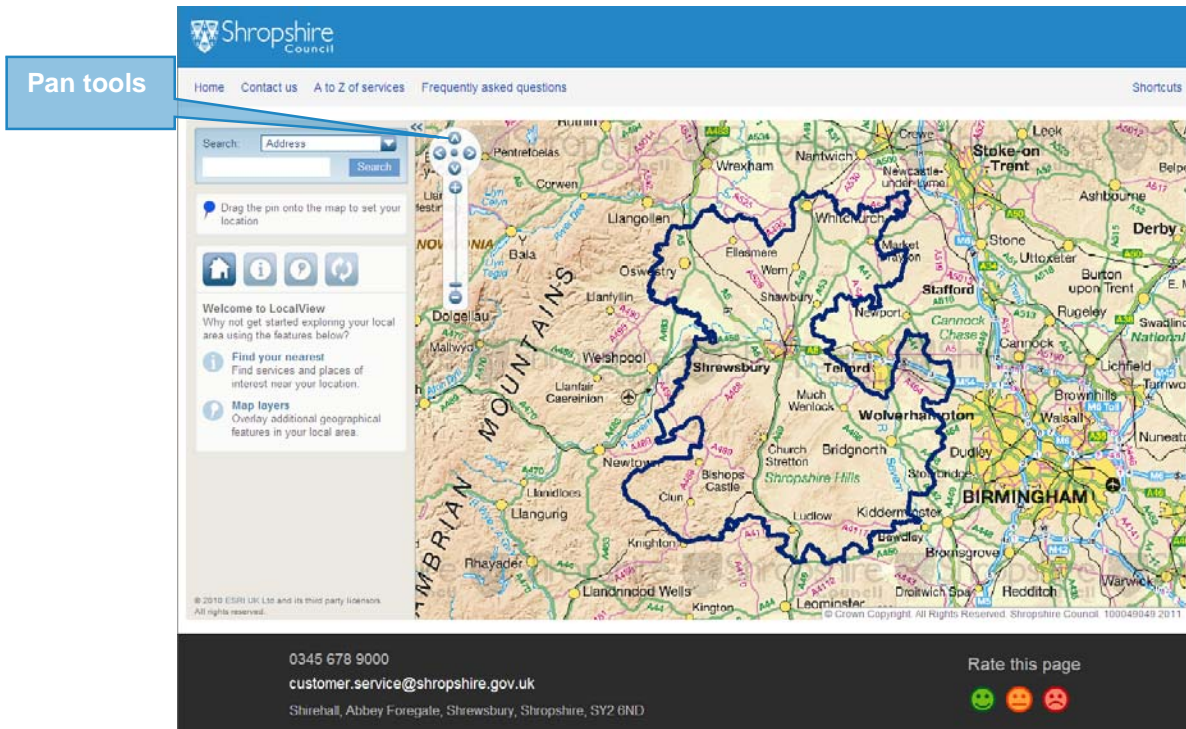
Zoom scale bar



In addition, if you hold the shift key down on the keyboard and draw a box around the area you require preferably starting at the top right of the box you will zoom to that area.



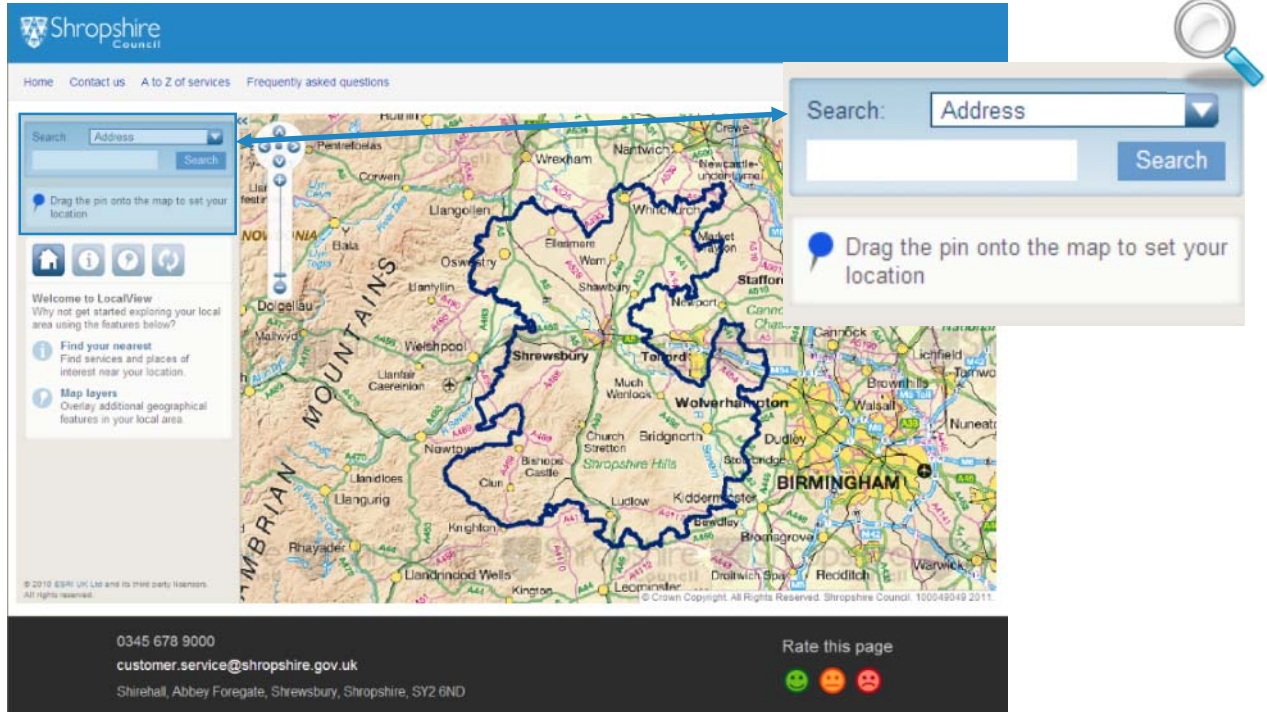
Secondly, you can use the 'pan' tools. If you need to shift the map in a North , South , East  or West  direction you can do this using the map controls. You can also simply 'pan' around by clicking on the map, holding and moving the mouse and then releasing the mouse when you are at the location you require.



The screenshot shows the Shropshire Council website's LocalView interface. A blue box labeled "Pan tools" points to the map navigation controls. The map displays the Shropshire region with a blue outline of the council's boundary. The navigation controls include a search bar, a "Search" button, and a "Drag the pin onto the map to set your location" instruction. Below the search bar are icons for home, information, and map layers. The map itself shows various towns and geographical features like the Shropshire Hills and the Birmingham area. At the bottom of the page, there is contact information: 0345 678 9000, customer.service@shropshire.gov.uk, and the address: Shirehall, Abbey Foregate, Shrewsbury, Shropshire, SY2 6ND. There is also a "Rate this page" section with three smiley face icons.

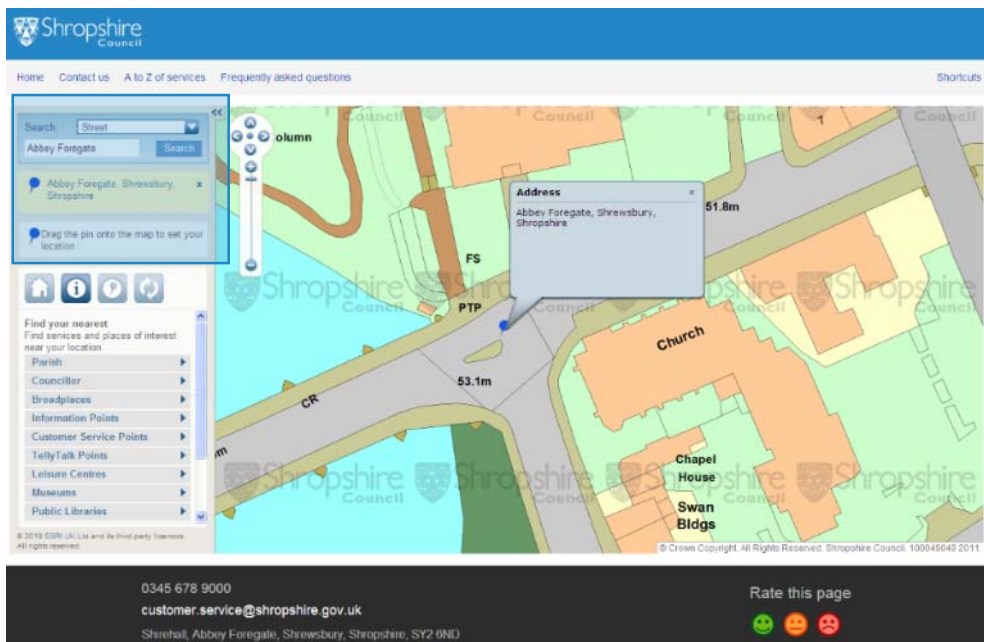
Selecting locations by searching addresses

You can select a location by typing in the address, part of an address, street or a postcode. To do this you need to select the search type from the dropdown list first.

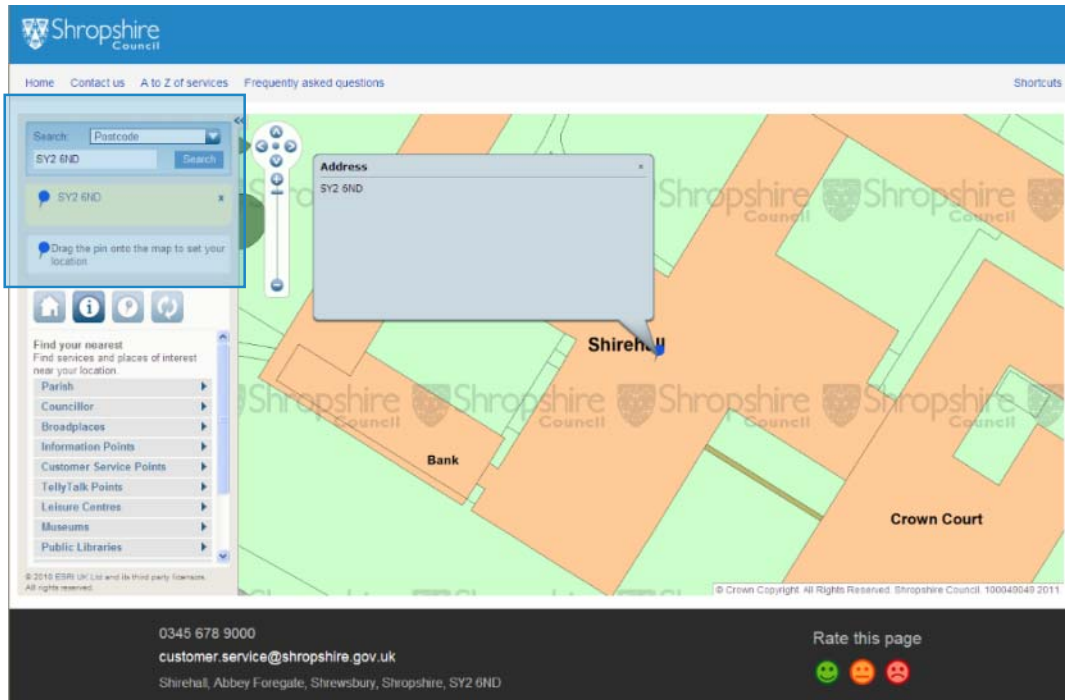


Using the example: - The Shirehall, Shrewsbury, SY2 6ND

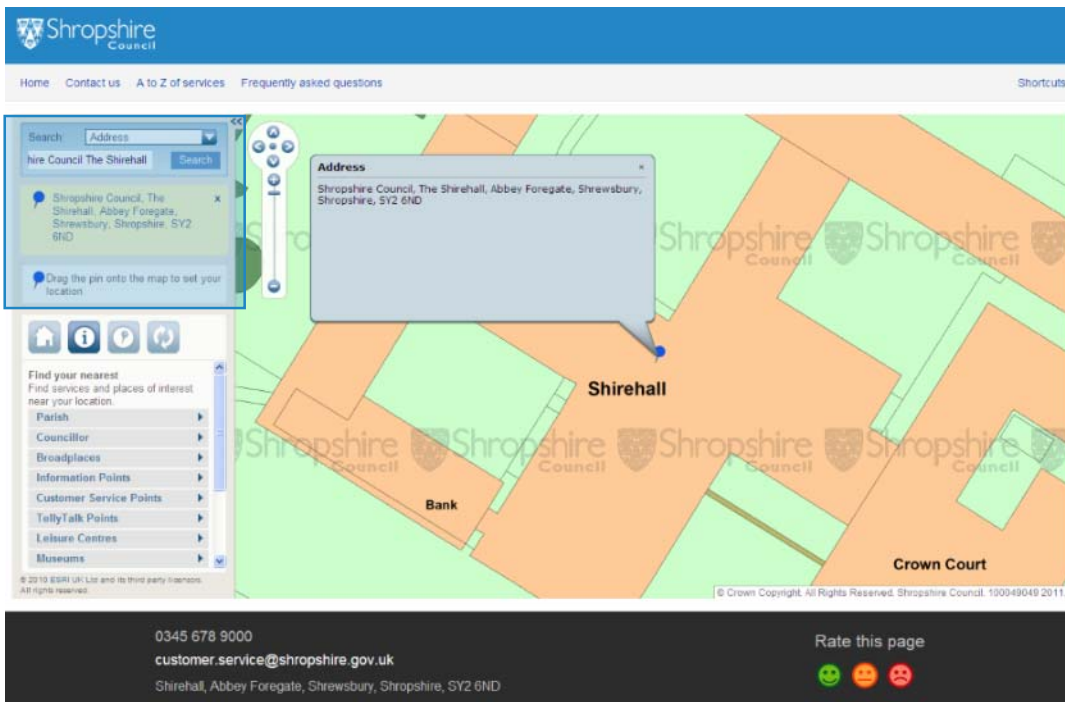
If you select search type **Street** and you type in Abbey Foregate (it is not case sensitive) it will return one street record called Abbey Foregate, Shrewsbury, Shropshire. You can now drag your pin to a location or property you are interested in on the map. To do this you need to click on the pin and drag to a point on the map and then release. The pin should remain on the map at that location.



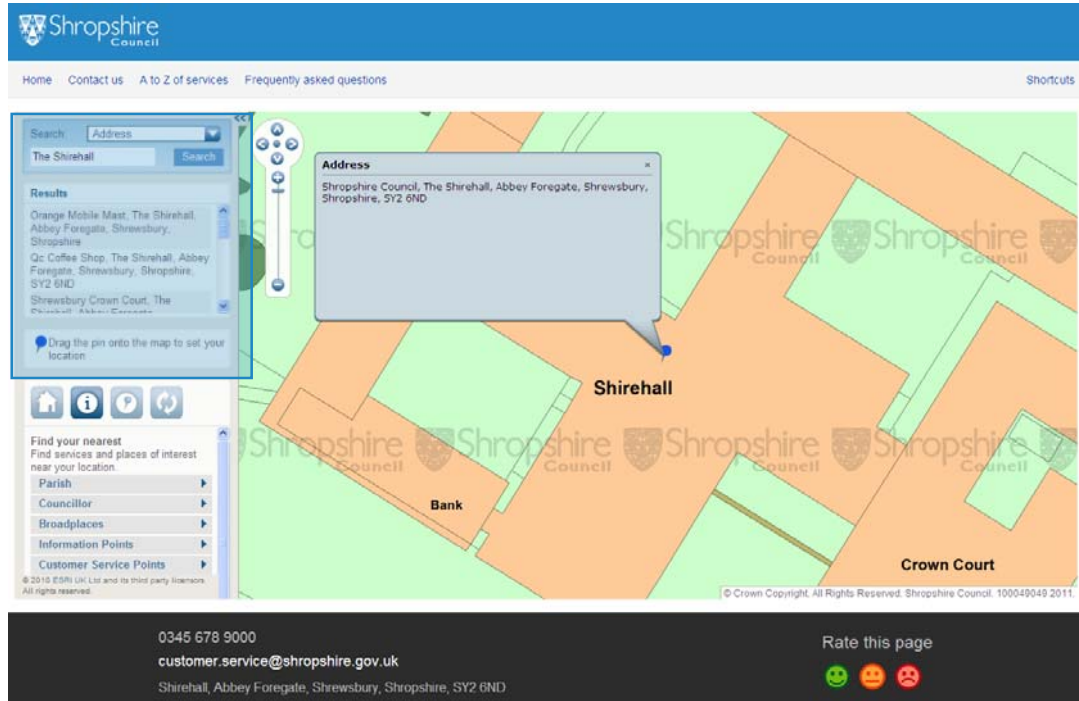
If you search for a **Postcode** and you type in SY2 6ND (again it is not case sensitive) it will return that particular postcode record. Again, you can now drag your pin to a location or property you are interested in.



If you search for an **Address** and type in Shropshire Council The Shirehall (again it is not case sensitive) it shows one record and if the map has not already zoomed to that address if you select the record it will then zoom to that property.



However, if you were to search for an **Address** and type in the Shirehall (again not case sensitive) it shows a number of records that have Shirehall in the address. By using the scrollbar you can select the property that is of interest to you and the map zooms in to that particular address.

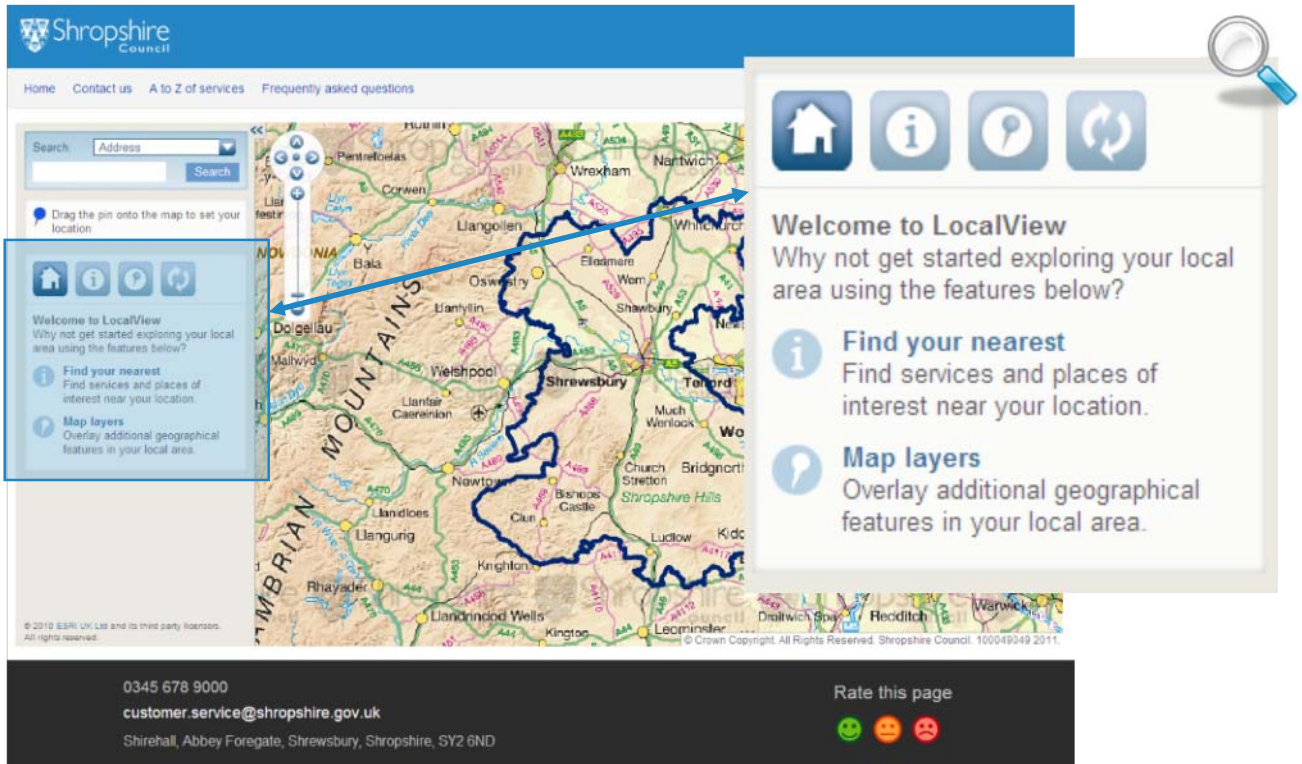


Tips: - If you are unable to find a particular address:

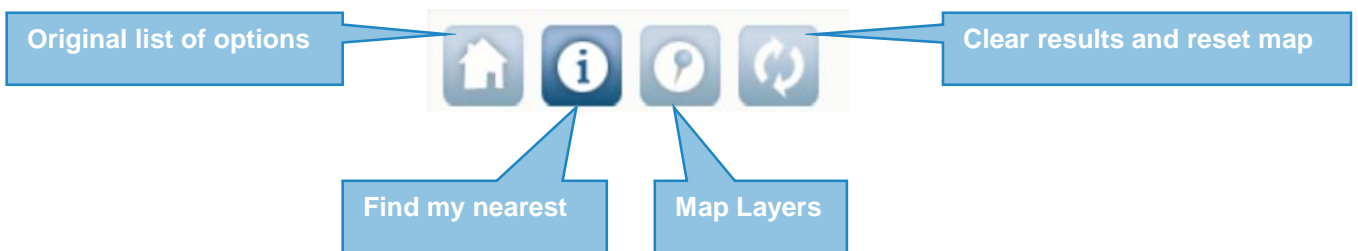
- ... Use a 'wildcard', typed as *. These can be used if you are not sure about a spelling or how an address would appear. These symbols can be used to replace numbers, letters and/or spaces.
- ... Use the Address search type, type in just the postcode and select the address from the list results of all properties with that particular postcode.

You will notice that your last map location is retained when you reopen LocalView. This is because it is making use of a cookie that stores a site preference.

LocalView is tailored to provide you with information about an area or a selected location.

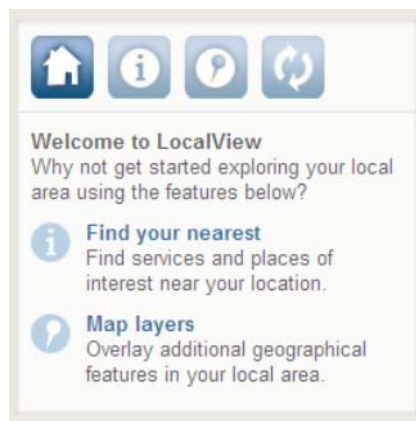


The tools to enable you to do this are outlined below



Original list of options

If at any time you click on this button you will see the following:

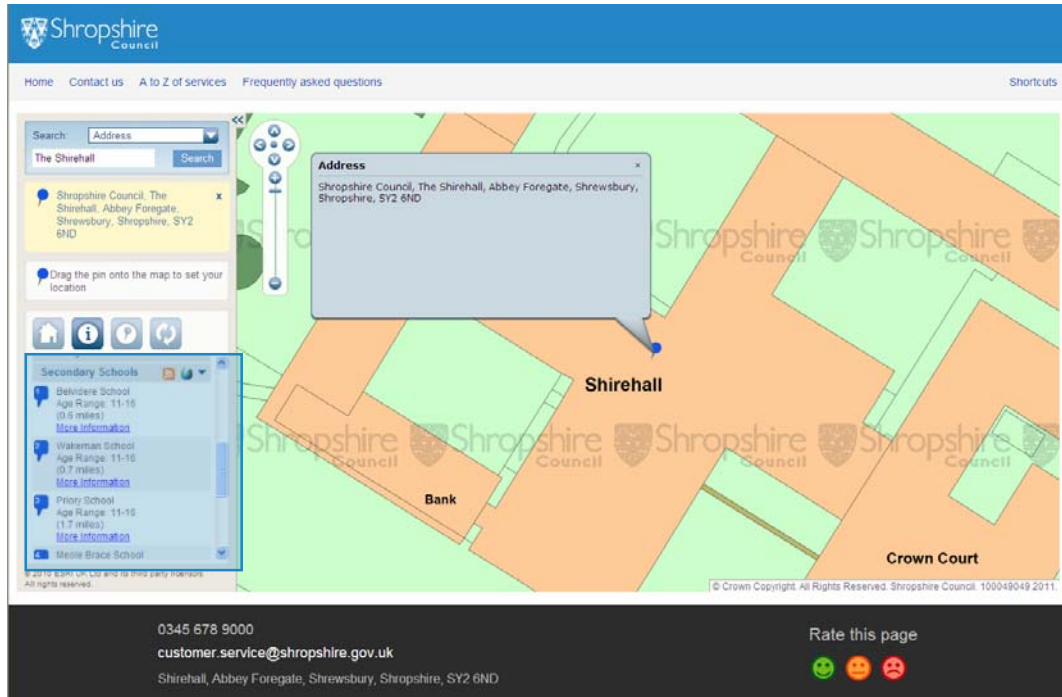




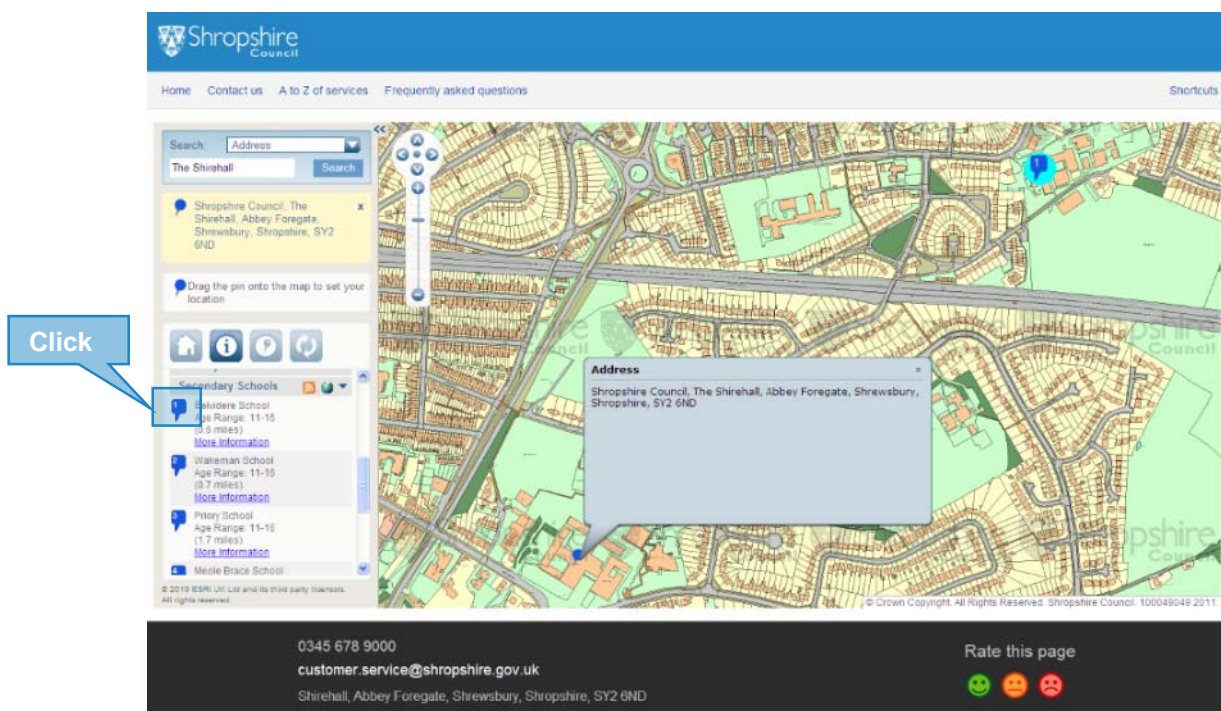
Find my nearest

This feature provides a quick indication of a range of services and amenities that are in close proximity to or in the area that is of interest to you.



If you are at a location that you have selected through an address search or via the drag pin facility you can select any of categories by clicking on the expand button ▶ and it will return results if applicable.

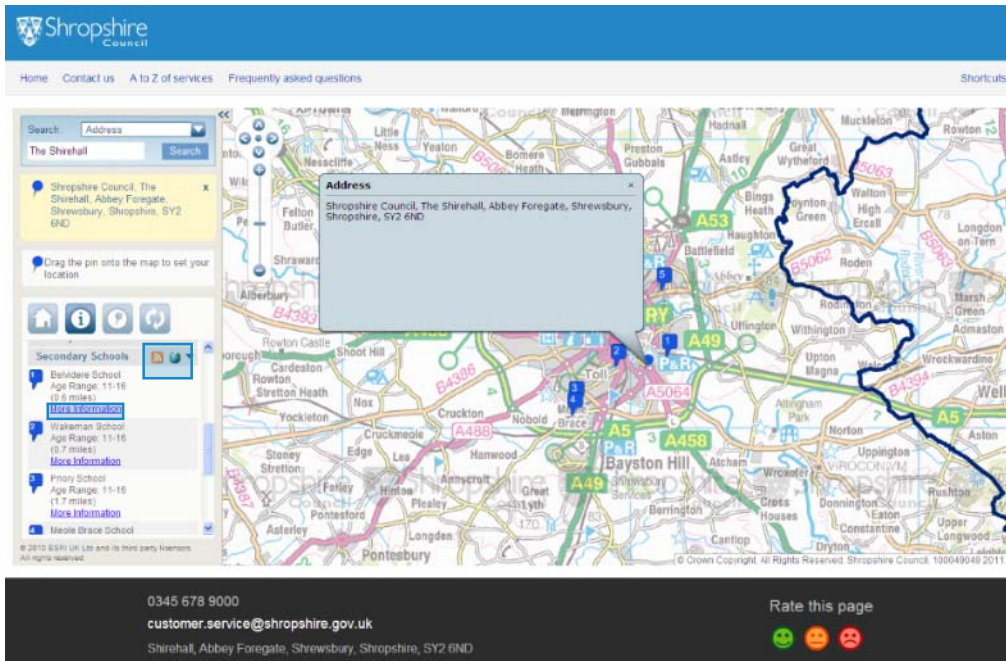


You can click on the result and it will go to that particular feature.



If you click on either of the following under each category:-

-  RSS Feed - a new window will open which allows you to subscribe to that particular category/feed. When you subscribe to feeds updated information is automatically downloaded to your computer and can be viewed in your browser.
-  Show all - the full extent of all returned results under that particular category will be displayed.



Under many of the categories there is [More Information](#). This is a link to a web page which opens in a new window that provides further information specific to that particular feature.

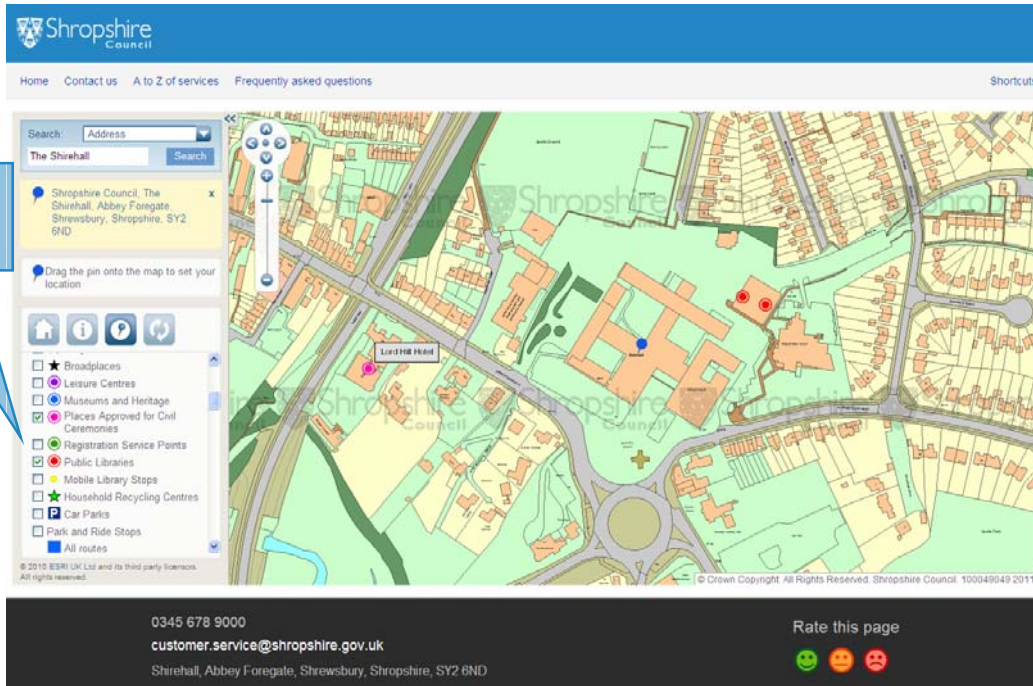
If you click on the expand button ▼ it will close the results from that category.



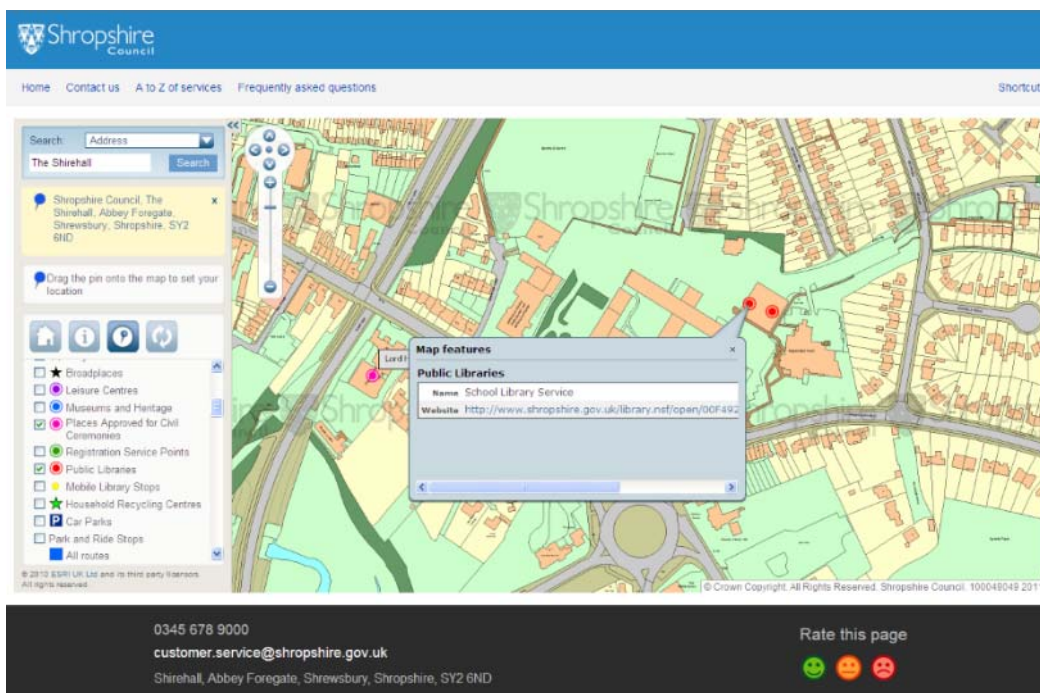
Map Layers

This is the list of all the location based data that is available to view. They are called layers of information. You have the ability to turn different layers on and off and have multiple layers on at any one time. This is simply done by placing a tick in the checkbox.

Layers turned on and visible on the map



You can click on any data that appears as a feature on the map and by doing so additional information comes up. This is the case for data under Find My Nearest and Map Layers.



Some data has a website URL starting with http. This is a link to a web page specific to that feature that will open in a new window if clicked.



Clear results and reset map

If at any time you click on this button you will return to the initial opening screen.

Shropshire Council

Home Contact us A to Z of services Frequently asked questions Shortcuts

Search: Address Search

Drag the pin onto the map to set your location

Welcome to LocalView
Why not get started exploring your local area using the features below?

- Find your nearest: Find services and places of interest near your location.
- Map layers: Overlay additional geographical features in your local area.

© 2010 ESRI, UK Ltd and its third party licensors. All rights reserved. © Crown Copyright. All Rights Reserved. Shropshire Council. 100049049 2011.

0345 678 9000
customer.service@shropshire.gov.uk
Shirehall, Abbey Foregate, Shrewsbury, Shropshire, SY2 6ND

Rate this page