

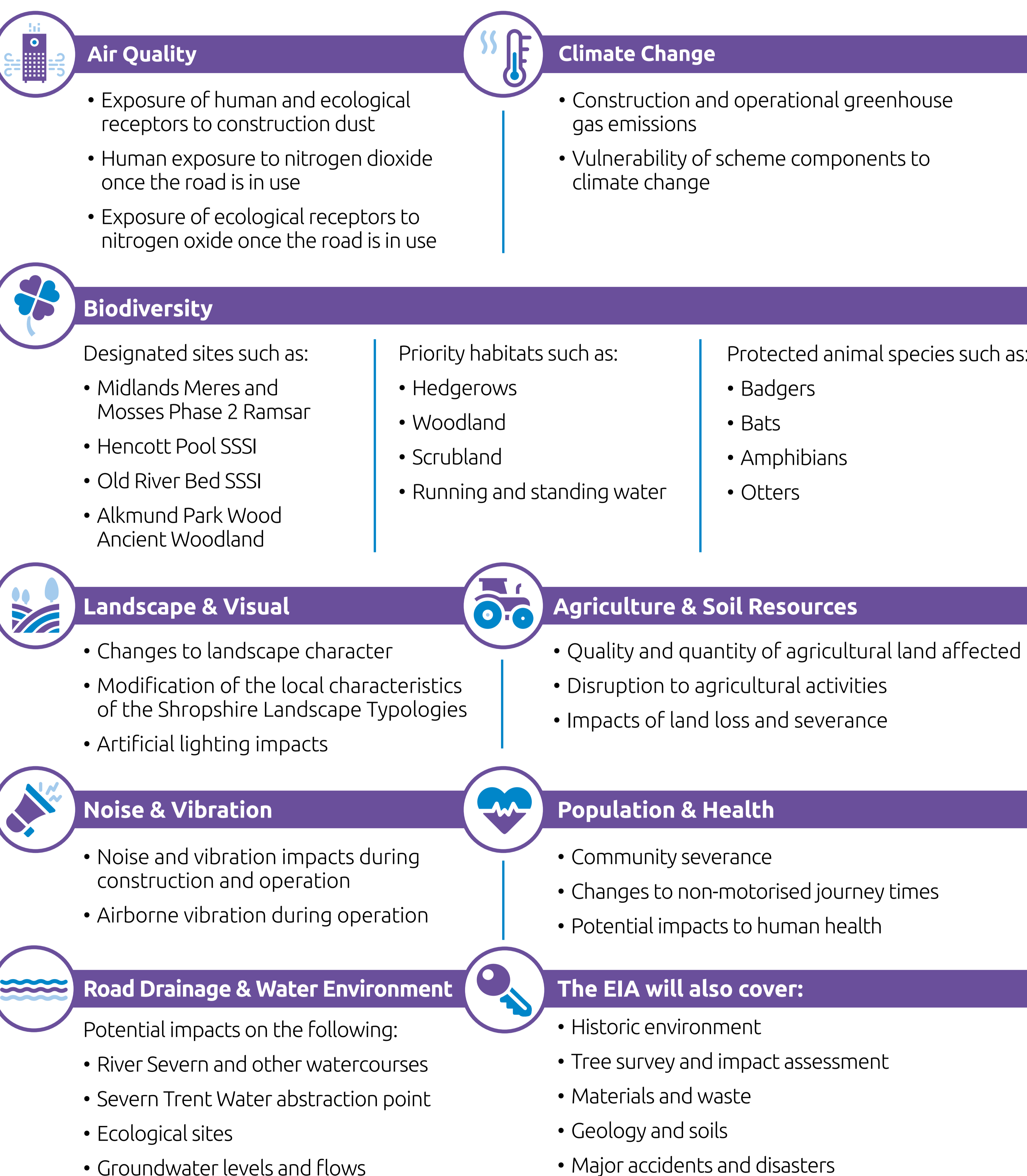
North West Relief Road (NWRR) Environmental Considerations

The Environmental Impact Assessment (EIA) will help Shropshire Council and the public understand the scale of potential environmental effects associated with the construction and operation of the North West Relief Road (NWRR). The Environmental Statement (ES) will summarise the findings of the EIA to inform the planning decision. The timeline is as follows:

STAGES	Scoping (the content of the EIA)	Preparation of the Environmental Statement (ES)	Submission of Planning Application and consultation	Decision Making
TIMEFRAMES	Submission of EIA Scoping Report: 28/10/2019	January to May 2020	Minimum 16 weeks from Planning Application	
	Receipt of Scoping Opinion: 28/01/2020			

Scope of Environmental Impact Assessment (EIA)

The scope of the EIA has been determined through consultation with statutory and non-statutory environmental bodies, and will include the following environmental elements:

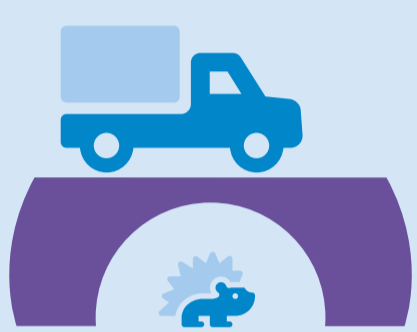

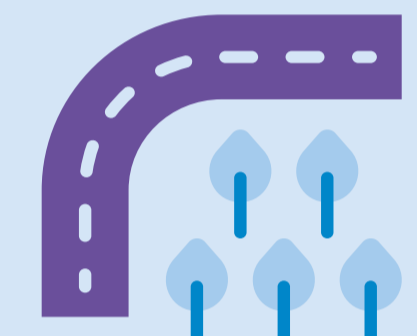


Establishing the Baseline


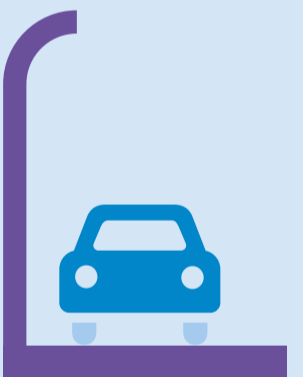
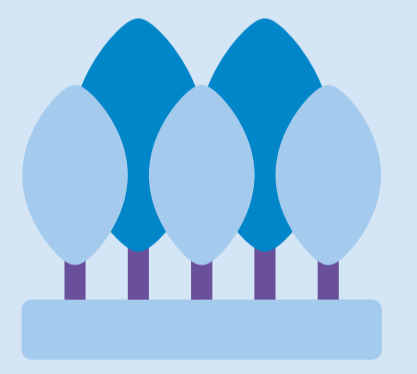
The environmental baseline within the site and the surrounding area is established during the EIA process. This is based on desk based studies and field surveys undertaken for an extensive range of topics e.g. air quality, ecology, historic environment, landscape & visual, and noise.

Indicative environmental mitigation measures

The following measures are already included in the design of the NWRR to **avoid** and/or **minimise** potential adverse environmental effects:

Provision of multi-species culverts (e.g. allowing badgers and bats to cross the scheme) along the route of NWRR 	Development of a landscape strategy to help integrate the NWRR within the landscape and enhance biodiversity value 
Highways realignment to avoid potential impacts on ecological sites and irreplaceable habitats 	Identification of opportunities to minimise the export and import of material resources 

The following mitigation are examples of measures which will be adopted to **minimise/rectify/reduce/offset** potential adverse environmental effects:

Implementation of traffic management and construction environmental management plans 	Provision of earth mounding or acoustic fencing where required 
Protection of retained trees during construction 	Construction timing to avoid disruption of nearby properties and notable species 