

North West Relief Road (NWRR) Route Visualisations

Below are a selection of visualisations of the NWRR. These are indicative artistic representations only.

Please view the NWRR Route Map banner for camera positions.



Drainage pond at Churncote roundabout
(Camera facing east)



Cycle/footbridge and embankment east of Shepherds Lane
(camera facing south east)



Clayton Way overbridge
(camera facing north east)



Holyhead Road roundabout
(camera facing south east)



Multi use underpass near Holyhead Road roundabout
(camera facing south west)



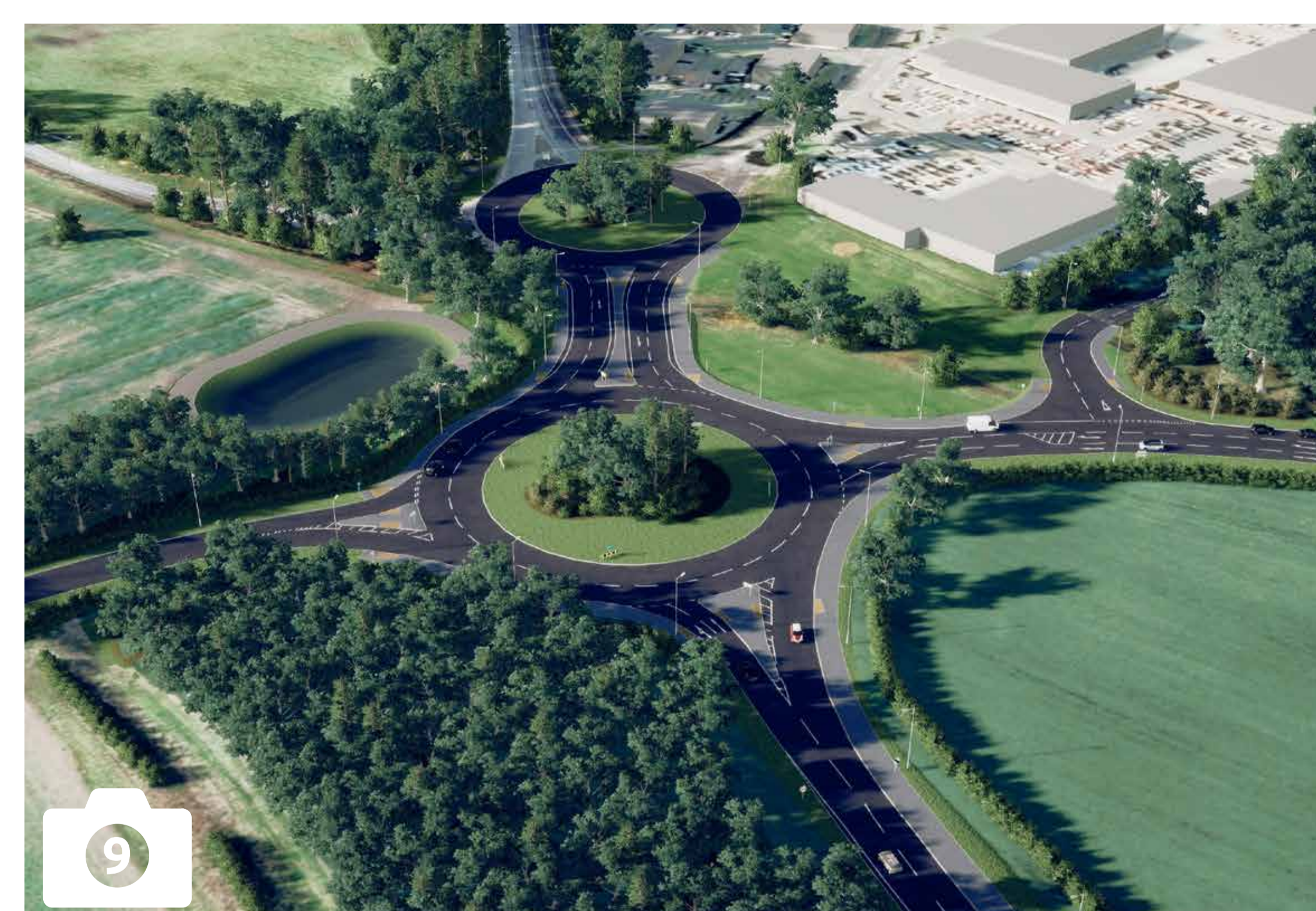
Berwick Road drainage pond
(camera facing north east)



Farm vehicle and Public Right of Way overbridge and separate Railway bridge
(camera facing north east)



South of Hencott Wood
(camera facing north)



Ellesmere Road dumbbell roundabout
(camera facing north east)