



Shropshire, Telford & Wrekin
Integrated Care System

Learning Disability and Autism Programme Vision

May 2021

Contents

Item	Page
Introduction and background	3
Learning Disability and Autism Programme Vision	4
How this vision will be used	5



Introduction and background

The Shropshire, Telford and Wrekin Learning Disability and Autism Programme has developed its overarching vision and principles. This is important as it provides focus, sets direction and unites everybody with where we want to get to as a local health and social care system. It also sets out what we want to achieve for and with people living with a learning disability and autistic people living with or without a learning disability across all ages.

This vision aims to align our work across health and social care in Shropshire, Telford and Wrekin. It provides a foundation for detailed strategies and plans where these are not yet in place or need to be updated.

How has this been developed?

The initial draft vision was developed using:

- Feedback provided to recent strategy work for both learning disabilities and autism, for adults and children, and across health and social care in Shropshire, Telford and Wrekin.
- Further feedback gathered directly from people with lived experience, families, carers and professionals.

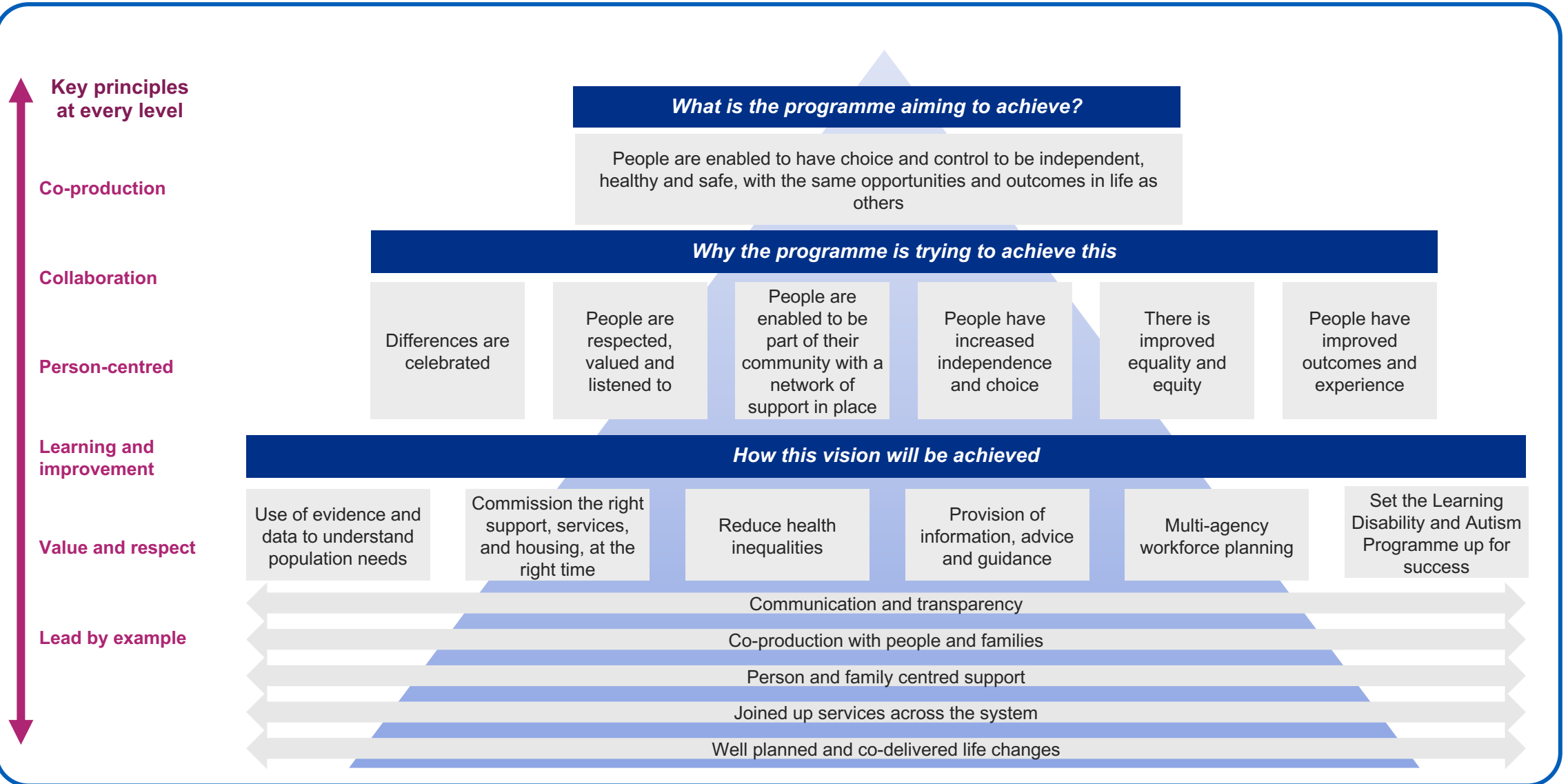
The draft vision was then tested through a wider engagement exercise to ensure it captured the right information, this was carried out through:

- A survey on the CCG website.
- Circulation via twitter.
- Direct feedback from representative groups and people with lived experience.

The feedback received was used to update the vision, which is presented on the next page. A separate easy read version of the vision is also available.



Our vision for people living with a learning disability and autistic people with or without a learning disability



How this vision will be used

This vision has been developed with the aim of aligning the work across the health and social care system in Shropshire, Telford and Wrekin for people living with a learning disability and autistic people with or without a learning disability. It sets out the principles of how we want to work and what we want to achieve.

It provides clear direction for the Learning Disability and Autism Programme to ensure it is focused on the right priorities.

What happens next?

It is planned that this vision **will be used as a foundation for the health and social care organisations** across the Shropshire, Telford and Wrekin system **to develop their detailed strategies and plans**, where these are not already in place or need to be updated.

These will:

- Be place based.
- Provide specific, separate plans for both Learning Disabilities and Autism.
- Provide specific plans for different age groups.
- Provide the necessary detail of what will be implemented, how and when.

