

Locality commissioning in Wem

Neil Willcox, Commissioning
Manager, Shropshire Council

4 July 2013

Becoming a commissioning organisation

In support of its transformation of services Shropshire Council will become a “commissioning organisation”. This doesn’t mean that all existing council services will be “outsourced” but it does mean that it will adopt a commissioning approach to the way that it works. A commissioning approach will ensure there is a clear basis of evidence, gathered from data, local knowledge and meaningful interaction with service users and customers before the council makes decisions with its partners on how it delivers or contracts services.

What do we mean by locality commissioning

- Working with communities to explore different ways of designing and delivering services which better reflect what is important to local people.
- Ensuring that services don't cost more than they should, are delivered by the best people to do the job, are tailored to the local community and support local jobs and economic growth.
 - *Focusing on the customer –*
 - *Better, Faster, Cheaper, Together and with a focus on prevention -*

Progress so far

- Church Stretton
 - Living independently for longer and falls
 - Public Realm
 - Unemployment
 - Transport
 - Early years services/childcare services
 - Affordable warmth
 - Libraries

Progress so far

- Oswestry
 - Substance misuse
 - Economic growth
- Shrewsbury, Monkmoor
 - Early Help
- Whitchurch
 - Hospital discharges and independent living
- Craven Arms
- Wem.....

What will our approach be in Wem?

- Agreeing governance arrangements
- Defining the area
- Building commitment and engagement across a broad range of people and stakeholders
- Building the picture and the evidence base
- Defining the scope
- Building the customer story
- Designing the prototype
- Implementing and evaluating the prototype
- Scaling up and sustaining the prototype

What do we want to do?

- To create a vibrant and inclusive town that has the potential and opportunity to thrive for its residents, businesses and victors
- To build social capital and networks that support the community needs.

What do we know?

Population by age group:

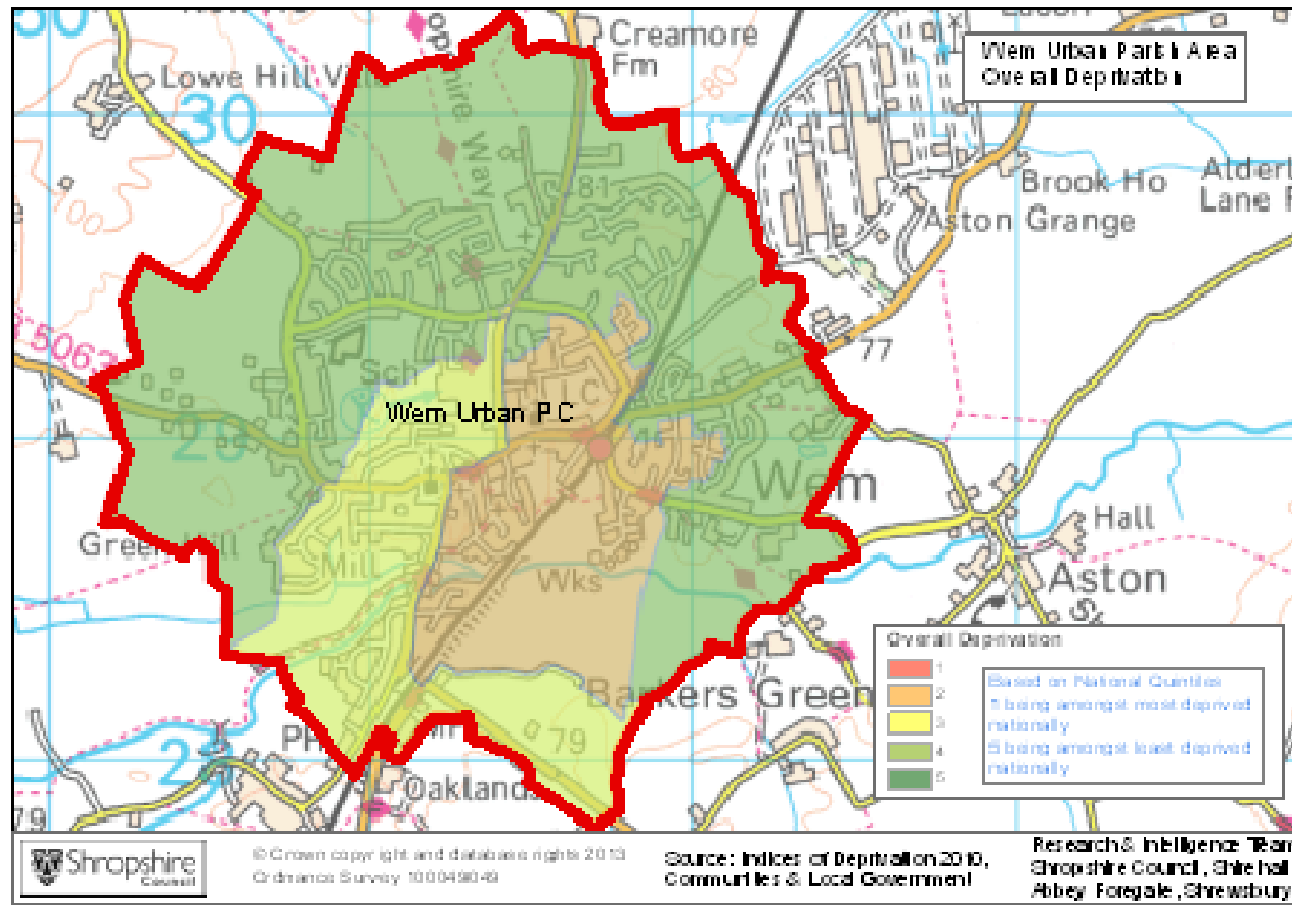
Under 16	947
Aged 16 -24	574
Aged 25 – 64	2,647
Aged 65 – 84	1,149
Aged 85 and over	255
Total	5,527

Significantly higher population aged over 65 than the national average

18% of all households are one person pensioner householders

What do we know?

Overall Index of Multiple Deprivation scores



What do we know?

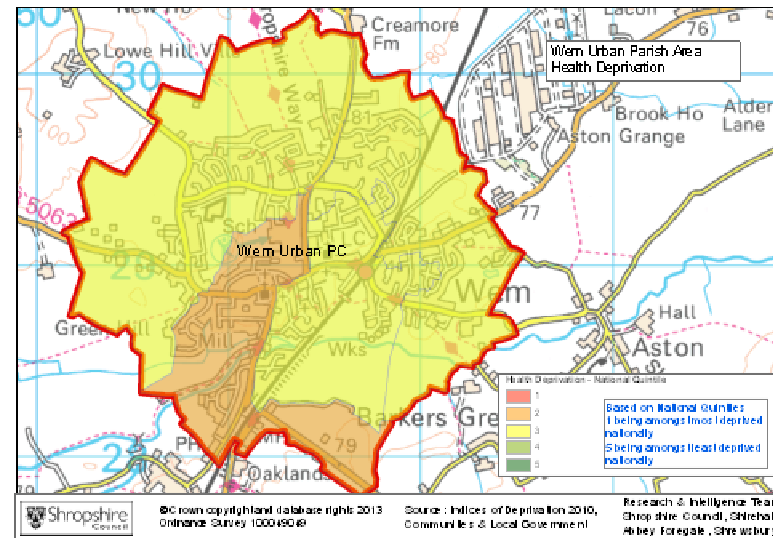
Economy:

- Empty shops, 20.4% (national average 9%); decoration of shop fronts/public houses and units above high street premises
- Economic activity rate, 19%; lower than Shropshire average primarily due to high nos who are retired, 19%
- High numbers of people with no formal qualifications, 27%, & high numbers in low skilled occupations, 22%
- Unemployment just higher than the Shropshire average, 3.7%; no of unemployed risen by 57% since 2001, mostly down to youth unemployment
- Education accounts for 23% of jobs; 16% work in health; loss of public sector jobs (public sector jobs dominated employment)
- Employment land

What do we know?

Health:

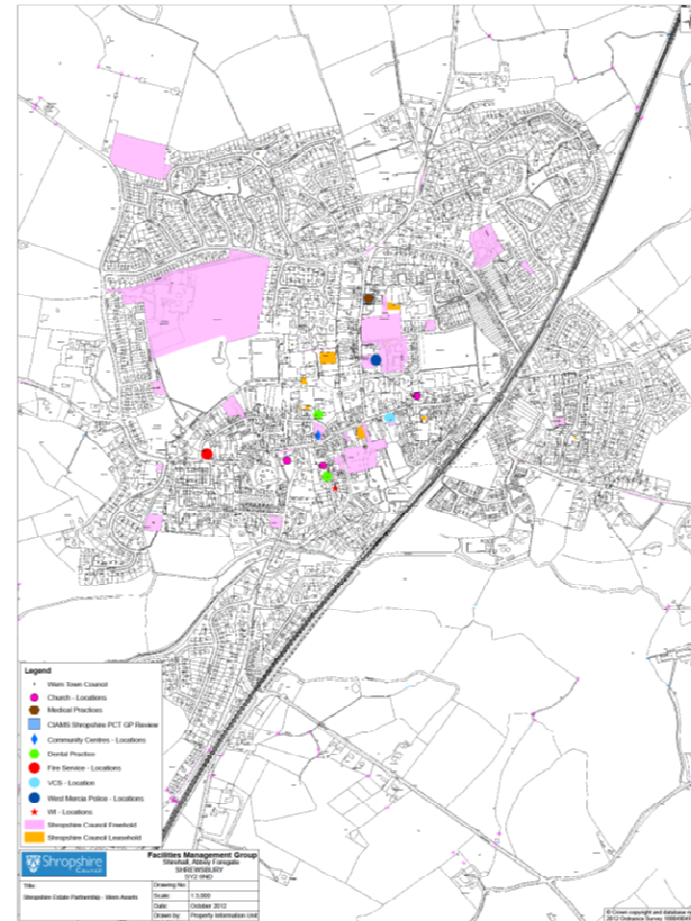
- Lower than national and Shropshire life expectancy for males (but not females)
- Hospital admissions for hip and knee replacements significantly worse than England



What do we know?

The “assets”:

- Sustaining the town Hall
- Sustaining leisure provision
- School provision
- Customer access point
- Empty shops
- Affordable houses
- Etc.



Thank you

Any questions?