



Shropshire Council
Legal and Democratic Services
Shirehall
Abbey Foregate
Shrewsbury
SY2 6ND

Date: Monday 28 January 2019

Committee:
Shropshire's Great Outdoors Strategy Board

Date: Thursday, 7 February 2019

Time: 10.00 am

Venue: Oswestry Room, Shirehall, Abbey Foregate, Shrewsbury, Shropshire, SY2 6ND

You are requested to attend the above meeting.
The Agenda is attached

Claire Porter
Director of Legal and Democratic Services

Members of Shropshire's Great Outdoors Strategy Board

Alex Carson-Taylor (Chairman)

Mark Weston (Vice Chairman)

Peter Carr

Lee Chapman

Sarah Faulkner

Ruby Hartshorne

Chris Mansell

Cecilia Motley

Stewart Pickering

Lezley Picton

Nigel Pocock

Ronald Repath

Jack Tavernor

Andrew Wood

Your Committee Officer is:

Tim Ward Committee Officer

Tel: 01743 257713

Email: tim.ward@shropshire.gov.uk

AGENDA

1 Welcome, Introductions and Apologies for Absence

2 Public Question Time

To receive any questions from members of the public, notice of which has been given in accordance with Shropshire Council Procedure Rule 14. The deadline for this meeting is 10.00am on 6 February 2019

3 Declarations of Interest

Members are reminded that they must not participate in the discussion or voting on any matter in which they have a Disclosable Pecuniary Interest and should leave the room prior to the commencement of the debate.

4 Minutes of the last meeting (Pages 1 - 6)

The minutes of the meeting held on 25 October 2018 are attached for confirmation

5 Local Transport Plan

To receive a presentation from Karl Hounsell, WSP on the findings of the consultation and the next steps.

Members are asked to discuss the implications of the new plan on priorities and delivery

6 Green Infrastructure Planning (Pages 7 - 14)

To receive a presentation from the Interim Head of Culture and Heritage on master planning aspirations for new developments.

A report which was taken to a meeting of the Place Overview Committee is attached for information

7 Ironbridge Power Station Site Development (Pages 15 - 16)

Anne Suffolk (Telford and Wrekin LAF) will lead a discussion about walking, cycling and riding aspirations for the Ironbridge Power Station redevelopment.

Chris Hill, Shropshire Council Economic Growth Team, will share the aspirations for the site from an economic growth perspective

Attached is a draft letter and members are asked to decide on whether a formal response should be sent from Board and T&W LAF.

8 Biodiversity Net Gain Consultation

To receive an update from Dan Wrench, Biodiversity Officer, Shropshire Council on the Biodiversity Net Gain Consultation

Members are asked to agree whether a formal response from the Board is required.

9 Shropshire Hills AONB and the Glover report

The Interim Head of Culture and Heritage will update members on the recent visit by Julian Glover and the Glover Review of Designated Landscapes in England. There has been some community discussion about the AONB becoming a National Park.

Members are asked to agree whether any actions are required at this stage

10 Local Plan Site Allocation Consultation

The Rights of Way Mapping and Enforcement Manager will give an update on the Local Plan Site Allocation Consultation

Members are asked to agree whether a formal response from the Board is required,

11 Rural Development and the Agriculture Bill

The Chairman will give an update on progress with the Transition Programme

12 Updates from Members

To receive short updates from Members on key activities/priorities/issues

13 Other Items

- Wild Teams Update
- Shropshire Riding and Carriage Driving Forum (The notes of the last meeting are to follow for information)

14 Date of Next Meeting

Members are reminded that the next meeting will be held on Thursday 6 June 2019 at 10.00am



Committee and Date

Shropshire's Great Outdoors
Strategy Board

7 February 2019

SHROPSHIRE'S GREAT OUTDOORS STRATEGY BOARD

Minutes of the meeting held on 25 October 2018

**In the Ludlow Room, Shirehall, Abbey Foregate, Shrewsbury, Shropshire, SY2 6ND
10.00 am - 12.06 pm**

Responsible Officer: Tim Ward

Email: tim.ward@shropshire.gov.uk Tel: 01743 257713

Present

Alex Carson-Taylor (Chairman), Mark Weston (Vice Chairman), Peter Carr, Stewart Pickering, Lezley Picton, Nigel Pocock, Ronald Repath, Jack Tavernor and Andrew Wood

49 Welcome, Introductions and Apologies for Absence

49.1 The Chairman welcomed everyone to the meeting.

49.2 Apologies for absence had been received from Sarah Faulkner, Chris Mansell and Cecilia Motley

50 Public Question Time

50.1 The following question had been received from Trevor Allison

Does the Strategy Board feel it should request the Highways and Rights-of-Way Department to resist any large-scale closure of foot crossings as hinted at in this e-mail? ((See below).

Shropshire's extensive and well-used network of Rights-of-Way would be considerably damaged if any programme of closures of this nature were to take place. It would be acceptable for some very minor changes or rationalisation to take place, but being somewhat acquainted with the Health and Safety Regulations under which Network Rail currently administer foot crossings of the railway (I have been out with a Network Rail Officer on more than one occasion when he was assessing the safety parameters of various foot crossings near to Shrewsbury) there is no justification for a wholesale closure of such crossings. I would ask the Outdoor Partnerships Department within which the Rights-of-Way Department functions to confirm that they will, if at all possible, resist all requests or demands from Network Rail to implement such a policy.

Subject: NETWORK RAIL LC CLOSURES

Dear All,

You may soon feel the effects, if you haven't already, of Network Rail's policy to close all level crossings in the country and carry public rights of way over them.

Highway authorities are pressured by Network Rail into stopping up paths at level crossings by applying for Temporary Traffic Regulation Orders (TTROs) - usually on "safety grounds"

This is the first wave of attacks on PROWs and local authorities, being strapped for cash, do not want to enter legal fights so have given way to Network Rail's demands. They also extend the TTROs - with permission from DfT - so that the "temporary" Orders in effect become permanent.

The second wave of attack is to launch Transport & Works Act Orders to obtain planning and compulsory purchase permission to permanently close crossings and divert paths in the interests of "public health and recreation" (making people walk etc. further benefits health!)

I urge you to consider writing to the DfT to complain about any use of TTROs by Network Rail in your area. (If you don't already get notified of them by your LA, ask them to do so now!)

I attach my letter to Chris Grayling the Secretary of State for Transport in case it helps.

Malcolm Lees
LC for Essex

Mr Allison commented that there was a programme of closures of crossings in Essex, Norfolk and Suffolk and that he was worried that this would set a precedent for the rest of the country. He urged the Strategy Board to support the Rights of Way department in resist wholesale closures of crossings.

The Mapping and Enforcement Manager commented that the situation in Shropshire was very different and that the Rights of Way team had a very good relationship with Network Rail and worked actively with them to improve crossings. She added that the team would resist wholesale closures if they were proposed, but would prefer to work with Network Rail on a case by case basis.

Members of the Board supported this approach

51 Declarations of Interest

51.1 There were no declarations of interest.

52 Minutes of the Last Meeting

52.1 The minutes of the meeting held on 11 June 2018 had been circulated.

52.2 Resolved:

That the minutes of the meeting of the Shropshire great outdoors Strategy Board held on 11 June 2018 be approved as a true record and signed by the Chairman

53 Actively Improving Lives

53.1 The meeting received a presentation (copy attached to the signed minutes) from Chris Child, Chief Executive of Energize County Sports Partnership, in which he gave an update of the work currently being carried out by the Partnership.

53.2 Members made the following comments: -

- Need ongoing dialogue with Town and Parish Councils who may be a source of funding and also of volunteers.
- People who live in rural areas have less access to outdoor recreation sites and this needs to be built in to the Local Plan.

53.3 The Director of Place commented that the Local Plan would be fundamental in ensuring access to outdoor recreation, and that there was need to work with Town and Parish Councils who were carrying out Neighbourhood Plans to ensure that sites were identified. He added that there was work needed to unlock capacity for volunteering.

53.4 The Chair thanked Mr Childs for his presentation

54 Shropshire's Economic Growth Strategy

54.1 Members received a presentation (copy attached to the signed minutes) from Matt Potts, Business Growth and Investment Manager, Shropshire Council which gave an update on the Council's Economic Growth Strategy. He advised the meeting that the aims of the strategy were to support and grow new and existing businesses, attract inward investment and develop and retain talent and skills and that by 2021, the Council was aiming for 12% growth, 3,700 new jobs, £300 million private sector investment and 1,375 new homes per year

54.2 The Chairman asked how 12% growth would be achieved. The Business Growth and Investment Manager advised that the growth would come from a number of areas and that growth in a number of sectors was key to achieving this target.

54.3 The Chairman asked whether relief from commercial rates could be used to encourage investment. The Business Growth and Investment Manager commented that it was one of a number of things that were being considered as part of a toolkit.

54.5 in response to a question the Business Growth and Investment Manager advised that work was ongoing within the local plan review to identify key employment sites.

54.5 The Chairman thanked the Business Growth and Investment Manager for his presentation

55 Agriculture Bill

- 55.1 The Chairman gave an update on the Agriculture Bill that was currently going through Parliament. He advised the meeting that the bill was in committee stage and that the Bill Committee had asked for written submissions of evidence.
- 55.2 The Chairman advised that it was proposed that rural development would be split between DEFRA and the Department for Business and that it was thought further delivery would be through the LEPs
- 55.3 Mr Tavernor commented that there was still a lot of detail missing from the bill.
- 55.4 It was agreed that the Board should make a submission to the Call for Evidence and that the Chair a small group would formulate this

56 ADEPT National meeting feedback

- 56.1 The Mapping and Enforcement Manager updated Members on a meeting of the PROW group of Adept that she had recently attended. She advised that the following had been discussed:
- Deregulation Bill – would be coming forward in summer 2019. The working group would be meeting in November to discuss this further
 - PINS were currently updating their guidance leaflets
 - Network Rail – The new regional MOUs were now in place.
 - Highways England representative was to be invited to the next meeting of the group

57 Updates from Members

- 57.1 There were no updates from Members

58 Other Items

58.1 Walking for Health

The Outdoor Partnerships Manager advised that work was ongoing with volunteers to make the groups more self-sustainable. She informed members that a letter had been sent to the Director of Public Health regarding future funding, and that she had been advised the funding from the public health budget would cease in 2020, and that she was currently investigate other sources of funding.

58.2 Wild Teams

The Outdoor Partnerships Manager commented that she was currently working with health partners to source funding for the Wild Teams scheme, and that she was working with health partners to formulate a lottery bid for funding to evaluate the benefit of the scheme. She added that the new mental health director for the CCG was keen to see the scheme continue.

58.3 ROW User Leaflet

Members thanked Shona for her work in updating the leaflet.

58.4 Members noted the minutes of the Shropshire Riding and Carriage Driving Forum

59 **Agenda Items for Future Meetings**

59.1 Members were asked to feed suggestions for future agenda items to the Outdoor Partnerships Manager

60 **Date of Next Meeting**

60.1 Members were reminded that the next meeting of the Shropshire's Great Outdoors Strategy Board would be held on Thursday 7 February 2019 at 10.00am

Signed (Chairman)

Date:

This page is intentionally left blank



Committee and Date

Place Overview Committee
15th Nov 2018

Item

Public

FUTURE PROPOSALS FOR GREEN INFRASTRUCTURE PLANNING

Responsible Officer

Mark Blount

e-mail: Mark.blount@shropshire.gov.uk

Tel: 01743 255096

Summary

All residential developments are required to contribute to community infrastructure needs such as Public Open Space (POS). Current POS provision is set out within planning policy for each development to provide 30m² of POS per bed space provided. Each planning application is required to meet this policy, however in reality, only developments of 10 houses or more are assessed to provide the 30m² provision, or to make a financial contribution towards other local POS sites.

The outcome of this is that developments are providing POS that have no connectivity to other open space provision and are not informed about the type of green infrastructure required by the local community within the area. This is because each residential development planning application is considered on the development boundary only and does not take account of the wider environment and any linkages to other types of open spaces.

To address this issue, the Council, as part of the Local Plan Review, is developing a green infrastructure mapping system that will assess local community green space needs on a wider catchment area, rather than just on individual development boundaries. The intention, once the agreed land allocations have been confirmed through the Local Plan Review, is to master plan the green infrastructure needs for each area and where it should be located to ensure all new residents have access to green open space. This will provide developers with clearer guidance as to what type, amount, quality and connectivity of open space is required within or around their proposed sites that will meet future open space standards.

Background

The unitary authority of Shropshire Council came into being in 2009 and as such became the Planning Authority for the County of Shropshire. Before this planning matters were undertaken by 5 Borough & District Councils and Shropshire County Council. With regards to open space provision each Borough & District Council had its own local plan policies and standards set out below, to meet the then planning policy guidance note PPG17.

Previous open space standards

	Oswestry	North Shropshire	Shrewsbury & Atcham	Bridgnorth	South Shropshire
Supplementary Planning Documents	None	None	Oct 2000	June 2007	April 2005
Thresholds	10+	Implied No threshold	Implied 5+	5+	No threshold
Amenity / Informal open space	30-40m ² per dwelling (3 person) (=10-13m ² per person)	0.8 ha / 1,000 pop (=8m ² per person)		5m ² per person	0.2 ha/ 1,000 pop (=2m ² per person)
Equipped play	5m ² per dwelling minimum (=1.7m ² per person)	15m ² per family dwelling (= 5m ² per person)		3m ² per person	
Outdoor sport / playing fields	40m ² per dwelling (=13.3m ² per person)	1.6 ha / 1,000 pop (= 16m ² per person)		16m ² per person	
Open space (general)			2,43 ha/1,000 pop		2.4 ha/ 1,000 incl 0.2 above (=24m ² per person)
Standardised m ² per person	25-28m²	29m²	24.3m²	24m²	24m²

Prior to unitary status a comprehensive local assessment of all types of open space provision was conducted by consultants in 2008 and 2009, on behalf of all the Shropshire Councils. These “PPG17 studies” provided an up-to-date and robust evidence base for determining local needs and setting locally derived standards. [..\2010 Developer contributions SPD Pre Unitary\13\) Summary and Strategy Framework FINAL.doc](#) . These replace the previous standards, variously set in the five Local Plans, detailed above.

The 2009 report was subsequently used by Shropshire Council to inform their Open Space Interim Planning Guidance (2012). However, in the period between 2009 and 2012 Shropshire Council needed to have a standard policy for POS. As Bridgnorth District Council (BDC) had the most recent open space interim planning guidance [..\2010 Developer contributions SPD Pre Unitary\Bridgnorth Open Space Interim Planning Guidance.doc](#) this was adopted into Shropshire Council’s POS Interim Planning Guidance (IPG) 2010 [..\2010 Developer contributions SPD Pre Unitary\Shrop Council Open Space IPG 2010\2010.10.13 SC Open Space Interim Planning Guidance.doc](#) The purpose of the IPG is to allow developers to predict as accurately as possible the likely contributions they will be asked to make through planning obligations, and therefore to anticipate the financial implications for development projects. Developer contributions would therefore be sought for new provision of recreational public open space, but where appropriate may be used ‘off site’ to help remedy local

deficiencies in the quantity or quality of existing provision. The developer funding contribution for open space, sport and recreation provision (PPG17 typologies), if not provided direct by the developer, are derived from BDC IPG calculations from 2007 and have been updated each year based on the annual Retail Price Index increase [..\POS Planning applications pre 2017\2017 S106 Tariff calculation for POS offsite contrubution.xls](#)

In 2012 Shropshire Council adopted a new Core Strategy for future developments and moved to the Community Infrastructure Levy (CIL) tariff contribution rather than a negotiated S106. CIL is a charge on new development to help fund supporting infrastructure across Shropshire. The rates within the schedule were informed by an economic viability assessment and consultation with both the general public and the development industry. Within Shropshire, CIL applies to all development that involves:

- The formation of one or more new dwellings, (including holiday lets), either through conversion or new build, regardless of size (unless it is 'affordable housing'); or
- The establishment of new residential floorspace (including extensions and replacements) of 100m² or above.

The CIL fund provides developers with more certainty as to the amount of contribution required based on a cost per meter. To reflect these changes the POS IPG was updated in 2012 and provided a quantity standard of 30m² per bed space, which combined and rounded PPG17 typologies in order to provide a single quantity standard, which was considered to be more practical to apply for all residential developments and more reflective of the multi-functional nature of many open spaces.

2015 SAMdev DPD plan set out proposals for the use of land and policies to guide future development to help deliver the vision and objectives of the Core Strategy. For the first time POS requirements were set out in policy and not just as guidance. Under Shropshire Council's SAMDev Plan and MD2 policy requirement, all residential developments will provide adequate open space, set at a minimum standard of 30m² per person (equivalent to 3ha per 1,000 population). For residential developments, the number of future occupiers will be based on a standard of one person per bedroom. The types of open space provided needs to be relevant to the development and its locality and should take guidance from the Place Plans. The ongoing needs for access to manage open space must be provided for and arrangements must be in place to ensure that the open space will be maintained in perpetuity whether by the occupiers, a private company, a community organisation, the local Town or Parish Council, or by Shropshire Council.

If the developer doesn't meet the policy of 30m² per bed space, then in certain circumstances (i.e. existing POS is within the accessible time standard) an offsite contribution can be negotiated and secured by entering into a S106 agreement. The funding calculator is based the average space of a dwelling (69m²) and the average occupancy (2.3) and how many times this goes into the POS that is not provided. The following link provides an example [V:\Outdoor Recreation\13 Planning\POS Planning applications pre 2017\2018 S106 Tariff calculation for POS offsite contrubution.xls](#)

In 2016-17 Shropshire Council commissioned Red Kite Network Ltd Consultants to undertake a review of the [counties open space and recreational needs](#). The primary purpose of the report was to provide an updated set of data by Place Plan area that would follow and provide continuity to the findings of previous open space study conducted in 2009. In doing so it has also provided an opportunity to assess how well the scope of 2009 methodology, and the standards informed by it were relevant in 2017.

The review concluded that there is a need to place a much greater emphasis on how open spaces form part of a larger functional network of green infrastructure. Existing standards only consider the

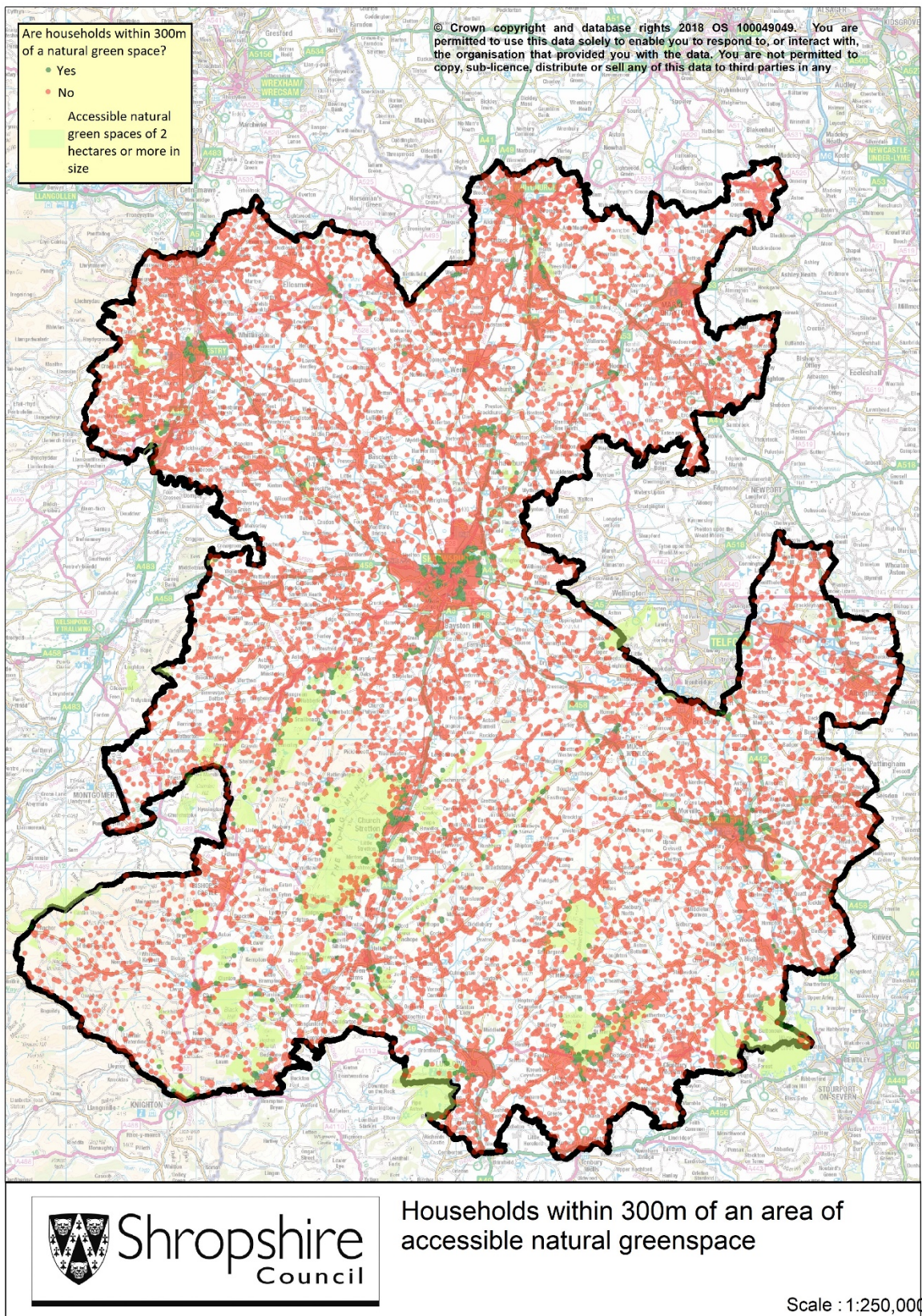
proportion of open space within a development and are not designed to assess how well the type and placement of open space fits into a wider green infrastructure network. At present the standards are only linked to residential developments, but in future a wider approach that includes equivalent standards for commercial/industrial developments is likely to be required. A well planned green infrastructure network addresses multiple issues, including physical and mental health, transport and air quality, climate change and biodiversity.

Assessing and planning the overall quality, accessibility, and connectivity of a wider network of open spaces requires a new analytical approach using a different set of criteria to that which informed the Shropshire Open Space Needs Assessment. To this end, the Council are currently conducting a spatial analysis of Accessible Green Spaces (AGS) in the county and developing a green infrastructure mapping database. The object of this work is to map every formalised accessible green space (including natural spaces, recreation and amenity sites, and parks) over 1.5 hectares in size, including all of the access points for each open space, and then to produce a detailed map showing which households are within the catchment area served by each greenspace, based on 300m walking distance. The output of this work is a map covering every household in the county, revealing in detail where there are gaps in open space provision.

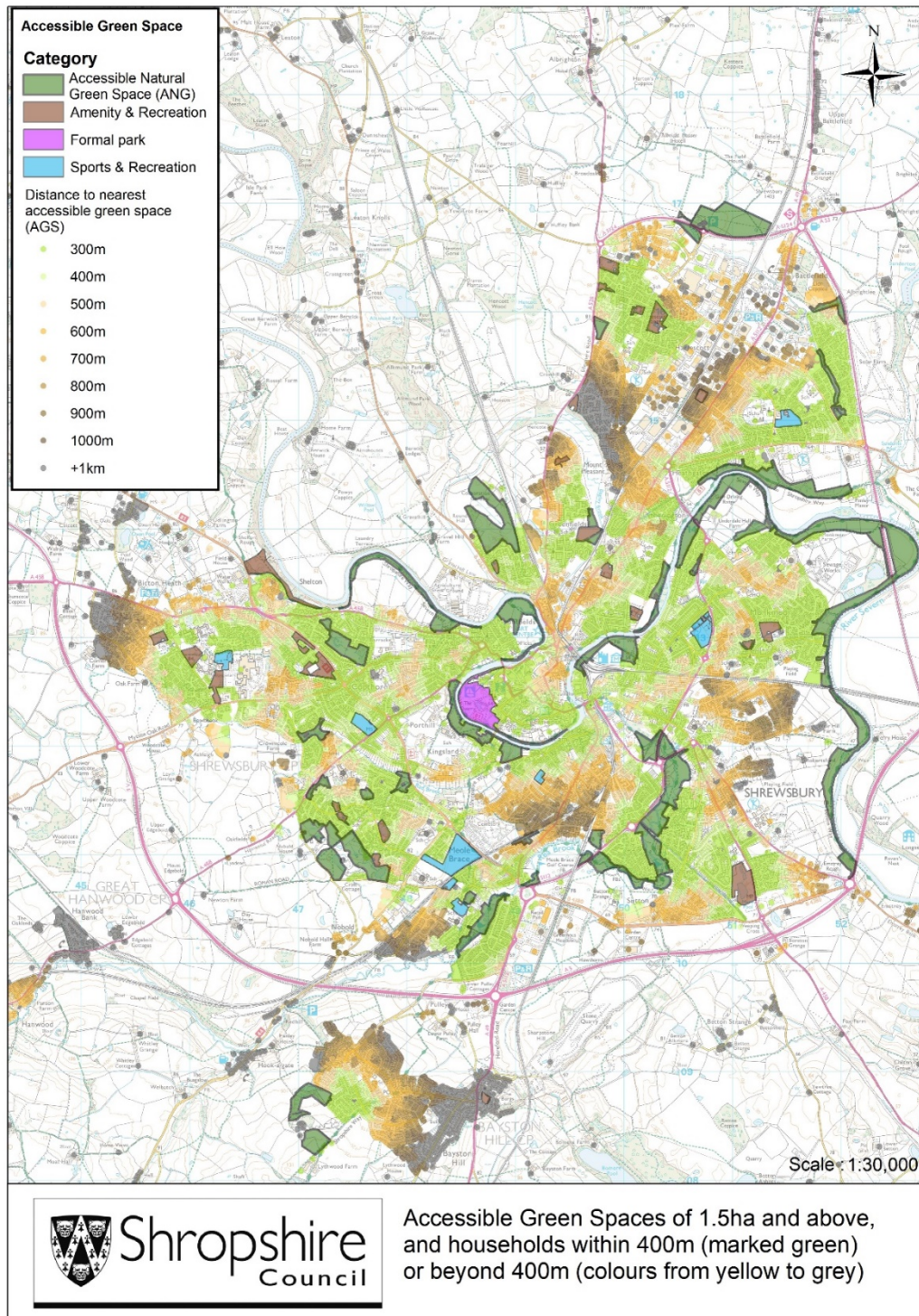
This approach is based on Natural England's Access to Natural Green Space (ANG) Standard, which provides guidance to local authorities to consider the provision of natural areas as part of a balanced policy to ensure that local communities have access to an appropriate mix of greenspaces providing for a range of recreational needs. It recommends that provision should be made of at least 2ha of accessible natural greenspace per 1000 population according to a system of tiers into which sites of different sizes fit:

- no person should live more than 300m from their nearest area of natural greenspace;
- there should be at least one accessible 20ha site within 2km of home;
- there should be one accessible 100ha site within 5km;
- there should be one accessible 500ha site within 10km.

The Council's green infrastructure mapping database has mapped every household and measured it against the natural green space accessibility standards above. The results of mapping both the Natural England ANG standards, and the broader categories of the AGS survey, show that although Shropshire is a rural county, there are still many places that do not meet the required standards.



The green infrastructure mapping database will enable the Council to master plan future developments, so that it can identify the amount of greenspace required and the best location that provides the best access for all new residents.



(The green infrastructure mapping system will be presented at the Nov 2018 Place Overview Committee).

It is anticipated that Central Government will be bring forward a set of national standards for open space, as described in their 25 Year Environment Plan, with the purpose of making sure that there are high quality, accessible, natural spaces close to where people live and work, particularly in urban areas, and encouraging more people to spend time in them to benefit their health and wellbeing.

These aspirations are included as priorities in the new Shropshire's Great Outdoors Strategy 2018-28

- to create new Supplementary Planning Guidance to enhance the quality, quantity and connectivity of greenspace in new developments
- to Increase the amount of accessible natural greenspace from 1.66ha/ 1,000 population to 2.0ha

Targets are also included within the Corporate Plan to:

- reduce the number of households with **very high** demand for accessible natural greenspace to 4% [from 5%]
- reduce the number of households with demand for accessible natural greenspace to 40% [from 42%]

Conclusion

The findings of the Red Kite report and the green infrastructure mapping system as a spatial analysis tool of open space provision, will inform and shape future green infrastructure master plans improving future standards, quality and accessibility of public accessible open space. This evidence base will feed into the Local Plan Review being conducted by the Council so that developers have clearer guidance as to what type, amount, quality and connectivity of open space is required within or around their proposed sites, to meet open space policy requirements.

These aspirations have been reflected in the Shropshire's Great Outdoors Strategy 2018-28, with priorities that include:

- Adopting a master planning approach through the revised Local Plan
- Conducting master planning of six market towns to plan countryside access and greenspace provision in response to new housing and employment land development
- Developing Supplementary Planning Guidance that encourages access, worthwhile greenspace and outdoor activities in new developments

This page is intentionally left blank

Proposed wording for letter re. Ironbridge Power station development

Outdoor leisure tourism is a major driver of the local economy in both Shropshire and Telford & Wrekin. Currently there is no east west route along the flat river plain between Ironbridge and Buildwas along the south of the river for local people and tourists to use on foot, on horseback or on a cycle.

Two National Cycleways meet at The Iron Bridge in the Severn Gorge, one follows the disused railway line along the south of the river that stops at the entry to the Ironbridge Power station at its eastern perimeter, this is National Route 45 of the NCN that links Chester with Salisbury via Whitchurch, Ironbridge, Bridgnorth, Droitwich Spa, Worcester, Gloucester, Cirencester and Swindon.

The other is National Route 55 of the National Cycle Network when complete will connect Ironbridge to Preston via Stafford, Macclesfield, Stockport and Wigan or Bolton. Between Stafford and Stoke-on-Trent the route follows National Route 5. It follows the Silkin Way into the area of the Gorge and links with Route 44 at The Woodbridge in Coalport and from there one can walk, cycle or ride to Ironbridge along a disused rail line and beyond to the perimeter of the power station site.

Interestingly the old railway line continued on to Shrewsbury, the other side of Buildwas bridge, opposite Buildwas Abbey. Not to continue this route through the Power Station site would be a missed opportunity should funding become available via a charity such as Sustrans or via funding from other sources to continue these long distance routes 'off road' to Shrewsbury.

This line would be marvellous bridleway for local riders and again it connects with the long distance Jack Mytton Way Bridleway in the Gorge.

The long distance walking routes that converge at the Ironbridge or that have direct walking routes to it include The Shropshire Way, Severn Way, The Telford T50 50 Mile Trail, The Silkin Way, South Telford Heritage Trail amongst others.

For all these reasons the logical main access point on foot, by cycle and on horseback is via the line of the disused railway line from the east. To make a non vehicle access and route through the site from where the old railway terminates at the boundary would not only be a wonderful opportunity for outdoor leisure tourism but it would enable the local communities on either side of the Gorge to interact socially and economically. This is especially important for those groups such as the young, poor or old without access to cars.

An additional path along the river and access point across the old 1930s bridge in the north west would create many circular and linked routes north and south and from the west and provide an alternative to using a fast section of road on the north bank of The Severn.

At the stakeholders initial meeting you invited representatives of The Ramblers and organisations representing other outdoor leisure interests. The two above propositions were suggested and seemed to be supported.

Therefore at the public consultation, it was very welcome to see a public right of way being proposed across the 1930s bridge and along the riverside and links to and through open space close to the river. There seemed to be a suggestion that the main non vehicle access point to the site could be this old bridge?

However, on the maps of the site put forward for consultation there was no non vehicle route shown accessing the site from the east and through the middle of the site, following the line of the disused railway towards Buildwas. Feedback from people we talked to who attended the public consultation noted that many of the participant suggested they would very much like a route for walkers, horse riders and cyclists along this line. They argued the main point of access should be from the east though the idea of a second access point from the old bridge was very welcome too, it was clear local people wanted and needed both. A shared bridleway/ cycleway/ footpath trail along the line of the old railway, perhaps alongside a highway through the site would also be an attractive prospect for tourists wanted to walk/ cycle/ ride between two major 'draws' in the Gorge, Buildwas Abbey and the Iron Bridge itself.

It would seem that representatives of walking, cycling and and horse rider groups have not been invited to subsequent stakeholders meetings although The Chair of Telford and East Shropshire Ramblers sent a follow up letter via email as suggested at the consultation, she has not had a response. This may be of course because their focus addressed other priorities and their needs will be looked at later.

We would therefore like to ask what are the current plans for non vehicle through routes through the site?

We would like to ask whether our respective organisations, could meet with the developers to discuss whether we could help plan for this group of users and how this site could maximise the opportunities available for an east/ west and north / south' green corridor' for non vehicle users through the site?

Between us we represent the views of both Local Authorities teams responsible for outdoor leisure and public access for walkers, horse riders and cyclists as well as representatives from a number of groups with a direct interest and a lot of practical experience of multi user shared paths. Our members are drawn not from not just groups representing walkers and riders but those with a much wider view, such as The Open Spaces Society, AONB, and many local Trusts. All of us were very impressed by the knowledge and understanding and practical examples of what you had achieved with developing trails and paths from other projects you have managed.

If we can help in any way we would be delighted to do so.

We look forward to your response.