

## LANDSCAPE GUIDANCE CONTRACT

**Responsible Officer** Phil Holden, AONB Partnership Manager  
e-mail: [phil.holden@shropshire.gov.uk](mailto:phil.holden@shropshire.gov.uk) Tel: 01743 254741

### Summary

Consultants are currently developing a guidance document for the AONB based on the Landscape Character Assessment. The purpose and value of this will be explained in this paper and through a brief presentation at the meeting.

### Recommendation

The Partnership is recommended to comment on the issues raised.

### Background

The Shropshire Landscape Character Assessment was developed in the early 2000s and published as a description of 27 'Landscape Types' across the county, of which 16 are found in the AONB. This is useful and still valid, but the further development of the assessment to analyse forces for change in the different landscape types and recommended guidance for conserving and enhancing their character and quality, has never been done. In some other AONBs and areas of the country this guidance stage has been developed, and has proved useful to inform both planning casework and land management. The proposal to develop guidance now for the AONB arose from improved contact and dialogue with Shropshire Council's Development Management team during 2018.

In December a contract for £10,000 to develop the guidance was let to Countryside working with Fiona Fyfe Associates, both of whom have a very good track record in this area of work. Map-based data and background material is now being analysed and the consultants carried out two days of fieldwork in January with members of the AONB team visiting all the landscape types and major areas of the AONB. A stakeholder workshop will be held on 14<sup>th</sup> March for interested partner organisations to hear about the project and discuss the early draft contents of the guidance. The input of partner organisations will be important in fine-tuning the guidance content. After this workshop it is expected to carry out a formal process of public consultation, in order that the guidance can carry as much weight as possible in the planning system.

The main outcome of the contract will be an electronic guidance document, but it is hoped also to extend the contract to enable the guidance material to be reached through web-based interactive mapping.

Some slides showing similar guidance materials from elsewhere will be shown at the meeting.

**List of Background Papers**

Shropshire Landscape Character Assessment is described at <https://www.shropshire.gov.uk/environment/landscape/shropshire-landscape-assessment/>, and the pdf of the Landscape Typology document and an interactive map are available.

Example of landscape guidance from Exmoor [http://www.exmoor-nationalpark.gov.uk/\\_data/assets/pdf\\_file/0008/996182/LCA-2018-LCT-D.pdf](http://www.exmoor-nationalpark.gov.uk/_data/assets/pdf_file/0008/996182/LCA-2018-LCT-D.pdf). The actual guidance content relating to planning and land management is in the last few pages of this document.

Example of interactive mapping for landscape guidance <http://www.malvernhillsaonb.org.uk/managing-the-aonb/guidance-documents/landscape-strategy-map/>

**Human Rights Act Appraisal**

The information in this report is compatible with the Human Rights Act 1998.

**Environmental Appraisal**

The recommendation in this paper will contribute to the conservation of protected landscapes.

**Risk Management Appraisal**

Risk management has been appraised as part of the considerations of this report.

**Community / Consultations Appraisal**

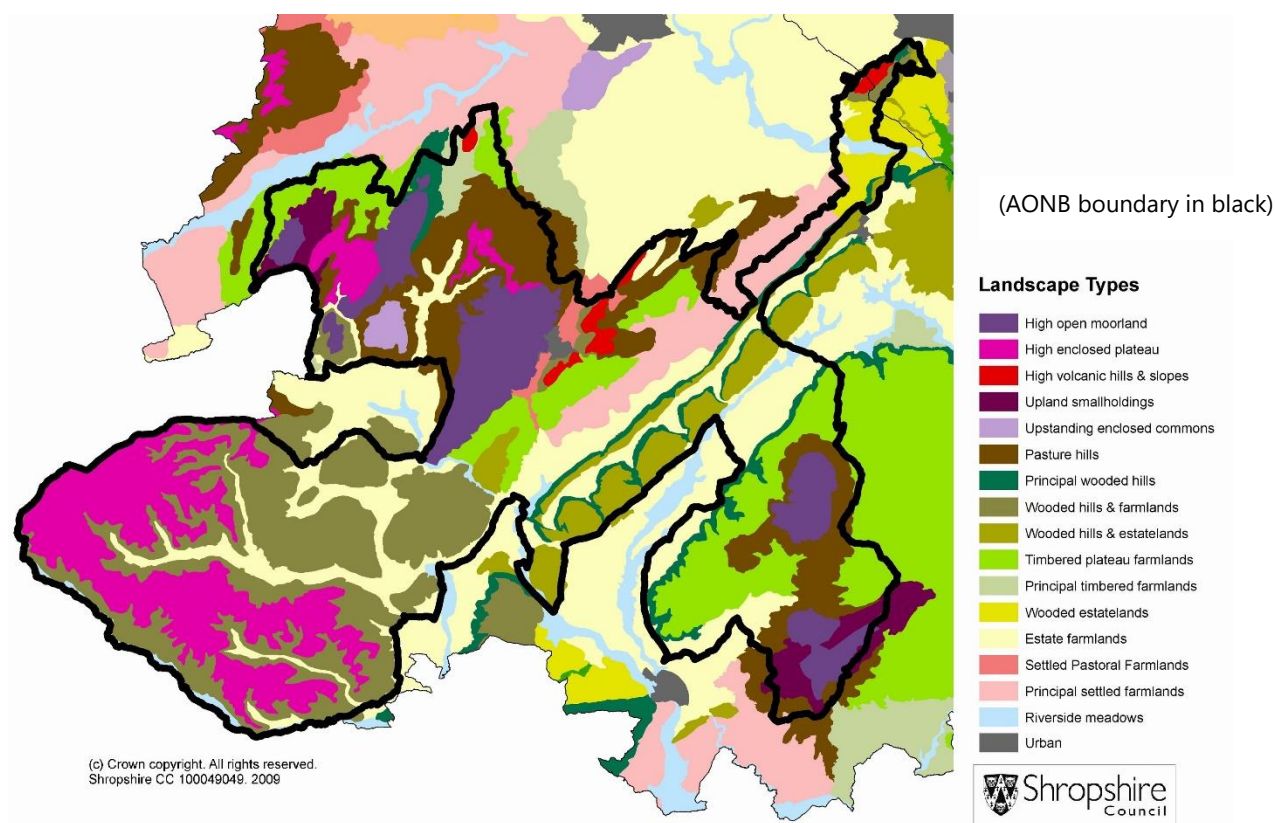
The topics raised in this paper have been the subject of earlier consultations with Partnership members.

**Appendices**

Appendix 1 Shropshire Hills AONB Landscape Types

## Shropshire Hills AONB Landscape Types

Of the 27 landscape types in the county, 16 are found in the AONB, as below.



Grouping	Landscape Types	Found in the AONB at
Upland landscape types	High Open Moorland High Enclosed Plateau Volcanic Hills and Slopes Upland Smallholdings Upstanding Enclosed Commons	Long Mynd, Stiperstones, Clee Hills Clun Forest, Shelve Stretton Hills, The Wrekin around Clee Hill and Stapeley Hill Norbury Hill
Intermediate landscape types	Pasture Hills Principal Wooded Hills Wooded Hills and Farmlands Wooded Hills and Estatelands Timbered Plateau Farmlands	Upper Onny, Clee Hills Wenlock Edge, fringe of Clee plateau, Eastridge Clun & Teme catchments SE dip slope of Wenlock Edge Clee plateau, fringes of Stretton & Rea valleys
Lowland landscape types	Principal Timbered Farmlands Wooded Estatelands Estate Farmlands Settled Pastoral Farmlands Principal Settled Farmlands Riverside Meadows Urban	Habberley area Leighton, Sheinton, Buildwas Corve Dale, Ape Dale Stretton Valley Ape Dale, Longnor Teme, Clun, Onny and Corve Church Stretton