

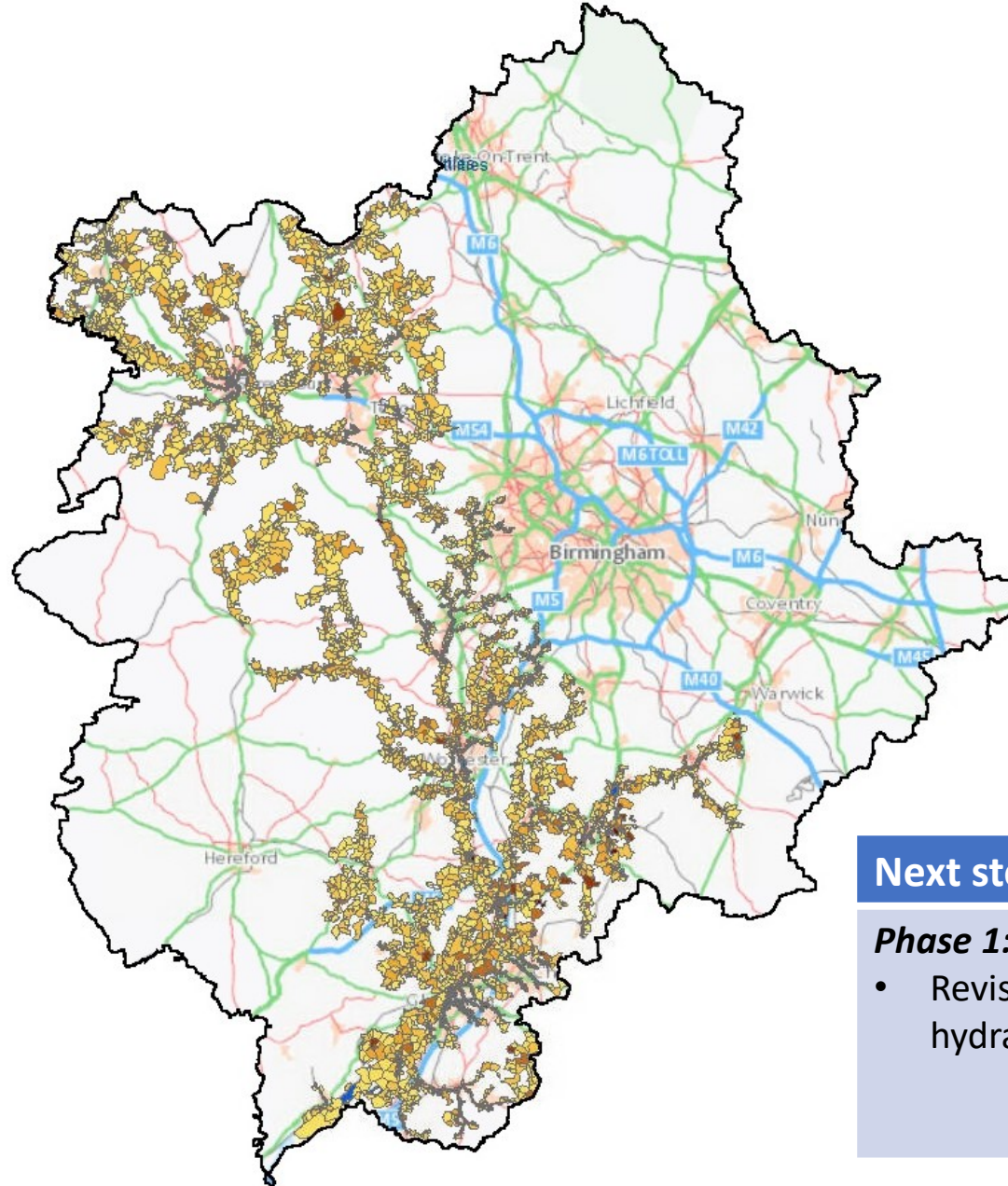
River
Severn
Partnership

River Sever Catchment Current Affected Areas

February 2020



River Severn catchment existing homes affected



Flood zone initial analysis

Number of postcodes with homes that intersect flood zones	Potential number of households affected
7,347	117,720

Next steps

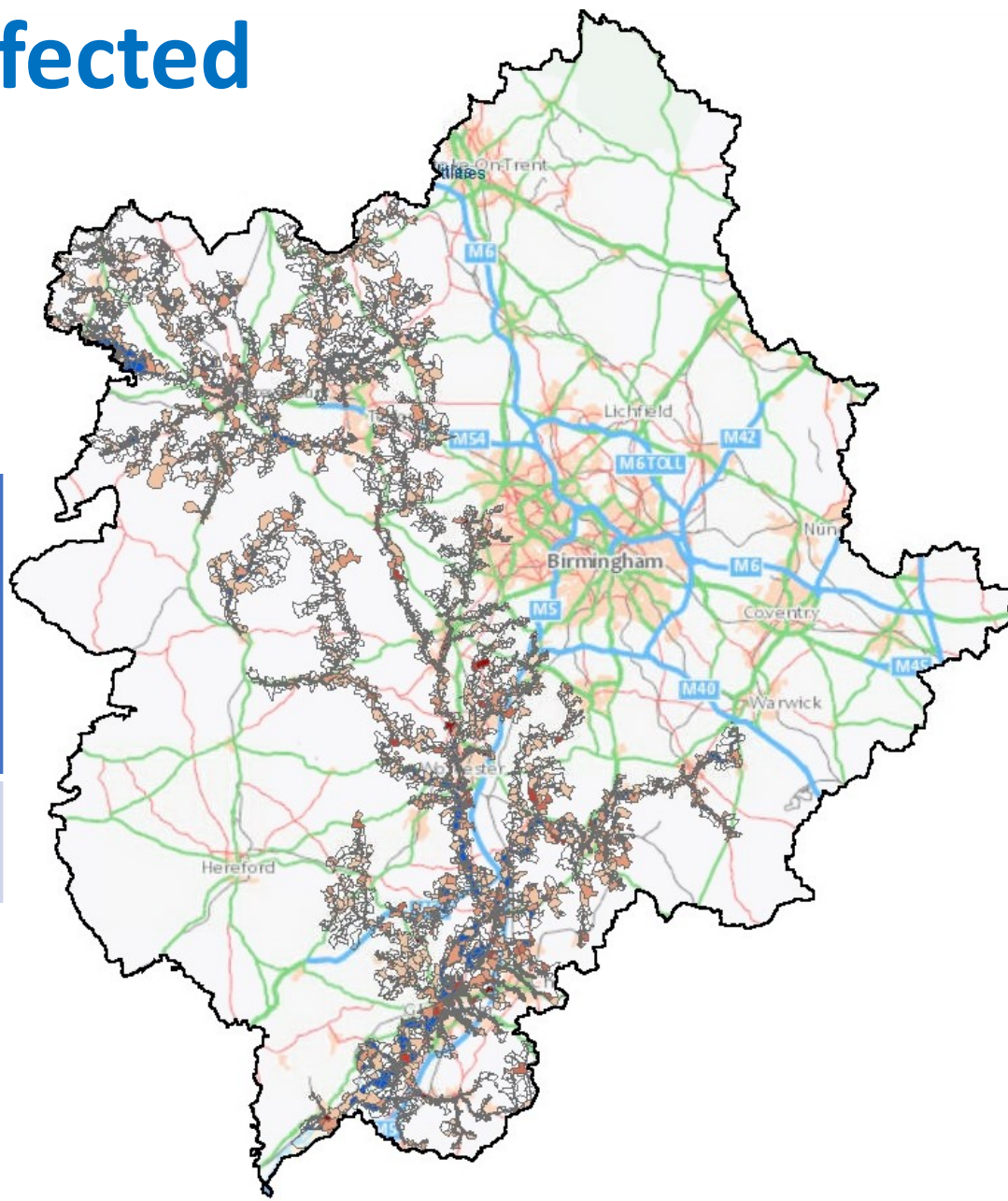
Phase 1:

- Revise affected properties against improved hydraulic model

River Severn catchment existing commercial properties affected

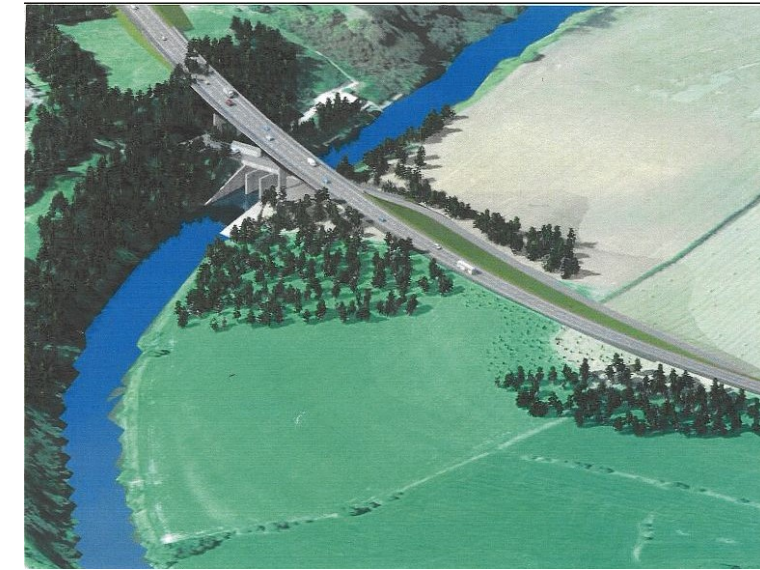
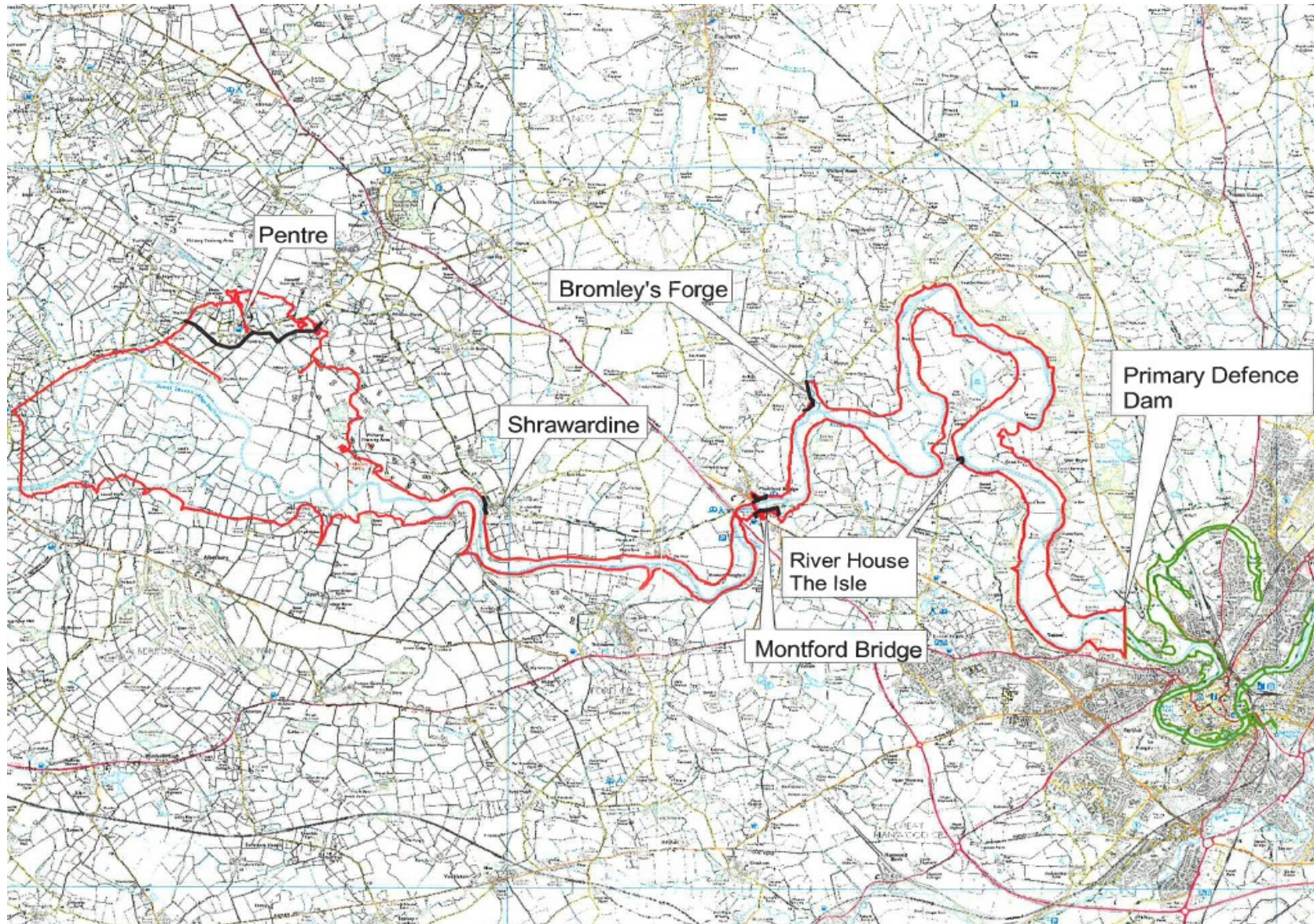
Flood zone initial analysis

Number of postcodes with commercial premises that intersect flood zones	Potential number of commercial properties affected
2,427	10,202



Number of existing businesses at highest risk (FZ3)	Number of jobs from existing businesses at highest risk (FZ3)
1,090	7,039
GVA value of existing businesses in FZ3	
>£355,500,000 p.a.	
Circa £1m per day	

North West of Shrewsbury Flood Zone Area



Indicative embankment on
NWRR at Shelton