

**CABINET 20 JULY 2022**  
**PUBLIC QUESTIONS**

<b>Question from:</b>	Brian Ellory	
<b>Subject:</b>	Traffic Calming Measures, Oteley Road	
<b>Portfolio Holder:</b>	Dean Carroll	Lezley to respond in Dean's absence

Why is it the case that after 3 – 4 years of complaints to Highways about the so called traffic calming measures at Oteley Road has no remedial action been taken and as the original spec was passed by independent consultants employed by the Council will these consultants be held responsible for all the rectification costs and if not why not?

Officers are currently engaged in progressing a number of Section 106 project schemes across the County of which Oteley Road is an important project on that list, but acknowledging also that development has been ongoing off Oteley Road as part of the Shrewsbury South Urban Extension (Shrewsbury South SUE) and where utility services have been installed along the road, as part of the new development coming forward to meet the new housing, retail and commercial needs. These utility interventions along Oteley Road are now coming to an end to allow a road scheme to proceed between Weeping Cross and Meole Brace roundabouts.

WSP have been commissioned this financial year to review options for the road and the draft has been completed; the next step once the options are confirmed will be public engagement of the project, where we will consult with residents/businesses and commuters on the potential designs. This is planned to happen this calendar year and will also look at the raised tables and crossing points that were fully developer funded.

Moving forward, the work to be carried out along Oteley Road will be funded via financial contributions secured from the developments, which was a requirement as part of the delivery of the Master Plan and subsequent planning consents.

<b>Question from:</b>	Mike Streeley	
<b>Subject:</b>	NWRR	
<b>Portfolio Holder:</b>	Dean Carroll	Ed to respond in Dean's absence

In the project timeline set out in the outline business case for the proposed North West Road in Shrewsbury (Figure 60, copied below), 295 days is allowed for a full public inquiry. Does Shropshire Council still anticipate a full public

inquiry to be held on the road? If a full inquiry is held, how long would it be expected to take and what budget has been allowed?

Figure 60 shows the preparation of the full business case progressing in parallel with the public inquiry. Would this still be the plan?

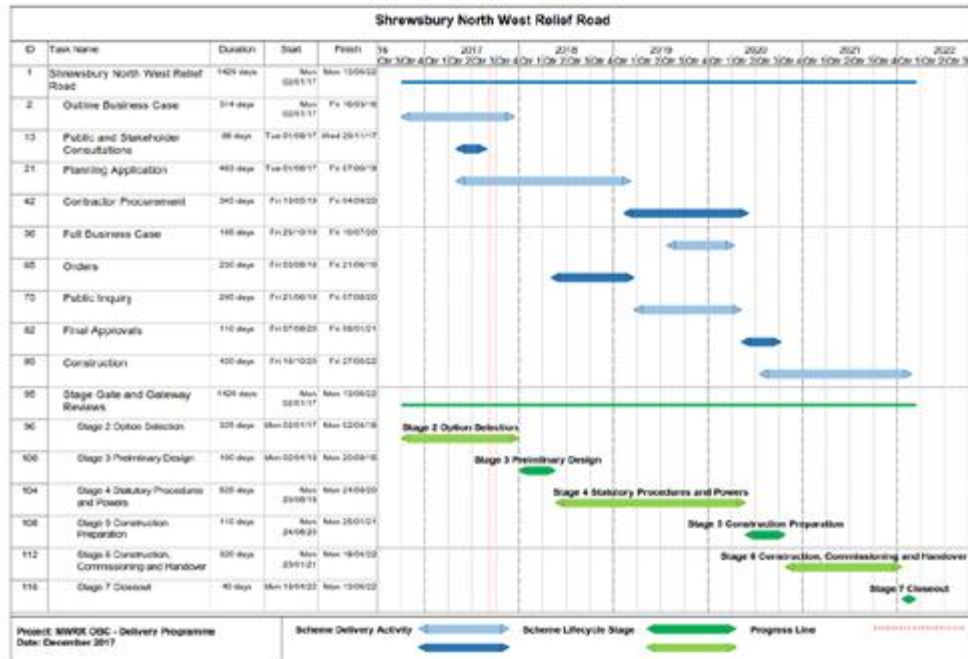


Figure 60 - Project Programme Summary

The council simply doesn't know whether there will be a challenge to any planning decisions, be it in favour or against the scheme, nor whether any challenge will be accepted for a public inquiry. It is however prudent to build in an assumption of public inquiry into delivery timescales so that the risk of an inquiry can be absorbed. Until the nature of any challenge is understood it is not possible to comment on the length or cost of an inquiry. It would still be intended to develop the full business case in parallel with an inquiry, in order to meet funding windows, however funding will obviously be conditional on a scheme gaining planning approval.