



the play inspection company

Annual Inspection

Shropshire Council

Tollgate Road Play Area

Tollgate Road, Ludlow, SY8 1TQ



API Associate



Unit 5, Glenmore Business Park, Blackhill Road, Poole, Dorset, BH16 6NL
t- 01202 590675 e- info@playinspections.co.uk

www.playinspections.co.uk

Inspection Scope for RPII Inspection Methodology

This document outlines the RPII scope for inspections undertaken by the Inspectors listed as Annual Inspectors on the RPII Register of Inspectors when undertaking Indoor Annual, Outdoor Annual, Outdoor Operational and Outdoor Routine inspections.

Inspections are undertaken with reference to the standards listed in this preamble only; where no date for the standard is given it will be the standard that is current at the time of inspection except where overlap periods are granted by the standards committee when standards are updated. The information contained in reports is provided to assist the owner/operator in fulfilling their responsibilities as detailed in the relevant standard. Other standards referenced within the listed standards do not form part of the inspection, unless they are also explicitly listed here.

The following standards are relevant to all installations of equipment that are publicly accessible to users; this includes public parks, pay and play parks, schools, nurseries, public houses, holiday parks, indoor play centres, farm parks etc. All equipment used or employed in publicly accessible areas should meet with the requirements of the relevant standards (listed below):

BS EN 1176 Parts 1, 2, 3, 4, 5, 6, 10 & 11 Playground equipment intended for permanent installation outdoors & indoors.

BS EN 1176 Part 7 - 'Guidance on Installation, Inspection, Maintenance and Operation' (this document gives guidance to the owners/operators of the facility on the installation, inspection, maintenance and operation of playground equipment, excluding ancillary items).

In the United Kingdom the National Foreword forms an important part to the understanding and implementation of the recommendations set out in this document. It clarifies the application of the document within the UK as best practice guidance, as the document has been used since its initial publication. Therefore, in the UK this standard (BS EN 1176 – Part 7) contains no requirements and needs to be read and implemented as guidance, with the use of the term 'shall' therefore becoming a recommendation, as in the term 'should'.

Domestic play equipment falls outside of the scope of BS EN 1176 and has its own standards (BS EN 71 series – Safety of Toys). Where domestic equipment can be identified this will be acknowledged in the report but any comments concerning compliance will follow the requirements and recommendations of BS EN 1176.

When water play items, including spray parks, are inspected any comments concerning compliance within the inspection will refer to BS EN 1176. We have not assessed these against the requirements of BS EN 17232 (Water play equipment and features).

Other equipment that is not clearly identified as unsupervised or domestic (natural play, self-build equipment etc.) will be assessed for compliance with the relevant standard listed below:

BS EN 15312 Free access multi-sports equipment
BS EN 14974 Skateparks
BS EN 16630 Permanently installed outdoor fitness equipment
BS EN 16899 Parkour equipment (plus RPII/API guidance notes)

Annual and Post Installation inspections will take into consideration compliance with these current standards, and defects related to wear and vandalism. Items not listed in the report have not been included in the inspection. The inspection will cover the playground equipment and the active area (that area which is obviously part of the playground), nominally up to three metres around, the fence line if closer, or other areas as agreed.

Operational inspections only take into consideration defects related to cleanliness, equipment ground clearances, ground surface finishes, exposed foundations, sharp edges, missing parts, excessive wear (of moving parts) structural integrity, wear and vandalism.

Routine visual inspections relate only to the most obvious defects such as broken or missing parts, litter, vandalism and issues created by severe weather conditions (the intention is to identify hazards created by storm damage).

All inspections are non-dismantling, non-destructive and do not include any structural, toxicology or impact assessments defined in the standard; however, the inspector will undertake a manual test for stability and if equipment fails under manual load, or any other hazard is identified as an unacceptable risk, the owner/operator will be notified as soon as practicably possible.

The inspector will access all reasonably accessible equipment and will assess all reasonably accessible parts above the standing surface. Where it is not possible to access parts of the equipment without employing an alternative means of access the report will record the action required by the owner/operator to ensure the continued safe use of the equipment.

Ancillary equipment will be assessed using the inspector's knowledge and experience of the standards named in this document. (Note: Ancillary items are not included in the specific equipment-type parts of the EN 1176 series; hence they are not assessed for compliance with EN 1176 series and are subject to a general safety assessment).

The owner/operator is responsible for the overall safety of the equipment and area.

The inspector will not undertake any of the following works unless specifically agreed in writing at the time of order:

Checking the depth and underlying structural integrity of any surface areas and/or carrying out any testing of the impact attenuating properties of any surfaces; the identification of any corrosion, rot or other deterioration in any apparatus or equipment other than by an external inspection; the inspection of any equipment (or part thereof) that is beneath the playing surface (loose-fill materials may be moved to expose foundations); tightening any bolts, hinges or other fixing devices on any apparatus or equipment; assessing or inspecting any electrical installations contained on any site and/or apparatus and/or equipment; assessing or inspecting any water supplies and/or water features and/or any associated computerised systems (including carrying out any programming); where planting or trees are mentioned in the report no assessments of toxicity, suitability or condition are undertaken – the owner/operator should have suitable inspections provided by a competent person.

The owner/operator should have a 'design risk assessment' provided by the manufacturer/designer of the area for the equipment and location in which the facility is installed.

The operator is responsible for managing risks of their provision and is required by law to carry out a 'suitable and sufficient assessment' of the risks associated with a site or activity. This inspection shall be considered as contributing to the operator's discharge of this responsibility.

The details contained within the report are a snapshot of the condition at the time of inspection only and subsequent events may affect the condition of the facility. Suggested remedial actions are based on the knowledge and experience of the inspector and/or that of the inspection company. The owner/operator should always seek the advice of the manufacturer or a competent person when undertaking repairs and/or modifications to equipment.

A full copy of the Play Inspection Company Ltd. Terms & Conditions is available on our website (www.playinspections.co.uk)

The operator is responsible for following the guidance of the relevant standards. The standards give guidance on the installation, inspection, maintenance and operation of the various types of facilities. The inspection guidance is listed in Table 1, with an indication of which parts will be included in an RPII Annual or Post-Installation Inspection. The relevant standards also contain additional parts which the operator should follow.

Inspection recommendations of relevant standards Refer to relevant standards for full text	Annual Main	RPII Annual/ Post Installation Inspection
6.1 d) Overall levels of safety of equipment (see note 1)	✓	✓ [1]
6.1 d) Overall levels of safety of foundations (see note 1)	✓	✓ [1]
6.1 d) Overall levels of safety of playing surfaces (see note 2)	✓	✓ [2]
6.1 d) Compliance with the relevant parts of the standard and or risk assessment (see note 3)	✓	✓ [3]
6.1 d) Effects of weather	✓	✓
6.1 d) Presence of rot, decay or corrosion (see note 1)	✓	✓ [1]
6.1 d) Assessment of repairs made or added or replaced components (see note 4)	✓	✓ [4]
6.1 d) Excavation or dismantling/additional measures	✓	✗
6.2.1 Assessment of glass reinforced plastics (see note 5)	✓	✓ [5]
6.2.1 Inspection of one post equipment (see note 1)	✓	✓ [1]
6.2.4 Undertaking the Operators inspection protocol	✓	✗

NB: The clause numbers in table 1 are taken from BS EN 1176 - Part 7:2020. The content is equally applicable to all other relevant standards listed herein. Playgrounds contain a range of equipment from different manufacturers and installed over a number of years; operators should implement any guidance provided by the manufacturer. Item specific detail is not readily available to RPII Playground Inspectors, whose report contributes to the operator's overall Annual Main Inspection as detailed in the relevant standards.

[1] A manual test only is undertaken for stability. Wear and instability are only detectable where readily apparent without dismantling or destruction and without the use of tools, excavation or specialist equipment. Rot and corrosion are tested or with a hammer and/or steel rod. Decay in timber may exist which can only be found with specialist equipment.

[2] Only the visible condition and dimensional compliance of surface extent is considered. Neither testing of impact attenuating properties nor measurement of the thickness of bound surfaces are undertaken on RPII annual inspections.

[3] The inspection assesses compliance where this can be tested on site using manual methods without dismantling, destruction and without the use of tools or specialist equipment.

[4] The operator should use manufacturer's recommended parts, or equivalent. We are unable to verify if such parts have been used, and any subsequent change in quality or performance.

[5] Visible glass fibres will be noted in reports. The operator is responsible for repairs or replacement.

Risk Assessment Matrix

			Scores in the report are multiplication factors of Likelihood x Severity					
			Severity>>					
Likelihood	Very High probability, if the situation is not addressed an accident is almost certain.	5	Very High	VL (5)	L (10)	M (15)	H (20)	VH (25)
	High probability an accident is probable without any added factor.	4	High	VL (4)	L (8)	M (12)	H (16)	H (20)
	Moderate probability an incident is foreseeable.	3	Moderate	VL (3)	L (6)	L (9)	M (12)	M (15)
	Some probability, requires a combination of factors to take place.	2	Low	VL (2)	VL (4)	L (6)	L (8)	L (10)
	No significant probability; lightning strike, freak accident.	1	Very Low	VL (1)	VL (2)	VL (3)	VL (4)	VL (5)
				Very Low	Low	Moderate	High	Very High
				1	2	3	4	5
				No injury likely e.g. damaged or soiled clothing, minor bruising, grazes	Minor injury, laceration or bruising requiring first aid only	Injury requiring medical intervention e.g. cuts requiring stitches	Serious injury including concussions or fracture of long bones	Severe injury involving a potential life changing injury or fatality
				Severity>>				
<p>Note 1: The total risk scores included within our reports are a multiplication factor of the calculated Likelihood and Severity of each finding. Both Likelihood and Severity are given a number between 1 - 5 as shown on the matrix above and these two numbers are then multiplied together to give the total risk score that is shown against defects on the report. Total risk scores can be divided in both directions, i.e. a total risk score of 12 could be a Likelihood (3) x Severity (4) or Likelihood (4) x Severity (3).</p> <p>Note 2: When we inspect we only see a snapshot of the current condition of the equipment. It is the operators responsibility to ensure that there is a continuing level of maintenance to keep the equipment in good working order and the site fit for use.</p>								

Equipment has been assessed to the following standards where relevant:

BS EN 1176 Parts 1-11 (Playground equipment and surfacing)
BS EN 14974 (Facilities for users of roller sports equipment)
BS EN 15312 (Free access multi-sports equipment)
BS EN 16899 (Parkour Equipment)
BS EN 16630 (Outdoor Fitness Equipment).



Tollgate Road Play Area

Inspection Ref: 2209989

Site Ref: 34395

Inspected: 31-October-2023 - 11:16 by Jamie Leeson (RPII Annual Inspector)

Risk Assessment: 15 Moderate Risk



Location:

The site is partially overlooked by properties in the local community

Disabled Access:

Some accessible features; an area that presents difficulties to the majority of people with disabilities but in favourable circumstances and certainly in partnership can be accessed.



i 10 - Low Risk

Item: Site General
Manufacturer: Owner/Operator
Surface Type: N/A
Item Quantity: 1
Equipment Compliance: N/A
Surface Area Compliance: N/A

Total Findings: 4



Finding 1

Maintenance work appears to be ongoing and there is unsecured temporary fencing in the play area - Remove or secure

Finding 2

There is some tree debris on the surfacing - Remove and maintain

Finding 3

There are holes in surface that may have been created purposely by users. - Infill to provide a sound reasonably level surface.

Finding 4

NOTE - The client was made aware of the more serious findings contained in this report at the time of the inspection, due to urgency of required action. - Ensure appropriate action is, or has already been taken.

! 12 - Moderate Risk

Item: Fence - Timber & Mesh Infill
Manufacturer: Not Identified
Surface Type: N/A
Item Part Number:
Item Quantity: 1
Equipment Compliance: N/A
Surface Area Compliance: N/A
Total Findings: 6



Finding 1

The fence has severe rot and is damaged exposing projecting fixings and there are unsecured sections of fencing within the play area - Remove all damaged and rotted fencing and secure safety fencing

Finding 3

A number of fixings have worked loose around the fencing - Secure all loose fixings

Finding 5

There is surface corrosion / rust present on the item - Consider treating the item

Finding 2

There is some strimmer / machinery damage apparent on the posts, this can penetrate the preservative applied to the timber and accelerate the rotting process - Monitor for any deterioration (rot) and replace as required

Finding 4

There are areas or parts of the timber on the structure that have rotted - Replace all affected timbers

Finding 6

The area / equipment on site has been isolated from use however the area is still accessible and the means of isolation has either introduced additional hazards that may cause harm in the event of users accessing the area or is insufficient to stop users from accessing the equipment - Provide a more suitable isolation method

9 - Low Risk

Item: Gate - Maintenance
Manufacturer: Not Identified
Surface Type: Grass
Item Quantity: 1
Equipment Compliance: N/A
Surface Area Compliance: N/A

Total Findings: 3



Finding 1

There is some damage to the item creating sharp edges - Repair and remove all sharp edges

Finding 2

The weld(s) on this item have failed - Repair item

Finding 3

The maintenance gate was correctly padlocked at the time of inspection, however this means that the inspector was unable to fully assess the gate - Ensure that there are 12mm gaps throughout the full range of motion on gate/s and between leaves where relevant

4 - Very Low Risk

Item: Sign
Manufacturer: Owner/Operator
Surface Type: N/A
Item Quantity: 1
Equipment Compliance: N/A
Surface Area Compliance: N/A

Total Findings: 1



Finding 1

This item is satisfactory - no work required -

i 6 - Low Risk

Item: Kissing Gate
Manufacturer: GL Jones
Surface Type: Bitmac
Item Quantity: 1
Equipment Compliance: N/A
Surface Area Compliance: N/A

Total Findings: 1



Finding 1

There is algae, silt or moss growth on the surface resulting in slippery conditions - Clean and treat appropriately

i 6 - Low Risk

Item: Litter Bin
Manufacturer: Broxap
Surface Type: Concrete
Item Quantity: 1
Equipment Compliance: N/A
Surface Area Compliance: N/A

Total Findings: 1



Finding 1

The paintwork on this item has been damaged or worn exposing the metal underneath which is rusting / corroding - Treat affected areas and repaint

8 - Low Risk

Item: Bench
Manufacturer: Not Identified
Surface Type: Grass
Item Quantity: 2
Equipment Compliance: N/A
Surface Area Compliance: N/A

Total Findings: 1



Finding 1

The area around the item has eroded and may become slippery - Reinststate eroded area

9 - Low Risk

Item: Fence - Chainlink
Manufacturer: Not Identified
Surface Type: N/A
Item Quantity: 1
Equipment Compliance: N/A
Surface Area Compliance: N/A

Total Findings: 3



Finding 1

The adjacent foliage is overhanging - Cut back and maintain

Finding 3

There are projecting bolt thread(s) present - Remove excess thread length and deburr or provide cap

Finding 2

The fence is severely damaged in places - Repair or replace all affected sections

4 - Very Low Risk

Item: Fence - Steel Mesh
Manufacturer: Owner/Operator
Surface Type: Grass
Item Quantity: 1
Equipment Compliance: N/A
Surface Area Compliance: N/A

Total Findings: 1



Finding 1

This item is satisfactory - no work required -

6 - Low Risk

Item: Football Goal
Manufacturer: Not Identified
Surface Type: Grass
Item Quantity: 2
Equipment Compliance: N/A
Surface Area Compliance: N/A

Total Findings: 4



Finding 1

NB: We have undertaken a maintenance inspection only of the football goal(s); full load testing falls outside the scope of our inspection. - Implement load testing as required

Finding 3

The paintwork on this item has been damaged or worn exposing the metal underneath which is rusting / corroding - Treat affected areas and repaint

Finding 2

The surface has eroded in some areas and may be slippery in wet conditions - Reinstate the surface

Finding 4

There is/are inserts missing - Replace missing inserts

12 - Moderate Risk

Item: 1 Bay 2 Seat (Flat)
Manufacturer: S M P (Playgrounds Ltd)
Surface Type: Wet Pour
Item Quantity: 1
Equipment Compliance: No
Surface Area Compliance: Yes

Total Findings: 14



Finding 1

There are significant gaps (over 30mm) between the surface and the edging or between the joints in the surface; these are large enough for a small foot to enter - Repair surfacing

Finding 3

There is weed / vegetation growth on, between, or around the edges of the surfacing - Remove weed / vegetation growth

Finding 5

There are trip hazards at the edges of the surface - Reinstate surrounding surface levels to remove the trip points

Finding 7

There is offensive graffiti present - Remove as soon as practicable

Finding 9

There is some minor damage to the surface - Monitor for any further deterioration and repair as required

Finding 11

The chain openings are in excess of 8.6mm and do not meet the recommendations of BS EN 1176 Part 1 - Monitor - No remedial work recommended

Finding 13

The shackles are worn in excess of 40% and require renewing - Replace worn shackles

Finding 2

The surface has subsided in some areas - Monitor for any further deterioration and repair as required

Finding 4

The surface is lifting at the edges and creating trip points - Repair perimeter of surfacing to remove trip points

Finding 6

The paintwork on this item has been damaged or worn exposing the metal underneath which is rusting / corroding - Treat affected areas and repaint

Finding 8

The seat has minor damage or wear - Monitor for any further deterioration and replace as required

Finding 10

The connecting links are in excess of 8.6mm and less than 12mm and fail the requirements of BS EN 1176 Part 1; clause 4.2.13, Chains - Monitor use and replace with compliant links at the next maintenance cycle

Finding 12

The chain links are worn in excess of 60% and require renewing - Replace worn chains

Finding 14

The bushes are worn or missing - Replace worn or missing bushes

! 15 - Moderate Risk

Item: Single Point Swing - Type 3
Manufacturer: Not Identified
Surface Type: Grass Matrix Tiles
Item Quantity: 1
Equipment Compliance: No
Surface Area Compliance: Yes

Total Findings: 11



Finding 1

There is/are bolt cap covers missing or damaged on the item - Replace missing or damaged bolt cap covers

Finding 2

There is some strimmer / machinery damage apparent on the posts, this can penetrate the preservative applied to the timber and accelerate the rotting process - Monitor for any deterioration (rot) and replace as required

Finding 3

There is some evidence of rot in the timber posts - Monitor for any further deterioration and replace as required

Finding 4

Due to the dimensions of the timber it was not possible to ascertain the condition of the timber at its core without further testing. We recommend a Resi-PD survey to establish the condition of the timber at its core. - Contact the Play Inspection Company office for further information

Finding 5

There is damage apparent on the beam, this can penetrate the preservative applied to the timber and accelerate the rotting process - Replace the damaged beam

Finding 6

The grass mats are silted up and the soil is compacted; this may have an effect on the impact absorbing properties of the surface - Consider HIC testing impact absorbing properties to ensure the correct surface qualities are maintained for the equipment and replace as required

Finding 7

The surfacing is severely damaged - Replace damaged areas of surfacing

Finding 8

There are gaps opening between the grass mat tiles - Provide additional ties or secure / reinstate surface which are also lifting

Finding 9

The seat clearance from finished surface level to the underside of the seat is too low and does not meet the requirements of BS EN 1176 Part 2 (400mm minimum clearance required from rigid part of seat in most onerous position) - Adjust seat clearance

Finding 10

There is some notable evidence of chain wear - Monitor for any further deterioration and replace when 40% worn

Finding 11

There is some wear to the suspension joint - Refer to manufacturer specification and service or replace as required

i 8 - Low Risk

Item: Log Walk
Manufacturer: Not Identified
Surface Type: Grass
Item Quantity: 2
Equipment Compliance: Yes
Surface Area Compliance: Yes



Total Findings: 3

Finding 1

There are areas or parts of the timber posts that have rotted or are missing - Replace all affected timbers

Finding 2

There is some strimmer / machinery damage apparent on the posts, this can penetrate the preservative applied to the timber and accelerate the rotting process - Monitor for any deterioration (rot) and replace as required

Finding 3

Parts of the timber are rough or splintered - Remove all rough or sharp edges

i 8 - Low Risk

Item: Bridge
Manufacturer: Not Identified
Surface Type: Grass
Item Quantity: 2
Equipment Compliance: N/A
Surface Area Compliance: N/A



Total Findings: 3

Finding 1

There is algae or moss on the surface of the equipment - Clean and treat appropriately

Finding 2

The timber has a number of splits/shakes or air cracks and this may affect the stability or allow water ingress which will accelerate the rotting process - Monitor to ensure the splits do not cross through fixing points of the structure and/or cause any instability

Finding 3

There are areas or parts of the timber on the structure that have rotted - Replace all affected timbers

i 6 - Low Risk

Item: Spring Aeroplane
Manufacturer: Fahr Industries
Surface Type: Sand
Item Quantity: 1
Equipment Compliance: Yes
Surface Area Compliance: Yes

Total Findings: 1



Finding 1

The paintwork on the spring has been damaged or worn exposing the metal underneath which is rusting - Treat any rusting components and repaint

i 6 - Low Risk

Item: 1 Bay 2 Seat (Cradle)
Manufacturer: S M P (Playgrounds Ltd)
Surface Type: Sand
Item Quantity: 1
Equipment Compliance: Yes
Surface Area Compliance: Yes

Total Findings: 3



Finding 1

There is some notable evidence of chain wear - Monitor for any further deterioration and replace when 40% worn

Finding 3

The bushes are showing signs of wear - Monitor for any further deterioration and replace as required

Finding 2

There is some wear to the shackles - Monitor for any further deterioration and replace when 40% worn

i 8 - Low Risk

Item: Leap Frog
Manufacturer: Not Identified
Surface Type: Grass
Item Quantity: 1
Equipment Compliance: Yes
Surface Area Compliance: Yes

Total Findings: 7



Finding 1

There is/are bolt cap covers missing or damaged on the item - Replace missing or damaged bolt cap covers

Finding 3

The timber has a number of splits/shakes or air cracks and this may affect the stability or allow water ingress which will accelerate the rotting process - Monitor to ensure the splits do not cross through fixing points of the structure and/or cause any instability

Finding 5

A number of fixing(s) have worked loose - Secure all loose fixings

Finding 7

The item is slightly loose in its foundations - Monitor for any further deterioration and repair as required

Finding 2

Parts of the timber are rough or splintered - Remove all rough or sharp edges

Finding 4

There is some evidence of rot in the timber posts - Monitor for any further deterioration and replace as required

Finding 6

There is algae or moss on the surface of the equipment - Clean and treat appropriately

i 10 - Low Risk

Item: Climbing Frame
Manufacturer: Lappset UK Ltd
Surface Type: Grass Matrix Tiles
Item Quantity: 1
Equipment Compliance: Yes
Surface Area Compliance: Yes

Total Findings: 4



Finding 1

This item of equipment has a fall height in excess of 2.5m and grass mats have been installed as an impact absorbing surface; these mats rely heavily on the underlying surface to achieve their critical fall height properties. - Ensure surfacing certification is sought and consider HIC testing to ensure the surfacing is performing adequately

Finding 3

There is some damage to the item - Monitor for any further deterioration and repair as required

Finding 2

There is/are inserts missing - Replace missing inserts

Finding 4

There is some damage to the pole - Monitor for any further deterioration and repair as required

! 12 - Moderate Risk

Item: Carousel
Manufacturer: Lappset UK Ltd
Surface Type: Grass Matrix Tiles
Item Quantity: 1
Equipment Compliance: Yes
Surface Area Compliance: Yes

Total Findings: 5



Finding 1

The grass mats are silted up and the soil is compacted; this may have an effect on the impact absorbing properties of the surface - Consider HIC testing impact absorbing properties to ensure the correct surface qualities are maintained for the equipment and replace as required

Finding 3

There is/are bolt cap covers missing or damaged on the item - Replace missing or damaged bolt cap covers

Finding 5

Parts of the timber are rough or splintered - Remove all rough or sharp edges

Finding 2

The seat is severely damaged and requires replacing - Replace damaged seat

Finding 4

There is offensive graffiti present - Remove as soon as practicable

! 15 - Moderate Risk

Item: Cable Runway
Manufacturer: Lappset UK Ltd
Surface Type: Grass Matrix Tiles
Item Quantity: 1
Equipment Compliance: No
Surface Area Compliance: Yes

Total Findings: 12



Finding 1

We have completed a visual inspection of the suspension links, cable and fixing points from ground level, however it is not possible to fully inspect these areas without either hiring equipment to gain access or removing the cable and suspension and inspecting at ground level. We recommend that the main cable and fixing security is thoroughly inspected at least in accordance with the manufacturers recommendations to check for wear, damage, security or internal rusting; this will help to ensure the continued safe use of the equipment - Inspect in accordance with the manufacturers recommendations

Finding 3

There is some strimmer / machinery damage apparent on the posts, this can penetrate the preservative applied to the timber and accelerate the rotting process - Monitor for any deterioration (rot) and replace as required

Finding 5

The surfacing is severely damaged - Replace damaged areas of surfacing

Finding 7

The dampening spring or tyre is damaged or broken on the item - Replace spring or tyre

Finding 9

The nylon inserts are worn or missing at the point the cable enters the traveller - Replace worn or missing inserts as required

Finding 2

The tree canopy overhangs the equipment and is less than 2.0m away and the cable is not obstruction free - Lift tree canopy to ensure a minimum clearance of 2.0m from the equipment

Finding 4

The grass mats are silted up and the soil is compacted; this may have an effect on the impact absorbing properties of the surface - Consider HIC testing impact absorbing properties to ensure the correct surface qualities are maintained for the equipment and replace as required

Finding 6

The grass has eroded within the impact area of the equipment and may not provide the necessary impact attenuating properties for the equipment fall height; the surface may also be slippery in wet weather - Reinstatate the grass or provide an all weather surface

Finding 8

The fixings are corroding - Monitor for any further deterioration and replace as required

Finding 10

The seat connection cannot be inspected without dismantling the seat - Dismantle the seat to inspect the seat connection for wear

Finding 11

The seat is less than 2.0 metres from the post when extended at 45 degrees at the end of the area of travel and does not meet the requirements of BS EN 1176 Part 4 - Adjust the cable stop position to ensure the minimum distance is maintained

Finding 12

Fixing Pins have been installed in the impact areas of the grass mats - Remove pins from impact areas

8 - Low Risk

Item: Embankment Slide
Manufacturer: Lappset UK Ltd
Surface Type: Grass Matrix Tiles
Item Quantity: 1
Equipment Compliance: Yes
Surface Area Compliance: Yes

Total Findings: 8



Finding 1

The grass mats are silted up and the soil is compacted; this may have an effect on the impact absorbing properties of the surface - Consider HIC testing impact absorbing properties to ensure the correct surface qualities are maintained for the equipment and replace as required

Finding 2

There is some tree debris on the surfacing - Remove and maintain

Finding 3

Fixing Pins have been installed in the impact areas of the grass mats - Remove pins from impact areas

Finding 4

There is moderate damage to the surface - Replace the damaged areas of surfacing

Finding 5

There are a number of dents in the slide surface - Monitor for any further deterioration and repair as required

Finding 6

The side of the slide is damaged - Monitor for any further deterioration and repair as required

Finding 7

There is algae or moss on the surface of the equipment - Clean and treat appropriately

Finding 8

There is/are bolt cap covers missing or damaged on the item - Replace missing or damaged bolt cap covers

i 10 - Low Risk

Item: Boulders
Manufacturer: Natural Feature
Surface Type: Grass
Item Quantity: 1
Equipment Compliance: N/A
Surface Area Compliance: N/A

Total Findings: 1



Finding 1

The rocks and/or boulders have moss/algae growth apparent - Clean and maintain

! 12 - Moderate Risk

Item: Posts
Manufacturer: Owner/Operator
Surface Type: Grass
Item Quantity: 1
Equipment Compliance: N/A
Surface Area Compliance: N/A

Total Findings: 5



Finding 1

There are areas or parts of the timber on the structure that have rotted - Replace all affected timbers

Finding 2

There is some strimmer / machinery damage apparent on the posts, this can penetrate the preservative applied to the timber and accelerate the rotting process - Monitor for any deterioration (rot) and replace as required

Finding 3

The timber has a number of splits/shakes or air cracks and this may affect the stability or allow water ingress which will accelerate the rotting process - Monitor to ensure the splits do not cross through fixing points of the structure and/or cause any instability

Finding 4

Parts of the timber are rough or splintered - Remove all rough or sharp edges

Finding 5

There are areas or parts of the timber post that have rotted and failed under testing - Replace all affected timbers and remove damaged timber from site

Findings information

i 10 - Low Risk (Finding 1)

Item: Ancillary Items - Site General
Manufacturer: Owner/Operator

Risk Level: L - Low Risk
Surface: N/A



Finding: Maintenance work appears to be ongoing and there is unsecured temporary fencing in the play area

Action: Remove or secure

i 6 - Low Risk (Finding 2)

Item: Ancillary Items - Site General
Manufacturer: Owner/Operator

Risk Level: L - Low Risk
Surface: N/A



Finding: There is some tree debris on the surfacing

Action: Remove and maintain

i 8 - Low Risk (Finding 3)

Item: Ancillary Items - Site General
Manufacturer: Owner/Operator

Risk Level: L - Low Risk
Surface: N/A



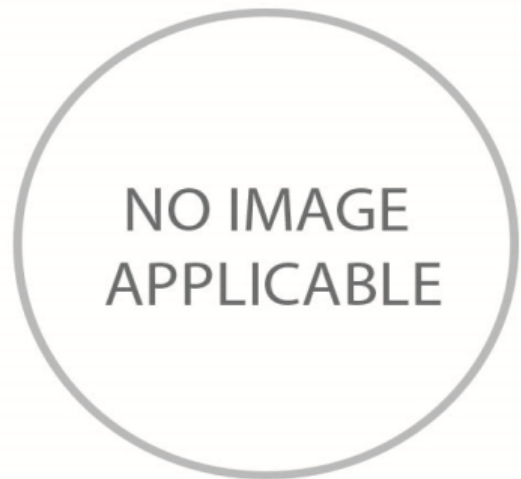
Finding: There are holes in surface that may have been created purposely by users.

Action: Infill to provide a sound reasonably level surface.

i 0 - Risk Assessment not Undertaken (Finding 4)

Item: Ancillary Items - Site General
Manufacturer: Owner/Operator

Risk Level: N - Risk Assessment not Undertaken
Surface: N/A



Finding: NOTE - The client was made aware of the more serious findings contained in this report at the time of the inspection, due to urgency of required action.

Action: Ensure appropriate action is, or has already been taken.

⚠️ 12 - Moderate Risk (Finding 1)

Item: Fences - Fence - Timber & Mesh Infill
Manufacturer: Not Identified

Risk Level: M - Moderate Risk
Surface: N/A



Finding: The fence has severe rot and is damaged exposing projecting fixings and there are unsecured sections of fencing within the play area

Action: Remove all damaged and rotted fencing and secure safety fencing

i 6 - Low Risk (Finding 2)

Item: Fences - Fence - Timber & Mesh Infill
Manufacturer: Not Identified

Risk Level: L - Low Risk
Surface: N/A



Finding: There is some strimmer / machinery damage apparent on the posts, this can penetrate the preservative applied to the timber and accelerate the rotting process

Action: Monitor for any deterioration (rot) and replace as required

i 9 - Low Risk (Finding 3)

Item: Fences - Fence - Timber & Mesh Infill
Manufacturer: Not Identified

Risk Level: L - Low Risk
Surface: N/A



Finding: A number of fixings have worked loose around the fencing
Action: Secure all loose fixings

i 8 - Low Risk (Finding 4)

Item: Fences - Fence - Timber & Mesh Infill
Manufacturer: Not Identified

Risk Level: L - Low Risk
Surface: N/A



Finding: There are areas or parts of the timber on the structure that have rotted

Action: Replace all affected timbers

i 6 - Low Risk (Finding 5)

Item: Fences - Fence - Timber & Mesh Infill
Manufacturer: Not Identified

Risk Level: L - Low Risk
Surface: N/A



Finding: There is surface corrosion / rust present on the item

Action: Consider treating the item

12 - Moderate Risk (Finding 6)

Item: Fences - Fence - Timber & Mesh Infill
Manufacturer: Not Identified

Risk Level: M - Moderate Risk
Surface: N/A



Finding: The area / equipment on site has been isolated from use however the area is still accessible and the means of isolation has either introduced additional hazards that may cause harm in the event of users accessing the area or is insufficient to stop users from accessing the equipment

Action: Provide a more suitable isolation method

9 - Low Risk (Finding 1)

Item: Gates - Gate - Maintenance
Manufacturer: Not Identified

Risk Level: L - Low Risk
Surface: Grass



Finding: There is some damage to the item creating sharp edges

Action: Repair and remove all sharp edges

i 9 - Low Risk (Finding 2)

Item: Gates - Gate - Maintenance
Manufacturer: Not Identified

Risk Level: L - Low Risk
Surface: Grass



Finding: The weld(s) on this item have failed

Action: Repair item

i 0 - Risk Assessment not Undertaken (Finding 3)

Item: Gates - Gate - Maintenance
Manufacturer: Not Identified

Risk Level: N - Risk Assessment not Undertaken
Surface: Grass



Finding: The maintenance gate was correctly padlocked at the time of inspection, however this means that the inspector was unable to fully assess the gate

Action: Ensure that there are 12mm gaps throughout the full range of motion on gate/s and between leaves where relevant

i 6 - Low Risk (Finding 1)

Item: Gates - Kissing Gate
Manufacturer: GL Jones

Risk Level: L - Low Risk
Surface: Bitmac



Finding: There is algae, silt or moss growth on the surface resulting in slippery conditions

Action: Clean and treat appropriately

i 6 - Low Risk (Finding 1)

Item: Ancillary Items - Litter Bin
Manufacturer: Broxap

Risk Level: L - Low Risk
Surface: Concrete



Finding: The paintwork on this item has been damaged or worn exposing the metal underneath which is rusting / corroding

Action: Treat affected areas and repaint

i 8 - Low Risk (Finding 1)

Item: Ancillary Items - Bench
Manufacturer: Not Identified

Risk Level: L - Low Risk
Surface: Grass



Finding: The area around the item has eroded and may become slippery

Action: Reinststate eroded area

i 6 - Low Risk (Finding 1)

Item: Fences - Fence - Chainlink
Manufacturer: Not Identified

Risk Level: L - Low Risk
Surface: N/A



Finding: The adjacent foliage is overhanging

Action: Cut back and maintain

i 9 - Low Risk (Finding 2)

Item: Fences - Fence - Chainlink
Manufacturer: Not Identified

Risk Level: L - Low Risk
Surface: N/A



Finding: The fence is severely damaged in places

Action: Repair or replace all affected sections

i 8 - Low Risk (Finding 3)

Item: Fences - Fence - Chainlink
Manufacturer: Not Identified

Risk Level: L - Low Risk
Surface: N/A



Finding: There are projecting bolt thread(s) present

Action: Remove excess thread length and deburr or provide cap

i 0 - Risk Assessment not Undertaken (Finding 1)

Item: Multi Use Games Area - Football Goal
Manufacturer: Not Identified

Risk Level: N - Risk Assessment not Undertaken
Surface: Grass



Finding: NB: We have undertaken a maintenance inspection only of the football goal(s); full load testing falls outside the scope of our inspection.

Action: Implement load testing as required

i 6 - Low Risk (Finding 2)

Item: Multi Use Games Area - Football Goal
Manufacturer: Not Identified

Risk Level: L - Low Risk
Surface: Grass



Finding: The surface has eroded in some areas and may be slippery in wet conditions
Action: Reinstate the surface

i 6 - Low Risk (Finding 3)

Item: Multi Use Games Area - Football Goal
Manufacturer: Not Identified

Risk Level: L - Low Risk
Surface: Grass



Finding: The paintwork on this item has been damaged or worn exposing the metal underneath which is rusting / corroding
Action: Treat affected areas and repaint



i 4 - Very Low Risk (Finding 4)

Item: Multi Use Games Area - Football Goal
Manufacturer: Not Identified

Risk Level: V - Very Low Risk
Surface: Grass



Finding: There is/are inserts missing

Action: Replace missing inserts

i 9 - Low Risk (Finding 1)

Item: Swings - 1 Bay 2 Seat (Flat)
Manufacturer: S M P (Playgrounds Ltd)

Risk Level: L - Low Risk
Surface: Wet Pour



Finding: There are significant gaps (over 30mm) between the surface and the edging or between the joints in the surface; these are large enough for a small foot to enter

Action: Repair surfacing

i 8 - Low Risk (Finding 2)

Item: Swings - 1 Bay 2 Seat (Flat)
Manufacturer: S M P (Playgrounds Ltd)

Risk Level: L - Low Risk
Surface: Wet Pour



Finding: The surface has subsided in some areas

Action: Monitor for any further deterioration and repair as required

i 6 - Low Risk (Finding 3)

Item: Swings - 1 Bay 2 Seat (Flat)
Manufacturer: S M P (Playgrounds Ltd)

Risk Level: L - Low Risk
Surface: Wet Pour



Finding: There is weed / vegetation growth on, between, or around the edges of the surfacing

Action: Remove weed / vegetation growth

i 8 - Low Risk (Finding 4)

Item: Swings - 1 Bay 2 Seat (Flat)
Manufacturer: S M P (Playgrounds Ltd)

Risk Level: L - Low Risk
Surface: Wet Pour



Finding: The surface is lifting at the edges and creating trip points
Action: Repair perimeter of surfacing to remove trip points

i 8 - Low Risk (Finding 5)

Item: Swings - 1 Bay 2 Seat (Flat)
Manufacturer: S M P (Playgrounds Ltd)

Risk Level: L - Low Risk
Surface: Wet Pour



Finding: There are trip hazards at the edges of the surface
Action: Reinstate surrounding surface levels to remove the trip points

i 6 - Low Risk (Finding 6)

Item: Swings - 1 Bay 2 Seat (Flat)
Manufacturer: S M P (Playgrounds Ltd)

Risk Level: L - Low Risk
Surface: Wet Pour



Finding: The paintwork on this item has been damaged or worn exposing the metal underneath which is rusting / corroding

Action: Treat affected areas and repaint

i 0 - Risk Assessment not Undertaken (Finding 7)

Item: Swings - 1 Bay 2 Seat (Flat)
Manufacturer: S M P (Playgrounds Ltd)

Risk Level: N - Risk Assessment not Undertaken
Surface: Wet Pour



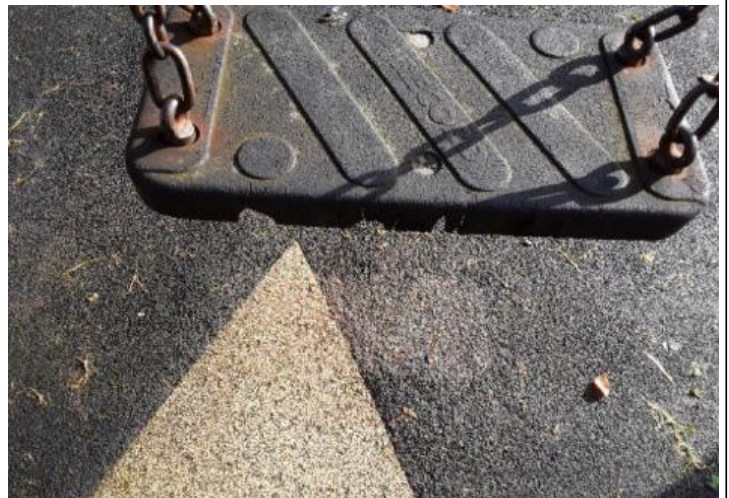
Finding: There is offensive graffiti present

Action: Remove as soon as practicable

i 8 - Low Risk (Finding 8)

Item: Swings - 1 Bay 2 Seat (Flat)
Manufacturer: S M P (Playgrounds Ltd)

Risk Level: L - Low Risk
Surface: Wet Pour



Finding: The seat has minor damage or wear

Action: Monitor for any further deterioration and replace as required

i 4 - Very Low Risk (Finding 9)

Item: Swings - 1 Bay 2 Seat (Flat)
Manufacturer: S M P (Playgrounds Ltd)

Risk Level: V - Very Low Risk
Surface: Wet Pour



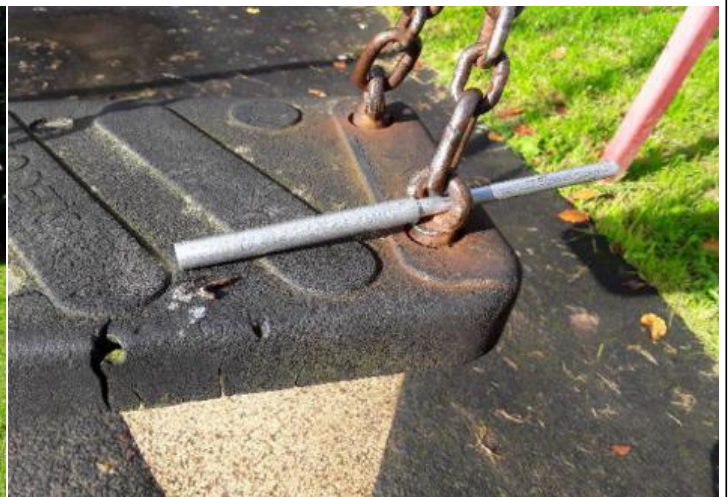
Finding: There is some minor damage to the surface

Action: Monitor for any further deterioration and repair as required

i 5 - Very Low Risk (Finding 10)

Item: Swings - 1 Bay 2 Seat (Flat)
Manufacturer: S M P (Playgrounds Ltd)

Risk Level: V - Very Low Risk
Surface: Wet Pour



Finding: The connecting links are in excess of 8.6mm and less than 12mm and fail the requirements of BS EN 1176 Part 1; clause 4.2.13, Chains

Action: Monitor use and replace with compliant links at the next maintenance cycle

i 5 - Very Low Risk (Finding 11)

Item: Swings - 1 Bay 2 Seat (Flat)
Manufacturer: S M P (Playgrounds Ltd)

Risk Level: V - Very Low Risk
Surface: Wet Pour



Finding: The chain openings are in excess of 8.6mm and do not meet the recommendations of BS EN 1176 Part 1

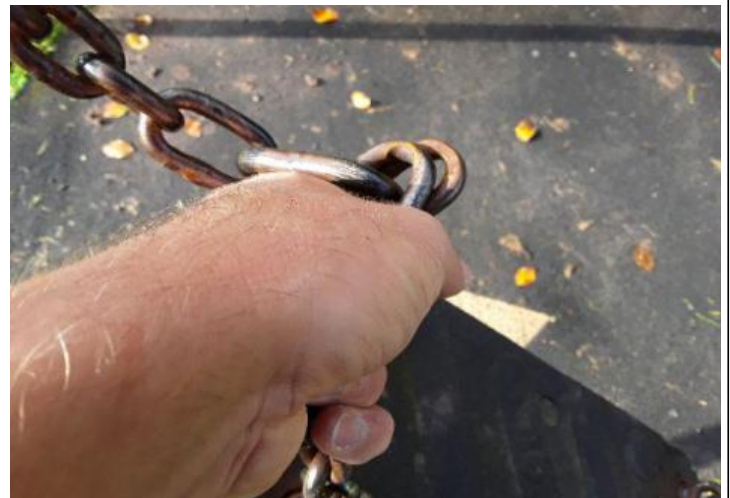
Action: Monitor - No remedial work recommended



12 - Moderate Risk (Finding 12)

Item: Swings - 1 Bay 2 Seat (Flat)
Manufacturer: S M P (Playgrounds Ltd)

Risk Level: M - Moderate Risk
Surface: Wet Pour



Finding: The chain links are worn in excess of 60% and require renewing

Action: Replace worn chains

i 8 - Low Risk (Finding 13)

Item: Swings - 1 Bay 2 Seat (Flat)
Manufacturer: S M P (Playgrounds Ltd)

Risk Level: L - Low Risk
Surface: Wet Pour



Finding: The shackles are worn in excess of 40% and require renewing

Action: Replace worn shackles

i 8 - Low Risk (Finding 14)

Item: Swings - 1 Bay 2 Seat (Flat)
Manufacturer: S M P (Playgrounds Ltd)

Risk Level: L - Low Risk
Surface: Wet Pour



Finding: The bushes are worn or missing

Action: Replace worn or missing bushes

i 4 - Very Low Risk (Finding 1)

Item: Swings - Single Point Swing - Type 3
Manufacturer: Not Identified

Risk Level: V - Very Low Risk
Surface: Grass Matrix Tiles



Finding: There is/are bolt cap covers missing or damaged on the item

Action: Replace missing or damaged bolt cap covers

i 6 - Low Risk (Finding 2)

Item: Swings - Single Point Swing - Type 3
Manufacturer: Not Identified

Risk Level: L - Low Risk
Surface: Grass Matrix Tiles



Finding: There is some strimmer / machinery damage apparent on the posts, this can penetrate the preservative applied to the timber and accelerate the rotting process

Action: Monitor for any deterioration (rot) and replace as required

i 8 - Low Risk (Finding 3)

Item: Swings - Single Point Swing - Type 3
Manufacturer: Not Identified

Risk Level: L - Low Risk
Surface: Grass Matrix Tiles



Finding: There is some evidence of rot in the timber posts

Action: Monitor for any further deterioration and replace as required

i 0 - Risk Assessment not Undertaken (Finding 4)

Item: Swings - Single Point Swing - Type 3
Manufacturer: Not Identified

Risk Level: N - Risk Assessment not Undertaken
Surface: Grass Matrix Tiles



Finding: Due to the dimensions of the timber it was not possible to ascertain the condition of the timber at its core without further testing. We recommend a Resi-PD survey to establish the condition of the timber at its core.

Action: Contact the Play Inspection Company office for further information

i 10 - Low Risk (Finding 5)

Item: Swings - Single Point Swing - Type 3
Manufacturer: Not Identified

Risk Level: L - Low Risk
Surface: Grass Matrix Tiles



Finding: There is damage apparent on the beam, this can penetrate the preservative applied to the timber and accelerate the rotting process

Action: Replace the damaged beam

i 8 - Low Risk (Finding 6)

Item: Swings - Single Point Swing - Type 3
Manufacturer: Not Identified

Risk Level: L - Low Risk
Surface: Grass Matrix Tiles



Finding: The grass mats are silted up and the soil is compacted; this may have an effect on the impact absorbing properties of the surface

Action: Consider HIC testing impact absorbing properties to ensure the correct surface qualities are maintained for the equipment and replace as required

! 15 - Moderate Risk (Finding 7)

Item: Swings - Single Point Swing - Type 3
Manufacturer: Not Identified

Risk Level: M - Moderate Risk
Surface: Grass Matrix Tiles



Finding: The surfacing is severely damaged

Action: Replace damaged areas of surfacing

i 8 - Low Risk (Finding 8)

Item: Swings - Single Point Swing - Type 3
Manufacturer: Not Identified

Risk Level: L - Low Risk
Surface: Grass Matrix Tiles



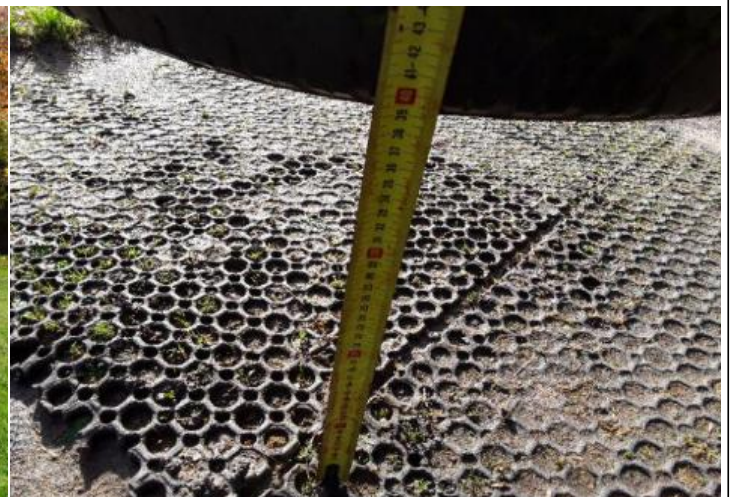
Finding: There are gaps opening between the grass mat tiles

Action: Provide additional ties or secure / reinstate surface which are also lifting

i 10 - Low Risk (Finding 9)

Item: Swings - Single Point Swing - Type 3
Manufacturer: Not Identified

Risk Level: L - Low Risk
Surface: Grass Matrix Tiles



Finding: The seat clearance from finished surface level to the underside of the seat is too low and does not meet the requirements of BS EN 1176 Part 2 (400mm minimum clearance required from rigid part of seat in most onerous position)

Action: Adjust seat clearance

i 6 - Low Risk (Finding 10)

Item: Swings - Single Point Swing - Type 3
Manufacturer: Not Identified

Risk Level: L - Low Risk
Surface: Grass Matrix Tiles



Finding: There is some notable evidence of chain wear

Action: Monitor for any further deterioration and replace when 40% worn

i 10 - Low Risk (Finding 11)

Item: Swings - Single Point Swing - Type 3
Manufacturer: Not Identified

Risk Level: L - Low Risk
Surface: Grass Matrix Tiles



Finding: There is some wear to the suspension joint

Action: Refer to manufacturer specification and service or replace as required

i 8 - Low Risk (Finding 1)

Item: Activity Equipment - Log Walk
Manufacturer: Not Identified

Risk Level: L - Low Risk
Surface: Grass



Finding: There are areas or parts of the timber posts that have rotted or are missing

Action: Replace all affected timbers

i 6 - Low Risk (Finding 2)

Item: Activity Equipment - Log Walk
Manufacturer: Not Identified

Risk Level: L - Low Risk
Surface: Grass



Finding: There is some strimmer / machinery damage apparent on the posts, this can penetrate the preservative applied to the timber and accelerate the rotting process

Action: Monitor for any deterioration (rot) and replace as required

i 6 - Low Risk (Finding 3)

Item: Activity Equipment - Log Walk
Manufacturer: Not Identified

Risk Level: L - Low Risk
Surface: Grass



Finding: Parts of the timber are rough or splintered

Action: Remove all rough or sharp edges

i 8 - Low Risk (Finding 1)

Item: Activity Equipment - Bridge
Manufacturer: Not Identified

Risk Level: L - Low Risk
Surface: Grass



Finding: There is algae or moss on the surface of the equipment

Action: Clean and treat appropriately

i 6 - Low Risk (Finding 2)

Item: Activity Equipment - Bridge
Manufacturer: Not Identified

Risk Level: L - Low Risk
Surface: Grass



Finding: The timber has a number of splits/shakes or air cracks and this may affect the stability or allow water ingress which will accelerate the rotting process

Action: Monitor to ensure the splits do not cross through fixing points of the structure and/or cause any instability

i 8 - Low Risk (Finding 3)

Item: Activity Equipment - Bridge
Manufacturer: Not Identified

Risk Level: L - Low Risk
Surface: Grass



Finding: There are areas or parts of the timber on the structure that have rotted

Action: Replace all affected timbers

i 6 - Low Risk (Finding 1)

Item: Rocking Equipment - Spring Aeroplane
Manufacturer: Fahr Industries

Risk Level: L - Low Risk
Surface: Sand



Finding: The paintwork on the spring has been damaged or worn exposing the metal underneath which is rusting
Action: Treat any rusting components and repaint

i 6 - Low Risk (Finding 1)

Item: Swings - 1 Bay 2 Seat (Cradle)
Manufacturer: S M P (Playgrounds Ltd)

Risk Level: L - Low Risk
Surface: Sand



Finding: There is some notable evidence of chain wear
Action: Monitor for any further deterioration and replace when 40% worn

i 6 - Low Risk (Finding 2)

Item: Swings - 1 Bay 2 Seat (Cradle)
Manufacturer: S M P (Playgrounds Ltd)

Risk Level: L - Low Risk
Surface: Sand



Finding: There is some wear to the shackles

Action: Monitor for any further deterioration and replace when 40% worn

i 4 - Very Low Risk (Finding 3)

Item: Swings - 1 Bay 2 Seat (Cradle)
Manufacturer: S M P (Playgrounds Ltd)

Risk Level: V - Very Low Risk
Surface: Sand



Finding: The bushes are showing signs of wear

Action: Monitor for any further deterioration and replace as required

i 4 - Very Low Risk (Finding 1)

Item: Activity Equipment - Leap Frog
Manufacturer: Not Identified

Risk Level: V - Very Low Risk
Surface: Grass



Finding: There is/are bolt cap covers missing or damaged on the item

Action: Replace missing or damaged bolt cap covers

i 6 - Low Risk (Finding 2)

Item: Activity Equipment - Leap Frog
Manufacturer: Not Identified

Risk Level: L - Low Risk
Surface: Grass



Finding: Parts of the timber are rough or splintered

Action: Remove all rough or sharp edges

i 6 - Low Risk (Finding 3)

Item: Activity Equipment - Leap Frog
Manufacturer: Not Identified

Risk Level: L - Low Risk
Surface: Grass



Finding: The timber has a number of splits/shakes or air cracks and this may affect the stability or allow water ingress which will accelerate the rotting process
Action: Monitor to ensure the splits do not cross through fixing points of the structure and/or cause any instability

i 6 - Low Risk (Finding 4)

Item: Activity Equipment - Leap Frog
Manufacturer: Not Identified

Risk Level: L - Low Risk
Surface: Grass



Finding: There is some evidence of rot in the timber posts
Action: Monitor for any further deterioration and replace as required

i 6 - Low Risk (Finding 5)

Item: Activity Equipment - Leap Frog
Manufacturer: Not Identified

Risk Level: L - Low Risk
Surface: Grass



Finding: A number of fixing(s) have worked loose

Action: Secure all loose fixings

i 8 - Low Risk (Finding 6)

Item: Activity Equipment - Leap Frog
Manufacturer: Not Identified

Risk Level: L - Low Risk
Surface: Grass



Finding: There is algae or moss on the surface of the equipment

Action: Clean and treat appropriately

i 6 - Low Risk (Finding 7)

Item: Activity Equipment - Leap Frog
Manufacturer: Not Identified

Risk Level: L - Low Risk
Surface: Grass



Finding: The item is slightly loose in its foundations

Action: Monitor for any further deterioration and repair as required

i 10 - Low Risk (Finding 1)

Item: Activity Equipment - Climbing Frame
Manufacturer: Lappset UK Ltd

Risk Level: L - Low Risk
Surface: Grass Matrix Tiles



Finding: This item of equipment has a fall height in excess of 2.5m and grass mats have been installed as an impact absorbing surface; these mats rely heavily on the underlying surface to achieve their critical fall height properties.

Action: Ensure surfacing certification is sought and consider HIC testing to ensure the surfacing is performing adequately

i 4 - Very Low Risk (Finding 2)

Item: Activity Equipment - Climbing Frame
Manufacturer: Lappset UK Ltd

Risk Level: V - Very Low Risk
Surface: Grass Matrix Tiles



Finding: There is/are inserts missing

Action: Replace missing inserts

i 6 - Low Risk (Finding 3)

Item: Activity Equipment - Climbing Frame
Manufacturer: Lappset UK Ltd

Risk Level: L - Low Risk
Surface: Grass Matrix Tiles



Finding: There is some damage to the item

Action: Monitor for any further deterioration and repair as required

i 6 - Low Risk (Finding 4)

Item: Activity Equipment - Climbing Frame
Manufacturer: Lappset UK Ltd

Risk Level: L - Low Risk
Surface: Grass Matrix Tiles



Finding: There is some damage to the pole

Action: Monitor for any further deterioration and repair as required

i 8 - Low Risk (Finding 1)

Item: Rotor Play - Carousel
Manufacturer: Lappset UK Ltd

Risk Level: L - Low Risk
Surface: Grass Matrix Tiles



Finding: The grass mats are silted up and the soil is compacted; this may have an effect on the impact absorbing properties of the surface

Action: Consider HIC testing impact absorbing properties to ensure the correct surface qualities are maintained for the equipment and replace as required

12 - Moderate Risk (Finding 2)

Item: Rotor Play - Carousel
Manufacturer: Lappset UK Ltd

Risk Level: M - Moderate Risk
Surface: Grass Matrix Tiles



Finding: The seat is severely damaged and requires replacing

Action: Replace damaged seat

4 - Very Low Risk (Finding 3)

Item: Rotor Play - Carousel
Manufacturer: Lappset UK Ltd

Risk Level: V - Very Low Risk
Surface: Grass Matrix Tiles



Finding: There is/are bolt cap covers missing or damaged on the item

Action: Replace missing or damaged bolt cap covers

i 0 - Risk Assessment not Undertaken (Finding 4)

Item: Rotor Play - Carousel
Manufacturer: Lappset UK Ltd

Risk Level: N - Risk Assessment not Undertaken
Surface: Grass Matrix Tiles



Finding: There is offensive graffiti present

Action: Remove as soon as practicable

i 6 - Low Risk (Finding 5)

Item: Rotor Play - Carousel
Manufacturer: Lappset UK Ltd

Risk Level: L - Low Risk
Surface: Grass Matrix Tiles



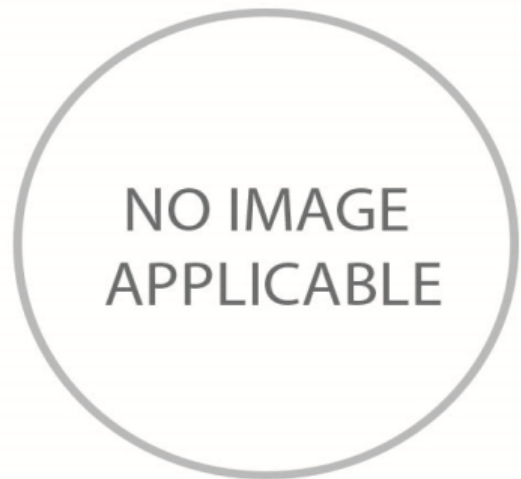
Finding: Parts of the timber are rough or splintered

Action: Remove all rough or sharp edges

i 0 - Risk Assessment not Undertaken (Finding 1)

Item: Other - Cable Runway
Manufacturer: Lappset UK Ltd

Risk Level: N - Risk Assessment not Undertaken
Surface: Grass Matrix Tiles



Finding: We have completed a visual inspection of the suspension links, cable and fixing points from ground level, however it is not possible to fully inspect these areas without either hiring equipment to gain access or removing the cable and suspension and inspecting at ground level. We recommend that the main cable and fixing security is thoroughly inspected at least in accordance with the manufacturers recommendations to check for wear, damage, security or internal rusting; this will help to ensure the continued safe use of the equipment

Action: Inspect in accordance with the manufacturers recommendations

i 9 - Low Risk (Finding 2)

Item: Other - Cable Runway
Manufacturer: Lappset UK Ltd

Risk Level: L - Low Risk
Surface: Grass Matrix Tiles



Finding: The tree canopy overhangs the equipment and is less than 2.0m away and the cable is not obstruction free

Action: Lift tree canopy to ensure a minimum clearance of 2.0m from the equipment

i 6 - Low Risk (Finding 3)

Item: Other - Cable Runway
Manufacturer: Lappset UK Ltd

Risk Level: L - Low Risk
Surface: Grass Matrix Tiles



Finding: There is some strimmer / machinery damage apparent on the posts, this can penetrate the preservative applied to the timber and accelerate the rotting process

Action: Monitor for any deterioration (rot) and replace as required

i 8 - Low Risk (Finding 4)

Item: Other - Cable Runway
Manufacturer: Lappset UK Ltd

Risk Level: L - Low Risk
Surface: Grass Matrix Tiles



Finding: The grass mats are silted up and the soil is compacted; this may have an effect on the impact absorbing properties of the surface

Action: Consider HIC testing impact absorbing properties to ensure the correct surface qualities are maintained for the equipment and replace as required

15 - Moderate Risk (Finding 5)

Item: Other - Cable Runway
Manufacturer: Lappset UK Ltd

Risk Level: M - Moderate Risk
Surface: Grass Matrix Tiles



Finding: The surfacing is severely damaged

Action: Replace damaged areas of surfacing

10 - Low Risk (Finding 6)

Item: Other - Cable Runway
Manufacturer: Lappset UK Ltd

Risk Level: L - Low Risk
Surface: Grass Matrix Tiles



Finding: The grass has eroded within the impact area of the equipment and may not provide the necessary impact attenuating properties for the equipment fall height; the surface may also be slippery in wet weather

Action: Reinstate the grass or provide an all weather surface

i 8 - Low Risk (Finding 7)

Item: Other - Cable Runway
Manufacturer: Lappset UK Ltd

Risk Level: L - Low Risk
Surface: Grass Matrix Tiles



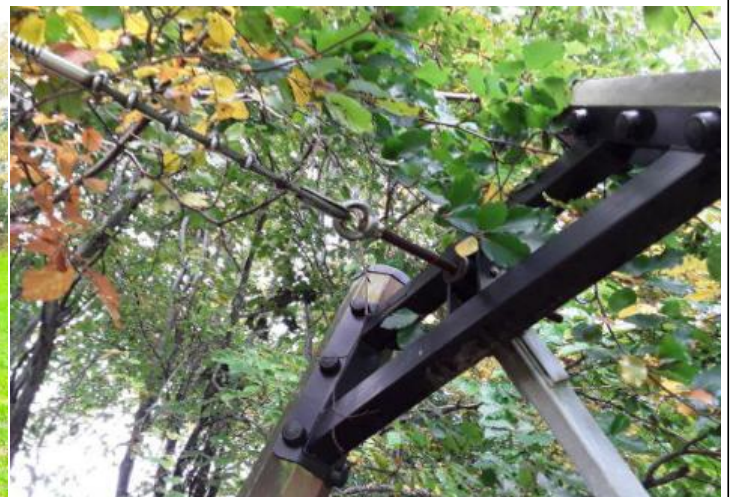
Finding: The dampening spring or tyre is damaged or broken on the item

Action: Replace spring or tyre

i 6 - Low Risk (Finding 8)

Item: Other - Cable Runway
Manufacturer: Lappset UK Ltd

Risk Level: L - Low Risk
Surface: Grass Matrix Tiles



Finding: The fixings are corroding

Action: Monitor for any further deterioration and replace as required

i 5 - Very Low Risk (Finding 9)

Item: Other - Cable Runway
Manufacturer: Lappset UK Ltd

Risk Level: V - Very Low Risk
Surface: Grass Matrix Tiles



Finding: The nylon inserts are worn or missing at the point the cable enters the traveller

Action: Replace worn or missing inserts as required

i 0 - Risk Assessment not Undertaken (Finding 10)

Item: Other - Cable Runway
Manufacturer: Lappset UK Ltd

Risk Level: N - Risk Assessment not Undertaken
Surface: Grass Matrix Tiles



Finding: The seat connection cannot be inspected without dismantling the seat

Action: Dismantle the seat to inspect the seat connection for wear

i 8 - Low Risk (Finding 11)

Item: Other - Cable Runway
Manufacturer: Lappset UK Ltd

Risk Level: L - Low Risk
Surface: Grass Matrix Tiles



Finding: The seat is less than 2.0 metres from the post when extended at 45 degrees at the end of the area of travel and does not meet the requirements of BS EN 1176 Part 4

Action: Adjust the cable stop position to ensure the minimum distance is maintained

i 5 - Very Low Risk (Finding 12)

Item: Other - Cable Runway
Manufacturer: Lappset UK Ltd

Risk Level: V - Very Low Risk
Surface: Grass Matrix Tiles



Finding: Fixing Pins have been installed in the impact areas of the grass mats

Action: Remove pins from impact areas

i 8 - Low Risk (Finding 1)

Item: Other - Embankment Slide
Manufacturer: Lappset UK Ltd

Risk Level: L - Low Risk
Surface: Grass Matrix Tiles



Finding: The grass mats are silted up and the soil is compacted; this may have an effect on the impact absorbing properties of the surface

Action: Consider HIC testing impact absorbing properties to ensure the correct surface qualities are maintained for the equipment and replace as required

i 6 - Low Risk (Finding 2)

Item: Other - Embankment Slide
Manufacturer: Lappset UK Ltd

Risk Level: L - Low Risk
Surface: Grass Matrix Tiles



Finding: There is some tree debris on the surfacing

Action: Remove and maintain

i 5 - Very Low Risk (Finding 3)

Item: Other - Embankment Slide
Manufacturer: Lappset UK Ltd

Risk Level: V - Very Low Risk
Surface: Grass Matrix Tiles



Finding: Fixing Pins have been installed in the impact areas of the grass mats **Action:** Remove pins from impact areas

i 8 - Low Risk (Finding 4)

Item: Other - Embankment Slide
Manufacturer: Lappset UK Ltd

Risk Level: L - Low Risk
Surface: Grass Matrix Tiles



Finding: There is moderate damage to the surface **Action:** Replace the damaged areas of surfacing

i 4 - Very Low Risk (Finding 5)

Item: Other - Embankment Slide
Manufacturer: Lappset UK Ltd

Risk Level: V - Very Low Risk
Surface: Grass Matrix Tiles



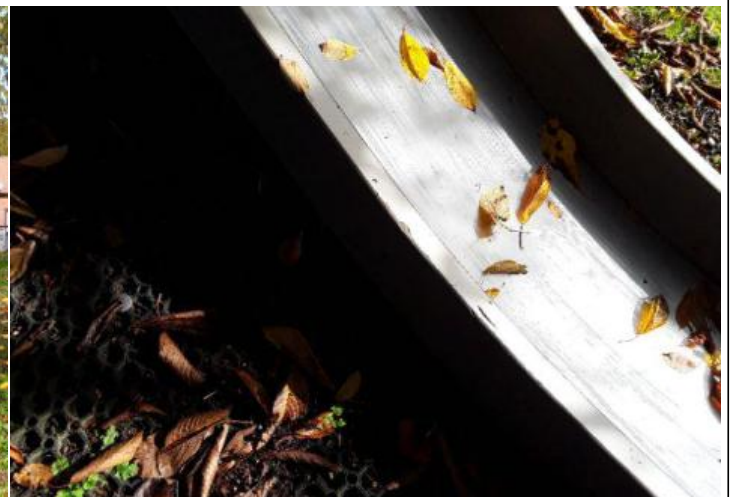
Finding: There are a number of dents in the slide surface

Action: Monitor for any further deterioration and repair as required

i 6 - Low Risk (Finding 6)

Item: Other - Embankment Slide
Manufacturer: Lappset UK Ltd

Risk Level: L - Low Risk
Surface: Grass Matrix Tiles



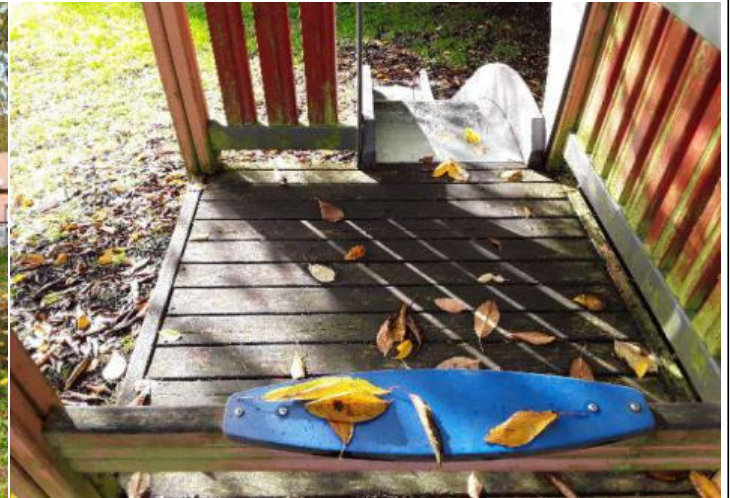
Finding: The side of the slide is damaged

Action: Monitor for any further deterioration and repair as required

i 8 - Low Risk (Finding 7)

Item: Other - Embankment Slide
Manufacturer: Lappset UK Ltd

Risk Level: L - Low Risk
Surface: Grass Matrix Tiles



Finding: There is algae or moss on the surface of the equipment

Action: Clean and treat appropriately

i 4 - Very Low Risk (Finding 8)

Item: Other - Embankment Slide
Manufacturer: Lappset UK Ltd

Risk Level: V - Very Low Risk
Surface: Grass Matrix Tiles



Finding: There is/are bolt cap covers missing or damaged on the item

Action: Replace missing or damaged bolt cap covers

i 10 - Low Risk (Finding 1)

Item: Other - Boulders
Manufacturer: Natural Feature

Risk Level: L - Low Risk
Surface: Grass



Finding: The rocks and/or boulders have moss/algae growth apparent

Action: Clean and maintain

i 8 - Low Risk (Finding 1)

Item: Gates - Posts
Manufacturer: Owner/Operator

Risk Level: L - Low Risk
Surface: Grass



Finding: There are areas or parts of the timber on the structure that have rotted

Action: Replace all affected timbers

i 6 - Low Risk (Finding 2)

Item: Gates - Posts
Manufacturer: Owner/Operator

Risk Level: L - Low Risk
Surface: Grass



Finding: There is some strimmer / machinery damage apparent on the posts, this can penetrate the preservative applied to the timber and accelerate the rotting process

Action: Monitor for any deterioration (rot) and replace as required

i 6 - Low Risk (Finding 3)

Item: Gates - Posts
Manufacturer: Owner/Operator

Risk Level: L - Low Risk
Surface: Grass



Finding: The timber has a number of splits/shakes or air cracks and this may affect the stability or allow water ingress which will accelerate the rotting process

Action: Monitor to ensure the splits do not cross through fixing points of the structure and/or cause any instability

i 6 - Low Risk (Finding 4)

Item: Gates - Posts
Manufacturer: Owner/Operator

Risk Level: L - Low Risk
Surface: Grass



Finding: Parts of the timber are rough or splintered

Action: Remove all rough or sharp edges

! 12 - Moderate Risk (Finding 5)

Item: Gates - Posts
Manufacturer: Owner/Operator

Risk Level: M - Moderate Risk
Surface: Grass



Finding: There are areas or parts of the timber post that have rotted and failed under testing

Action: Replace all affected timbers and remove damaged timber from site