



SHROPSHIRE HEALTH AND WELLBEING BOARD

Report

Meeting Date	19.06.25				
Title of report	Shropshire Integrated Place Partnership (ShIPP) Update				
This report is for (You will have been advised which applies)	Discussion and agreement of recommendations		Approval of recommendations (With discussion by exception)	Information only (No recommendations)	x
Reporting Officer & email	Rachel Robinson Rachel.robinson@shropshire.gov.uk				
Which Joint Health & Wellbeing Strategy priorities does this report address? Please tick all that apply	Children & Young People	x	Joined up working		x
	Mental Health	x	Improving Population Health		x
	Healthy Weight & Physical Activity	x	Working with and building strong and vibrant communities		x
	Workforce	x	Reduce inequalities (see below)		x
What inequalities does this report address?	The ShIPP Committee works to reduce inequalities and encourage all programmes and providers to support those most in need.				

Report content

1. Executive Summary

The purpose of Shropshire Integrated Place Partnership (ShIPP) is Shropshire's Place Partnership Committee.

It is a partnership with shared collaborative leadership and responsibility, enabled by ICS governance and decision-making processes. Clinical/care leadership is central to the partnership, to ensure that services provide the best quality evidence-based care and support for our people, improving outcomes and reducing health inequalities.

It is expected that through the programmes of ShIPP, and routine involvement and coproduction local people and workforce can feed ideas and information to inform and influence system strategy and priority development.

The new governance of the ICB has named ShIPP as a formal subcommittee of the ICB Board. This report provides an update of discussions in March and May 2025.

2. Recommendations – N/A

3. Report

20th March 2025 Meeting

The ShIPP Committee meeting of March 20th was well attended and there was good discussion and engagement across the membership, Andy Begley chaired the meeting.

1.1. Summary of Key Discussions and Decisions

1.1.1. ShIPP meets Bi-monthly

1.1.2. ShIPP Agenda 20th March meeting

- ShIPP Priority Update and 2025/26 Strategic Plan, following development session in February - Naomi Roche/Carla Bickley
- Dementia MDT – Jess Harvey

- STW Diabetes Programme update – Fiona Smith
- Neighbourhood working & Hub Subgroup update – Carla Bickley

1.1.3. The meeting was quorate

1.1.4. There were no conflict of interests declared

1.1.5. The meeting was well attended

1.2. Recommendations to the Board

1.2.1. The Board is asked to :

- Note the briefing report from the Shropshire Integrated Place Partnership.
- The ICB Board to note that the ShIPP 2025/26 Strategic Plan has been accepted by the committee.
- Note that the presentation on Dementia MDT raised an issue for escalation regarding data protection and sharing agreements. The Chair asked that the ICB provide guidance and resolution on this issue. The Board is also asked to note the support from ShIPP regarding the multi-disciplinary working method.
- Note ShIPP's support for the STW Diabetes Programme update and the committee's feedback regarding a focus on prevention and the discrepancies between funding for weight management services between Shropshire and Telford & Wrekin.
- Note progress in the ShIPP Neighbourhood working & Hub Subgroup; the change of Chair to Carla Bickley and the introduction of a project management approach to the work with formation of further subgroups to feedback on workstreams.

1.3. Key Risks and Mitigations

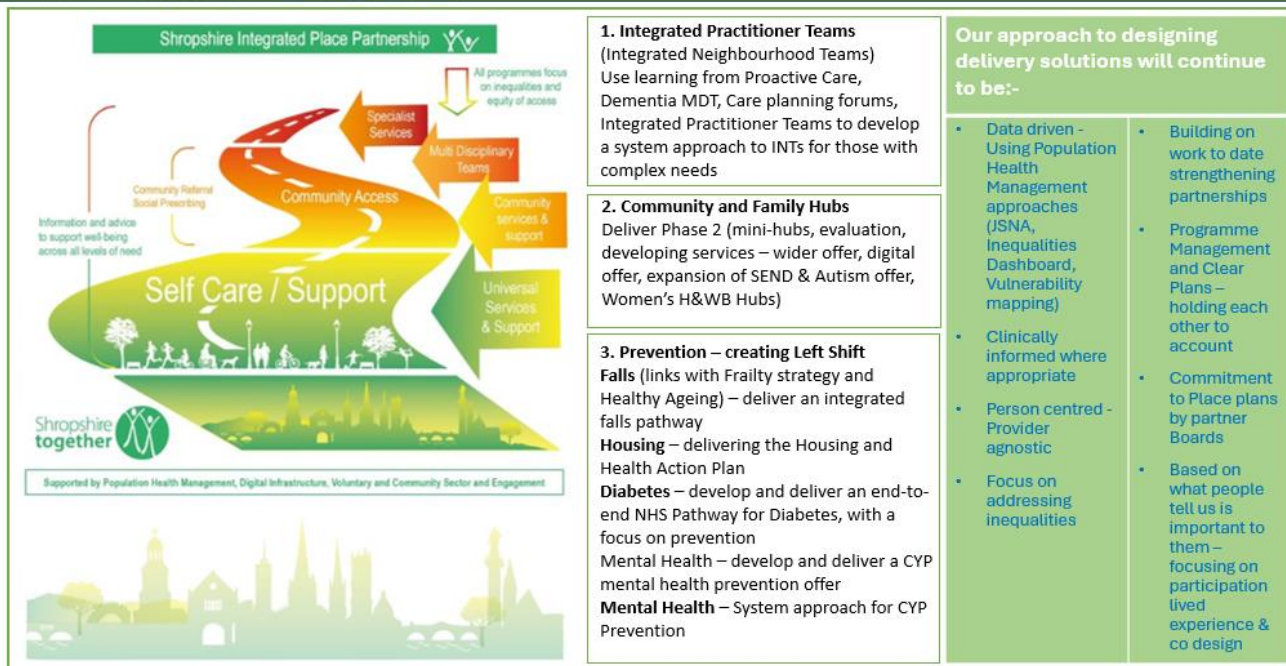
- The Committee noted risks around data protection and data sharing issues to the development of multi-disciplinary working across the system
- The ICB Board is asked to seek a resolution for the sharing of data across organisations, a memorandum of understanding was suggested.

1.4. Performance and Assurance

1.4.1. Assure - positive assurances and highlights of note:

- ShIPP Priority Update and 2025/26 Strategic Plan: following a development session in February the priorities and strategic plan was presented, with deliverables for the first year

ShIPP Priorities 2025-2027



- **Dementia Multi Disciplinary Teams:** Dementia MDT's are part of ShIPP's priorities under Integrated Practitioner Teams. A pilot project has been under development in the South East of Shropshire and shows positive feedback and improved outcomes for all parties. Staff across partnership agencies, people living with dementia and their carers, find the integrated approach more helpful and efficient. The approach was commended for further roll out.
- **STW Diabetes Programme:** links with ShIPP's Prevention priority. The update included an emphasis on prevention, care optimization and community engagement.
- **Neighbourhood working & Hub Subgroup:** the group's new chair (Carla Bickley) outlined the adoption of the PMO process to manage workstreams and plans to initially convene a governance, reporting, planning and alignment working group to address initial aspects of development.

1.5. Alignment to ICB Objectives and Core Functions

1.5.1 The committee's discussion directly aligns with the Joint Forward Plan's key elements of:

- Taking a person-centred approach (including proactive prevention, self-help, and population health to tackle health inequalities and wider inequalities).
- Improving place-based delivery, having integrated multi-professional teams providing a joined-up approach in neighbourhoods, supporting our citizens and providing care closer to home, where possible.

ShIPP is a crucial part of the development and delivery of the Joint Forward Plan and ShIPP's new strategy & priorities have been developed with the ICB Strategy Team and our other partners.

1.6. Next Steps & Forward Plan

1.6.1.

- ShIPP 2025/26 Strategic Plan was approved by the committee with the caveat that key performance indicators and impact were clearly defined.
- The Dementia MDT update highlighted significant challenges around data sharing and protection, this requires a system wide resolution.

- The STW Diabetes update provoked discussion on the difference in funding of commissioned weight management services across Shropshire Telford & Wrekin. Also the impact that the introduction of weight loss drugs will have on general practice and pharmacy.

Any other business:

- New GP Board Co-Chairs: Charlotte Hart and Jess Harvey announced their appointment as the new co-chairs of the GP Board, emphasizing their commitment to collaborative working and strengthening relationships.
- Deborah Shepherd announced that she will be leaving her role as PCN Clinical Director in May but will continue to attend meetings as the GP Partner Member of the ICB board.

15th May 2025 Meeting

1.1. Summary of Key Discussions and Decisions

1.1.1. ShIPP meets Bi-monthly

1.1.2. ShIPP Agenda 15th May meeting

- Welcome and Apologies, notes from the last meeting and actions
- MSK inequalities report - Arthritis and Musculoskeletal Alliance (ARMA)
- Place Prevention Funding & Draft Prevention Allocation Resource Framework
- ICB Update – verbal report
- Draft Pharmaceutical Needs Assessment
- Healthwatch Report – Pharmacy Services in Shropshire
- 2025-26 Better Care Fund Plan
- Neighbourhood Working & Hub Subgroup verbal update

1.1.3. The meeting was quorate

1.1.4. No conflict of interests declared

1.1.5. The meeting was well attended

1.2. Recommendations to the Board

1.2.1. The Board is asked to:

- Note this briefing report from the Shropshire Integrated Place Partnership.
- Note the **MSK Health Inequalities & Deprivation Report** was presented by CO of ARMA Sue Brown, (can be read here [Musculoskeletal-Health-Inequalities-and-Deprivation-report_v08-SMALL.pdf](#)).
- Note the proposed **Place Prevention Funding Allocation Resource Framework**, was presented to ShIPP and the commitment to the immediate prevention priorities with a commitment to further develop the framework to invite bids to support the prevention shift aligned to ShIPP priorities and bring it back to a future meeting.
- Note that the **Draft Pharmaceutical Needs Assessment (PNA)** was presented to the group and will be approved at a later meeting of the Health & Wellbeing Board for consultation.
- Note that the **Healthwatch Report “Pharmacy Services in Shropshire”** was presented to the committee and was commended
- Note that an update on the **Better Care Fund** was presented to ShIPP and will go to the Health & Wellbeing Board for approval.
- Note the progress in the **ShIPP Neighbourhood working & Hub Subgroup**; principally the change of name to the ShIPP Accelerator Group.

1.3. Key Risks and Mitigations

There were no risks raised at this meeting

1.4. Performance and Assurance

1.4.1. **Assure** - positive assurances and highlights of note:

- **The MSK Health Inequalities & Deprivation report** by ARMA was presented to the committee and with actions to follow up and link in with appropriate leads within the system and individual organisations.
- **The Place Prevention Funding & Draft Prevention Allocation Resource Framework:** the Committee noted the proposed framework, supported the two applications in principle for CYP Social Prescribing and VCSA for up to 100K each to be top sliced subject a bid template being complete and agreed, the remaining would be allocated via the bid framework aligned to the boards prevention priorities. This is an important element of the commitment to shift to prevention.
- **Draft PNA** was presented for information and was discussed, this highlights gaps in current service provision.
- **The Healthwatch Report “Pharmacy Services in Shropshire”** was presented to the committee and discussed
- **The Better Care Fund** update was discussed, an offer was made regarding mapping, to help integrate the BCF with neighbourhood working.
- **ShIPP Neighbourhood working & Hub Subgroup** the committee noted the name change to the “ShIPP Accelerator Group”. It was agreed that the group will return with new governance, project plans and proposals for next steps.

1.5. Alignment to ICB Objectives and Core Functions

1.5.1 The committee’s discussion directly aligns with the Joint Forward Plan’s key elements of:

- Taking a person-centred approach (including proactive prevention, self-help, and population health to tackle health inequalities and wider inequalities).
- Improving place-based delivery, having integrated multi-professional teams providing a joined-up approach in neighbourhoods, supporting our citizens and providing care closer to home, where possible.

ShIPP is a crucial part of the development and delivery of the Joint Forward Plan and ShIPP’s new strategy & priorities have been developed with the ICB Strategy Team and our other partners.

1.6. Next Steps & Forward Plan

1.6.1.

- **The MSK Health Inequalities & Deprivation report** will be shared with Geraldine Vaughan, system MSK lead.
- **Place Prevention Funding & Draft Prevention Allocation Resource Framework:** will be brought back to a future meeting.
- **ShIPP Neighbourhood working & Hub Subgroup** (ShIPP Accelerator Group) will return to ShIPP with new governance, project plans and proposals for next steps.

Risk assessment and opportunities appraisal	
Financial implications	
Climate Change Appraisal as applicable	

Where else has the paper been presented?	System Partnership Boards	ICB Board
	Voluntary Sector	
	Other	
List of Background Papers N/A		
Cabinet Member (Portfolio Holder) or your organisational lead e.g., Exec lead or Non-Exec/Clinical Lead Rachel Robinson – Executive Director of Public Health Cllr Bernie Bentick - Shropshire Council Portfolio Holder for Health and Public Protection		
Appendices None		