

Shropshire Council

Draft Shropshire Community Hierarchy



Contents

1. Introduction	2
Shropshire Overview	2
What is a Community Hierarchy?	2
Approach to the Shropshire Community Hierarchy	2
Purpose of this Document	2
Use of the Shropshire Community Hierarchy	2
2. Policy Context	4
Local Policy	4
National Policy	4
3. Methodology	7
Key Principles	7
Stage 1: Identification of Communities	7
Stage 2: Analysis of Communities	8
Community Size	8
Connectivity	8
Stage 3: Categorisation of Communities	15
Community Categories	15
Community Category Thresholds	16
4. Assessment	18
Stage 1: Identification of Communities	18
Stage 2: Analysis of Communities	29
Stage 3: Categorisation of Communities	42
5. Conclusion	48
Methodology	48
Assessment	48
Application of the 'Community Hierarchy'	48

1. Introduction

Shropshire Overview

- 1.1. Shropshire¹ is a large, diverse, and predominantly rural county, containing hundreds of communities of various size, function, character, and identity.
- 1.2. These communities include towns, villages, other predominantly built-up areas, hamlets, and other named locations consisting of scattered groups of houses.
- 1.3. Due to these characteristics it is considered beneficial to produce a 'community hierarchy'.

What is a Community Hierarchy?

- 1.4. A 'community hierarchy' involves an assessment of *specific and consistent criteria* on community characteristics to gain a greater understanding of community function and group them based on their similarities.
- 1.5. Generally, the larger and more connected communities are categorised higher in the 'community hierarchy' and the smaller and less connected communities are categorised lower within the 'community hierarchy'.

Approach to the Shropshire Community Hierarchy

- 1.6. In positively responding to the characteristics of Shropshire, it is considered the *specific and consistent criteria* considered should address community size and community connectivity.

Purpose of this Document

- 1.7. This document summarises the assessment methodology, results of the assessment, and its application to determine a 'community hierarchy' for Shropshire.

Use of the Shropshire Community Hierarchy

- 1.8. The 'community hierarchy' will form a key part of the evidence that underpins the next Shropshire Local Plan. Specifically, it will inform decisions on:
 - a. The overarching approach to the strategic distribution of development in the spatial strategy of the next Local Plan.

¹All references to Shropshire relate to Shropshire Council's administrative area.
Shropshire Community Hierarchy

- b. The role of individual communities in supporting the overarching approach to the strategic distribution of development of the spatial strategy in the next Local Plan.
 - c. The specific strategies for individual communities within the next Local Plan.
- 1.9. However, the 'community hierarchy' does not itself define the approach to the strategic distribution of development within the spatial strategy. This is because other evidence must be considered - including that related to infrastructure capacity, demand for housing and employment, constraints and opportunities within our communities.

2. Policy Context

Local Policy

- 2.1. The adopted Local Plan for Shropshire currently consists of the Core Strategy (2011) and Site Allocations and Management of Development (SAMDev) Plan (2015), collectively covering the period 2006-2026.
- 2.2. Alongside 'made' Neighbourhood Plans, the adopted Local Plan forms the Development Plan for Shropshire – the starting point when determining planning applications.
- 2.3. Local Planning Authorities, such as Shropshire Council, are required to regularly update the Plan, at least every five years. The maintenance of an up-to-date Local Plan allows a Council to apply significant weight to its policies in decision making.
- 2.4. Over recent years there have been significant changes to planning nationally. Given these changes, it is considered that a full review of our Local Plan is now required.
- 2.5. This 'community hierarchy' will form part of the evidence base for the next Local Plan.

National Policy

- 2.6. The National Planning Policy Framework (NPPF) sets out Government's policies for plan-making and decision-taking in England. In this way, it provides a framework for Local Planning Authorities producing Development Plans.
- 2.7. It is considered this 'community hierarchy' can support the next Shropshire Local Plan in aligning with a number of key principles in the NPPF for the preparation of Development Plans. This includes:
 - a. Development Plans should *"be prepared with the objective of contributing to the achievement of sustainable development"* (paragraph 16(a)).
 - b. Strategic policies within Development Plans should *"set out an overall strategy for the pattern, scale and design quality of places..."* (paragraph 20).
 - c. To support sustainable transport objectives, Development Plans should ensure they are *"actively managing patterns of growth..."*, focusing significant development at *"locations which are or can be made sustainable, through limiting the need to travel and offering a genuine choice of transport modes"* whilst recognising that *"opportunities to maximise sustainable transport solutions will vary*

between urban and rural areas, and this should be taken into account in both plan-making and decision-making” (paragraphs 109 & 110).

- d. Planning policies and decisions should help create the conditions in which businesses can invest, expand and adapt. The approach taken should allow each area to build on its strengths, counter any weaknesses and address the challenges of the future. Planning policies should set out a clear economic vision and strategy which positively and proactively encourages sustainable economic growth and recognises and addresses the specific locational requirements of different sectors (paragraphs 85, 86 and 87).
 - e. To support the vitality of town centres, *“planning policies and decisions should support the role that town centres play at the heart of local communities...”* planning policies should *“define a network and hierarchy of town centres and promote their long-term vitality and viability...”* (paragraph 90);
 - f. To support Government’s objective of *“...significantly boosting the supply of homes, it is important that a sufficient amount and variety of land can come forward where it is needed...”* and that *“...the needs of groups with specific housing requirements are addressed...”* (paragraph 61). A key mechanism for this is Development Plans.
 - g. To promote sustainable development in rural areas, housing should be *“located where it will enhance or maintain the vitality of rural communities.”* As such, planning policies in Development Plans should *“identify opportunities for villages to grow and thrive, especially where this will support local services”* and recognise that where there are groups of smaller communities *“development in one village may support services in a village nearby”* (paragraph 83).
 - h. Planning policies in the Development Plan should *“avoid the development of isolated homes in the countryside...”* (paragraph 84).
- 2.8. Government has recently consulted on proposed changes to the NPPF. It is also considered that this ‘community hierarchy’ can support the next Shropshire Local Plan in aligning with many of the key principles for the preparation of Development Plans in the consultation draft of the NPPF. With specific regard to the draft plan-making policies, this includes:
- a. Draft Policy PM2: Local Plans should set out *“a positive vision and spatial strategy...”*.
 - b. Draft Policy PM8: The preparation of Development Plans should be underpinned by evidence that is *“relevant...proportionate...and drawn from suitable and reliable sources that are sufficiently up-to-date.”*

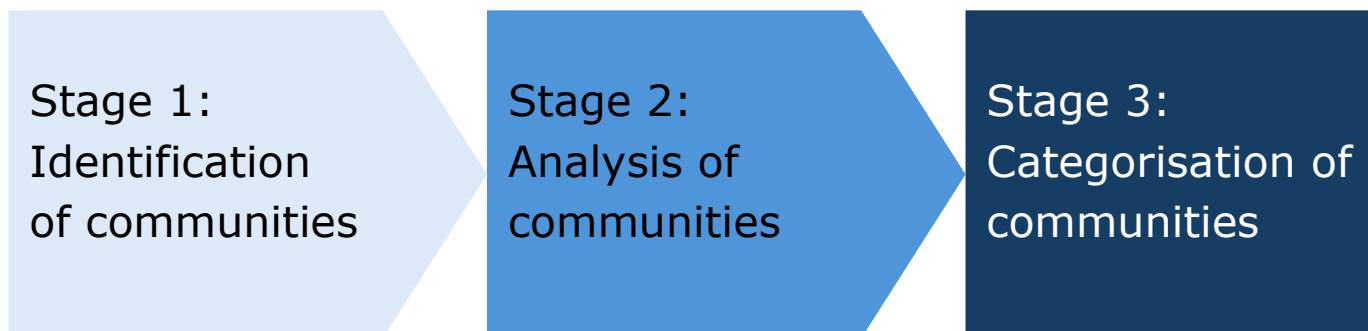
- c. Draft Policy S1: Development Plans should be positive *"providing for new development, and improvement of the environment, in a way which promotes a sustainable pattern of growth..."*.
- d. Draft Policy S2: Development Plans should include a *"spatial strategy setting clear expectations for the location of development..."* including the identification of *"settlements within the development plan area..."*.
- e. Draft Policy CC1: To support a proactive approach to mitigating climate change and support the transition to net zero, Development Plans should propose *"development patterns through their spatial strategy and allocations which: can help contribute to radical reductions in greenhouse gas emissions..."*
- f. Draft Policies HO3-6: To support the delivery of a sufficient supply of homes, Development Plans should identify a sufficient supply and mix of sites to meet or exceed the housing requirement and meet the needs of different groups and supports the *"vitality of rural communities and enable villages to grow and thrive, especially where this will support local services..."*
- g. Draft Policy E1: To support a strong and effective economy, Development Plans should *"set out a clear economic vision and strategy, which takes a positive, proactive and realistic approach to encouraging sustainable economic growth in both urban and rural areas..."*. This should have regard to the *"...specific locational requirements of different sectors..."*
- h. Draft Policy TC1: Development Plans should *"promote the long-term vitality and viability of town centres..."*.
- i. Draft Policy GB4: Any alterations to Green Belt boundaries should *"promote sustainable patterns of development..."*.
- j. Draft Policy TR1: Development Plans should consider sustainable transport opportunities from the outset so *"it is reflected in the vision for the plan area and its specific proposals, and forms an integral part of a plan's strategy for creating well-designed, sustainable, inclusive and popular places..."* This includes *"locating proposed development where it can support sustainable patterns of movement and make effective use of existing or proposed transport infrastructure..."*.
- k. Draft Policy HC1: Development Plans should promote *"...healthy and inclusive places..."*.
- l. Draft Policy P1: Development Plans should consider wider opportunities to reduce air, water, soil and noise pollution *"...through the spatial strategy..."*.

3. Methodology

Key Principles

- 3.1. To ensure a proportionate and robust process that is responsive to the characteristics of Shropshire underpins this 'community hierarchy', a multi-stage assessment process has been identified.
- 3.2. The stages of this assessment are detailed in Figure 1.

Figure 1: Stages of the 'Community Hierarchy' Assessment



Stage 1: Identification of Communities

- 3.3. The first stage of the assessment involves identification of those communities suitable for inclusion in the 'community hierarchy'.
- 3.4. Recognising the diverse size, function, character and identity of our communities, Shropshire Council determined to include all 'recognisable named communities'. A 'recognisable named community' comprises towns, villages, other predominantly built-up areas, hamlets, and other named locations consisting of scattered groups of houses.
- 3.5. Whether a scattered group of houses constitutes a community is a matter of judgment in each case, particularly where the number of dwellings is small or dispersed. This judgement is based on the number of houses, their proximity to each other, and whether the houses are occupied by households from different families.).
- 3.6. A 'recognisable named community' will usually:
 - a. Be named on the Ordnance Survey map.
 - b. Be referred to in a consistent way by local people.
 - c. Have a place name that is shared by a number of dwellings (although this may not be reflected in the postal address).
- 3.7. In some instances 'recognised named communities' closely adjoin and function together. In such circumstances, they may be 'grouped' for the purpose of this 'community hierarchy'.

Stage 2: Analysis of Communities

- 3.8. The second stage of the assessment involves the analysis of communities using *specific and consistent criteria*.
- 3.9. In positively responding to the characteristics of Shropshire as a large, diverse, and predominantly rural county, Shropshire Council concluded that the *specific and consistent criteria* considered should address community size and community connectivity.

Community Size

- 3.10. Community size is a positive consideration when determining the 'community hierarchy' for Shropshire as size influences such factors as existing: infrastructure provision; active travel and public transport opportunities; local employment opportunities; and service proximity and variety. Size also often influences levels of housing and employment need and opportunity that exists within the community.
- 3.11. Key indicators of the size of a community are **resident population** and the **number of dwellings**. As such, Shropshire Council determined these indicators are appropriate to inform the 'community hierarchy' for Shropshire.
- 3.12. To estimate the resident population of a community and number of dwellings within a community a series of datasets are utilised. These are latest address point data, Census (2021) data, and the latest Mid-Year Population Estimate at small geographies at the time of assessment (2024) data.
- 3.13. For the avoidance of doubt, where communities cross the Shropshire boundary only the resident population and number of dwellings within the part of the community located in Shropshire has been included within this assessment.

Connectivity

- 3.14. Connectivity (specifically to employment, services and social engagements) is a positive consideration when determining an appropriate 'community hierarchy' as it illustrates the ability for those living and working within a community to access a variety of employment, services and social engagement opportunities - supporting the ability to meet their needs.
- 3.15. Shropshire Council considers the **maximum 'overall connectivity score' for a community** resulting from the new Department for Transport Connectivity Metric (which can be analysed using the associated Connectivity Tool) constitutes an effective indicator of

connectivity to employment, services and social engagements. As such, Shropshire Council concluded this data is appropriate to inform the 'community hierarchy' for Shropshire.

- 3.16. For the avoidance of doubt, this metric assesses the ability to access all potential destinations for employment, services and social engagements via public transport and active travel. As such, it is **not limited** to those located within a community, instead it considers all those accessible to the community. This includes where employment, services and social engagement opportunities are across the Local Authority boundary, including in Wales.
- 3.17. A publicly accessible version of the Connectivity Tool is available at: <https://connectivity-tool-lite.dft.gov.uk/index>
- 3.18. The use of this tool is supported by a Written Ministerial Statement from the Secretary of State for Transport addresses the Connectivity Tool which includes recognition that *"This landmark platform will serve as the new national metric of connectivity, transforming how we plan for new development and the transport infrastructure needed to support it, ensuring new homes and services can be easily accessed by sustainable modes of transport, helping kickstart economic growth, and delivering the Government's house building targets."*²
- 3.19. It is also supported by correspondence from the Chief Planner at MHCLG who specified in correspondence to Local Planning Authorities that *"The Connectivity Tool has been explicitly designed for planning professionals working in transport and the built environment. It enables plan-makers and decision-takers to locate development in the most sustainable locations and plan for the transport infrastructure required to support it."*³
- 3.20. The Department for Transport provide a detailed overview of the methodology utilised in the preparation of this Connectivity Metric on the GOV.UK website: <https://gov.uk/government/publications/transport-connectivity-metric/transport-connectivity-metric>
- 3.21. In summary, the Connectivity Metric measures an individual's ability to reach employment, services and social engagements. To do so, it *"measures opportunity to travel to various destinations, weighted by people's overall proclivity to take those options."*

²<https://questions-statements.parliament.uk/written-statements/detail/2025-12-11/hcws1155>

³https://assets.publishing.service.gov.uk/media/694294709273c48f554cf4eb/Chief_Planner_Newsletter_December_2025.pdf

3.22. This calculation involves consideration of:

1. The potential '*origin or trips*'.
2. The potential '*destination of trips*'.
3. The *transport infrastructure network* between these locations - for driving, public transport and active travel.
4. The *willingness to travel* (travel behaviour).

Origin of Trips

3.23. To identify the potential '*origin of trips*', the Connectivity Metric divides all of England and Wales into a 100m² grid areas, and for each identifies a main origin point ('population-weighted centroid') identified using Ordnance Survey (OS) Address Base data and Office for National Statistics (ONS) data.

Destination of Trips

3.24. To identify the potential '*destination of trips*', the Connectivity Metric considers the location of key employment, services and social engagements. This includes:

- a. Education - primary and secondary schools, further education (ages 16-18), special needs schools, and private education. The key data source is the Department for Education official records.
- b. Leisure and community - pub/bar/nightclubs, sports facilities, cultural facilities, recycling centres, post offices/post boxes, cinemas/theatres, halls/social clubs, job centres, places of worship, libraries, banks /financial services, and green spaces. The key data sources are OS Address Base, OS Greenspaces, and OpenStreetMap data repositories.
- c. Healthcare - pharmacies, general practices, opticians, dentists, hospitals, private healthcare, and emergency departments. The key data source is NHS England.
- d. Shopping - petrol stations, restaurants/takeaways, general retail shops, supermarkets, and convenience stores. The key data source is the OS Address Base supplemented by OpenStreetMap data.
- e. Employment – based on an assessment of the number of jobs for each 100m² area, with each individual job counting towards its 'employment value'. The key data source is the ONS Business Register and Employment Survey data.
- f. Social visits - Each residential building is taken as a separate destination, with the number of people to visit in each estimated by dividing all those living in the Output Area (a small-scale assessment unit used when analysis Census data) by the total dwellings in that Output Area. The key data source is the OS Address Base.

Transport Infrastructure Network

- 3.25. To determine the *transport infrastructure network* between these locations the Connectivity Metric creates a network of the routes available for each of the following modes of transportation:
- a. Driving – including private car, taxi, van / lorry, minicab, motorcycle / scooter / moped, and other private transport.
 - b. Public transport – including buses, trains, trams, light rail, ferries, and underground services.
 - c. Active travel – including walking and cycling.
- 3.26. Travel times are determined using network provider data, informed by calculations at various times of the day - dependent on the mode of transport⁴, and adjusted to reflect such factors as congestion and topography. The key dataset for driving is the OS MasterMap network data; for walking and cycling it is OpenStreetMap data; and for public transport it is timetables data by Basemap (with the NaPTAN dataset used for quality assurance).
- 3.27. For the avoidance of doubt, when calculating public transport travel times the Connectivity Metric includes allowances for:
- a. Walking from the origin to the first public transport link and walking from the final public transport link to the destination.
 - b. Where travel requires multiple public transport connections, allowances for any walking between them and if relevant waiting times.

Willingness to Travel

- 3.28. To determine willingness to travel, the Connectivity Metric analyses data from the National Travel Survey (2011-2020) for trips to each of the identified key employment, services and social engagement location types.
- 3.29. The Connectivity Metric includes a maximum reasonable travel time of 1 hour and 'weighting' so longer travel times contribute less to overall connectivity – the specific 'weighting' is responsive to consideration of such factors as type of destination, mode of transport, and time of day.
- 3.30. Furthermore, the Connectivity Metric also includes 'weighting' responsive to the principle of diminishing returns, meaning where multiple equivalent facilities are accessible, those that involve longer travel times

⁴For driving, calculations are undertaken at morning rush hour (7am-10am), midday (10am-4pm), evening rush hour (4pm-7pm) and night (7pm-7am). For public transport, calculations are undertaken at 10-minute intervals between 6am and 10pm. For active travel a calculation at 8am is undertaken as representative for the whole day.

contribute less to overall connectivity – the specific ‘weighting’ is responsive to such factors as the type of destination.

Overall Connectivity Score

- 3.31. Using the potential destinations, transport infrastructure network, and willingness to travel data, the Connectivity Metric generates an ‘overall connectivity score’ from 0 to 100. This score is *“calculated as a percentage of the most connected location in the country”*.
- 3.32. This ‘overall connectivity score’ is based on all the potential destinations within the Connectivity Metric via public transport and active travel, reflecting the planning principle of promoting travel via most sustainable modes of transport.
- 3.33. The contribution to the ‘overall connectivity score’ of each potential destination via each mode of transport is calculated using ‘weighted averages’ determined by the *“number of trips as reported in the National Travel Survey for each combination of purpose, mode and time of day.”*
- 3.34. In summary, the ‘overall connectivity score’ calculation by mode of transport is based on approximately: 52% public transport, 40% walking, and 8% cycling.
- 3.35. The ‘overall connectivity score’ allows an understanding of the connectedness of existing places - how easily the occupants can access the places they need to go.

Connectivity of Specific Locations

- 3.36. The Connectivity Tool allows Local Planning Authorities to identify the ‘overall connectivity score’ for any individual origin grid area in England and Wales resulting from the application of the Connectivity Metric.
- 3.37. However, the Connectivity Tool also allows the ‘overall connectivity score’ for specific locations, such as communities, to be analysed. This analysis provides the specific locations:
 - a. Maximum ‘overall connectivity score’, this being the highest-scoring origin grid square within the ‘specific location’.
 - b. Average ‘overall connectivity score’, this being the average of the origin grid squares in the ‘specific location’.
 - c. Lowest ‘overall connectivity score’, this being the lowest-scoring origin grid square in the ‘specific location’.
- 3.38. User guidance provided by the Department for Transport cautions that the connectivity of larger ‘specific locations’ can vary significantly and as such the average connectivity score is not necessarily representative of its overall connectivity. Furthermore, when defining ‘specific locations’ for

assessment within the Connectivity Tool, the number and characteristics of our communities (including that many have a dispersed community pattern) also means that both the average and minimum connectivity score may not necessarily be representative.

- 3.39. Conversely, the maximum connectivity score of a 'specific location' is considered to provide a clear and consistent indication of the highest connectivity score within a 'specific location', therefore allowing for direct comparison of the maximum connectivity of our communities.
- 3.40. Therefore, Shropshire Council concluded that the **maximum 'overall connectivity score' for a community** is the most appropriate indicator for consideration when defining a 'community hierarchy'.

Connectivity a Local Context

- 3.41. Recognising that connectivity varies across the country and to provide local context, the Connectivity Tool identifies 'overall connectivity score banding' by Local Authority administrative area. Shropshire Council considers this Local Authority 'overall connectivity score' banding provides valuable context when analysing the maximum 'overall connectivity score' for a community in the context of a 'community hierarchy' for Shropshire.
- 3.42. The 'overall connectivity score' banding in Shropshire Council's administrative area is as follows:

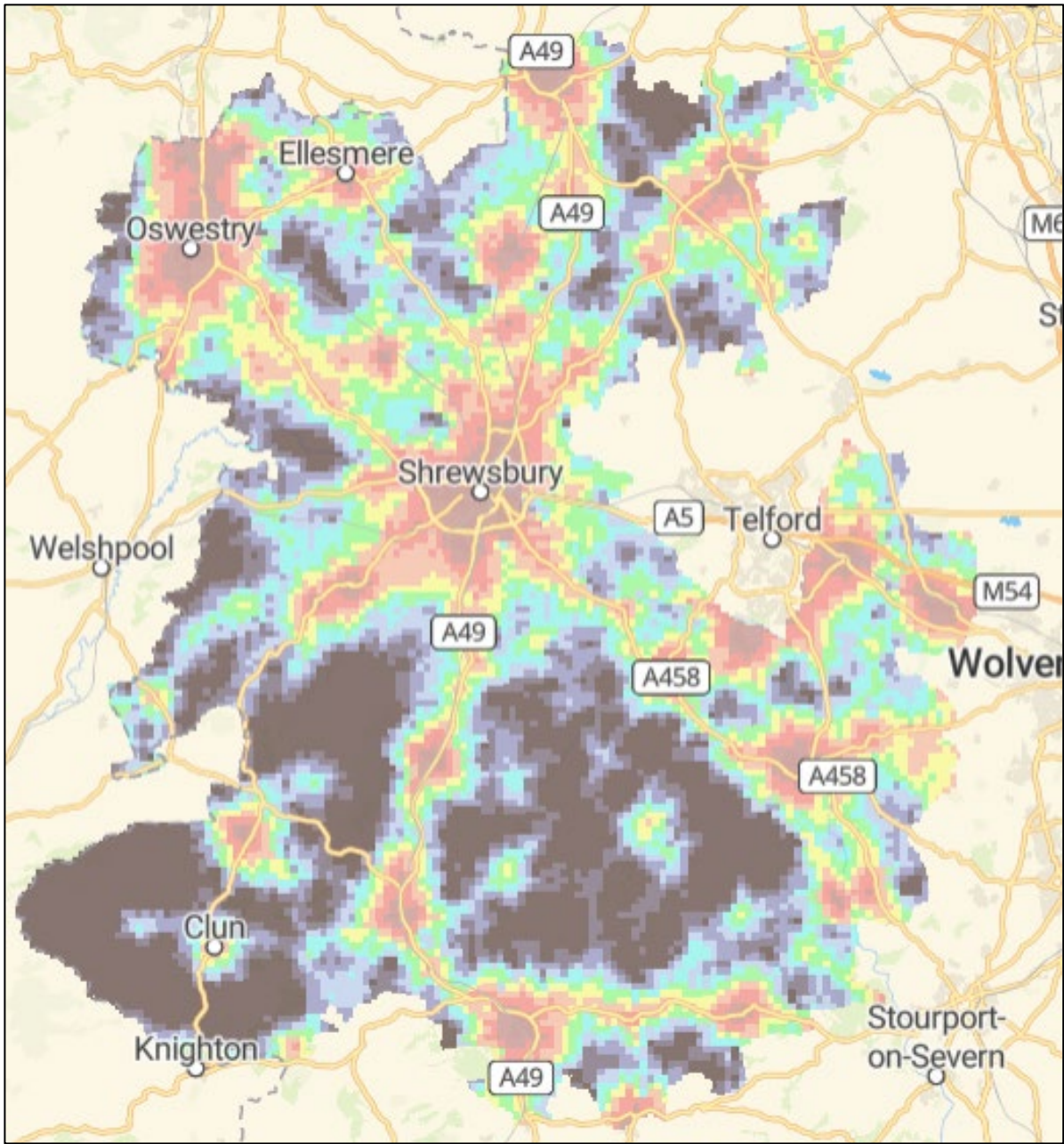
Figure 2: Connectivity Bands in Shropshire

Band	Connectivity Score Range:
A	29-79
B	21-28
C	17-20
D	14-16
E	11-13
F	9-10
G	7-8
H	5-6
I	4
J	1-3

- 3.43. Notably, the bands do not include a consistent 'range' of scores, reflecting the prevalence of lower scoring areas due to the rurality of Shropshire.

3.44. This banding is illustrated graphically on the below map:

Figure 3: Map Illustrating Connectivity Bands in Shropshire⁵



⁵ Department for Transport, (2025), Connectivity Tool, ©MapTiler and ©OpenStreetMap
Shropshire Community Hierarchy

Stage 3: Categorisation of Communities

- 3.45. The third stage of assessment involves the categorisation of communities. This categorisation is based on the outputs of Stage 2 of the assessment for each of the communities identified through Stage 1 of the assessment.
- 3.46. Specifically, in combination community size and community connectivity will inform the categorisation of recognised named communities to form the 'community hierarchy' for Shropshire. The intention is that this categorisation is responsive to the 'similarities' and 'differences' of our communities, based on their size and connectivity.

Community Categories

- 3.47. Having considered the characteristics of Shropshire and our communities, Shropshire Council has concluded that community categories appropriate for inclusion within the 'community hierarchy' are:

Figure 4: 'Community Hierarchy' Categories

Strategic Centre	<ul style="list-style-type: none"> • Largest urban community in terms of resident population and dwellings. • Highest levels of connectivity to employment, services and social engagements.
Principal Centre	<ul style="list-style-type: none"> • Larger urban communities in terms of resident population and dwellings. • Higher levels of connectivity to employment, services and social engagements.
Key Centre	<ul style="list-style-type: none"> • Smaller urban communities in terms of resident population and dwellings. • High levels of connectivity to employment, services and social engagements.
Primary Connected Village	<ul style="list-style-type: none"> • Larger rural communities in terms of resident population and dwellings. • Moderate levels of connectivity to employment, services and social engagements.
Secondary Connected Village	<ul style="list-style-type: none"> • Moderate rural communities in terms of resident population and dwellings. • Moderate levels of connectivity to employment, services and social engagements.
Tertiary Connected Village	<ul style="list-style-type: none"> • Smaller rural communities in terms of resident population and dwellings. • Moderate levels of connectivity to employment, services and social engagements.
Other Communities	<ul style="list-style-type: none"> • Smallest rural communities in terms of resident population and dwellings. • Lower levels of connectivity to employment, services and social engagements.

Community Category Thresholds

- 3.48. The identification of the 'thresholds' for each of the community categories inevitably involves application of planning judgement.
- 3.49. This planning judgement is informed by consideration of the characteristics of Shropshire and our diverse communities, the resident population and household characteristics of our communities, the maximum 'overall connectivity scores' of our communities, and the 'overall connectivity score banding' for Shropshire.
- 3.50. Through application of professional judgement, Shropshire Council has determined appropriate 'thresholds' for the community categories included within our 'community hierarchy'.
- 3.51. These 'thresholds' involve two gateways, with a community only included within a community category where it passes both of these gateways.
- 3.52. The first gateway is based on community resident population and dwellings. Within this gateway:
- a. The minimum requirement for urban communities is a **1,500 resident population and 750 dwellings**, which having reflected on the characteristics of our communities is considered an appropriate distinction between urban and rural communities in a Shropshire context.
 - b. The minimum requirement for connected villages is a **150 resident population and 75 dwellings**, which having reflected on the characteristics of our communities is considered an appropriate distinction between the more sizeable rural communities and smaller rural communities in a Shropshire context.
- 3.53. The second gateway is based on the maximum 'overall connectivity score' of the community. Within this gateway:
- a. The minimum requirement for urban communities aligns with the minimum 'overall connectivity score' to be categorised as **Band A** in the 'overall connectivity score banding' by Local Authority administrative area.
 - b. The minimum requirement for connected villages aligns with the minimum 'overall connectivity score' to be categorised as **Band F** in the 'overall connectivity score banding' by Local Authority administrative area.

3.54. The 'threshold gateways' for the community categories of the Shropshire 'community hierarchy' are:

Figure 5: Community Category Threshold Gateways

Community Category	Gateway One			Gateway Two
	Population		Dwellings	Maximum Connectivity Score
Strategic Centre	50,000 or more	&	25,000 or more	75 or more (Band A)
Principal Centre	8,000 or more	&	4,000 or more	60 or more (Band A)
Key Centre	1,500 or more	&	750 or more	29 or more (Band A)
Primary Connected Village	700 or more	&	350 or more	21 or more (Band B or higher)
Secondary Connected Village	300 or more	&	150 or more	14 or more (Band D or higher)
Tertiary Connected Village	150 or more	&	75 or more	9 or more (Band F or higher)
Other Communities	149 or less	&	74 or fewer	8 or less (Band G or lower)

4. Assessment

Stage 1: Identification of Communities

- 4.1. Stage 1 of the assessment involved identification of the 'recognisable named communities' in Shropshire which are to be included within the 'community hierarchy'.
- 4.2. Using the methodology outlined for this stage of assessment within this document, around 550 recognised names communities were identified.
- 4.3. These communities and the main parish and place plan area within which they are located are detailed in Figure 6 (communities are organised alphabetically – grouped by place plan area).

Figure 6: 'Recognised Named Communities' Identified in Shropshire

Community	Main Parish ⁶	Place Plan Area
Albrighton	Albrighton & Donington	Albrighton
Beckbury	Beckbury	Albrighton
Boningale	Boningale	Albrighton
Cosford (including RAF Cosford)	Albrighton & Donington	Albrighton
Grindle	Ryton	Albrighton
Ryton (near Beckbury)	Ryton	Albrighton
Tong	Tong	Albrighton
Asterton	Myndtown	Bishop's Castle
Aston Pigott	Worthen With Shelve	Bishop's Castle
Aston Rogers	Worthen With Shelve	Bishop's Castle
Basford & Edgton	Edgton	Bishop's Castle
Beckjay	Clungunford	Bishop's Castle
Bedstone	Bedstone	Bishop's Castle
Bentlawnt	Worthen With Shelve	Bishop's Castle
Binweston	Worthen With Shelve	Bishop's Castle
Bishop's Castle	Bishop's Castle	Bishop's Castle
Brockton (Lydbury North)	Lydbury North	Bishop's Castle
Bromlow	Worthen With Shelve	Bishop's Castle
Brompton	Chirbury With Brompton	Bishop's Castle
Bryn	Clun	Bishop's Castle
Bucknell	Bucknell	Bishop's Castle
Cefn Einion	Mainstone	Bishop's Castle
Chapel Lawn	Clun	Bishop's Castle
Chirbury	Chirbury With Brompton	Bishop's Castle
Clun	Clun	Bishop's Castle
Clunbury	Clunbury	Bishop's Castle
Clungunford & Abcott	Clungunford	Bishop's Castle
Clunton	Clunbury	Bishop's Castle
Colebatch	Colebatch	Bishop's Castle
Crowsnest	Worthen With Shelve	Bishop's Castle
Eyton (Lydbury North)	Lydbury North	Bishop's Castle

⁶Please note: Some communities are located in multiple parishes, only that considered to contain the majority of the built form is identified.

Community	Main Parish⁶	Place Plan Area
Gravels, Gravels Bank & Hemford	Worthen With Shelve	Bishop's Castle
Hope	Worthen With Shelve	Bishop's Castle
Hopesgate	Worthen With Shelve	Bishop's Castle
Hopton Castle	Hopton Castle	Bishop's Castle
Hopton Heath	Clungunford	Bishop's Castle
Kempton	Clunbury	Bishop's Castle
Lea	Lydham	Bishop's Castle
Little Brampton	Clunbury	Bishop's Castle
Llanfair Waterdine	Llanfair Waterdine	Bishop's Castle
Lydbury North	Lydbury North	Bishop's Castle
Lydham	Lydham	Bishop's Castle
Mainstone	Mainstone	Bishop's Castle
Marion	Chirbury With Brompton	Bishop's Castle
Meadowtown	Worthen With Shelve	Bishop's Castle
More	More	Bishop's Castle
Newcastle On Clun	Newcastle-On-Clun	Bishop's Castle
Norbury	Norbury	Bishop's Castle
Obley	Clunbury	Bishop's Castle
Pennerley, Tankerville & The Bog	Worthen With Shelve	Bishop's Castle
Pentirvin	Worthen With Shelve	Bishop's Castle
Pentre (Clun)	Clun	Bishop's Castle
Pentreheyling	Chirbury With Brompton	Bishop's Castle
Priest Weston	Chirbury With Brompton	Bishop's Castle
Purslow	Clunbury	Bishop's Castle
Ratlinghope	Ratlinghope	Bishop's Castle
Rorrington	Chirbury With Brompton	Bishop's Castle
Rowley	Worthen With Shelve	Bishop's Castle
Shelderton	Clungunford	Bishop's Castle
Shelve	Worthen With Shelve	Bishop's Castle
Snailbeach	Worthen With Shelve	Bishop's Castle
Stiperstones & Perkins Beach	Worthen With Shelve	Bishop's Castle
Stowe	Stowe	Bishop's Castle
Twitchen	Clunbury	Bishop's Castle
Walcot	Withington	Bishop's Castle
Walkmill	Norbury	Bishop's Castle
Wentnor	Wentnor	Bishop's Castle
Weston (Stowe)	Stowe	Bishop's Castle
Whitcot	Norbury	Bishop's Castle
Whitcot Keysett	Newcastle-On-Clun	Bishop's Castle
Worthen & Brockton	Worthen With Shelve	Bishop's Castle
Wotherton	Chirbury With Brompton	Bishop's Castle
Ackleton	Worfield	Bridgnorth
Acton Round	Acton Round	Bridgnorth
Alveley	Alveley & Romsley	Bridgnorth
Astley Abbots	Astley Abbots	Bridgnorth
Aston Botterell	Aston Botterell	Bridgnorth
Aston Eyre	Aston Eyre	Bridgnorth
Badger	Badger	Bridgnorth
Billingsley	Billingsley	Bridgnorth
Bridgnorth	Bridgnorth	Bridgnorth
Broad Oak & Six Ashes	Alveley & Romsley	Bridgnorth

Community	Main Parish⁶	Place Plan Area
Brockton (Sutton Maddock)	Sutton Maddock	Bridgnorth
Burwarton	Burwarton	Bridgnorth
Chesterton	Worfield	Bridgnorth
Chetton	Chetton	Bridgnorth
Claverley	Claverley	Bridgnorth
Cleobury North	Cleobury North	Bridgnorth
Colemore Green	Astley Abbots	Bridgnorth
Cross Lane Head	Astley Abbots	Bridgnorth
Deuxhill	Deuxhill	Bridgnorth
Ditton Priors	Ditton Priors	Bridgnorth
Eardington	Eardington	Bridgnorth
Fenn Green	Alveley & Romsley	Bridgnorth
Glazeley	Glazeley	Bridgnorth
Hampton Loade	Chelmarsh	Bridgnorth
Heathton & Draycott	Claverley	Bridgnorth
Hilton	Worfield	Bridgnorth
Middleton Priors	Ditton Priors	Bridgnorth
Middleton Scriven	Middleton Scriven	Bridgnorth
Monkhopton	Monkhopton	Bridgnorth
Morville	Morville	Bridgnorth
Muckley	Acton Round	Bridgnorth
Muckley Cross	Acton Round	Bridgnorth
Neenton	Neenton	Bridgnorth
Netchwood Common	Ditton Priors	Bridgnorth
Nordley	Astley Abbots	Bridgnorth
Nordley Common	Astley Abbots	Bridgnorth
Norton	Stockton	Bridgnorth
Oldbury	Bridgnorth	Bridgnorth
Quatford	Bridgnorth	Bridgnorth
Quatt	Quatt Malvern	Bridgnorth
Romsley	Romsley	Bridgnorth
Roughton	Worfield	Bridgnorth
Rudge	Rudge	Bridgnorth
Rudge Heath	Claverley	Bridgnorth
Shipley	Claverley	Bridgnorth
Sidbury	Sidbury	Bridgnorth
Stableford	Worfield	Bridgnorth
Stanmore	Worfield	Bridgnorth
Stockton	Stockton	Bridgnorth
Sutton Maddock	Sutton Maddock	Bridgnorth
The Down	Chetton	Bridgnorth
The Hobbins	Worfield	Bridgnorth
Tuckhill	Alveley and Romsley	Bridgnorth
Upton Cressett	Upton Cressett	Bridgnorth
Weston Heath (near Sheriffhales)	Sheriffhales	Bridgnorth
Wooton	Quatt Malvern	Bridgnorth
Worfield	Worfield	Bridgnorth
Barrow	Barrow	Broseley
Broseley	Broseley	Broseley
Posenhall	Barrow	Broseley
The Smithies	Barrow	Broseley

Community	Main Parish⁶	Place Plan Area
Acton Burnell	Acton Burnell	Church Stretton
Acton Scott	Acton Scott	Church Stretton
All Stretton	Church Stretton	Church Stretton
Cardington	Cardington	Church Stretton
Church Stretton	Church Stretton	Church Stretton
East Wall	Rushbury	Church Stretton
Enchmarsh	Cardington	Church Stretton
Frodesley	Frodesley	Church Stretton
Hatton	Eaton-Under-Heywood	Church Stretton
Heath Common	Rushbury	Church Stretton
Hope Bowdler	Hope Bowdler	Church Stretton
Leebotwood	Leebotwood	Church Stretton
Little Stretton	Church Stretton	Church Stretton
Longnor	Longnor	Church Stretton
Longville In The Dale	Rushbury	Church Stretton
Minton	Church Stretton	Church Stretton
Picklescott	Smethcott	Church Stretton
Pitchford	Pitchford	Church Stretton
Plaish	Cardington	Church Stretton
Rushbury & Roman Bank	Rushbury	Church Stretton
Soudley	Eaton-Under-Heywood	Church Stretton
Ticklerton	Eaton-Under-Heywood	Church Stretton
Wall Under Heywood	Rushbury	Church Stretton
Wallbank	Rushbury	Church Stretton
Woolstaston	Woolstaston	Church Stretton
Besom Woods & Wheathill	Wheathill	Cleobury Mortimer
Boraston	Boraston	Cleobury Mortimer
Bromdon	Wheathill	Cleobury Mortimer
Button Bridge	Kinlet	Cleobury Mortimer
Button Oak	Kinlet	Cleobury Mortimer
Catherton Common	Hopton Wafers	Cleobury Mortimer
Chorley	Stottesdon	Cleobury Mortimer
Cleobury Mortimer	Cleobury Mortimer	Cleobury Mortimer
Coppice Gate	Kinlet	Cleobury Mortimer
Coreley	Coreley	Cleobury Mortimer
Doddington	Hopton Wafers	Cleobury Mortimer
Farlow	Farlow	Cleobury Mortimer
Hints	Coreley	Cleobury Mortimer
Hopton Bank	Hopton Wafers	Cleobury Mortimer
Hopton Wafers	Hopton Wafers	Cleobury Mortimer
Kinlet	Kinlet	Cleobury Mortimer
Loughton	Wheathill	Cleobury Mortimer
Milson	Milson	Cleobury Mortimer
Nash	Nash	Cleobury Mortimer
Neen Savage	Neen Savage	Cleobury Mortimer
Neen Sollars	Neen Sollars	Cleobury Mortimer
Oreton	Farlow	Cleobury Mortimer
Silvington	Wheathill	Cleobury Mortimer
Spurtree	Boraston	Cleobury Mortimer
Stottesdon	Stottesdon	Cleobury Mortimer

Community	Main Parish⁶	Place Plan Area
Abdon	Abdon & Heath	Craven Arms
Aldon	Craven Arms	Craven Arms
Aston Munslow	Munslow	Craven Arms
Aston-On-Clun	Hopesay	Craven Arms
Beambridge & Aston Mill	Clunbury	Craven Arms
Bouldon	Diddlebury	Craven Arms
Brandhill	Onibury	Craven Arms
Broome	Hopesay	Craven Arms
Bushmoor & Leamoore Common	Wistanstow	Craven Arms
Cheney Longville	Wistanstow	Craven Arms
Clee St Margaret	Clee St. Margaret	Craven Arms
Cleedownton	Stoke St. Milborough	Craven Arms
Cleestanton	Stoke St. Milborough	Craven Arms
Cockshutford	Clee St. Margaret	Craven Arms
Corfton & Corfton Bache	Diddlebury	Craven Arms
Craven Arms	Craven Arms	Craven Arms
Culmington	Culmington	Craven Arms
Diddlebury	Diddlebury	Craven Arms
Felhampton	Wistanstow	Craven Arms
Great & Little Sutton	Diddlebury	Craven Arms
Heath	Abdon & Heath	Craven Arms
Holdgate	Abdon & Heath	Craven Arms
Hopesay	Hopesay	Craven Arms
Hopton Cangeford	Hopton Cangeford	Craven Arms
Hordeley	Wistanstow	Craven Arms
Hungerford & Broadstone	Munslow	Craven Arms
Long Meadow End	Hopesay	Craven Arms
Marshbrook	Wistanstow	Craven Arms
Middlehope	Diddlebury	Craven Arms
Munslow	Munslow	Craven Arms
Peaton	Diddlebury	Craven Arms
Peatonstrand	Diddlebury	Craven Arms
Rowton (Craven Arms)	Craven Arms	Craven Arms
Seifton	Culmington	Craven Arms
Seifton Bache	Culmington	Craven Arms
Sibdon Carwood	Sibdon Carwood	Craven Arms
Stanton Lacy	Stanton Lacy	Craven Arms
Stoke St Milborough	Stoke St. Milborough	Craven Arms
Stokesay	Craven Arms	Craven Arms
Strefford	Wistanstow	Craven Arms
Stretford Bridge	Wistanstow	Craven Arms
The Hope	Stanton Lacy	Craven Arms
Tugford	Abdon & Heath	Craven Arms
Upper and Lower Hayton & Haytons Bent	Stanton Lacy	Craven Arms
Upper Affcot	Wistanstow	Craven Arms
Vernolds Common	Culmington	Craven Arms
Westhope	Diddlebury	Craven Arms
Whittingslow	Wistanstow	Craven Arms
Wistanstow	Wistanstow	Craven Arms
Woolston (Wistanstow Parish)	Wistanstow	Craven Arms

Community	Main Parish⁶	Place Plan Area
Bagley	Hordley	Ellesmere
Breadon Heath	Welshampton And Lyneal	Ellesmere
Cockshutt	Cockshutt	Ellesmere
Colemere	Welshampton And Lyneal	Ellesmere
Dudleston	Ellesmere Rural	Ellesmere
Dudleston Heath	Ellesmere Rural	Ellesmere
Ellesmere	Ellesmere Urban	Ellesmere
Elsion	Ellesmere Rural	Ellesmere
English Frankton	Cockshutt	Ellesmere
Hordley	Hordley	Ellesmere
Lee	Ellesmere Rural	Ellesmere
Lower Frankton	Whittington	Ellesmere
Lower Hordley & Bagley Marsh	Hordley	Ellesmere
Lyneal	Welshampton And Lyneal	Ellesmere
New Marton	Ellesmere Rural	Ellesmere
Perthy & Welsh Frankton	Ellesmere Rural	Ellesmere
Petton	Petton	Ellesmere
Street Dinas	St. Martin's	Ellesmere
Tetchill	Ellesmere Rural	Ellesmere
Welshampton	Welshampton And Lyneal	Ellesmere
Chelmarsh	Chelmarsh	Highley
Highley	Highley	Highley
Sutton	Chelmarsh	Highley
Angel Bank & Farden	Bitterley	Ludlow
Ashford Bowdler	Ashford Bowdler	Ludlow
Ashford Carbonell	Ashford Carbonel	Ludlow
Batchcott & Richards Castle	Richard's Castle	Ludlow
Bedlam	Bitterley	Ludlow
Bitterley	Bitterley	Ludlow
Bromfield	Bromfield	Ludlow
Burford	Burford	Ludlow
Caynham	Caynham	Ludlow
Clee Hill	Caynham	Ludlow
Cleeton St Mary	Bitterley	Ludlow
Dhustone	Caynham	Ludlow
Duxmoor & Whittytree	Onibury	Ludlow
Greete	Greete	Ludlow
Hope Bagot	Hope Bagot	Ludlow
Knowbury	Caynham	Ludlow
Ludlow	Ludlow	Ludlow
Middleton	Bitterley	Ludlow
Onibury	Onibury	Ludlow
Overton	Richard's Castle	Ludlow
Priors Halton	Bromfield	Ludlow
Snitton	Bitterley	Ludlow
The Sheet	Ludford	Ludlow
Walton (Onibury)	Onibury	Ludlow
Whitton	Whitton	Ludlow
Woofferton	Richard's Castle	Ludlow
Adderley	Adderley	Market Drayton
Allfordgreen	Child's Ercall	Market Drayton

Community	Main Parish⁶	Place Plan Area
Bletchley	Moreton Say	Market Drayton
Cheswardine	Cheswardine	Market Drayton
Child's Ercall	Child's Ercall	Market Drayton
Chipnall	Cheswardine	Market Drayton
Crickmery & Wistanswick	Stoke Upon Tern	Market Drayton
Eaton Upon Tern	Stoke Upon Tern	Market Drayton
Hinstock	Hinstock	Market Drayton
Hodnet	Hodnet	Market Drayton
Howle	Child's Ercall	Market Drayton
Lockleywood	Hinstock	Market Drayton
Longford	Moreton Say	Market Drayton
Longslow	Moreton Say	Market Drayton
Marchamley	Hodnet	Market Drayton
Market Drayton	Market Drayton	Market Drayton
Mill Green	Hinstock	Market Drayton
Moreton Say	Moreton Say	Market Drayton
Norton In Hales	Norton In Hales	Market Drayton
Ollerton	Stoke Upon Tern	Market Drayton
Peplow	Hodnet	Market Drayton
Rosehill	Sutton Upon Tern	Market Drayton
Soudley (Great)	Cheswardine	Market Drayton
Stoke Heath	Stoke Upon Tern	Market Drayton
Stoke Upon Tern	Stoke Upon Tern	Market Drayton
Ternhill	Sutton Upon Tern	Market Drayton
Wollerton	Hodnet	Market Drayton
Woodseaves	Sutton Upon Tern	Market Drayton
Woore, Ireland's Cross & Pipe Gate	Woore	Market Drayton
Arscott	Pontesbury	Minsterley & Pontesbury
Asterley	Pontesbury	Minsterley & Pontesbury
Cruckmeole	Pontesbury	Minsterley & Pontesbury
Cruckton	Pontesbury	Minsterley & Pontesbury
Edge	Pontesbury	Minsterley & Pontesbury
Habberley	Pontesbury	Minsterley & Pontesbury
Hinton	Pontesbury	Minsterley & Pontesbury
Horsebridge	Minsterley	Minsterley & Pontesbury
Lea Cross	Pontesbury	Minsterley & Pontesbury
Minsterley	Minsterley	Minsterley & Pontesbury
Plealey	Pontesbury	Minsterley & Pontesbury
Plealey Road & Halston	Pontesbury	Minsterley & Pontesbury
Ploxgreen	Minsterley	Minsterley & Pontesbury
Pontesbury	Pontesbury	Minsterley & Pontesbury
Pontesbury Hill	Pontesbury	Minsterley & Pontesbury
Pontesford	Pontesbury	Minsterley & Pontesbury
Shorthill	Pontesbury	Minsterley & Pontesbury
Bourton	Much Wenlock	Much Wenlock
Bourton Westwood	Much Wenlock	Much Wenlock
Brockton (Stanton Long)	Stanton Long	Much Wenlock
Buildwas	Buildwas	Much Wenlock
Callaughton	Much Wenlock	Much Wenlock
Church Preen	Church Preen	Much Wenlock

Community	Main Parish⁶	Place Plan Area
Cressage	Cressage	Much Wenlock
Easthope	Easthope	Much Wenlock
Farley	Much Wenlock	Much Wenlock
Gleedon Hill	Much Wenlock	Much Wenlock
Harley	Harley	Much Wenlock
Homer	Much Wenlock	Much Wenlock
Hughley	Hughley	Much Wenlock
Kenley	Kenley	Much Wenlock
Much Wenlock	Much Wenlock	Much Wenlock
Sheinton	Sheinton	Much Wenlock
Shipton	Shipton	Much Wenlock
Stanton Long	Stanton Long	Much Wenlock
Stretton Westwood	Much Wenlock	Much Wenlock
Babbinswood	Whittington	Oswestry
Bronygarth & Castle Mill	Weston Rhyn	Oswestry
Cefn Blodwel	Llanyblodwel	Oswestry
Chirk Bank	Weston Rhyn	Oswestry
Coed-Y-Go	Oswestry Rural	Oswestry
Crickheath	Oswestry Rural	Oswestry
Croesaubach	Oswestry Rural	Oswestry
Eardiston	Ruyton XI Towns	Oswestry
Edgerley	Kinnerley	Oswestry
Glynmorlas & Rhyn	St. Martin's	Oswestry
Gobowen	Selattyn & Gobowen	Oswestry
Grimpo	West Felton	Oswestry
Haughton (West Felton)	West Felton	Oswestry
Hindford	Whittington	Oswestry
Kinnerley	Kinnerley	Oswestry
Knockin	Knockin	Oswestry
Knockin Heath, Dovaston & Dovaston Bank	Kinnerley	Oswestry
Llanyblodwel	Llanyblodwel	Oswestry
Llanymynech	Llanymynech & Pant	Oswestry
Llyncllys	Llanyblodwel	Oswestry
Maesbrook & Maesbrook Green	Kinnerley	Oswestry
Maesbury	Oswestry Rural	Oswestry
Maesbury Marsh	Oswestry Rural	Oswestry
Middle & Lower Hengoed	Selattyn & Gobowen	Oswestry
Middleton & Aston Square	Oswestry Rural	Oswestry
Morton & Morton Common	Oswestry Rural	Oswestry
Nantmawr	Oswestry Rural	Oswestry
Oswestry	Oswestry	Oswestry
Pant	Llanymynech & Pant	Oswestry
Pant Glas	Selattyn & Gobowen	Oswestry
Park Hall	Whittington	Oswestry
Pentre (Wilcot)	Kinnerley	Oswestry
Pont Faen	Weston Rhyn	Oswestry
Porthywaen	Llanyblodwel	Oswestry
Queens Head	West Felton	Oswestry
Rednal	West Felton	Oswestry
Rhoswel	Weston Rhyn	Oswestry

Community	Main Parish⁶	Place Plan Area
Rhyd-y-Croesau	Oswestry Rural	Oswestry
Ruyton XI Towns	Ruyton XI Towns	Oswestry
Selattyn	Selattyn & Gobowen	Oswestry
St Martins	St. Martin's	Oswestry
St Martins Moor	St. Martin's	Oswestry
Sweeney Mountain & Nant-Y-Caws	Oswestry Rural	Oswestry
The Wern	Weston Rhyn	Oswestry
Treflach	Oswestry Rural	Oswestry
Trefonen	Oswestry Rural	Oswestry
Upper Hengoed	Selattyn & Gobowen	Oswestry
Weirbrook	Ruyton XI Towns	Oswestry
Wern Ddu	Oswestry Rural	Oswestry
West Felton	West Felton	Oswestry
Weston Rhyn & Preesgweene	Weston Rhyn	Oswestry
Whittington	Whittington	Oswestry
Woolston Bank	Oswestry Rural	Oswestry
Wykey	Ruyton XI Towns	Oswestry
Crackley Bank	Sheriffhales	Shifnal
Heath Hill	Sheriffhales	Shifnal
Kemberton	Kemberton	Shifnal
Lilyhurst	Sheriffhales	Shifnal
Sheriffhales	Sheriffhales	Shifnal
Shifnal	Shifnal	Shifnal
Tong Norton	Tong	Shifnal
Weston (Monkhopton)	Monkhopton	Shifnal
Alberbury	Alberbury With Cardeston	Shrewsbury
Albrighton (Pimhill)	Bomere Heath & District	Shrewsbury
Annscroft	Longden	Shrewsbury
Astley	Astley	Shrewsbury
Atcham	Atcham	Shrewsbury
Baschurch	Baschurch	Shrewsbury
Bayston Hill	Bayston Hill	Shrewsbury
Berrington	Berrington	Shrewsbury
Berwick	Bomere Heath & District	Shrewsbury
Bicton	Bicton	Shrewsbury
Bings Heath	Astley	Shrewsbury
Bomere Heath	Bomere Heath & District	Shrewsbury
Cardeston	Alberbury With Cardeston	Shrewsbury
Castle Pulverbatch	Church Pulverbatch	Shrewsbury
Chavel	Ford	Shrewsbury
Church Pulverbatch	Church Pulverbatch	Shrewsbury
Conover	Conover	Shrewsbury
Cound & Upper Cound	Cound	Shrewsbury
Coundmoor & Evenwood Common	Cound	Shrewsbury
Cross Houses	Berrington	Shrewsbury
Donnington & Charlton Hill	Wroxeter And Uppington	Shrewsbury
Dorrington	Conover	Shrewsbury
Eaton Constantine	Leighton & Eaton Constantine	Shrewsbury
Ensdon	Montford	Shrewsbury

Community	Main Parish⁶	Place Plan Area
Exfords Green	Longden	Shrewsbury
Eyton On Severn	Wroxeter And Uppington	Shrewsbury
Felton Butler	Great Ness	Shrewsbury
Fitz	Bomere Heath & District	Shrewsbury
Ford	Ford	Shrewsbury
Ford Heath	Westbury	Shrewsbury
Forton Heath & Mytton	Bomere Heath & District	Shrewsbury
Four Crosses, Shepherds Lane & Calcott	Bicton	Shrewsbury
Garmston	Leighton & Eaton Constantine	Shrewsbury
Grafton	Bomere Heath & District	Shrewsbury
Great Ness	Great Ness	Shrewsbury
Halfway House	Alberbury with Cardeston	Shrewsbury
Hanwood	Great Hanwood	Shrewsbury
Hanwood Bank	Great Hanwood	Shrewsbury
Haughton (Upton Magna)	Upton Magna	Shrewsbury
Hookagate	Longden	Shrewsbury
Hopton Valeswood	Great Ness	Shrewsbury
Kinton	Great Ness	Shrewsbury
Leaton	Bomere Heath & District	Shrewsbury
Leighton	Leighton & Eaton Constantine	Shrewsbury
Little Ness	Little Ness	Shrewsbury
Longden	Longden	Shrewsbury
Longden Common	Longden	Shrewsbury
Longwood	Leighton & Eaton Constantine	Shrewsbury
Lyth Bank & Lyth Hill	Longden	Shrewsbury
Melverley	Melverley	Shrewsbury
Melverley Green	Melverley	Shrewsbury
Merrington	Bomere Heath & District	Shrewsbury
Montford	Montford	Shrewsbury
Montford Bridge	Montford	Shrewsbury
Nesscliffe	Great Ness	Shrewsbury
Nox	Westbury	Shrewsbury
Preston	Upton Magna	Shrewsbury
Preston Gubbals	Bomere Heath and District	Shrewsbury
Preston Montford	Bicton	Shrewsbury
Ruckley & Langlely	Ruckley and Langlely	Shrewsbury
Rushton	Wroxeter And Uppington	Shrewsbury
Ryton (Condovery)	Condovery	Shrewsbury
Shrawardine	Montford	Shrewsbury
Shrewsbury	Shrewsbury	Shrewsbury
Stanwardine in the Fields	Baschurch	Shrewsbury
Stapleton	Condovery	Shrewsbury
Stapleton Common	Longden	Shrewsbury
Stoney Stretton	Westbury	Shrewsbury
Uffington	Uffington	Shrewsbury
Upper Astley	Astley	Shrewsbury
Uppington	Wroxeter And Uppington	Shrewsbury
Upton Magna	Upton Magna	Shrewsbury
Vennington	Westbury	Shrewsbury
Vron Gate	Westbury	Shrewsbury

Community	Main Parish⁶	Place Plan Area
Walford Heath & Oldwood	Baschurch	Shrewsbury
Wattlesborough Heath	Alberbury With Cardeston	Shrewsbury
Westbury	Westbury	Shrewsbury
Westley	Westbury	Shrewsbury
Weston Lullingfields	Baschurch	Shrewsbury
Weston Wharf & Weston Common	Baschurch	Shrewsbury
Wilcott	Great Ness	Shrewsbury
Withington	Withington	Shrewsbury
Wollaston	Alberbury With Cardeston	Shrewsbury
Wrentnall	Church Pulverbatch	Shrewsbury
Wroxeter	Wroxeter And Uppington	Shrewsbury
Yeaton	Baschurch	Shrewsbury
Yockleton	Westbury	Shrewsbury
Aston	Wem Rural	Wem
Barkers Green	Wem Rural	Wem
Brown Heath	Loppington	Wem
Burlton	Loppington	Wem
Clive	Clive	Wem
Dobsons Bridge & Roving Bridge	Whixall	Wem
Edgebolton & Moretonmill	Shawbury	Wem
Edstaston	Wem Rural	Wem
Great Wytheford	Shawbury	Wem
Grinshill	Grinshill	Wem
Hadnall	Hadnall	Wem
Harmer Hill	Myddle, Broughton & Harmer Hill	Wem
High Hatton	Stanton Upon Hine Heath	Wem
Hollinwood	Whixall	Wem
Lee Brockhurst	Moreton Corbet & Lee Brockhurst	Wem
Loppington	Loppington	Wem
Moreton Corbet	Moreton Corbet & Lee Brockhurst	Wem
Myddle	Myddle, Broughton & Harmer Hill	Wem
Newtown	Wem Rural	Wem
Noneley, Commonwood & Ruewood	Loppington	Wem
Northwood	Wem Rural	Wem
Platt Lane	Whixall	Wem
Preston Brockhurst	Moreton Corbet & Lee Brockhurst	Wem
Quina Brook	Wem Rural	Wem
Sansaw Heath	Grinshill	Wem
Shawbury	Shawbury	Wem
Stanley Green	Whixall	Wem
Stanton Upon Hine Heath	Stanton Upon Hine Heath	Wem
Tilley	Wem Rural	Wem
Waterloo	Whixall	Wem
Welshend	Whixall	Wem
Wem	Wem Urban	Wem

Community	Main Parish ⁶	Place Plan Area
Weston And Wixhill	Weston-Under-Redcastle	Wem
Weston Heath (Weston under Redcastle)	Weston-Under-Redcastle	Wem
Whixall	Whixall	Wem
Yorton	Myddle, Broughton & Harmer Hill	Wem
Ash Magna & Ash Parva	Whitchurch Rural	Whitchurch
Broughall	Whitchurch Rural	Whitchurch
Calverhall	Ightfield	Whitchurch
Darliston	Prees	Whitchurch
Fauls	Prees	Whitchurch
Grindley Brook	Whitchurch Urban	Whitchurch
Ightfield	Ightfield	Whitchurch
Prees	Prees	Whitchurch
Prees Green	Prees	Whitchurch
Prees Heath	Whitchurch Rural	Whitchurch
Prees Higher Heath	Prees	Whitchurch
Prees Lower Heath	Prees	Whitchurch
Tilstock	Whitchurch Rural	Whitchurch
Whitchurch	Whitchurch Urban	Whitchurch

Stage 2: Analysis of Communities

4.4. Stage 2 of the assessment involved the analysis of communities using *specific and consistent criteria*. As detailed within the methodology outlined in this document, this criteria is:

- a. **Community Size** – Using resident population and the number of dwellings present.
- b. **Community Connectivity: Employment, Services and Social Engagements** – Using the maximum ‘overall connectivity score’ for a community resulting from the new Department for Transport Connectivity Metric.

4.5. The results of this analysis are detailed in Figure 7:

Figure 7: Size and Connectivity of Communities in Shropshire

Key		
Population	Dwellings	Maximum Connectivity Score
50,000 or more population.	25,000 or more dwellings.	75 or more connectivity score.
8,000-49,999 population.	4,000-24,999 dwellings.	60-74 connectivity score.
1,500-7,999 population.	750-3,999 dwellings.	29-59 connectivity score.
700-1,499 population.	350-749 dwellings.	21-28 connectivity score.
300-699 population.	150-349 dwellings.	14-20 connectivity score.
150-299 population.	75-149 dwellings.	9-14 connectivity score.
149 or less population.	74 or fewer dwellings.	8 or less connectivity score.

Community	Place Plan	Size		Connectivity: Maximum Overall Score
		Population	Dwellings	
Albrighton	Albrighton	4,726	2,209	54
Beckbury	Albrighton	235	99	18
Boningale	Albrighton	53	23	38
Cosford (including RAF Cosford)	Albrighton	1,639	365	46
Grindle	Albrighton	29	16	14
Ryton (near Beckbury)	Albrighton	79	43	13
Tong	Albrighton	171	27	16
Asterton	Bishop's Castle	27	14	5
Aston Pigott	Bishop's Castle	29	16	12
Aston Rogers	Bishop's Castle	46	25	12
Basford & Edgton	Bishop's Castle	64	34	6
Beckjay	Bishop's Castle	15	8	10
Bedstone	Bishop's Castle	76	36	13
Bentlawnt	Bishop's Castle	79	38	10
Binweston	Bishop's Castle	12	6	12
Bishop's Castle	Bishop's Castle	1,567	872	47
Brockton (Lydbury North)	Bishop's Castle	47	25	15
Bromlow	Bishop's Castle	69	35	9
Brompton	Bishop's Castle	21	10	12
Bryn	Bishop's Castle	10	6	5
Bucknell	Bishop's Castle	373	202	25
Cefn Einion	Bishop's Castle	26	11	3
Chapel Lawn	Bishop's Castle	26	14	3
Chirbury	Bishop's Castle	188	97	23
Clun	Bishop's Castle	665	366	26
Clunbury	Bishop's Castle	91	46	13
Clungunford & Abcott	Bishop's Castle	187	97	11
Clunton	Bishop's Castle	120	61	8
Colebatch	Bishop's Castle	67	31	31
Crowsnest	Bishop's Castle	43	23	16
Eyton (Lydbury North)	Bishop's Castle	21	11	7
Gravels, Gravels Bank & Hemford	Bishop's Castle	100	49	9
Hope	Bishop's Castle	41	20	10
Hopesgate	Bishop's Castle	6	3	10
Hopton Castle	Bishop's Castle	51	24	8
Hopton Heath	Bishop's Castle	34	17	12
Kempton	Bishop's Castle	70	36	6
Lea	Bishop's Castle	11	5	13
Little Brampton	Bishop's Castle	12	6	11
Llanfair Waterdine	Bishop's Castle	41	23	7
Lydbury North	Bishop's Castle	208	111	20
Lydham	Bishop's Castle	101	46	18
Mainstone	Bishop's Castle	17	7	3
Marton	Bishop's Castle	103	55	15
Meadowtown	Bishop's Castle	18	10	5
More	Bishop's Castle	18	9	12
Newcastle on Clun	Bishop's Castle	157	80	11

Community	Place Plan	Size		Connectivity: Maximum Overall Score
		Population	Dwellings	
Norbury	Bishop's Castle	60	31	12
Obley	Bishop's Castle	22	11	2
Pennerley, Tankerville & The Bog	Bishop's Castle	106	54	10
Pentirvin	Bishop's Castle	20	11	9
Pentre (Clun)	Bishop's Castle	13	7	3
Pentreheyling	Bishop's Castle	23	11	9
Priest Weston	Bishop's Castle	68	36	5
Purslow	Bishop's Castle	18	9	8
Ratlinghope	Bishop's Castle	19	10	3
Rorrington	Bishop's Castle	30	16	6
Rowley	Bishop's Castle	37	18	5
Shelderton	Bishop's Castle	14	7	9
Shelve	Bishop's Castle	19	9	7
Snailbeach	Bishop's Castle	195	104	18
Stiperstones & Perkins Beach	Bishop's Castle	127	65	13
Stowe	Bishop's Castle	20	10	14
Twitchen	Bishop's Castle	48	24	10
Walcot	Bishop's Castle	4	2	19
Walkmill	Bishop's Castle	14	7	10
Wentnor	Bishop's Castle	60	31	8
Weston (Stowe)	Bishop's Castle	12	6	9
Whitcot	Bishop's Castle	17	9	11
Whitcot Keysett	Bishop's Castle	50	27	7
Worthen & Brockton	Bishop's Castle	534	270	18
Wotherton	Bishop's Castle	41	22	10
Ackleton	Bridgnorth	253	118	14
Acton Round	Bridgnorth	14	10	13
Alveley	Bridgnorth	1,433	704	36
Astley Abbots	Bridgnorth	65	31	29
Aston Botterell	Bridgnorth	25	12	5
Aston Eyre	Bridgnorth	27	19	15
Badger	Bridgnorth	85	43	14
Billingsley	Bridgnorth	189	62	11
Bridgnorth	Bridgnorth	11,996	6,206	72
Broad Oak & Six Ashes	Bridgnorth	31	17	9
Brockton (Sutton Maddock)	Bridgnorth	62	25	41
Burwarton	Bridgnorth	96	45	10
Chesterton	Bridgnorth	59	26	14
Chetton	Bridgnorth	104	31	3
Claverley	Bridgnorth	707	300	24
Cleobury North	Bridgnorth	28	13	14
Colemore Green	Bridgnorth	37	18	17
Cross Lane Head	Bridgnorth	67	32	43
Deuxhill	Bridgnorth	14	4	4
Ditton Priors	Bridgnorth	493	215	20
Eardington	Bridgnorth	391	150	34
Fenn Green	Bridgnorth	49	30	28

Community	Place Plan	Size		Connectivity: Maximum Overall Score
		Population	Dwellings	
Glazeley	Bridgnorth	58	17	7
Hampton Loade	Bridgnorth	211	106	15
Heathton & Draycott	Bridgnorth	107	49	20
Hilton	Bridgnorth	241	78	27
Middleton Priors	Bridgnorth	40	21	13
Middleton Scriven	Bridgnorth	73	21	4
Monkhoppton	Bridgnorth	121	39	6
Morville	Bridgnorth	87	38	31
Muckley	Bridgnorth	16	11	18
Muckley Cross	Bridgnorth	13	9	20
Neenton	Bridgnorth	71	34	8
Netchwood Common	Bridgnorth	36	17	8
Nordley	Bridgnorth	44	21	19
Nordley Common	Bridgnorth	72	34	17
Norton	Bridgnorth	149	71	21
Oldbury	Bridgnorth	234	108	54
Quatford	Bridgnorth	364	200	32
Quatt	Bridgnorth	67	35	19
Romsley	Bridgnorth	76	38	22
Roughton	Bridgnorth	47	23	31
Rudge	Bridgnorth	41	18	19
Rudge Heath	Bridgnorth	20	12	26
Shipley	Bridgnorth	22	13	26
Sidbury	Bridgnorth	25	11	3
Stableford	Bridgnorth	59	28	14
Stanmore	Bridgnorth	115	53	36
Stockton	Bridgnorth	10	5	16
Sutton Maddock	Bridgnorth	74	30	25
The Down	Bridgnorth	33	10	14
The Hobbins	Bridgnorth	328	149	37
Tuckhill	Bridgnorth	20	12	9
Upton Cressett	Bridgnorth	7	5	8
Weston Heath (near Sheriffhales)	Bridgnorth	47	20	12
Wooton	Bridgnorth	28	14	11
Worfield	Bridgnorth	249	120	36
Barrow	Broseley	19	8	25
Broseley	Broseley	4,981	2,341	52
Posenhall	Broseley	28	12	30
The Smithies	Broseley	19	8	10
Acton Burnell	Church Stretton	543	118	18
Acton Scott	Church Stretton	21	11	13
All Stretton	Church Stretton	286	153	42
Cardington	Church Stretton	134	57	7
Church Stretton	Church Stretton	3,408	1,929	56
East Wall	Church Stretton	39	18	8
Enchmarsh	Church Stretton	23	10	6
Frodesley	Church Stretton	88	39	13
Hatton	Church Stretton	15	7	6

Community	Place Plan	Size		Connectivity: Maximum Overall Score
		Population	Dwellings	
Heath Common	Church Stretton	2	1	11
Hope Bowdler	Church Stretton	128	58	24
Leebotwood	Church Stretton	145	65	21
Little Stretton	Church Stretton	236	129	29
Longnor	Church Stretton	206	95	28
Longville In The Dale	Church Stretton	77	36	6
Minton	Church Stretton	31	17	14
Picklescott	Church Stretton	43	20	6
Pitchford	Church Stretton	77	42	14
Plaish	Church Stretton	35	15	5
Rushbury & Roman Bank	Church Stretton	41	20	12
Soudley	Church Stretton	39	18	15
Ticklerton	Church Stretton	46	22	9
Wall Under Heywood	Church Stretton	114	55	12
Wallbank	Church Stretton	41	19	9
Woolstaston	Church Stretton	30	14	11
Besom Woods & Wheathill	Cleobury Mortimer	51	27	5
Boraston	Cleobury Mortimer	41	17	21
Bromdon	Cleobury Mortimer	56	30	5
Button Bridge	Cleobury Mortimer	55	31	18
Button Oak	Cleobury Mortimer	67	43	22
Catherton Common	Cleobury Mortimer	146	61	17
Chorley	Cleobury Mortimer	130	58	9
Cleobury Mortimer	Cleobury Mortimer	2,880	1,366	47
Coppice Gate	Cleobury Mortimer	39	21	13
Coreley	Cleobury Mortimer	35	16	7
Doddington	Cleobury Mortimer	279	143	26
Farlow	Cleobury Mortimer	12	6	14
Hints	Cleobury Mortimer	140	65	20
Hopton Bank	Cleobury Mortimer	75	32	23
Hopton Wafers	Cleobury Mortimer	86	50	21
Kinlet	Cleobury Mortimer	51	27	21
Loughton	Cleobury Mortimer	11	6	5
Milson	Cleobury Mortimer	40	19	5
Nash	Cleobury Mortimer	34	15	13
Neen Savage	Cleobury Mortimer	4	2	28
Neen Sollars	Cleobury Mortimer	69	33	9
Oreton	Cleobury Mortimer	159	78	11
Silvington	Cleobury Mortimer	24	13	4
Spurtree	Cleobury Mortimer	59	25	42
Stottesdon	Cleobury Mortimer	175	77	18
Abdon	Craven Arms	27	15	5
Aldon	Craven Arms	15	9	15
Aston Munslow	Craven Arms	98	53	17
Aston-On-Clun	Craven Arms	180	103	17
Beambridge & Aston Mill	Craven Arms	30	15	14
Bouldon	Craven Arms	26	15	5
Brandhill	Craven Arms	20	11	6
Broome	Craven Arms	101	60	17

Community	Place Plan	Size		Connectivity: Maximum Overall Score
		Population	Dwellings	
Bushmoor & Leamoor Common	Craven Arms	86	41	22
Cheney Longville	Craven Arms	38	19	25
Clee St Margaret	Craven Arms	87	44	5
Cleedownton	Craven Arms	28	12	5
Cleestanton	Craven Arms	19	8	10
Cockshutford	Craven Arms	29	15	4
Corfton & Corfton Bache	Craven Arms	101	49	14
Craven Arms	Craven Arms	2,347	1,167	52
Culmington	Craven Arms	117	60	6
Diddlebury	Craven Arms	199	90	17
Felhampton	Craven Arms	25	12	21
Great & Little Sutton	Craven Arms	19	11	4
Haytons Bent & Up Lo Hayton	Craven Arms	105	55	5
Heath	Craven Arms	13	7	5
Holdgate	Craven Arms	18	10	4
Hopesay	Craven Arms	66	33	10
Hopton Cangeford	Craven Arms	11	5	5
Horderley	Craven Arms	11	6	8
Hungerford & Broadstone	Craven Arms	54	29	5
Long Meadow End	Craven Arms	60	30	24
Marshbrook	Craven Arms	41	20	19
Middlehope	Craven Arms	13	6	3
Munslow	Craven Arms	97	52	12
Peaton	Craven Arms	21	12	7
Peatonstrand	Craven Arms	19	11	5
Rowton (Craven Arms)	Craven Arms	14	8	14
Seifton	Craven Arms	51	26	9
Seifton Bache	Craven Arms	23	12	8
Sibdon Carwood	Craven Arms	8	4	26
Stanton Lacy	Craven Arms	21	11	15
Stoke St Milborough	Craven Arms	83	35	5
Stokesay	Craven Arms	26	15	42
Strefford	Craven Arms	38	19	24
Stretford Bridge	Craven Arms	40	20	39
The Hope	Craven Arms	27	14	17
Tugford	Craven Arms	25	14	4
Upper Affcot	Craven Arms	16	8	21
Vernolds Common	Craven Arms	37	19	9
Westhope	Craven Arms	44	25	4
Whittingslow	Craven Arms	19	9	9
Wistanstow	Craven Arms	144	71	35
Woolston (Wistanstow Parish)	Craven Arms	40	19	19
Bagley	Ellesmere	55	27	9
Breadon Heath	Ellesmere	44	20	12
Cockshutt	Ellesmere	565	255	23
Colemere	Ellesmere	59	31	15

Community	Place Plan	Size		Connectivity: Maximum Overall Score
		Population	Dwellings	
Dudleston	Ellesmere	28	13	13
Dudleston Heath	Ellesmere	463	418	29
Ellesmere	Ellesmere	4,340	2,279	54
Elson	Ellesmere	89	40	40
English Frankton	Ellesmere	36	16	10
Hordley	Ellesmere	24	12	9
Lee	Ellesmere	59	19	23
Lower Frankton	Ellesmere	55	25	12
Lower Hordley & Bagley Marsh	Ellesmere	85	42	11
Lyneal	Ellesmere	137	72	10
New Marton	Ellesmere	15	7	14
Perthy & Welsh Frankton	Ellesmere	196	91	23
Petton	Ellesmere	73	34	12
Street Dinas	Ellesmere	45	21	23
Tetchill	Ellesmere	313	111	23
Welshampton	Ellesmere	240	113	21
Chelmarsh	Highley	362	117	21
Highley	Highley	3,310	1,562	39
Sutton	Highley	56	22	22
Angel Bank & Farden	Ludlow	228	103	26
Ashford Bowdler	Ludlow	41	23	23
Ashford Carbonell	Ludlow	269	169	23
Batchcott & Richards Castle	Ludlow	36	20	18
Bedlam	Ludlow	76	35	13
Bitterley	Ludlow	95	45	19
Bromfield	Ludlow	88	42	27
Burford	Ludlow	1,156	563	55
Caynham	Ludlow	145	67	17
Clee Hill	Ludlow	633	341	34
Cleeton St Mary	Ludlow	51	23	11
Dhustone	Ludlow	88	38	29
Duxmoor & Whittytree	Ludlow	48	25	19
Greete	Ludlow	24	14	13
Hope Bagot	Ludlow	32	14	12
Knowbury	Ludlow	357	162	20
Ludlow	Ludlow	10,443	5,826	65
Middleton	Ludlow	89	43	25
Onibury	Ludlow	107	56	28
Overton	Ludlow	63	35	27
Priors Halton	Ludlow	13	6	29
Snitton	Ludlow	18	8	15
The Sheet	Ludlow	219	153	48
Walton (Onibury)	Ludlow	11	6	16
Whitton	Ludlow	47	27	6
Woofferton	Ludlow	48	27	22
Adderley	Market Drayton	200	98	16
Allfordgreen	Market Drayton	45	23	8

Community	Place Plan	Size		Connectivity: Maximum Overall Score
		Population	Dwellings	
Bletchley	Market Drayton	51	22	21
Cheswardine	Market Drayton	436	232	20
Child's Ercall	Market Drayton	449	211	10
Chipnall	Market Drayton	86	46	14
Crickmery & Wistanswick	Market Drayton	595	102	16
Eaton Upon Tern	Market Drayton	141	61	7
Hinstock	Market Drayton	571	246	25
Hodnet	Market Drayton	555	308	33
Howle	Market Drayton	7	4	10
Lockleywood	Market Drayton	69	30	20
Longford	Market Drayton	71	31	29
Longslow	Market Drayton	41	18	38
Marchamley	Market Drayton	178	81	18
Market Drayton	Market Drayton	12,828	6,184	67
Mill Green	Market Drayton	36	15	20
Moreton Say	Market Drayton	48	21	23
Norton In Hales	Market Drayton	288	138	18
Ollerton	Market Drayton	58	25	7
Peplow	Market Drayton	35	14	6
Rosehill	Market Drayton	274	38	28
Soudley (Great)	Market Drayton	113	54	18
Stoke Heath	Market Drayton	337	77	20
Stoke Upon Tern	Market Drayton	120	52	15
Ternhill	Market Drayton	848	408	33
Wollerton	Market Drayton	189	87	25
Woodseaves	Market Drayton	138	59	28
Woore, Ireland's Cross & Pipe Gate	Market Drayton	1,065	497	28
Arcscott	Minsterley & Pontesbury	56	27	25
Asterley	Minsterley & Pontesbury	98	47	18
Cruckmeole	Minsterley & Pontesbury	45	21	31
Cruckton	Minsterley & Pontesbury	90	42	27
Edge	Minsterley & Pontesbury	19	9	15
Habberley	Minsterley & Pontesbury	62	36	21
Hinton	Minsterley & Pontesbury	29	14	22
Horsebridge	Minsterley & Pontesbury	36	14	26
Lea Cross	Minsterley & Pontesbury	69	33	27
Minsterley	Minsterley & Pontesbury	1,732	815	38
Plealey	Minsterley & Pontesbury	112	54	26
Plealey Road & Halston	Minsterley & Pontesbury	48	23	28
Ploxgreen	Minsterley & Pontesbury	110	48	33
Pontesbury	Minsterley & Pontesbury	1,689	876	47
Pontesbury Hill	Minsterley & Pontesbury	238	107	43
Pontesford	Minsterley & Pontesbury	90	52	44
Shorthill	Minsterley & Pontesbury	40	19	26
Bourton	Much Wenlock	93	52	10
Bourton Westwood	Much Wenlock	14	8	25
Brockton (Stanton Long)	Much Wenlock	152	44	10
Buildwas	Much Wenlock	139	71	25

Community	Place Plan	Size		Connectivity: Maximum Overall Score
		Population	Dwellings	
Callaughton	Much Wenlock	32	18	24
Church Preen	Much Wenlock	42	18	7
Cressage	Much Wenlock	684	309	29
Easthope	Much Wenlock	73	29	7
Farley	Much Wenlock	23	10	20
Gleedon Hill	Much Wenlock	18	8	33
Harley	Much Wenlock	135	64	20
Homer	Much Wenlock	250	111	37
Hughley	Much Wenlock	51	22	8
Kenley	Much Wenlock	62	27	8
Much Wenlock	Much Wenlock	2,090	1,109	50
Sheinton	Much Wenlock	36	17	15
Shipton	Much Wenlock	33	20	6
Stanton Long	Much Wenlock	55	22	5
Stretton Westwood	Much Wenlock	34	19	20
Babbinswood	Oswestry	165	73	36
Bronygarth & Castle Mill	Oswestry	98	44	28
Cefn Blodwel	Oswestry	16	8	9
Chirk Bank	Oswestry	512	253	49
Coed-Y-Go	Oswestry	64	28	46
Crickheath	Oswestry	68	28	19
Croesaubach	Oswestry	23	11	22
Eardiston	Oswestry	37	16	14
Edgerley	Oswestry	54	26	10
Glynmorlas & Rhyn	Oswestry	65	31	34
Gobowen	Oswestry	2,922	1,432	52
Grimpo	Oswestry	46	21	20
Haughton (West Felton)	Oswestry	22	10	9
Hindford	Oswestry	40	20	22
Kinnerley	Oswestry	242	124	25
Knockin	Oswestry	177	98	24
Knockin Heath, Dovaston & Dovaston Bank	Oswestry	150	81	24
Llanyblodwel	Oswestry	71	36	13
Llanymynech	Oswestry	579	250	35
Llynclys	Oswestry	268	128	29
Maesbrook & Maesbrook Green	Oswestry	158	70	12
Maesbury	Oswestry	179	99	30
Maesbury Marsh	Oswestry	226	111	22
Middle & Lower Hengoed	Oswestry	134	59	43
Middleton & Aston Square	Oswestry	29	23	32
Morton & Morton Common	Oswestry	98	41	22
Nantmawr	Oswestry	51	25	11
Oswestry	Oswestry	18,681	8,896	73
Pant	Oswestry	949	450	35
Pant Glas	Oswestry	46	20	27
Park Hall	Oswestry	479	212	55
Pentre (Wilcot)	Oswestry	42	20	10

Community	Place Plan	Size		Connectivity: Maximum Overall Score
		Population	Dwellings	
Pont Faen	Oswestry	35	18	39
Porthywaen	Oswestry	130	71	26
Queens Head	Oswestry	98	45	29
Rednal	Oswestry	33	15	9
Rhoswel	Oswestry	241	102	46
Rhyd-y-Croesau	Oswestry	12	6	6
Ruyton XI Towns	Oswestry	907	365	25
Selattyn	Oswestry	123	55	26
St Martins	Oswestry	2,782	1,285	46
St Martins Moor	Oswestry	65	31	42
Sweeney Mountain & Nant-Y-Caws	Oswestry	132	67	40
The Wern	Oswestry	78	35	35
Treflach	Oswestry	187	94	23
Trefonen	Oswestry	676	311	33
Upper Hengoed	Oswestry	78	35	34
Weirbrook	Oswestry	35	15	27
Wern Ddu	Oswestry	8	4	7
West Felton	Oswestry	972	433	34
Weston Rhyn & Preesgweene	Oswestry	1,490	749	45
Whittington	Oswestry	1,640	777	42
Woolston Bank	Oswestry	26	21	19
Wykey	Oswestry	45	19	10
Crackley Bank	Shifnal	45	22	26
Heath Hill	Shifnal	75	32	15
Kemberton	Shifnal	178	90	32
Lilyhurst	Shifnal	24	10	17
Sheriffhales	Shifnal	282	118	20
Shifnal	Shifnal	9,855	4,306	61
Tong Norton	Shifnal	177	28	15
Weston (Monkhopton)	Shifnal	56	18	5
Alberbury	Shrewsbury	131	59	10
Albrighton (Pimhill)	Shrewsbury	31	15	35
Annscroft	Shrewsbury	248	97	24
Astley	Shrewsbury	104	51	32
Atcham	Shrewsbury	106	55	26
Baschurch	Shrewsbury	2,041	928	37
Bayston Hill	Shrewsbury	4,766	2,143	57
Berrington	Shrewsbury	64	30	27
Berwick	Shrewsbury	46	22	29
Bicton	Shrewsbury	354	140	40
Bings Heath	Shrewsbury	63	30	30
Bomere Heath	Shrewsbury	1,263	596	29
Cardeston	Shrewsbury	39	22	16
Castle Pulverbatch	Shrewsbury	128	55	9
Chavel	Shrewsbury	40	19	33
Church Pulverbatch	Shrewsbury	44	19	9
Condover	Shrewsbury	685	314	33

Community	Place Plan	Size		Connectivity: Maximum Overall Score
		Population	Dwellings	
Cound & Upper Cound	Shrewsbury	119	56	21
Coundmoor & Evenwood Common	Shrewsbury	96	36	11
Cross Houses	Shrewsbury	915	415	34
Donnington & Charlton Hill	Shrewsbury	34	16	10
Dorrington	Shrewsbury	733	558	36
Eaton Constantine	Shrewsbury	122	64	14
Ensdon	Shrewsbury	20	10	18
Exfords Green	Shrewsbury	34	17	20
Eyton On Severn	Shrewsbury	15	7	8
Felton Butler	Shrewsbury	25	12	17
Fitz	Shrewsbury	37	16	12
Ford	Shrewsbury	585	289	33
Ford Heath	Shrewsbury	52	23	16
Forton Heath & Mytton	Shrewsbury	199	86	14
Four Crosses, Shepherds Lane & Calcott	Shrewsbury	158	90	47
Garmston	Shrewsbury	63	33	15
Grafton	Shrewsbury	126	54	13
Great Ness	Shrewsbury	82	40	23
Halfway House	Shrewsbury	206	76	17
Hanwood	Shrewsbury	642	288	35
Hanwood Bank	Shrewsbury	592	264	35
Haughton (Upton Magna)	Shrewsbury	13	5	15
Hookagate	Shrewsbury	126	55	38
Hopton Valeswood	Shrewsbury	140	55	23
Kinton	Shrewsbury	81	36	21
Leaton	Shrewsbury	23	11	23
Leighton	Shrewsbury	114	60	17
Little Ness	Shrewsbury	159	52	16
Longden	Shrewsbury	288	132	26
Longden Common	Shrewsbury	102	51	13
Longwood	Shrewsbury	36	19	13
Lyth Bank & Lyth Hill	Shrewsbury	202	92	29
Melverley	Shrewsbury	37	15	9
Melverley Green	Shrewsbury	99	41	8
Merrington	Shrewsbury	31	15	23
Montford	Shrewsbury	33	16	17
Montford Bridge	Shrewsbury	325	153	28
Nesscliffe	Shrewsbury	385	179	27
Nox	Shrewsbury	16	7	17
Preston	Shrewsbury	31	12	17
Preston Gubbals	Shrewsbury	36	17	25
Preston Montford	Shrewsbury	7	5	28
Ruckley & Langley	Shrewsbury	43	19	10
Rushton	Shrewsbury	38	18	10
Ryton (Condover)	Shrewsbury	172	72	29
Shrawardine	Shrewsbury	102	50	10
Shrewsbury	Shrewsbury	80,831	38,366	79

Community	Place Plan	Size		Connectivity: Maximum Overall Score
		Population	Dwellings	
Stanwardine in the Fields	Shrewsbury	48	23	18
Stapleton	Shrewsbury	102	52	24
Stapleton Common	Shrewsbury	76	38	17
Stoney Stretton	Shrewsbury	44	19	14
Uffington	Shrewsbury	139	65	37
Upper Astley	Shrewsbury	85	40	34
Uppington	Shrewsbury	58	27	11
Upton Magna	Shrewsbury	244	95	22
Vennington	Shrewsbury	49	21	10
Vron Gate	Shrewsbury	16	7	8
Walford Heath & Oldwood	Shrewsbury	164	77	18
Wattlesborough Heath	Shrewsbury	187	66	15
Westbury	Shrewsbury	555	215	14
Westley	Shrewsbury	28	10	15
Weston Lullingfields	Shrewsbury	97	47	19
Weston Wharf & Weston Common	Shrewsbury	136	66	17
Wilcott	Shrewsbury	403	69	21
Withington	Shrewsbury	157	70	15
Wollaston	Shrewsbury	30	10	11
Wrentnall	Shrewsbury	37	16	11
Wroxeter	Shrewsbury	66	31	17
Yeaton	Shrewsbury	48	21	15
Yockleton	Shrewsbury	208	90	15
Aston	Wem	73	29	35
Barkers Green	Wem	49	21	34
Brown Heath	Wem	19	9	9
Burlton	Wem	114	45	13
Clive	Wem	391	185	34
Dobsons Bridge & Roving Bridge	Wem	78	33	11
Edgebolton & Moretonmill	Wem	167	62	30
Edstaston	Wem	42	22	21
Great Wytheford	Wem	32	12	15
Grinshill	Wem	160	76	30
Hadnall	Wem	645	282	37
Harmer Hill	Wem	338	175	20
High Hatton	Wem	68	27	8
Hollinwood	Wem	125	56	12
Lee Brockhurst	Wem	125	45	13
Loppington	Wem	278	128	13
Moreton Corbet	Wem	36	13	22
Myddle	Wem	447	199	20
Newtown	Wem	92	39	13
Noneley, Commonwood & Ruewood	Wem	77	31	26
Northwood	Wem	102	44	8
Platt Lane	Wem	52	23	12
Preston Brockhurst	Wem	61	22	20

Community	Place Plan	Size		Connectivity: Maximum Overall Score
		Population	Dwellings	
Quina Brook	Wem	89	33	15
Sansaw Heath	Wem	63	30	21
Shawbury	Wem	1,551	698	37
Stanley Green	Wem	102	45	12
Stanton Upon Hine Heath	Wem	179	89	14
Tilley	Wem	57	25	44
Waterloo	Wem	31	13	13
Welshend	Wem	29	13	12
Wem	Wem	6,191	2,990	57
Weston And Wixhill	Wem	149	67	16
Weston Heath (Weston under Redcastle)	Wem	44	20	12
Whixall	Wem	80	34	14
Yorton	Wem	52	25	31
Ash Magna & Ash Parva	Whitchurch	150	70	27
Broughall	Whitchurch	53	24	35
Calverhall	Whitchurch	190	91	7
Darliston	Whitchurch	43	19	19
Fauls	Whitchurch	110	49	13
Grindley Brook	Whitchurch	118	55	36
Ightfield	Whitchurch	198	95	9
Prees	Whitchurch	832	425	31
Prees Green	Whitchurch	101	38	25
Prees Heath	Whitchurch	227	111	31
Prees Higher Heath	Whitchurch	1,176	618	25
Prees Lower Heath	Whitchurch	88	33	22
Tilstock	Whitchurch	380	170	30
Whitchurch	Whitchurch	9,632	5,483	67

- 4.6. Perhaps unsurprisingly, it is evident from Figure 7 that there is a synergy between community size (resident population and the number of dwellings present) and community connectivity (maximum 'overall connectivity score' resulting from the new Department for Transport Connectivity Metric).
- 4.7. Specifically, in Shropshire the highest connectivity scores are achieved by the larger communities, demonstrating that generally the higher the resident population and numbers of dwellings, the greater the ability to support higher concentrations of destinations - enhancing connectivity.
- 4.8. However, it is also apparent that those communities with good access to such communities via more frequent public transport, less congested roads and/or more direct cycle and pedestrian routes also achieve higher connectivity scores, irrespective of their own resident population and number of dwellings.

Stage 3: Categorisation of Communities

- 4.9. Stage 3 of the assessment involved the categorisation of communities. The methodology outlined in this document for this stage of the assessment is based on the outputs of Stage 2 of the assessment for each of the communities identified through Stage 1 of the assessment.
- 4.10. Specifically, the methodology involves 'grouping' of communities into seven categories, defined by specific thresholds consisting of 'two gateways'. These are:

Figure 8: Community Category Threshold Gateways

Community Category	Gateway One			Gateway Two
	Population		Dwellings	Maximum Connectivity Score
Strategic Centre	50,000 or more	&	25,000 or more	75 or more (Band A)
Principal Centre	8,000 or more	&	4,000 or more	60 or more (Band A)
Key Centre	1,500 or more	&	750 or more	29 or more (Band A)
Primary Connected Village	700 or more	&	350 or more	21 or more (Band B or higher)
Secondary Connected Village	300 or more	&	150 or more	14 or more (Band D or higher)
Tertiary Connected Village	150 or more	&	75 or more	9 or more (Band F or higher)
Other Communities	149 or less	&	74 or fewer	8 or less (Band G or lower)

- 4.11. **Gateway one** relates to community size, using resident population and the number of dwellings present. **Gateway two** relates to community connectivity to employment, services and social engagements.
- 4.12. Gateway one performance is calculated using latest address point data, Census (2021) data, and the latest Mid-Year Population Estimate at small geographies at the time of assessment (2024) data.
- 4.13. Gateway two performance is calculated using the maximum 'overall connectivity score' for a community resulting from the new Department for Transport Connectivity Metric. This metric assesses the ability to access all potential destinations for employment, services and social engagements via public transport and active travel. As such, it is not limited to those located within a community, instead it considers all those accessible to the community. This is considered a more effective indicator of connectivity.

4.14. For the avoidance of doubt, a community is only included within a community category where it passes both of these gateways.

4.15. Reflecting the community categories and associated thresholds within the methodology outlined in this document, through this stage of assessment a 'community hierarchy' for Shropshire has been identified. This is detailed in Figure 9:

Figure 9: Shropshire Community Hierarchy

Category	Community	Place Plan
Strategic Centre	Shrewsbury	Shrewsbury
Principal Centre	Bridgnorth	Bridgnorth
	Ludlow	Ludlow
	Market Drayton	Market Drayton
	Oswestry	Oswestry
	Shifnal	Shifnal
	Whitchurch	Whitchurch
Key Centre	Albrighton	Albrighton
	Baschurch	Shrewsbury
	Bayston Hill	Shrewsbury
	Bishop's Castle	Bishop's Castle
	Broseley	Broseley
	Church Stretton	Church Stretton
	Cleobury Mortimer	Cleobury Mortimer
	Craven Arms	Craven Arms
	Ellesmere	Ellesmere
	Gobowen	Oswestry
	Highley	Highley
	Minsterley	Minsterley & Pontesbury
	Much Wenlock	Much Wenlock
	Pontesbury	Minsterley & Pontesbury
	St Martins	Oswestry
Wem	Wem	
Whittington	Oswestry	
Primary Connected Village	Alveley	Bridgnorth
	Bomere Heath	Shrewsbury
	Burford	Ludlow
	Cosford (including RAF Cosford)	Albrighton
	Cross Houses	Shrewsbury
	Dorrington	Shrewsbury
	Pant	Oswestry

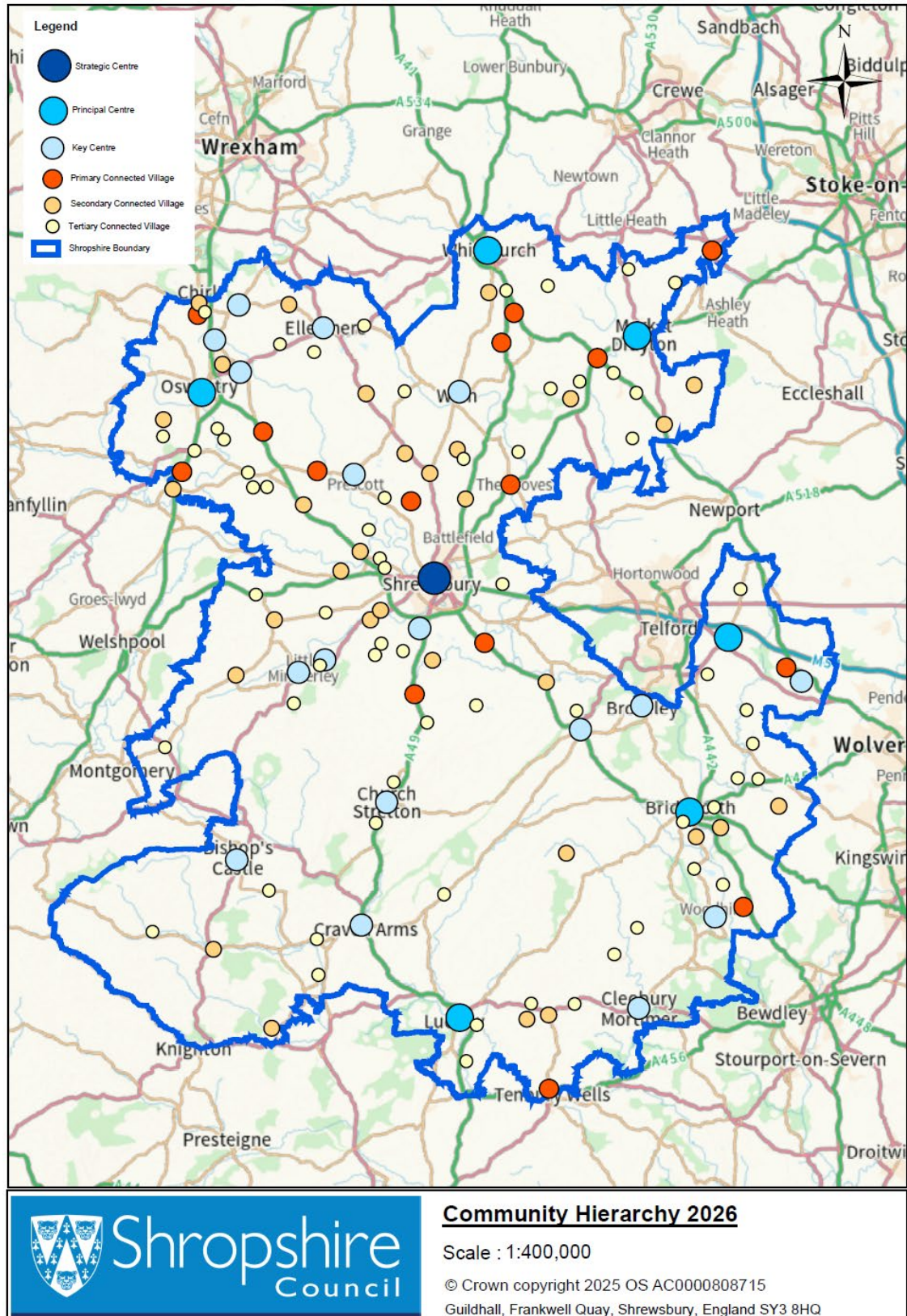
Category	Community	Place Plan
Primary Connected Village	Prees	Whitchurch
	Prees Higher Heath	Whitchurch
	Ruyton XI Towns	Oswestry
	Shawbury	Wem
	Ternhill	Market Drayton
	West Felton	Oswestry
	Weston Rhyn & Preesgweene	Oswestry
	Woore, Ireland's Cross & Pipe Gate	Market Drayton
Secondary Connected Village	Bucknell	Bishop's Castle
	Cheswardine	Market Drayton
	Chirk Bank	Oswestry
	Claverley	Bridgnorth
	Clee Hill	Ludlow
	Clive	Wem
	Clun	Bishop's Castle
	Cockshutt	Ellesmere
	Condover	Shrewsbury
	Cressage	Much Wenlock
	Ditton Priors	Bridgnorth
	Dudleston Heath	Ellesmere
	Eardington	Bridgnorth
	Ford	Shrewsbury
	Hadnall	Wem
	Hanwood	Shrewsbury
	Hanwood Bank	Shrewsbury
	Harmer Hill	Wem
	Hinstock	Market Drayton
	Hodnet	Market Drayton
	Knowbury	Ludlow
	Llanymynech	Oswestry
	Montford Bridge	Shrewsbury
	Myddle	Wem
	Nesscliffe	Shrewsbury
	Park Hall	Oswestry
	Quatford	Bridgnorth
	Tilstock	Whitchurch
Trefonen	Oswestry	
Westbury	Shrewsbury	
Worthen & Brockton	Bishop's Castle	
Tertiary Connected Village	Ackleton	Bridgnorth
	Acton Burnell	Church Stretton
	Adderley	Market Drayton

Category	Community	Place Plan
Tertiary Connected Village	All Stretton	Church Stretton
	Angel Bank & Farden	Ludlow
	Annscroft	Shrewsbury
	Ashford Carbonell	Ludlow
	Aston-On-Clun	Craven Arms
	Beckbury	Albrighton
	Bicton	Shrewsbury
	Chelmarsh	Highley
	Child's Ercall	Market Drayton
	Chirbury	Bishop's Castle
	Clungunford & Abcott	Bishop's Castle
	Crickmery & Wistanswick	Market Drayton
	Diddlebury	Craven Arms
	Doddington	Cleobury Mortimer
	Forton Heath & Mytton	Shrewsbury
	Four Crosses, Shepherds Lane & Calcott	Shrewsbury
	Grinshill	Wem
	Halfway House	Shrewsbury
	Hampton Loade	Bridgnorth
	Hilton	Bridgnorth
	Homer	Much Wenlock
	Ightfield	Whitchurch
	Kemberton	Shifnal
	Kinnerley	Oswestry
	Knockin	Oswestry
	Knockin Heath, Dovaston & Dovaston Bank	Oswestry
	Little Stretton	Church Stretton
	Llynclys	Oswestry
	Longden	Shrewsbury
	Longnor	Church Stretton
	Loppington	Wem
	Lydbury North	Bishop's Castle
	Lyth Bank & Lyth Hill	Shrewsbury
	Maesbury	Oswestry
Maesbury Marsh	Oswestry	
Marchamley	Market Drayton	
Newcastle on Clun	Bishop's Castle	
Norton In Hales	Market Drayton	
Oldbury	Bridgnorth	
Oreton	Cleobury Mortimer	
Perthy & Welsh Frankton	Ellesmere	
Pontesbury Hill	Minsterley & Pontesbury	

Category	Community	Place Plan
Tertiary Connected Village	Prees Heath	Whitchurch
	Rhoswiell	Oswestry
	Sheriffhales	Shifnal
	Snailbeach	Bishop's Castle
	Stanton Upon Hine Heath	Wem
	Stoke Heath	Market Drayton
	Stottesdon	Cleobury Mortimer
	Tetchill	Ellesmere
	The Hobbins	Bridgnorth
	The Sheet	Ludlow
	Treflach	Oswestry
	Upton Magna	Shrewsbury
	Walford Heath & Oldwood	Shrewsbury
	Welshampton	Ellesmere
	Wollerton	Market Drayton
	Worfield	Bridgnorth
Yockleton	Shrewsbury	
Other Communities	<p>All other communities which are for planning policy purposes classified as hamlets or other named locations consisting of scattered groups of house.</p> <p>Such communities are outside the predominantly built-up area.</p>	

4.16. Figure 10 illustrates the spatial distribution of those communities identified as a Strategic Centre, Principal Centre, Key Centre, Primary Connected Village, Secondary Connected Village, or Tertiary Connected Village within the Shropshire community hierarchy.

Figure 10: Map Illustrating the Spatial Distribution of Communities in the Shropshire Community Hierarchy



5. Conclusion

Methodology

- 5.1. Shropshire Council considers the defined methodology for this 'community hierarchy' is proportionate and robust. It draws upon *specific and consistent criteria*, utilising comprehensive datasets, which provide a valuable insight into the characteristics of our communities.
- 5.2. Planning judgement is required in establishing the 'thresholds' between the different community categories, but it is considered these 'thresholds' are entirely appropriate having been informed by consideration of the characteristics of Shropshire.

Assessment

- 5.3. Shropshire Council considers that the assessment undertaken is consistent with the defined methodology and results in the identification of an appropriate 'community hierarchy' for Shropshire.
- 5.4. This 'community hierarchy' is responsive to the size of our communities and their connectivity to employment, services and social engagements.

Application of the 'Community Hierarchy'

- 5.5. The 'community hierarchy' will form a key part of the evidence that underpins the next Shropshire Local Plan. Specifically, it will inform decisions on:
 - a. The overarching approach to the strategic distribution of development in the spatial strategy of the next Local Plan.
 - b. The role of individual communities in supporting the overarching approach to the strategic distribution of development of the spatial strategy in the next Local Plan.
 - c. The specific strategies for individual communities within the next Local Plan.
- 5.6. Crucially, whilst the 'community hierarchy' is considered a key part of the evidence supporting the next Local Plan, other evidence will also inform these decisions. This may include evidence related to such factors as:
 - a. The infrastructure capacity of our communities.
 - b. The known demand for housing and employment opportunities in our communities.
 - c. The constraints present within our communities.
 - d. The opportunities that may exist within our communities.