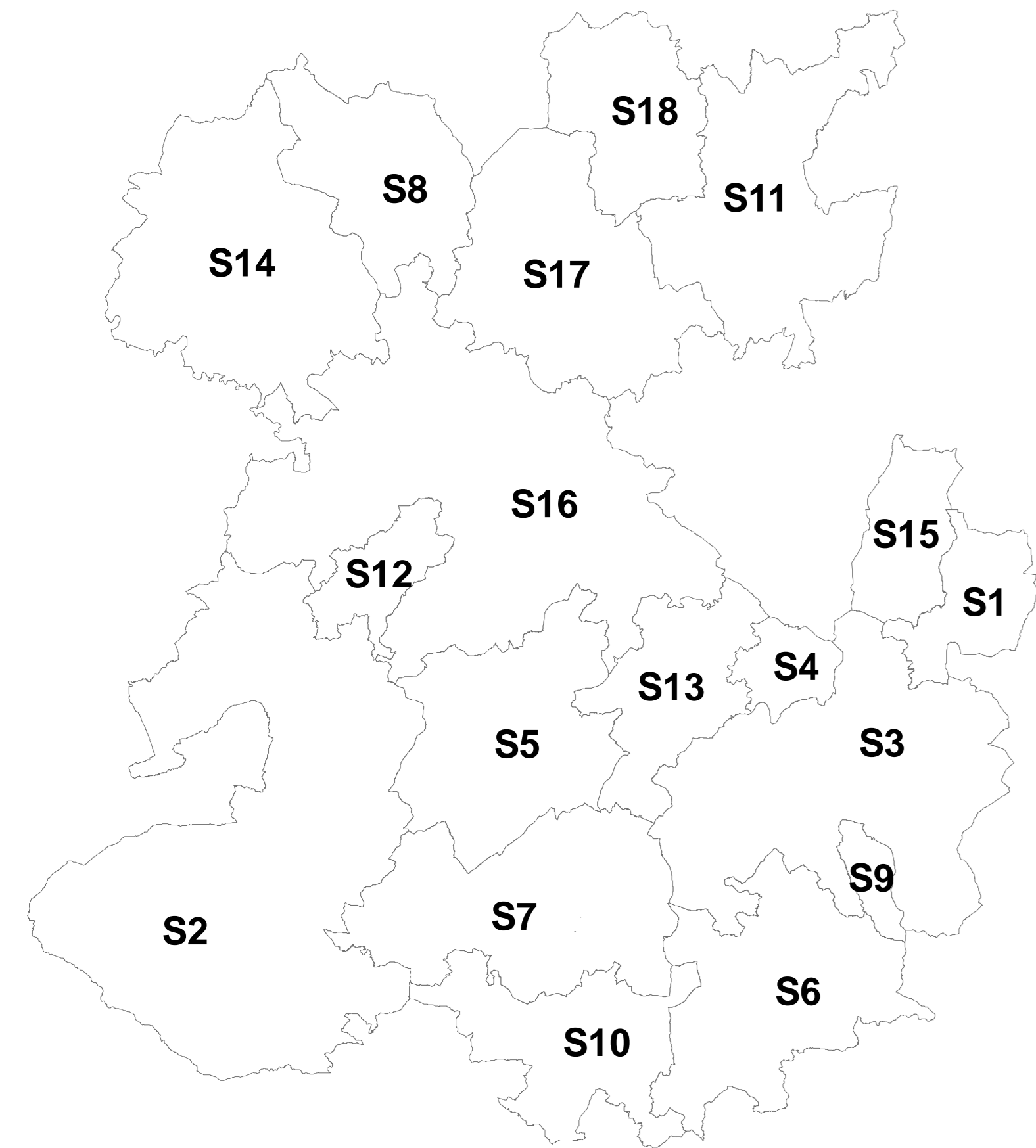


SHROPSHIRE COUNCIL LOCAL PLAN 2016-38 POLICIES MAP

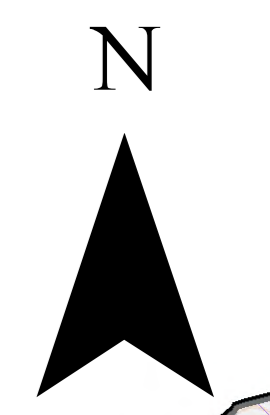
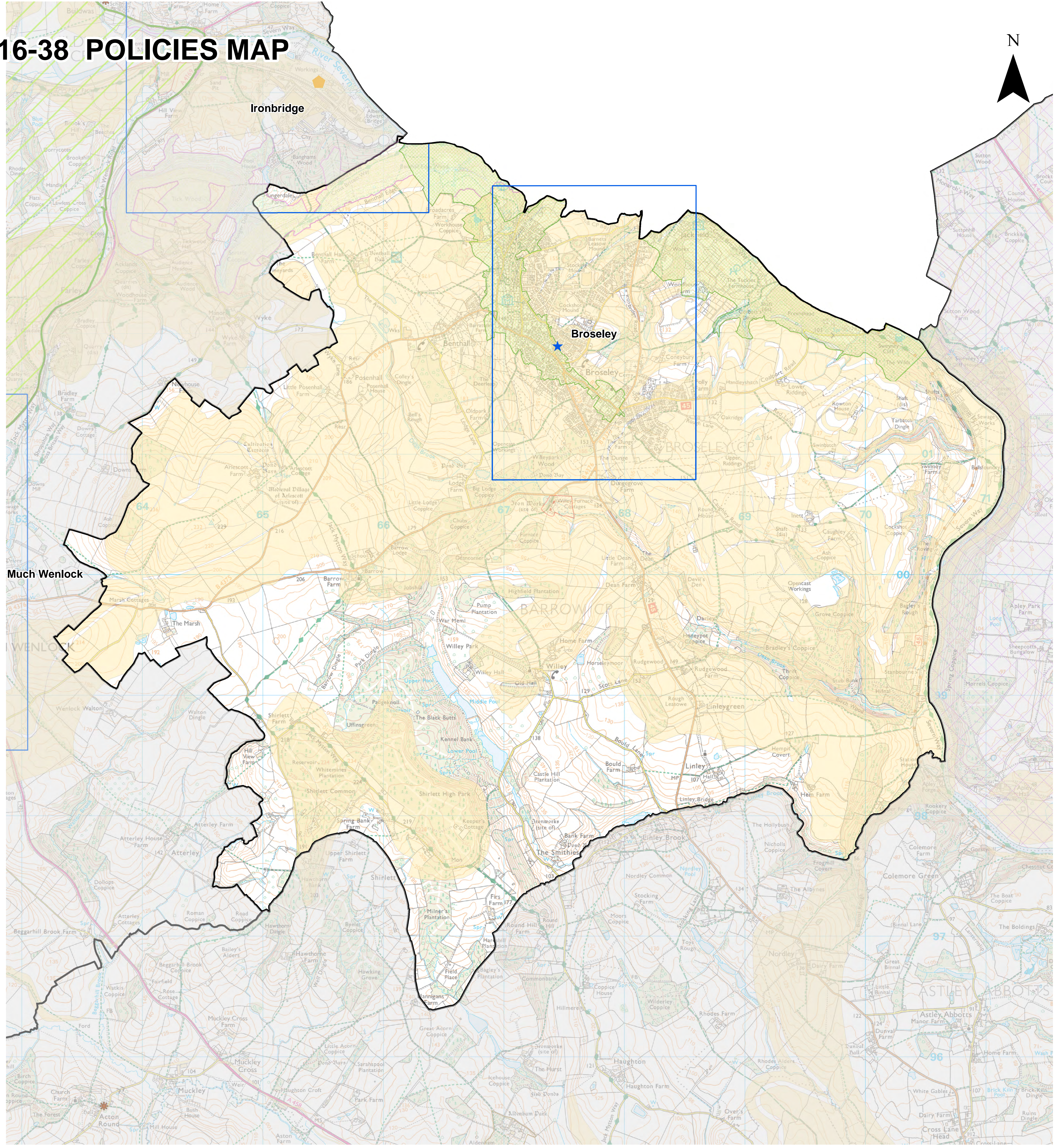
S4 Broseley Place Plan Area

Inset for Broseley Place Plan Area

 Broseley



Number	Area
S1	Abrington
S2	Bishop's Castle
S3	Bridgehampton
S4	Broseley
S5	Church Stretton
S6	Clebury Minterne
S7	Coverdale
S8	Eblesmere
S9	Highley
S10	Ludlow
S11	Market Drayton
S12	Much Wenlock
S13	Portesbury & Minsterley
S14	Daventry
S15	St. Martin
S16	Shrewsbury
S17	Wem
S18	Whitchurch



KEY

Local Plan 2016-38

-  Strategic Settlements
-  Strategic Site
-  Local Plan Housing Allocation
-  Local Plan Employment Allocation
-  Local Plan Mixed Allocation
-  Future Direction of Growth
-  Protected Employment Land
-  Proposed North West Relief Road
-  Canal Line
-  Safeguarded Land
-  Development Boundary
-  Town Centres
-  Primary Shopping Area
-  Place Plan Area
-  Inset
-  Broad Location for Sports Facility




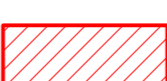






Hierarchy of Settlements

-  Strategic Site
-  Strategic Settlements
-  Strategic Centre
-  Principal Centres
-  Key Centres
-  Community Hubs
-  Community Cluster

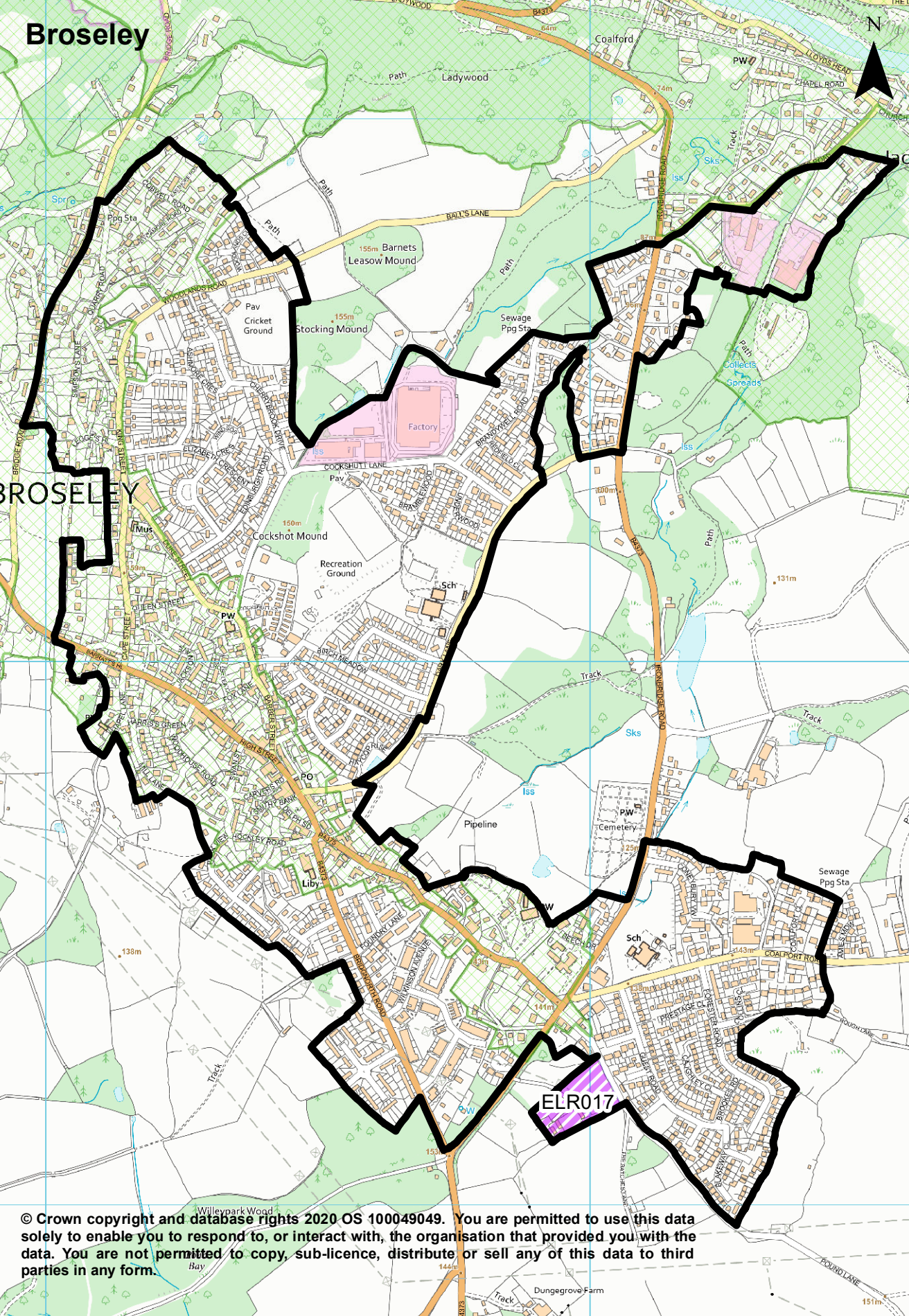
Saved SAMDev

-  Saved SAMDev Employment Allocation
-  Saved SAMDev Housing Allocation
-  Saved SAMDev Mixed Allocations
-  Saved SAMDev Sustainable Urban Extensions
-  Saved Mineral Sites
-  Key Area of Change

Other Information

-  Conservation Areas
-  Registered Battlefields
-  Registered Parks and Gardens
-  Scheduled Monuments
-  World Heritage Sites
-  Ramsar Sites
-  Special Areas of Conservation
-  Sites of Special Scientific Interest
-  Shropshire Hills Area of Outstanding Natural Beauty
-  Green Belt

Broseley



© Crown copyright and database rights 2020 OS 100049049. You are permitted to use this data solely to enable you to respond to, or interact with, the organisation that provided you with the data. You are not permitted to copy, sub-licence, distribute or sell any of this data to third parties in any form.