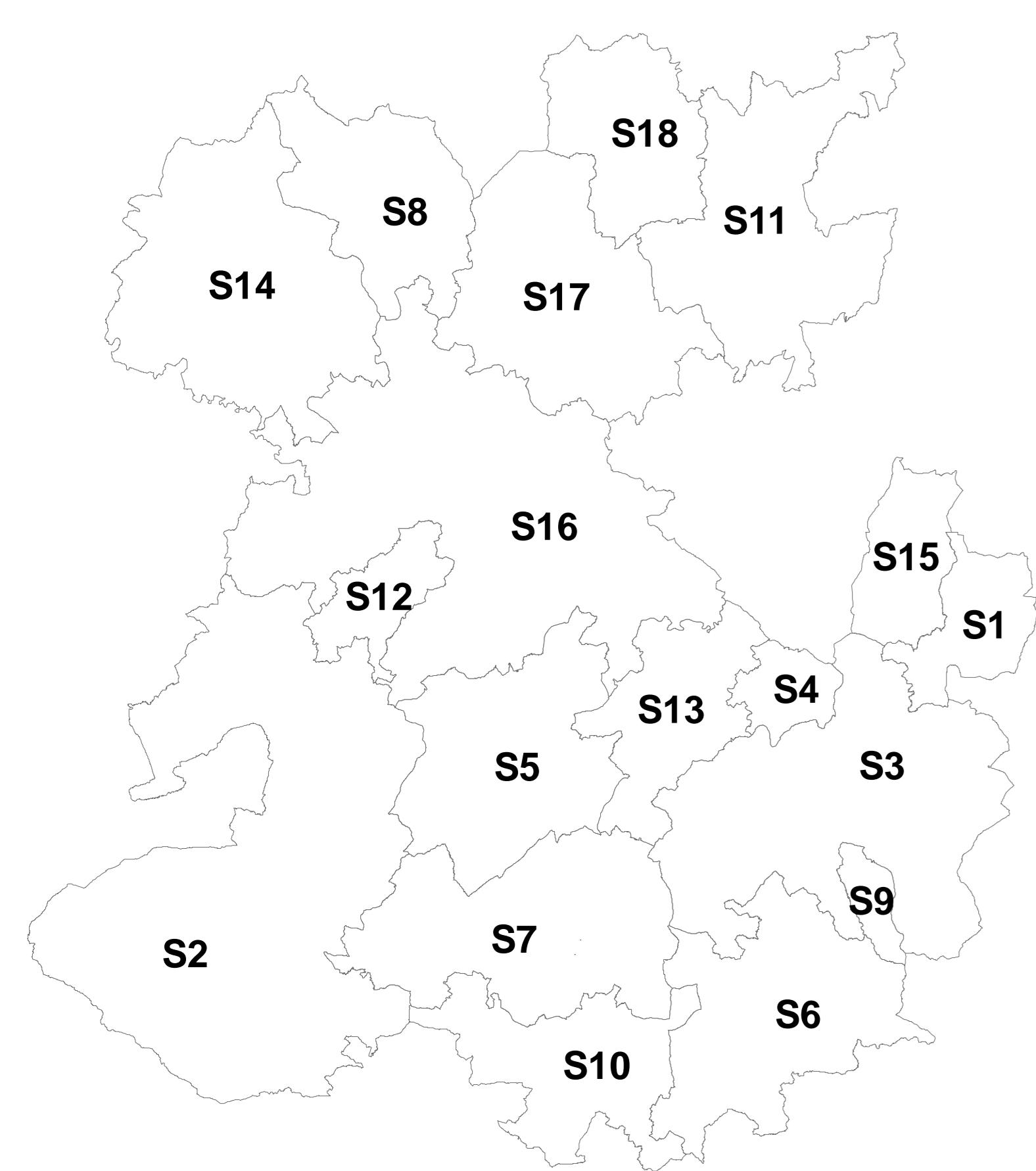


SHROPSHIRE COUNCIL LOCAL PLAN 2016-38 POLICIES MAP

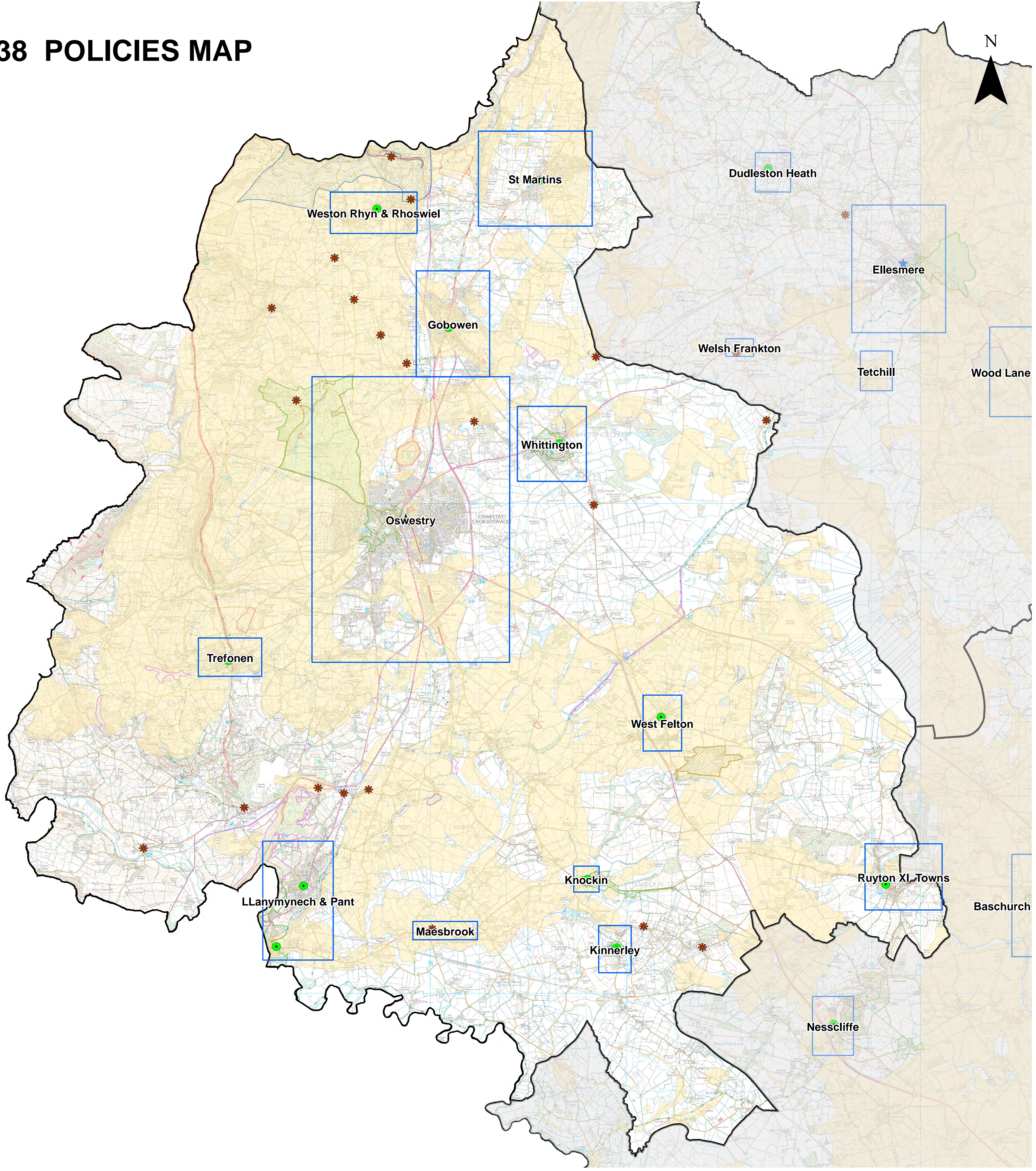
S14 Oswestry Place Plan Area

Insets for Oswestry Place Plan Area

- Oswestry
- Gobowen
- Kinnerley
- Knockin
- LLanymynech & Pant
- Maesbrook
- Ruyton XI Towns
- St Martins
- Trefonen
- West Felton
- Weston Rhyn & Rhoswiell
- Whittington



number	Area
S1	Albrighton
S2	Bishop's Castle
S3	Bridgnorth
S4	Broseley
S5	Church Stretton
S6	Clebury Mortimer
S7	Craven Arms
S8	Ellesmere
S9	Highley
S10	Ludlow
S11	Market Drayton
S13	Much Wenlock
S14	Oswestry
S12	Pontesbury & Minsterley
S15	Shifnal
S16	Shrewsbury
S17	Wem
S18	Whitchurch



© Crown copyright 2020 OS 100049049

KEY

Local Plan 2016-38

-  Strategic Settlements
-  Strategic Site
-  Local Plan Housing Allocation
-  Local Plan Employment Allocation
-  Local Plan Mixed Allocation
-  Future Direction of Growth
-  Protected Employment Land
-  Proposed North West Relief Road
-  Canal Line
-  Safeguarded Land
-  Development Boundary
-  Town Centres
-  Primary Shopping Area
-  Place Plan Area
-  Inset
-  Broad Location for Sports Facility




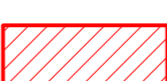






Hierarchy of Settlements

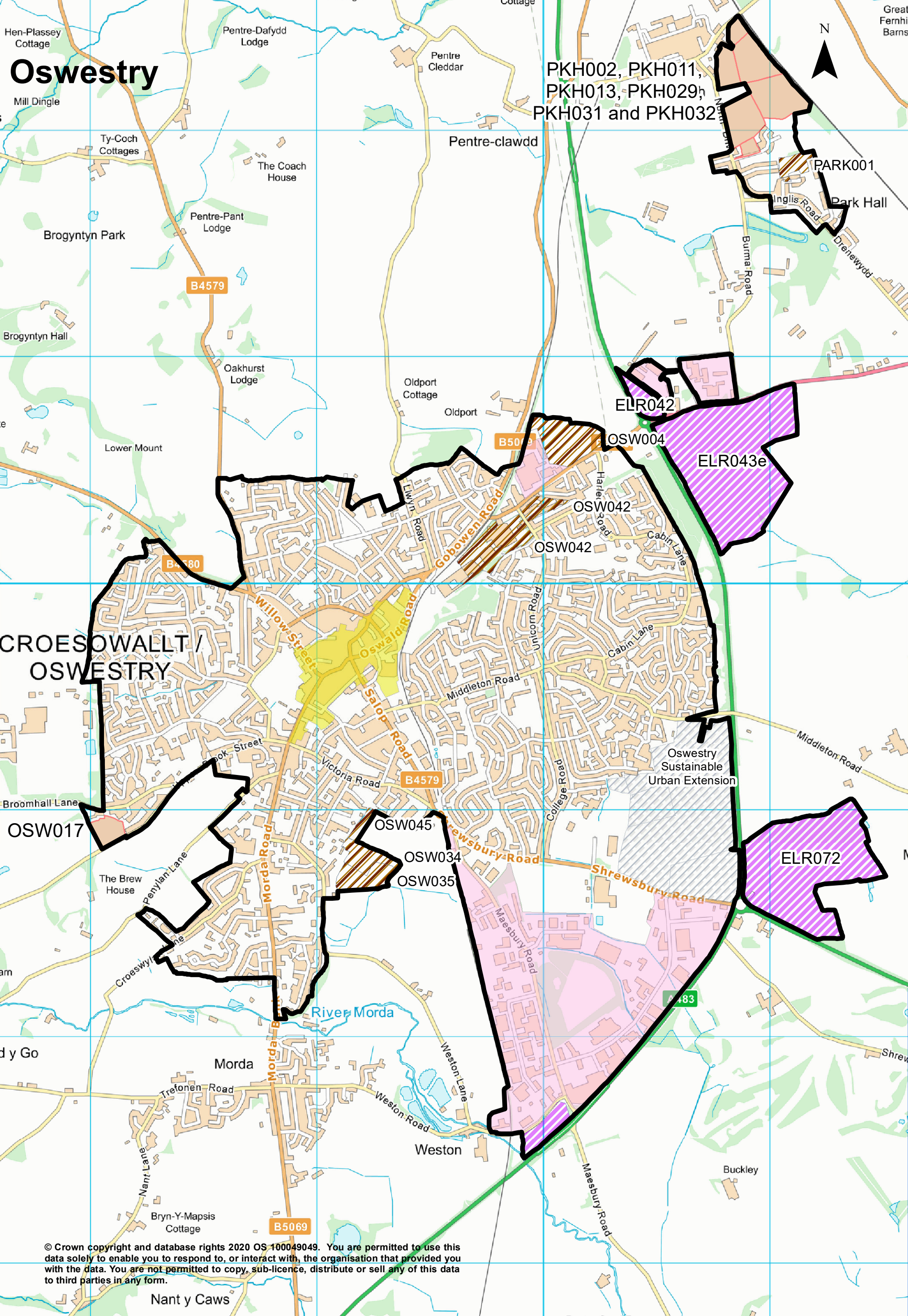
-  Strategic Site
-  Strategic Settlements
-  Strategic Centre
-  Principal Centres
-  Key Centres
-  Community Hubs
-  Community Cluster

Saved SAMDev

-  Saved SAMDev Employment Allocation
-  Saved SAMDev Housing Allocation
-  Saved SAMDev Mixed Allocations
-  Saved SAMDev Sustainable Urban Extensions
-  Saved Mineral Sites
-  Key Area of Change

Other Information

-  Conservation Areas
-  Registered Battlefields
-  Registered Parks and Gardens
-  Scheduled Monuments
-  World Heritage Sites
-  Ramsar Sites
-  Special Areas of Conservation
-  Sites of Special Scientific Interest
-  Shropshire Hills Area of Outstanding Natural Beauty
-  Green Belt



Oswestry

PKH002, PKH011,
PKH013, PKH029,
PKH031 and PKH032

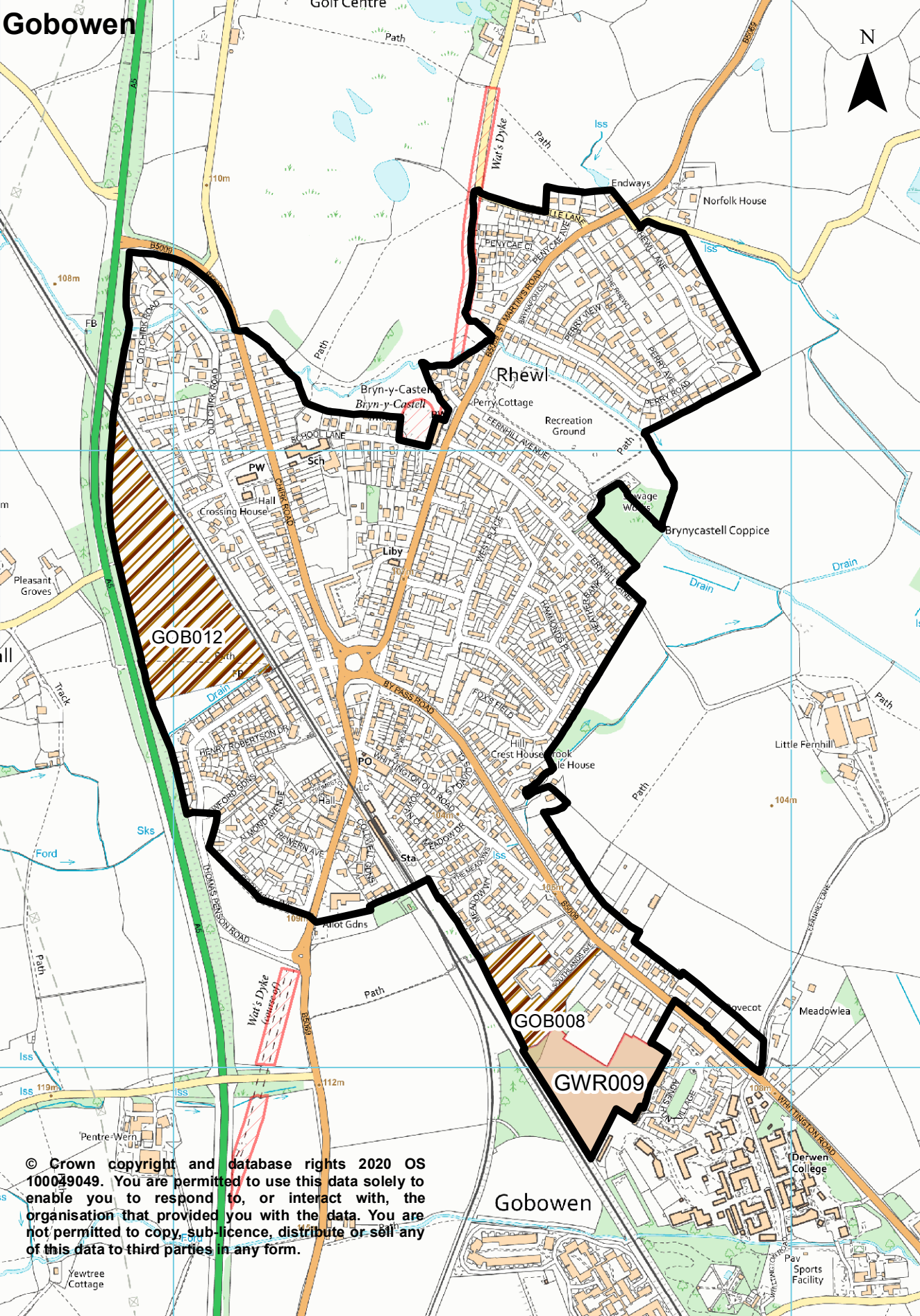
CROESOWALLT / OSWESTRY

Oswestry Sustainable Urban Extension

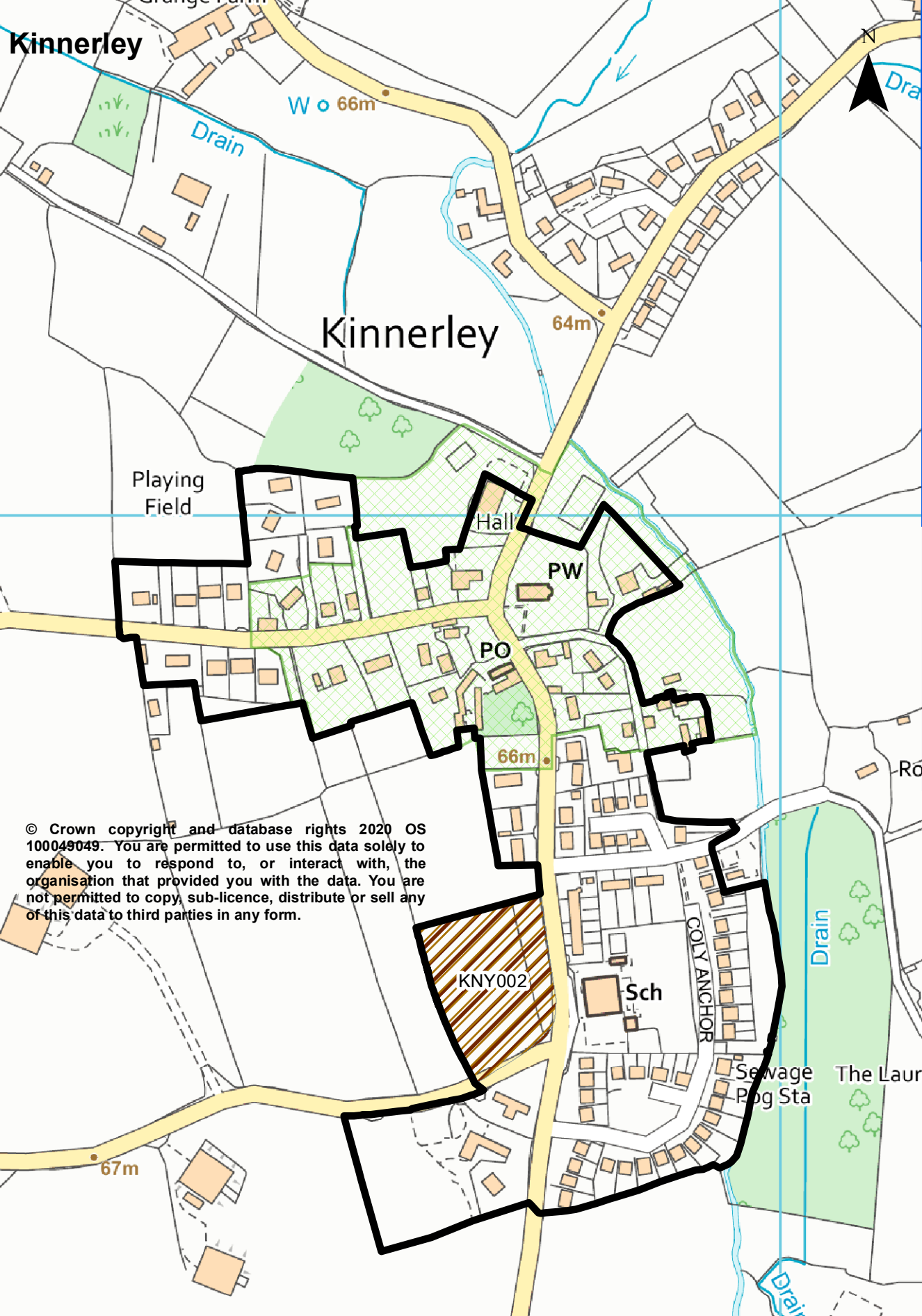
© Crown copyright and database rights 2020 OS 100049049. You are permitted to use this data solely to enable you to respond to, or interact with, the organisation that provided you with the data. You are not permitted to copy, sub-licence, distribute or sell any of this data to third parties in any form.

Nant y Caws

Gobowen



© Crown copyright and database rights 2020 OS 100049049. You are permitted to use this data solely to enable you to respond to, or interact with, the organisation that provided you with the data. You are not permitted to copy, sub-licence, distribute or sell any of this data to third parties in any form.



Kinnerley

Kinnerley

Playing Field

Hall

PW

PO

66m

KNY002

Sch

COLY ANCHOR

Drain

Sewage Pkg Sta

The Laur

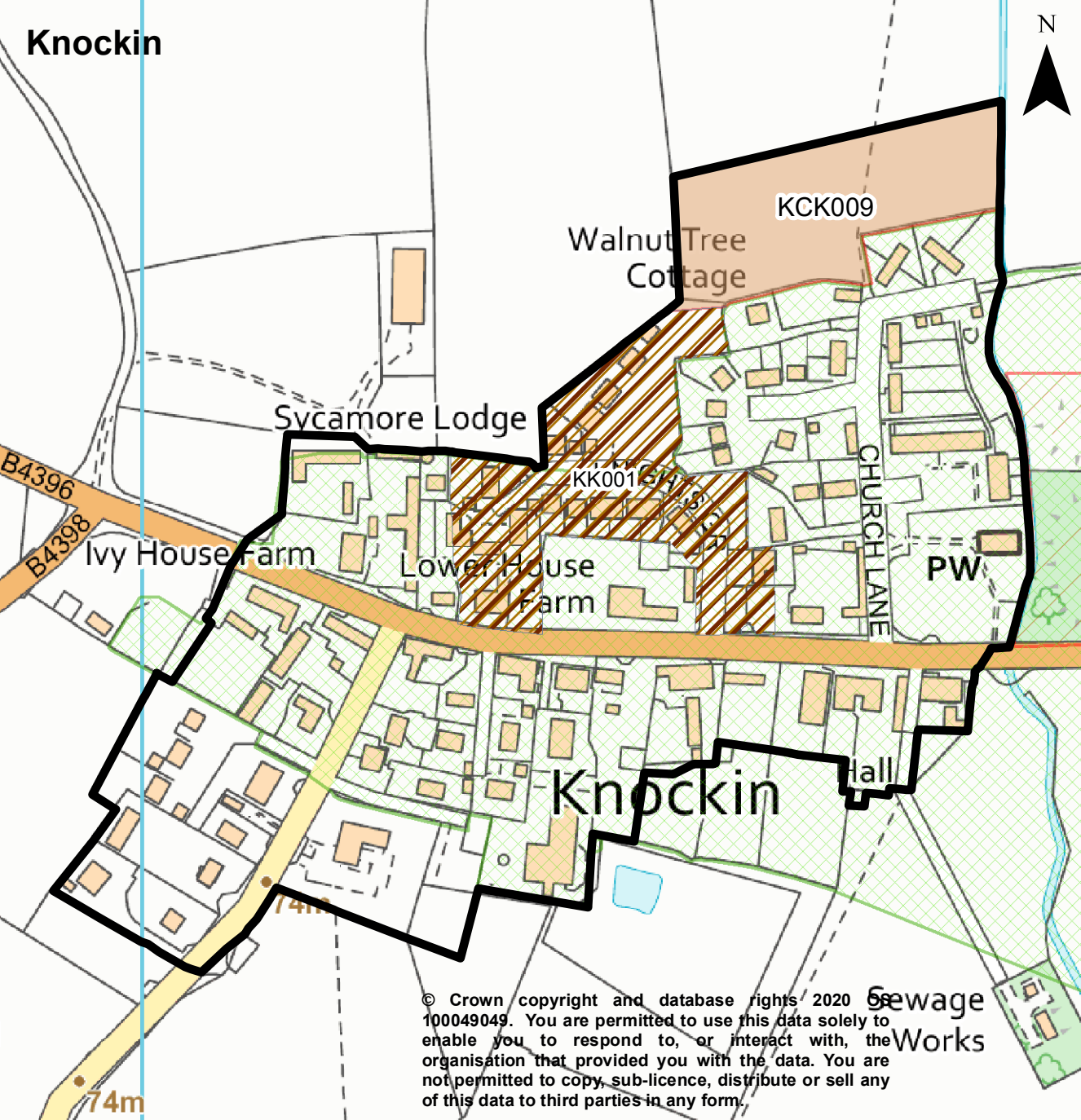
67m

W 66m

64m

© Crown copyright and database rights 2020 OS 100049049. You are permitted to use this data solely to enable you to respond to, or interact with, the organisation that provided you with the data. You are not permitted to copy, sub-licence, distribute or sell any of this data to third parties in any form.

Knockin



KCK009

Walnut Tree Cottage

Sycamore Lodge

KK001

CHURCH LANE

PW

B4396

B4398

Ivy House Farm

Lower House Farm

Knockin

all

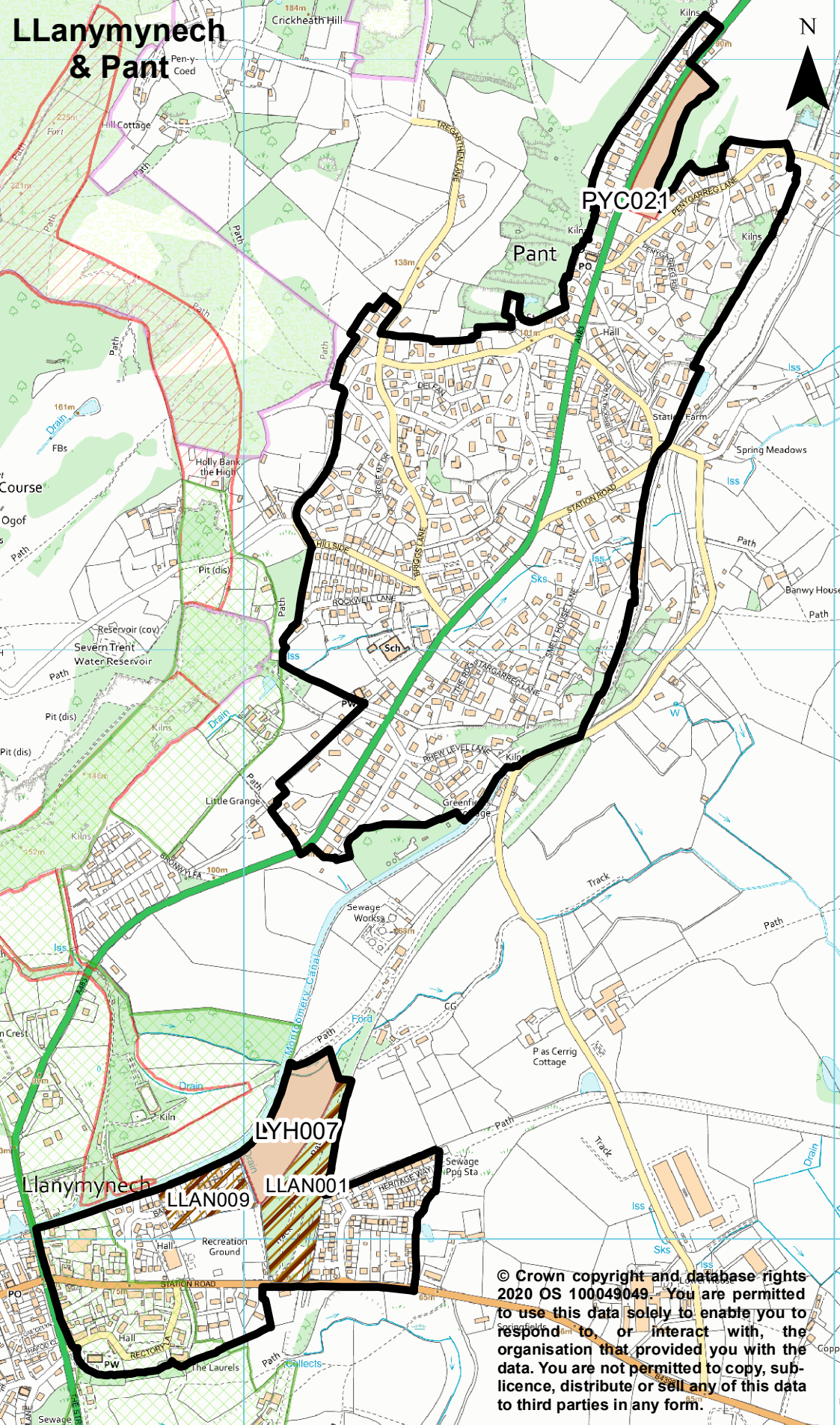
74m

74m

© Crown copyright and database rights 2020 100049049. You are permitted to use this data solely to enable you to respond to, or interact with, the organisation that provided you with the data. You are not permitted to copy, sub-licence, distribute or sell any of this data to third parties in any form.

Sewage Works

LLanymynech & Pant



PYC021

LYH007

LLAN009

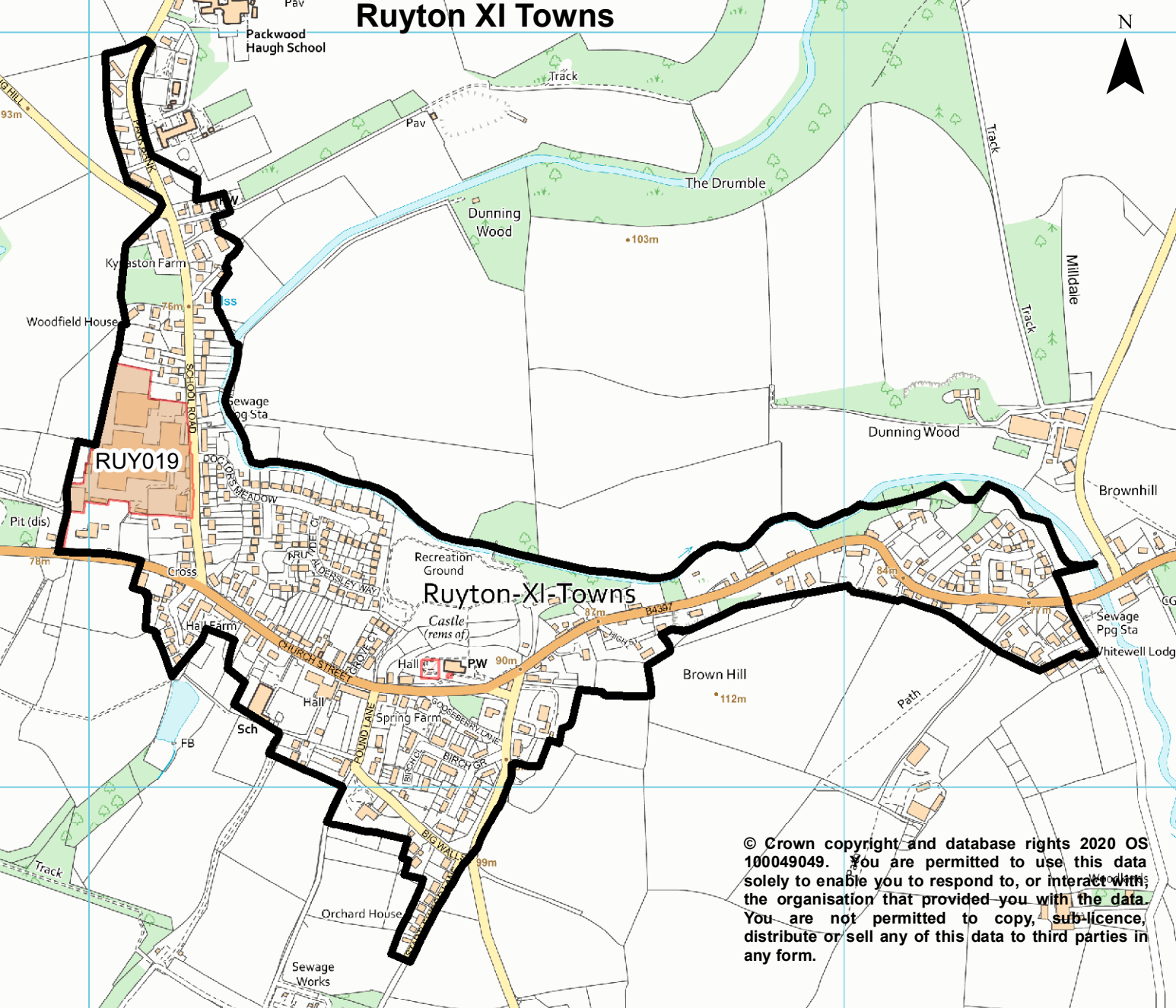
LLAN001

© Crown copyright and database rights 2020 OS 100049049. You are permitted to use this data solely to enable you to respond to, or interact with, the organisation that provided you with the data. You are not permitted to copy, sub-licence, distribute or sell any of this data to third parties in any form.

© Crown copyright and database rights 2020 OS 100049049. You are permitted to use this data solely to enable you to respond to, or interact with, the organisation that provided you with the data. You are not permitted to copy, sub-licence, distribute or sell any of this data to third parties in any form.



Ruyton XI Towns



© Crown copyright and database rights 2020 OS 100049049. You are permitted to use this data solely to enable you to respond to, or interact with, the organisation that provided you with the data. You are not permitted to copy, sub-licence, distribute or sell any of this data to third parties in any form.

Trefonen

Vron Cottage

Path



CHAPEL LANE

OSWESTRY ROAD

Path

178m

Vron Farm

Trefonen

Recreation Ground

Woodlands

FB

Sandrock

180m

Sch

Hall

PW

SCHOOL LANE

WOODLAND VIEW

HOLLIES LANE

SPRING BANK

SPRING BANK

OLD POST OFFICE LANE

MATHOUSE LA

PELLAN LANE

PO

MARTINS FIELDS

RECTORY CL

BROOKLEA

FB

Bwlytai Wood

LONDON

DALLAS LANE

19m

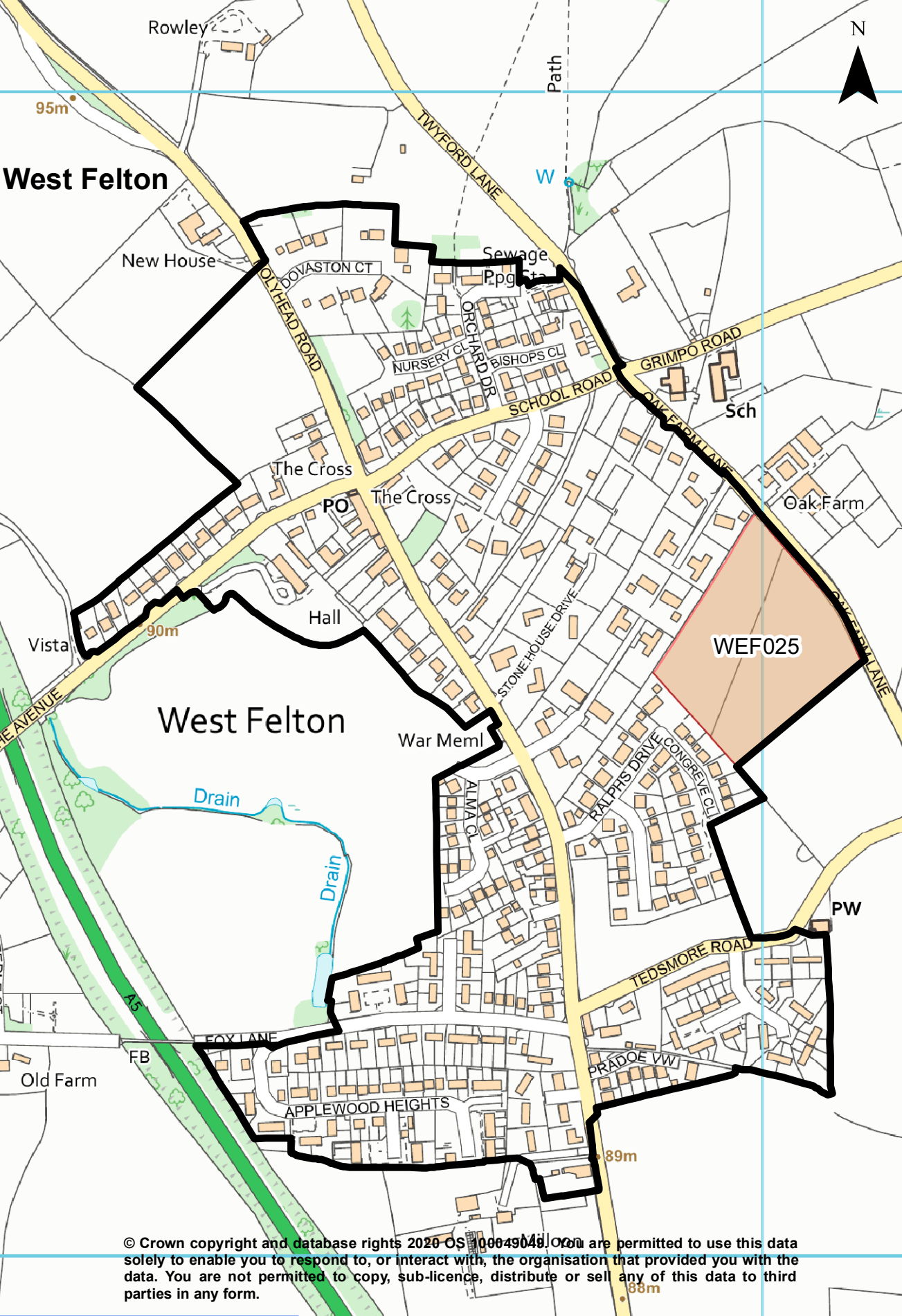
EG

174m

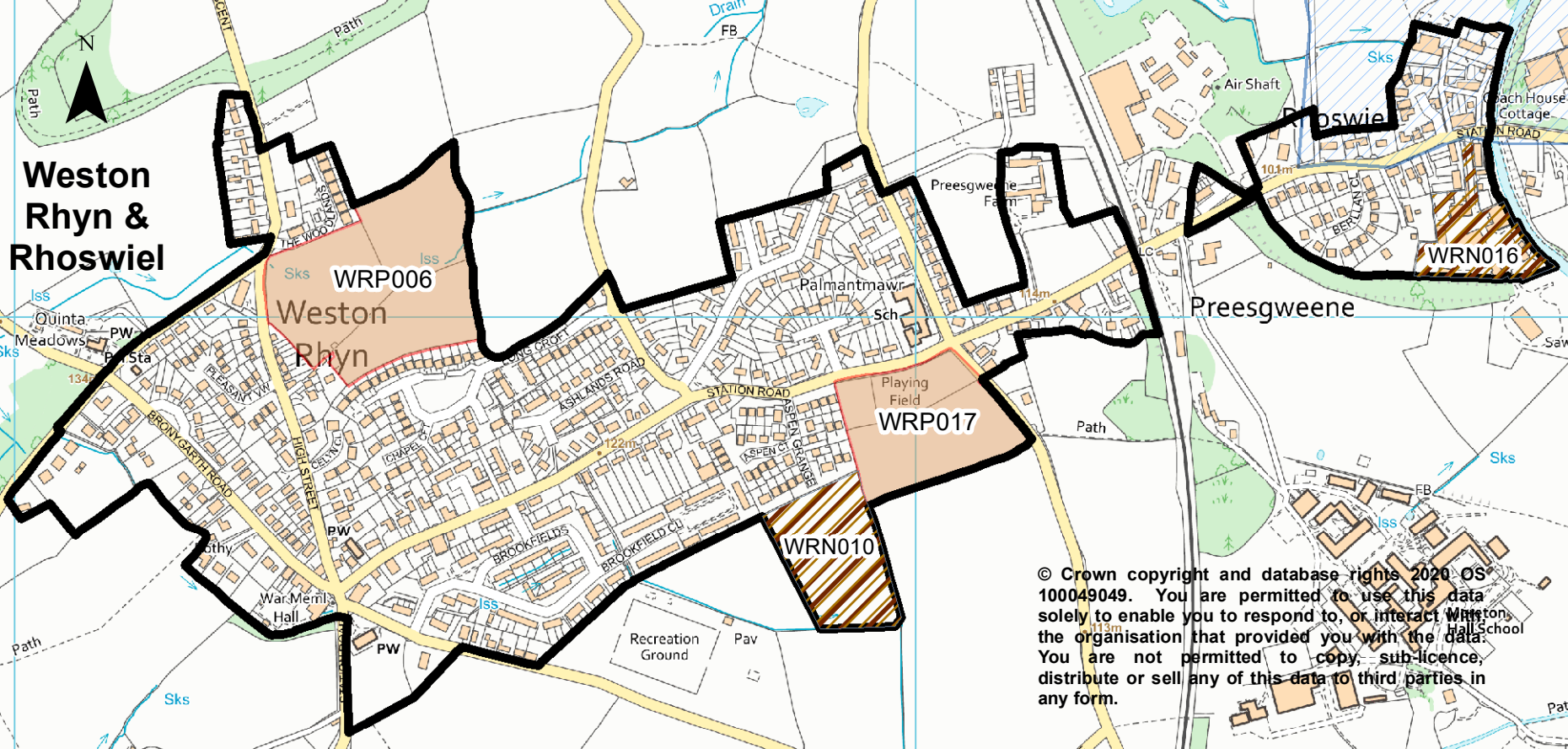
WACH ROAD

Pentre Farm

© Crown copyright and database rights 2020 OS 100049049. You are permitted to use this data solely to enable you to respond to, or interact with, the organisation that provided you with the data. You are not permitted to copy, sub-licence, distribute or sell any of this data to third parties in any form.



Weston Rhyn & Rhoswiel

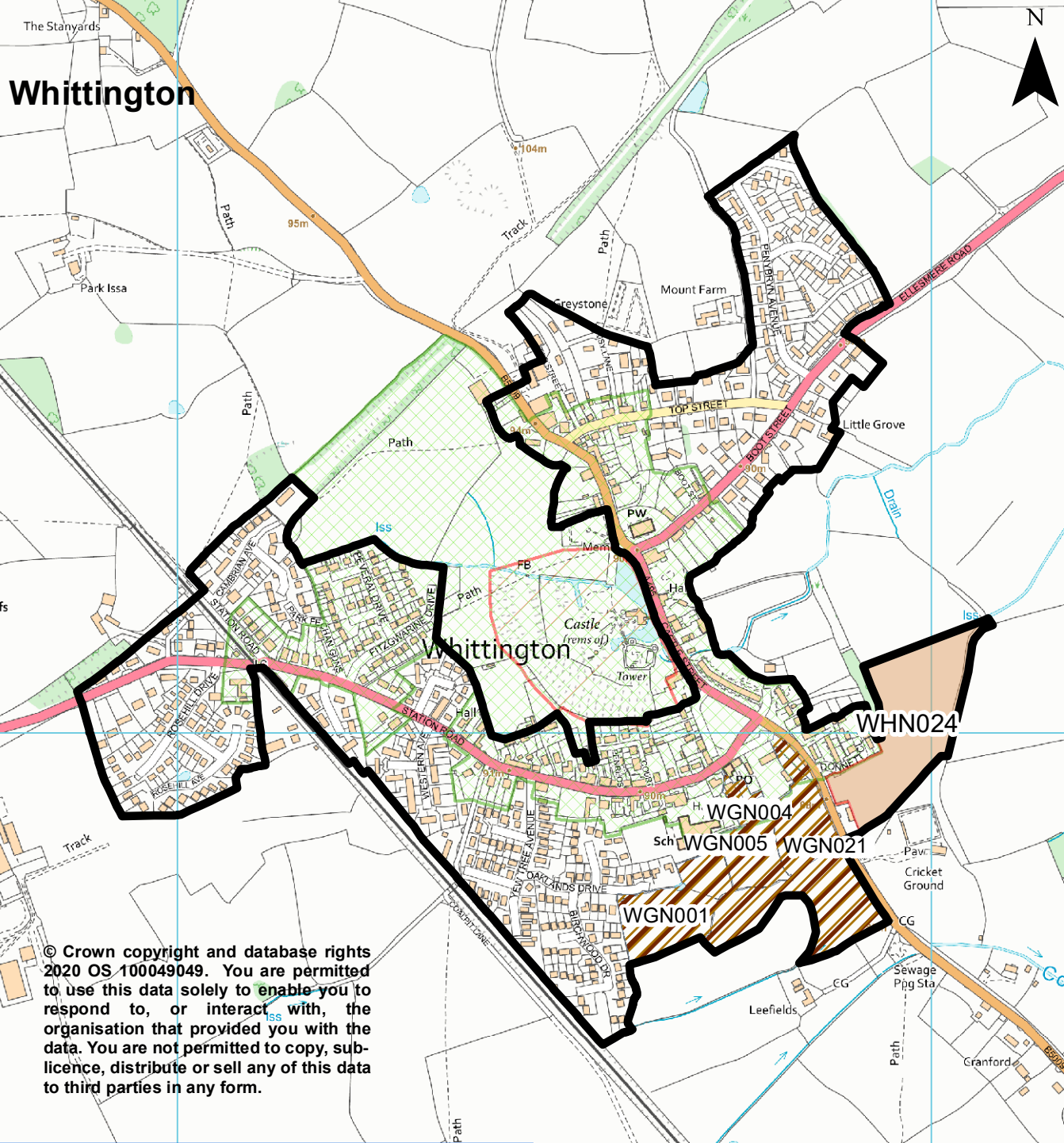


© Crown copyright and database rights 2020 OS 100049049. You are permitted to use this data solely to enable you to respond to, or interact with, the organisation that provided you with the data. You are not permitted to copy, sub-licence, distribute or sell any of this data to third parties in any form.



The Stanyards

Whittington



© Crown copyright and database rights 2020 OS 100049049. You are permitted to use this data solely to enable you to respond to, or interact with, the organisation that provided you with the data. You are not permitted to copy, sub-licence, distribute or sell any of this data to third parties in any form.