

**SHROPSHIRE COUNCIL**  
**(OFF-STREET PARKING PLACES) ORDER 2011**  
**(AMENDMENT NO. ) ORDER**

Shropshire Council (hereinafter called “the Council”) in exercise of its powers under Sections 32, 35 and Part IV of Schedule 9 of the Road Traffic Regulation Act 1984, as amended (“the 1984 Act”) and of all other enabling powers and after consultation with the Chief Officer of Police in accordance with Part III of Schedule 9 to the 1984 Act, hereby makes the following Order:

1. This order shall come into operation on     and may be cited as the Shropshire Council (Off-Street Parking Places) Order 2011 (Amendment No. ) Order
  
2. The Shropshire Council (Off-Street Parking Places) Order 2011 is amended as follows:
  - a) Schedules 1 to 9 are revoked:
  
  - b) New Schedules 1 to 4 are added, as set out in the Schedule to this order.
  
3. The prohibitions and restrictions imposed by this Order shall be in addition to and not in derogation from any restriction or requirement imposed by any regulation made or having effect as if made under the Act or by or under any other enactment.

THE COMMON SEAL of THE    )  
SHROPSHIRE COUNCIL was    )  
affixed hereto the day of    )  
in the presence of:   )

THE SHROPSHIRE COUNCIL (OFF STREET PARKING PLACES) ORDER 2011

SCHEDULE 1

OFF-STREET PARKING PLACES – HOURLY TICKET TARIFF RATES

Column 1	Column 2	Column 3	Column 4	Column 5	Column 6	Column 7	Column 8	Column 9	Column 10	Column 11	Column 12	Column 13
Band Level	Name of Parking Place	Town	Days and hours of operation (of a Parking Place)	Daytime Charges per hour 08.00 to 18.00 Mon-Sat Unless stated otherwise	Evening Charges Entire Period 18.00 to 22.00 Mon-Sun Unless stated otherwise	Sunday, Bank and Public Holiday Charges per hour 08.00 to 18.00 Unless stated otherwise	Maximum Number of hours a vehicle may be left in a parking place	Minimum Charge All Days 08.00 to 18.00 All Evenings (if applies) 18.00-22.00 £1.00 Unless stated otherwise	Capped Charges (daytime)	Capped Charges (evenings)	Capped Charges (Sunday)	Special Conditions
Band 1	n/a (reserved for Shrewsbury on-street)											
Band 2	Bridge Street Car Park (Pay and Display)	Shrewsbury	All days, all hours	£2.80	£1.00	£1.40	n/a	30 minutes	n/a	n/a	n/a	

Band 2	St Austin's Street Car Park (Pay and Display)	Shrewsbury	All days, all hours	£2.80	£1.00	£1.40	n/a	30 minutes	n/a	n/a	n/a	
Band 2	Quarry Swimming & Fitness Centre Car Park (Pay and Display)	Shrewsbury	All days, all hours	£2.80	£1.00	£1.40	n/a	30 minutes	n/a	n/a	n/a	
Band 2	Raven Meadows multi storey - Car Park (Pay on Foot)	Shrewsbury	All days, all hours	£2.40	Mon to Sat 18.00-08.00 £2.40	00.00-23.59 £2.40	n/a	30 minutes	n/a	2 hours (£4.80)	1 hour (£2.40)	Maximum Height 2.20 m
Band 3	St Julian's Friars Car Park (Pay and Display)	Shrewsbury	All days, all hours	£1.60	£1.00	£0.80	n/a	1 hour	n/a	n/a	n/a	Maximum Height 2.20 m
Band 4	Frankwell Main Car Park (Pay and Display)	Shrewsbury	All days, all hours	£1.20	£1.00	£1.20	n/a	1 hour	n/a	n/a	1 hour (£1.20)	

Band 5	Frankwell Quay Car Park (Pay and Display)	Shrewsbury	All days, all hours	£1.20	£1.00	£1.20	n/a	1 hour	n/a	n/a	1 hour (£1.20)	
Band 5	Frankwell Riverside Car Park (Pay and Display)	Shrewsbury	All days, all hours	£1.20	£1.00	£1.20	3 hours	1 hour	n/a	n/a	1 hour (£1.20)	
Band 5	Riverside Car Park (Pay and Display)	Bridgnorth	All days, all hours	£1.00	n/a	£1.00	n/a	1 hour	8 hours (£8.00)	n/a	1 hour (£1.00)	
Band 6	Riverside West Elevated Car Park (Resident)	Bridgnorth	All days, all hours	RESIDENT ONLY								
Band 6	Back Lane Car Park (Pay and Display)	Much Wenlock	All days, all hours	£1.00	n/a	£1.00	n/a	1 hour	8 hours (£8.00)	n/a	1 hour (£1.00)	

Band 7	n/a (reserved for Ludlow on-street)										
Band 8a	n/a (reserved for Ellesmere on-street)										
Band 8b	Listley Street North and South Car Park (Pay and Display)	Bridgnorth	All days, all hours	£1.40	n/a	£0.70	n/a	1 hour	n/a	n/a	n/a
Band 8b	Sainsbury's Car Park (Pay and Display)	Bridgnorth	All days, all hours	£1.40	n/a	£0.70	n/a	1 hour	n/a	n/a	n/a
Band 8b	Castle Street Car Park (Pay and Display)	Ludlow	All days, all hours	£1.40	n/a	£0.70	n/a	1 hour	n/a	n/a	n/a

Band 8b	Festival Square Car Park (Pay and Display)	Oswestry	All days, all hours	£1.40	n/a	£0.70	n/a	1 hour	n/a	n/a	n/a	
Band 8b	Abbey Foregate Car Park, HGV and Coach Park (Pay and Display)	Shrewsbury	All days, all hours	£0.80	£1.00	£0.80	n/a	1 hour	n/a	n/a	1 hour (£0.80)	Maximum Height 2.20 m  (Excluding coaches and HGV)
Band 9	Galdeford Zone A Car Park (Pay and Display)	Ludlow	All days, all hours	£0.80	n/a	£0.80	n/a	1 hour	8 hours (£5.60)	n/a	1 hour (£0.80)	
Band 9	Castle Hill Car Park (Pay and Display)	Whitchurch	All days, all hours	£0.80	n/a	£0.80	n/a	1 hour	8 hours (£5.60)	n/a	1 hour (£0.80)	
Band 9	Pepper Street Car Park (Pay and Display)	Whitchurch	All days, all hours	£0.80	n/a	£0.80	n/a	1 hour	8 hours (£5.60)	n/a	1 hour (£0.80)	

Band 9	Easthope Road Car Park (Pay and Display)	Church Stretton	All days, all hours	£0.80	n/a	£0.80	n/a	1 hour	8 hours (£5.60)	n/a	1 hour (£0.80)	
Band 9	St Mary's Lane Car Park (Pay and Display)	Much Wenlock	All days, all hours	£0.80	n/a	£0.80	n/a	1 hour	8 hours (£5.60)	n/a	1 hour (£0.80)	
Band 9	Frogmore Road Car Park (Pay and Display)	Market Drayton	All days, all hours	£0.80	n/a	£0.80	n/a	1 hour	8 hours (£5.60)	n/a	1 hour (£0.80)	
Band 9	Queen Street Car Park (Pay and Display)	Market Drayton	All days, all hours	£0.80	n/a	£0.80	n/a	1 hour	8 hours (£5.60)	n/a	1 hour (£0.80)	
Band 9	Shirehall Staff and Visitor overflow car park, London Road	Shrewsbury	8am - 6pm Monday to Friday	£0.80	n/a	£0.80	n/a	1 hour	8 hours (£5.60)	n/a	1 hour (£0.80)	Maximum Height 2.10 m

Band 10	Severn Street Car Park  (Pay and Display)  (see Table 2 for HGV and Coach Park details)	Bridgnorth	All days, all hours	£0.60	n/a	£0.60	n/a	1 hour	8 hours (£4.80)	n/a	1 hour (£0.60)	
Band 10	Innage Lane Car Park (HGV and Coach Park) (Pay and Display)	Bridgnorth	All days, all hours	£0.60	n/a	£0.60	n/a	1 hour	8 hours (£4.80)	n/a	1 hour (£0.60)	
Band 10	Galdeford Zone B Car Park (Pay and Display)	Ludlow	All days, all hours	£0.60	n/a	£0.60	n/a	1 hour	8 hours (£4.80)	n/a	1 hour (£0.60)	
Band 10	Smithfield Car Park (HGV and Coach Park) (Pay and Display)	Ludlow	All days, all hours	£0.60	n/a	£0.60	n/a	1 hour	8 hours (£4.80)	n/a	1 hour (£0.60)	
Band 10	Falcons Court Car Park (Pay and Display)	Much Wenlock	All days, all hours	£0.60	n/a	£0.60	n/a	1 hour	8 hours (£4.80)	n/a	1 hour (£0.60)	



Band 10	New Road Car Park (Pay and Display)	Much Wenlock	All days, all hours	£0.60	n/a	£0.60	n/a	1 hour	8 hours (£4.80)	n/a	1 hour (£0.60)	
Band 10	Crossways HGV, Coach, and Car Park	Church Stretton	All days, all hours	£0.60	n/a	£0.60	n/a	1 hour	8 hours (£4.80)	n/a	1 hour (£0.60)	
Band 10	Cross Street, Talbot Street and Spar Bridge Car Park (Pay and Display)	Ellesmere	All days, all hours	£0.60	n/a	£0.60	n/a	1 hour	8 hours (£4.80)	n/a	1 hour (£0.60)	
Band 10	Towers Lawn 1 and 2 Car Park (Pay and Display)	Market Drayton	All days, all hours	£0.60	n/a	£0.60	n/a	1 hour	8 hours (£4.80)	n/a	1 hour (£0.60)	
Band 10	Prees Heath Car Park (HGV and Coach Park) (Pay and Display)	Prees Heath	All days, all hours	£0.60	n/a	£0.60	n/a	1 hour	8 hours (£4.80)	n/a	1 hour (£0.60)	

Band 10	Leek Street Car Park (Pay and Display)	Wem	All days, all hours	£0.60	n/a	£0.60	n/a	1 hour	8 hours (£4.80)	n/a	1 hour (£0.60)	
Band 10	High Street Car Park (Pay and Display)	Wem	All days, all hours	£0.60	n/a	£0.60	n/a	1 hour	8 hours (£4.80)	n/a	1 hour (£0.60)	
Band 10	Mill Street Car Park (Pay and Display)	Wem	All days, all hours	£0.60	n/a	£0.60	n/a	1 hour	8 hours (£4.80)	n/a	1 hour (£0.60)	Maximum Height 2.20 m
Band 10	Newtown Car Park (Pay and Display)	Whitchurch	All days, all hours	£0.60	n/a	£0.60	n/a	1 hour	8 hours (£4.80)	n/a	1 hour (£0.60)	
Band 10	St John's Street Car Park (Pay and Display)	Whitchurch	All days, all hours	£0.60	n/a	£0.60	n/a	1 hour	8 hours (£4.80)	n/a	1 hour (£0.60)	















Band 5	Frankwell Riverside Car Park (Pay and Display)	Shrewsbury	n/a	n/a	n/a	n/a	n/a	n/a	n/a	n/a	n/a	n/a	n/a	n/a	n/a	n/a	
Band 6	Riverside Car Park (Pay and Display)	Bridgnorth	n/a	n/a	n/a	n/a	n/a	n/a	n/a	n/a	n/a	n/a	n/a	n/a	n/a	n/a	
Band 6	Riverside West Elevated Car Park (Resident)	Bridgnorth	RESIDENT ONLY											560.00	8		
Band 6	Back Lane Car Park (Pay and Display)	Much Wenlock	35.00	116.00	300.00	496.00	800.00	n/a	n/a	n/a	n/a	n/a	n/a	n/a	640.00	3	
Band 7	n/a (reserved for Ludlow on-street)		n/a														





Band 9	St Mary's Lane Car Park (Pay and Display)	Much Wenlock	28.00	92.80	240.00	396.80	640.00	n/a	n/a	n/a	n/a	n/a	n/a	512.00	19
Band 9	Frogmore Road Car Park (Pay and Display)	Market Drayton	28.00	92.80	240.00	396.80	640.00	n/a	n/a	n/a	n/a	n/a	n/a	512.00	29
Band 9	Queen Street Car Park (Pay and Display)	Market Drayton	28.00	92.80	240.00	396.80	640.00	n/a	n/a	n/a	n/a	n/a	n/a	512.00	51
Band 9	Shirehall Staff and Visitor overflow car park, London Road	Shrewsbury	28.00	92.80	240.00	396.80	640.00	n/a	n/a	n/a	n/a	n/a	n/a	512.00	61
Band 10	Severn Street Car Park (Pay and Display)	Bridgnorth	21.00	69.60	180.00	297.60	480.00	10.00	105.00	270.00	450.00	720.00	Free	384.00	50















Band 11	Lloyd Street Car Park	Oswestry	n/a	n/a	n/a	n/a	n/a	n/a	n/a	n/a	n/a	n/a	n/a	n/a	n/a	n/a
Band 11	Gatacre - Car Park	Oswestry	n/a	n/a	n/a	n/a	n/a	n/a	n/a	n/a	n/a	n/a	n/a	n/a	n/a	n/a
Band 11	Church Street Car Park	Prees	n/a	n/a	n/a	n/a	n/a	n/a	n/a	n/a	n/a	n/a	n/a	n/a	n/a	n/a
Band 11	Sherrymill Hill Car Park	Whitchurch	n/a	n/a	n/a	n/a	n/a	n/a	n/a	n/a	n/a	n/a	n/a	n/a	n/a	n/a

NOTE – Shrewsbury Off-Street Resident Permits. Abbey Foregate, Frankwell Main and St Julians Friars Resident Permits are only available to residents of specified addresses for each car park. Residents of another group of central addresses are able to choose which car park they use and thereafter must only use that car park.

### SCHEDULE 3

#### OFF-STREET PARKING PLACES - TARIFF RATES FOR NON-STANDARD CAR PARKS

Car Park	Days/Hours of operation	Charging Times	Charges	Minimum Fee	Season ticket	Resident Permit	Special Conditions
Severn Park Bridgnorth	All Days, All Hours	1 April - 30 September 7.30am - 8.30pm Every day including Bank and Public Holidays	Up to 2hrs: £1.65 Up to 4hrs: £2.20 Up to 13 hours: £2.75	1 hour	12 months £146	12 months £64	n/a
		1 October - 31 March 7.30am - 4.30pm Every day including Bank and Public Holidays	Up to 2hrs: £1.65 Up to 4hrs: £2.20 Up to 9hrs: £2.75				
Lutwyche Road Church Stretton	All Days, All Hours	8am - 6pm Every day including Bank and Public Holidays	Up to 1hr: £0.60 Up to 2hrs: £1.20 Up to 4hrs: £3.00 Up to 10hrs: £4.50	1 hour	n/a	n/a	n/a
The Square Church Stretton	Mon-Sat, 8am to 6pm	n/a	Free	n/a	n/a	n/a	Maximum Stay 2 hours No Return 2 hours
The Moors Ellesmere	All Days, All Hours	8am - 5.30pm Every day including Bank and Public Holidays	Up to 9hrs 30 mins: £3.00	1 hour	n/a	n/a	n/a
Castle Fields Ellesmere	All Days, All Hours	8am - 5.30pm Every day including Bank and Public Holidays	Up to 9hrs 30 mins: £3.00	1 hour	n/a	n/a	n/a
Shirehall Shrewsbury	Mon-Fri 8am to 6pm	n/a	Free	n/a	n/a	n/a	n/a
Meole Brace Park and Ride Shrewsbury	All Days, All Hours Locked Overnight	n/a	Free	n/a	n/a	n/a	Height <2.2 metres
Harlescott Park and Ride Shrewsbury	All Days, All Hours Locked Overnight	n/a	Free	n/a	n/a	n/a	Height <2.2 metres

Oxon Park and Ride Shrewsbury	All Days, All Hours Locked Overnight	n/a	Free	n/a	n/a	n/a	Height <2.2 metres
ECO Park Park and Ride Ludlow	All Days, All Hours Locked Overnight	n/a	Free	n/a	n/a	n/a	n/a
Tilstock Lane, Tilstock	All Days, All Hours	24 hours, All Days	Free	n/a	n/a	n/a	n/a
Crown Hotel, Albrighton	All Days, All Hours	24 hours, All Days	Free	n/a	n/a	n/a	n/a
Aston Street, Shifnal	All Days, All Hours	24 hours, All Days	Free	n/a	n/a	n/a	Coaches and HGVs
Kings Yard, Shifnal	All Days, All Hours	24 hours, All Days	Free	n/a	n/a	n/a	n/a

## SCHEDULE 4

### RESIDENT PERMITS – GEOGRAPHICAL ENTITLEMENT LIMITS

Parking Places available within each area/scheme and geographical eligibility criteria for Permits

All references to Schedule 6 in the plans must be read as Schedule 4, this schedule.

All references to Schedule 5 in the plans must be read as Schedule 2, Tariff Rate For Weekly Ticket, Season Ticket And Permits

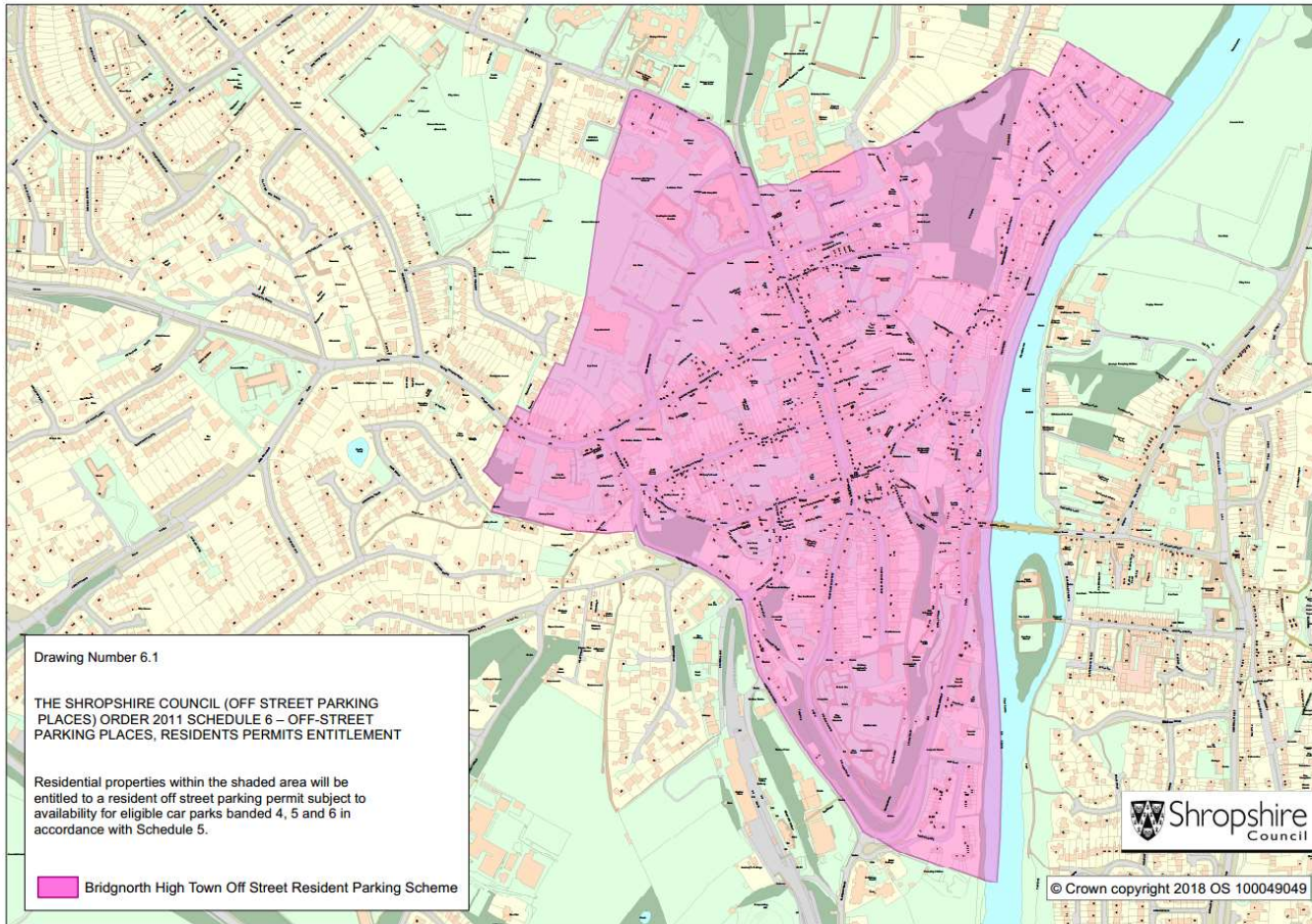
Name of Parking Place	Off Street Resident Parking Scheme	Refer to Drawing Number
Cross Street, Talbot Street and Sparbridge Car Park (Pay and Display)	Ellesmere Off Street Resident Parking Scheme	6.5

Oak Street Car Park (Pay and Display)	Oswestry	6.9
Oswald Road Car Park (HGV and Coach Park) (Pay and Display)		
Abbey Foregate Car Park, HGV and Coach Park (Pay and Display)	Shrewsbury Abbey Foregate	6.11
Frankwell Main Car Park (Pay and Display)	Shrewsbury Frankwell Main	6.12
Abbey Foregate Car Park, HGV and Coach Park (Pay and Display)	Shrewsbury Town Centre	6.13
Frankwell Main Car Park (Pay and Display)		
St Julian's Friars Car Park (Pay and Display)*		
Galdeford Zone A Car Park (Pay and Display)	Ludlow	6.6
Galdeford Zone B Car Park (Pay and Display)		
Smithfield Car Park (HGV and Coach Park) (Pay and Display)		
Innage Lane Car Park (HGV and Coach Park) (Pay and Display)	Bridgnorth High Town Off-Street Resident Parking Scheme	6.1
Severn Street Car Park (HGV and Coach Park) (Pay and Display)	Bridgnorth Low Town Off Street Resident Parking Scheme	6.2

Riverside West Elevated Car Park	Bridgnorth Riverside West Elevated Off Street Resident Parking Scheme	6.3
Easthope Road Car Park (Pay and Display)	Church Stretton Off Street Resident Parking Scheme	6.4
Crossways HGV, Coach, and Car Park	Church Stretton Off Street Resident Parking Scheme	6.4
Back Lane Car Park (Pay and Display)		
St Mary's Lane Car Park (Pay and Display)		
Falcons Court Car Park (Pay and Display)	Much Wenlock	6.8
New Road Car Park (Pay and Display)		
High Street Car Park (Pay and Display)		
Mill Street Car Park (Pay and Display)	Wem	6.14
Leek Street Car Park (Pay and Display)		
Frogmore Road Car Park (Pay and Display)		
Queen Street Car Park (Pay and Display)	Market Drayton	6.7
Towers Lawn 1 and 2 Car Park (Pay and Display)		
Prees Heath Car Park (HGV and Coach Park) (Pay and Display)	Prees Heath	6.1

Brownlow Street Car Park (Pay and Display)	Whitchurch	6.15
Castle Hill Car Park (Pay and Display)		
Newtown Car Park (Pay and Display)		
Pepper Street Car Park (Pay and Display)		
St John's Street Car Park (Pay and Display)		
Shirehall Staff and Visitor overflow car park, London Road	Shrewsbury London Road	6.16





Drawing Number 6.1

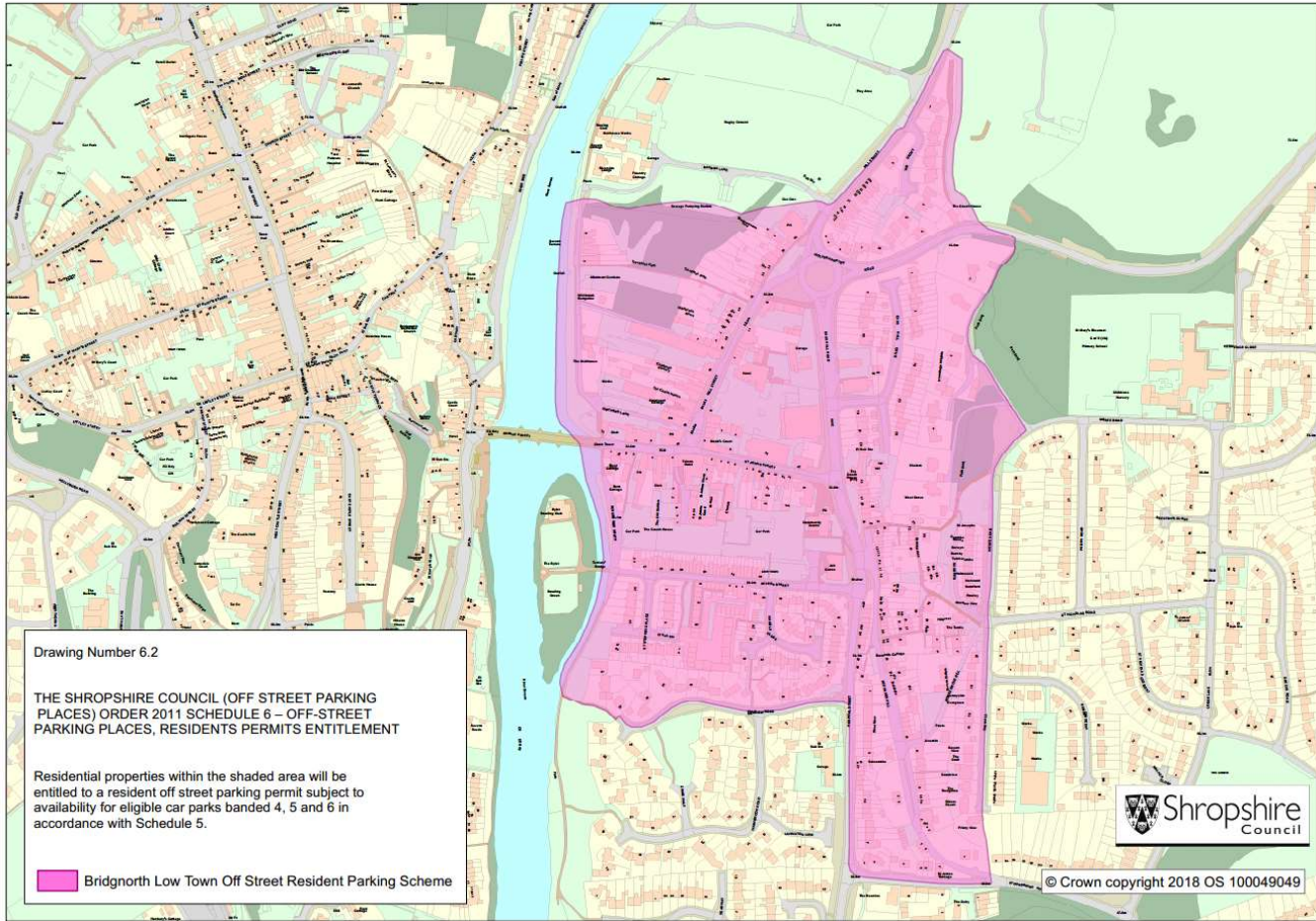
THE SHROPSHIRE COUNCIL (OFF STREET PARKING PLACES) ORDER 2011 SCHEDULE 6 – OFF-STREET PARKING PLACES, RESIDENTS PERMITS ENTITLEMENT

Residential properties within the shaded area will be entitled to a resident off street parking permit subject to availability for eligible car parks banded 4, 5 and 6 in accordance with Schedule 5.

 Bridgnorth High Town Off Street Resident Parking Scheme




© Crown copyright 2018 OS 100049049



Drawing Number 6.2

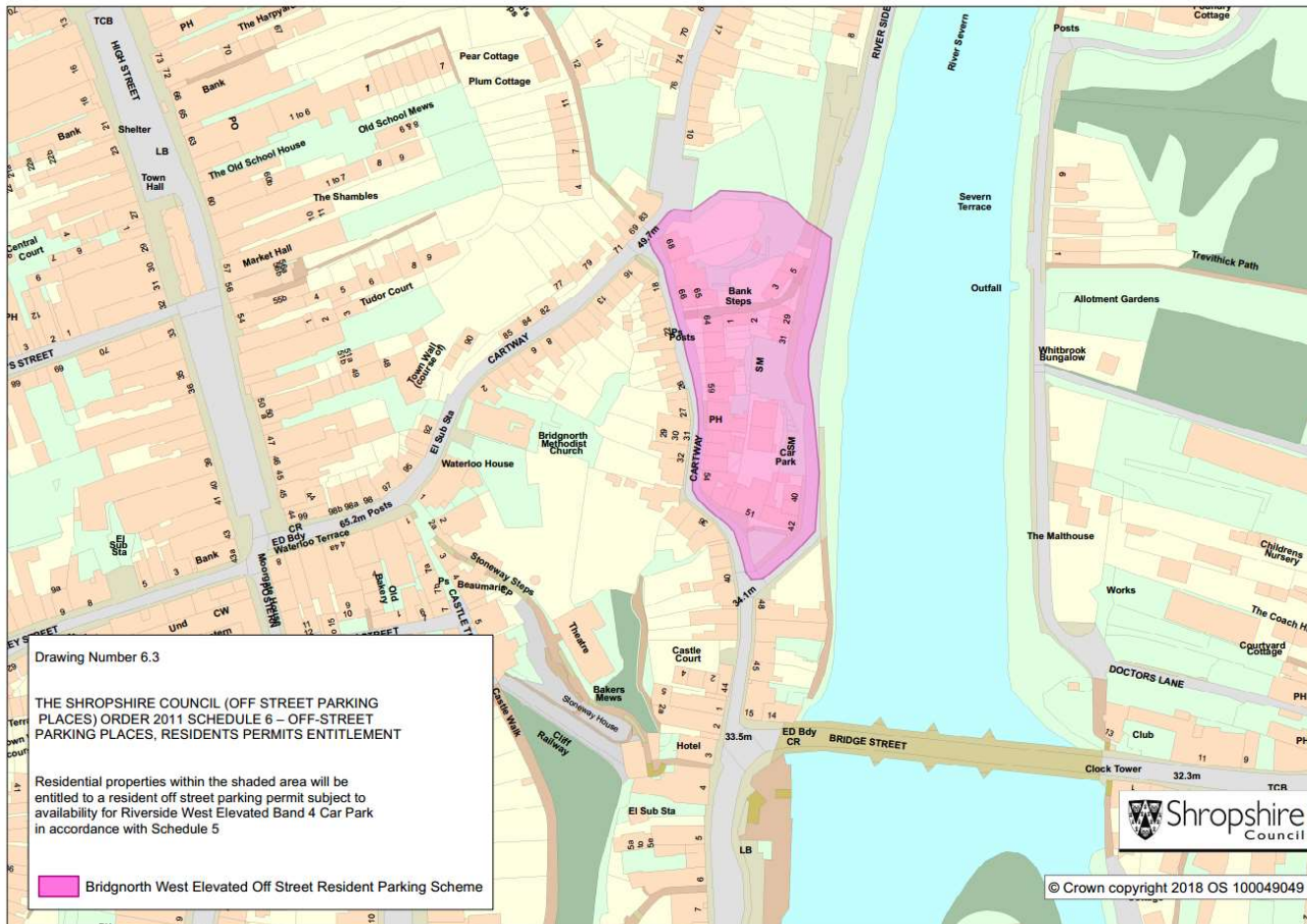
**THE SHROPSHIRE COUNCIL (OFF STREET PARKING PLACES) ORDER 2011 SCHEDULE 6 – OFF-STREET PARKING PLACES, RESIDENTS PERMITS ENTITLEMENT**

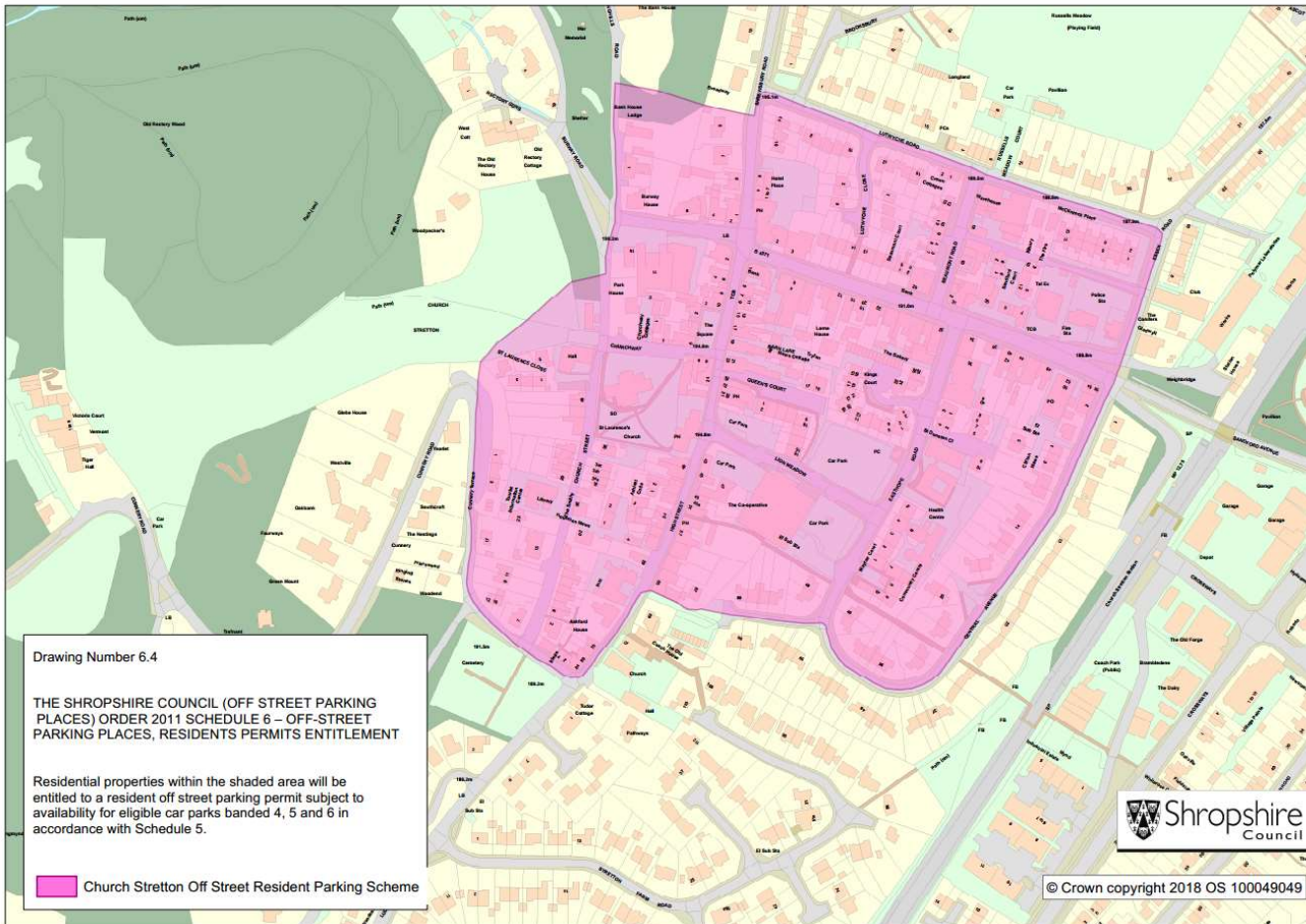
Residential properties within the shaded area will be entitled to a resident off street parking permit subject to availability for eligible car parks banded 4, 5 and 6 in accordance with Schedule 5.

 Bridgnorth Low Town Off Street Resident Parking Scheme



© Crown copyright 2018 OS 100049049





Drawing Number 6.4

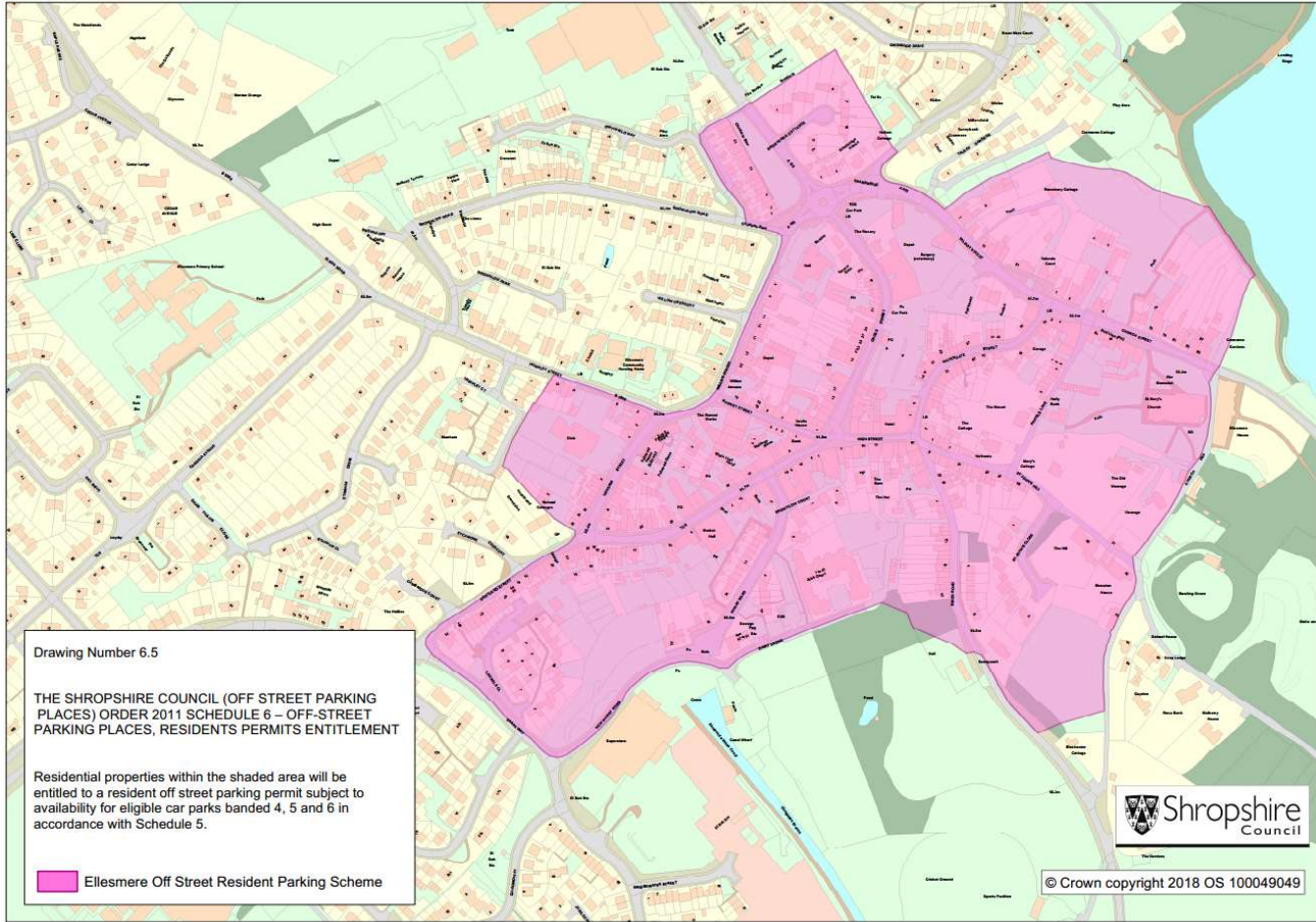
THE SHROPSHIRE COUNCIL (OFF STREET PARKING PLACES) ORDER 2011 SCHEDULE 6 – OFF-STREET PARKING PLACES, RESIDENTS PERMITS ENTITLEMENT

Residential properties within the shaded area will be entitled to a resident off street parking permit subject to availability for eligible car parks banded 4, 5 and 6 in accordance with Schedule 5.

 Church Stretton Off Street Resident Parking Scheme



© Crown copyright 2018 OS 100049049



Drawing Number 6.5

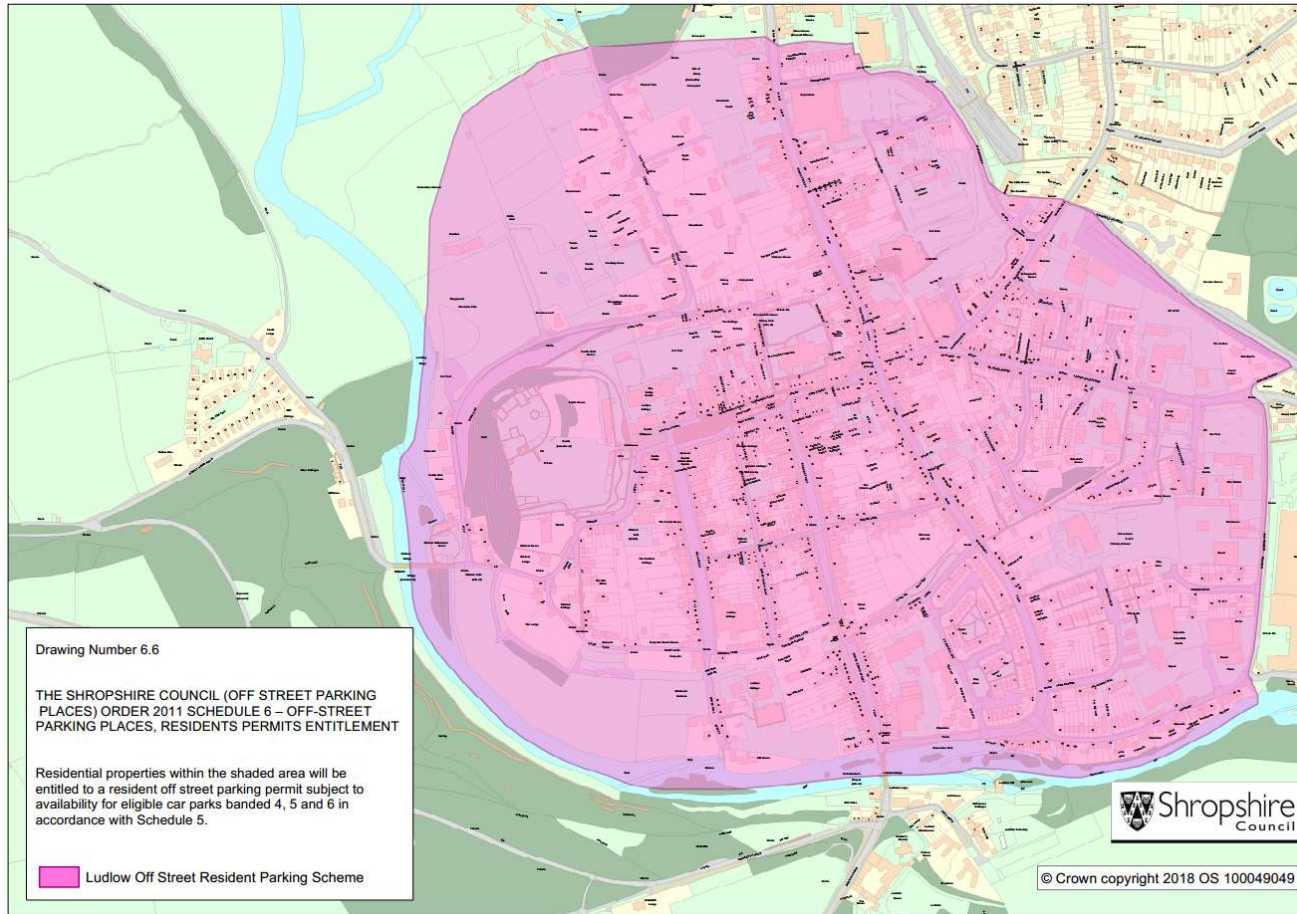
**THE SHROPSHIRE COUNCIL (OFF STREET PARKING PLACES) ORDER 2011 SCHEDULE 6 – OFF-STREET PARKING PLACES, RESIDENTS PERMITS ENTITLEMENT**

Residential properties within the shaded area will be entitled to a resident off street parking permit subject to availability for eligible car parks banded 4, 5 and 6 in accordance with Schedule 5.

 Ellesmere Off Street Resident Parking Scheme



© Crown copyright 2018 OS 100049049



Drawing Number 6.6

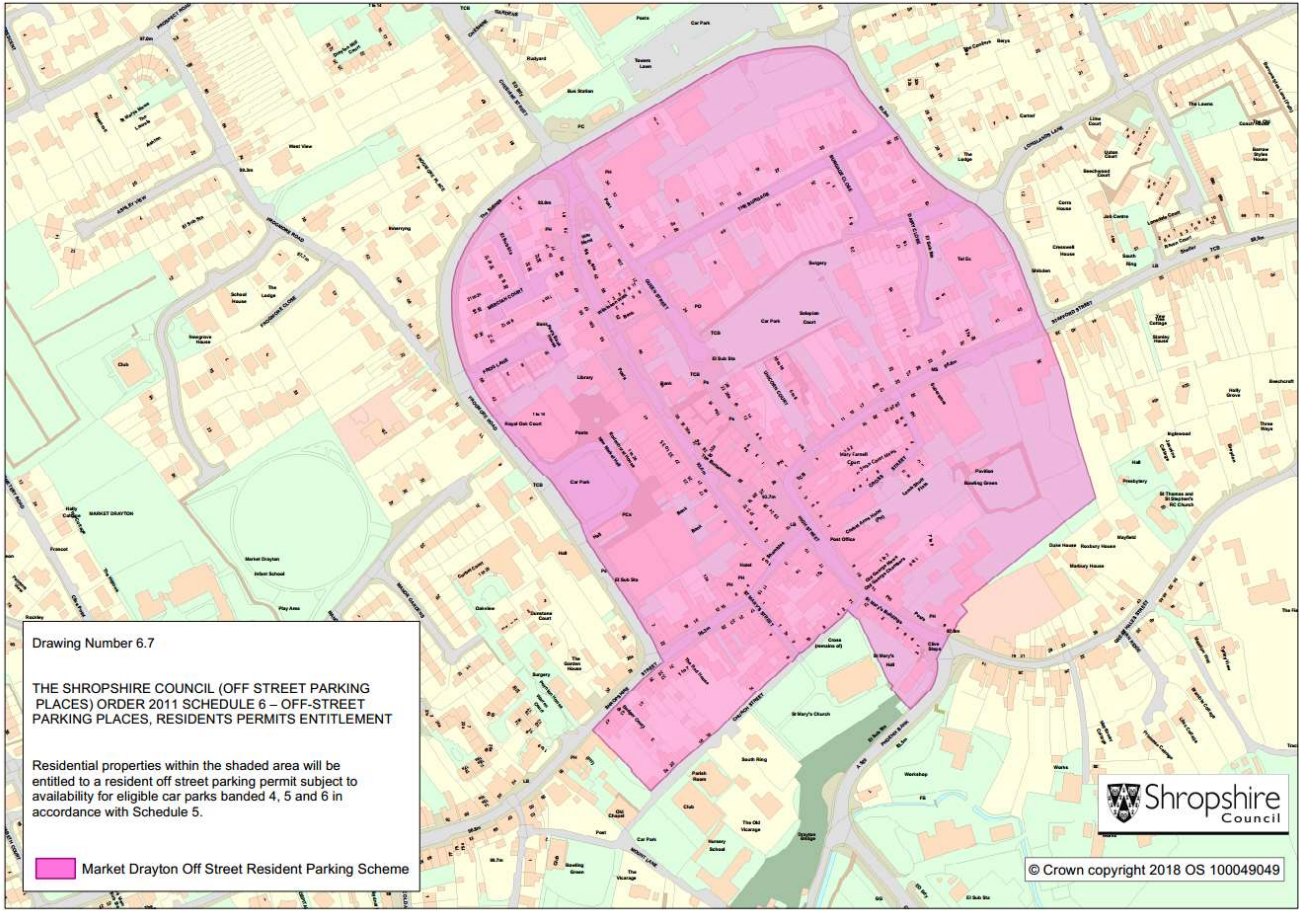
**THE SHROPSHIRE COUNCIL (OFF STREET PARKING PLACES) ORDER 2011 SCHEDULE 6 – OFF-STREET PARKING PLACES, RESIDENTS PERMITS ENTITLEMENT**

Residential properties within the shaded area will be entitled to a resident off street parking permit subject to availability for eligible car parks banded 4, 5 and 6 in accordance with Schedule 5.

 Ludlow Off Street Resident Parking Scheme



© Crown copyright 2018 OS 100049049



Drawing Number 6.7

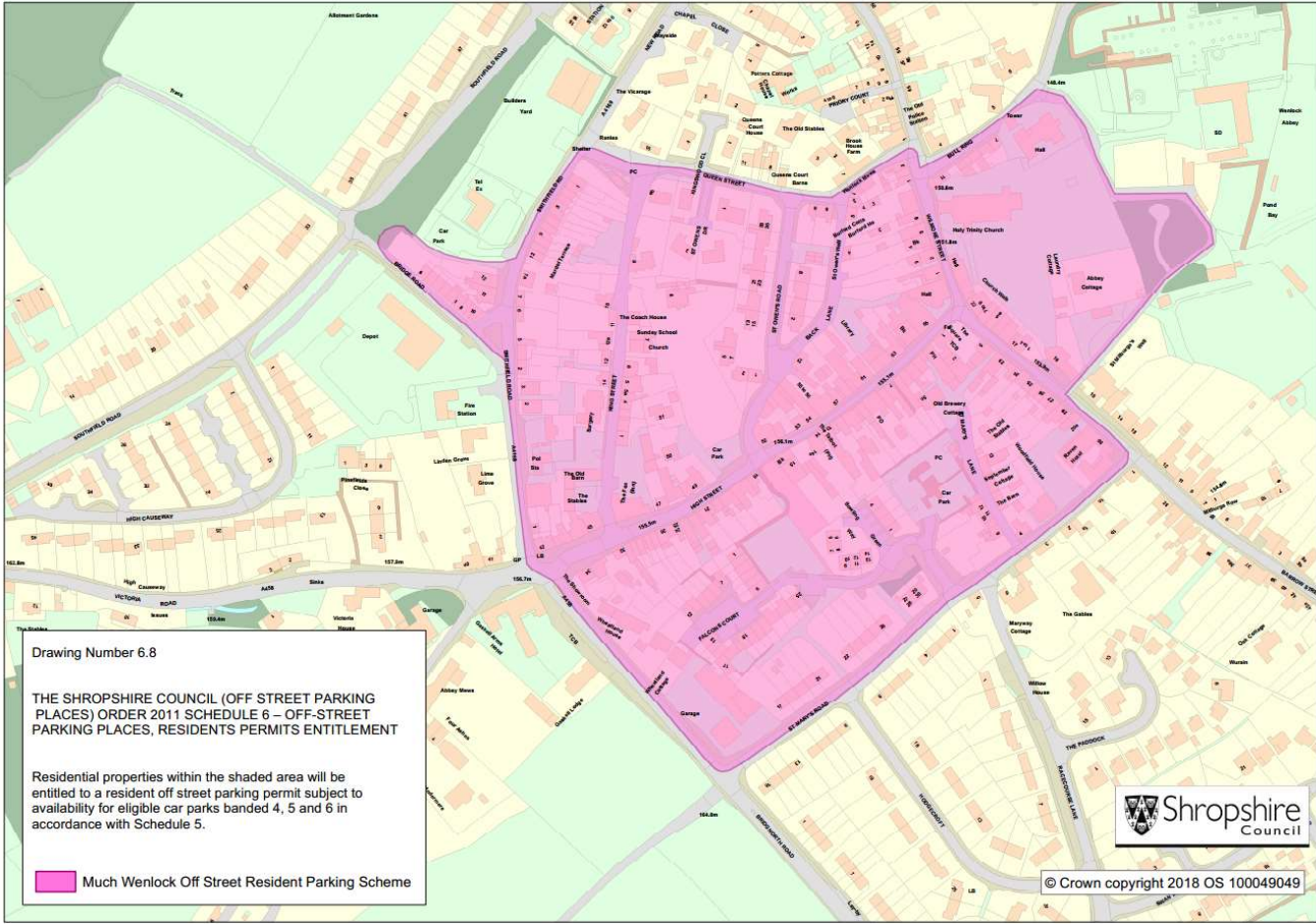
**THE SHROPSHIRE COUNCIL (OFF STREET PARKING PLACES) ORDER 2011 SCHEDULE 6 – OFF-STREET PARKING PLACES, RESIDENTS PERMITS ENTITLEMENT**

Residential properties within the shaded area will be entitled to a resident off street parking permit subject to availability for eligible car parks banded 4, 5 and 6 in accordance with Schedule 5.

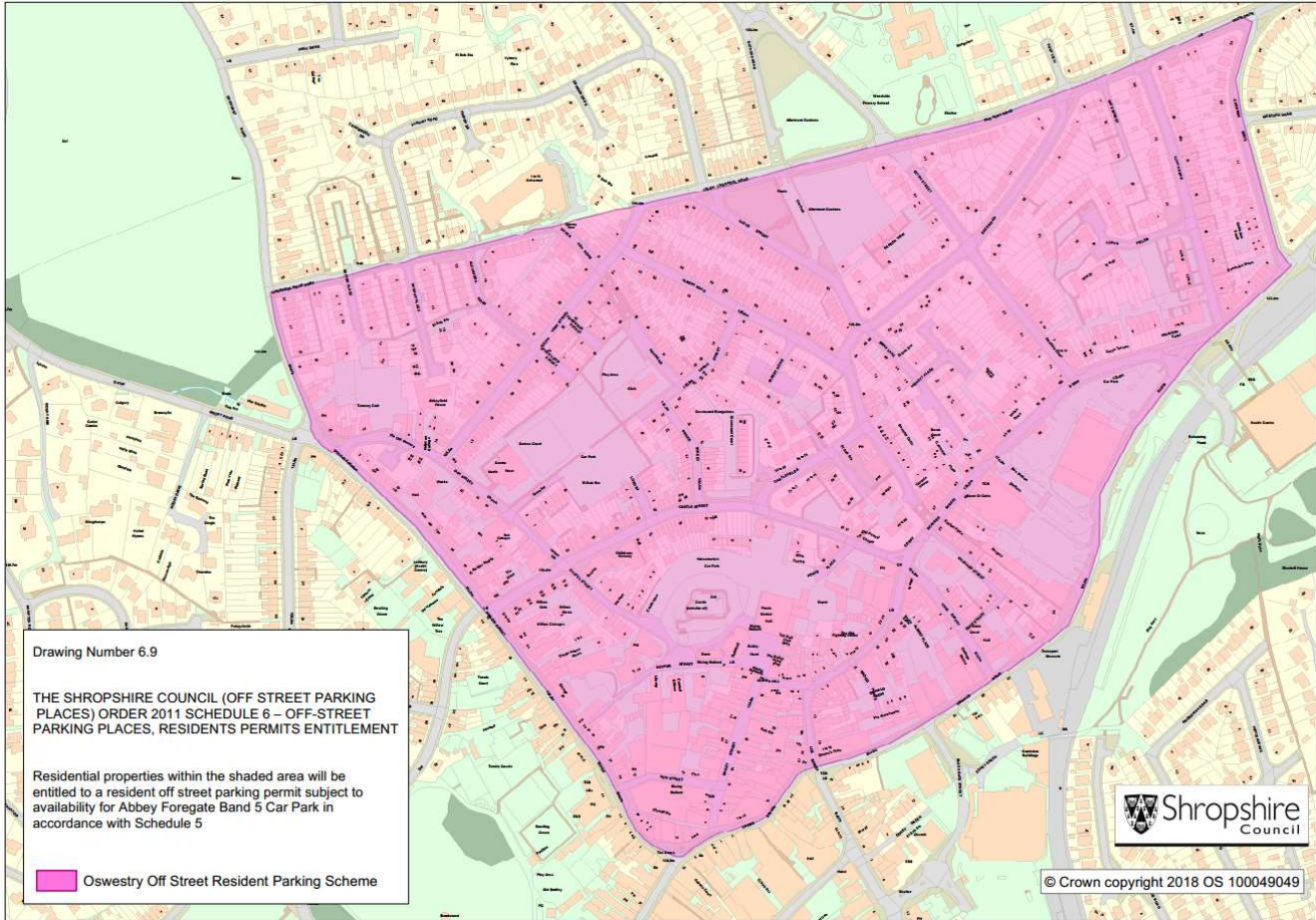
 Market Drayton Off Street Resident Parking Scheme



© Crown copyright 2018 OS 100049049







Drawing Number 6.9

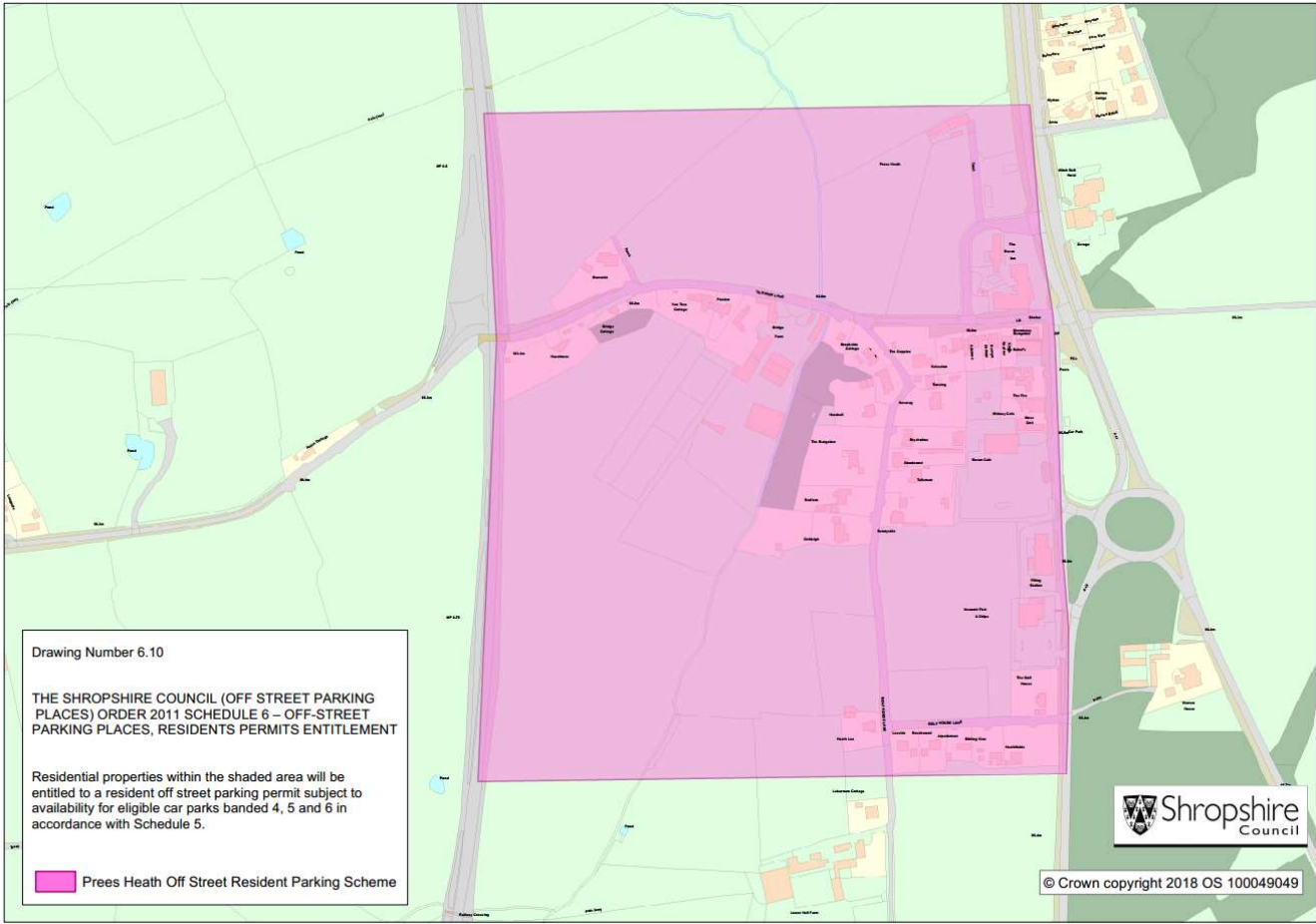
THE SHROPSHIRE COUNCIL (OFF STREET PARKING PLACES) ORDER 2011 SCHEDULE 6 – OFF-STREET PARKING PLACES, RESIDENTS PERMITS ENTITLEMENT

Residential properties within the shaded area will be entitled to a resident off street parking permit subject to availability for Abbey Foregate Band 5 Car Park in accordance with Schedule 5

 Oswestry Off Street Resident Parking Scheme



© Crown copyright 2018 OS 100049049



Drawing Number 6.10

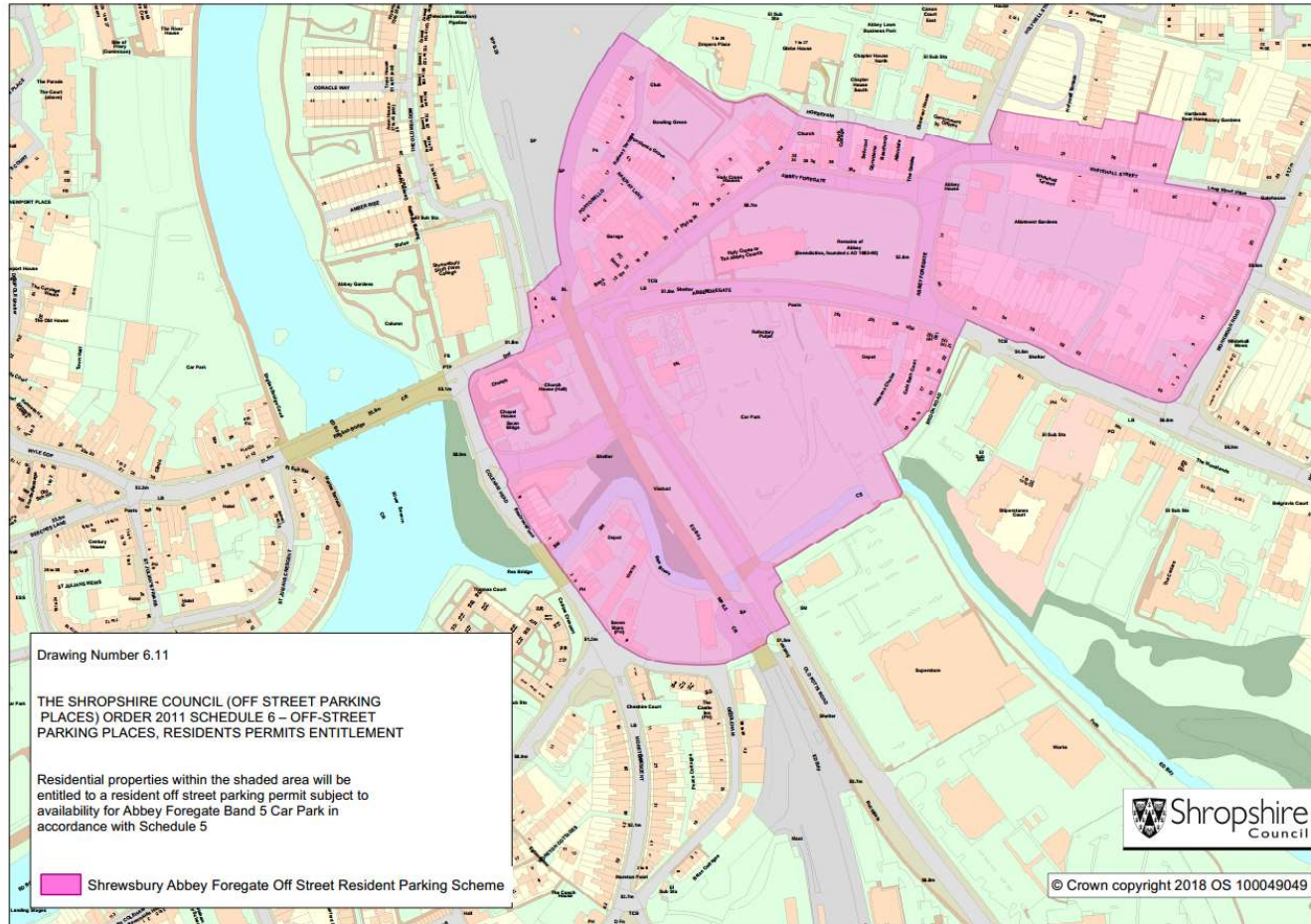
THE SHROPSHIRE COUNCIL (OFF STREET PARKING PLACES) ORDER 2011 SCHEDULE 6 – OFF-STREET PARKING PLACES, RESIDENTS PERMITS ENTITLEMENT

Residential properties within the shaded area will be entitled to a resident off street parking permit subject to availability for eligible car parks banded 4, 5 and 6 in accordance with Schedule 5.

 Prees Heath Off Street Resident Parking Scheme



© Crown copyright 2018 OS 100049049



Drawing Number 6.11

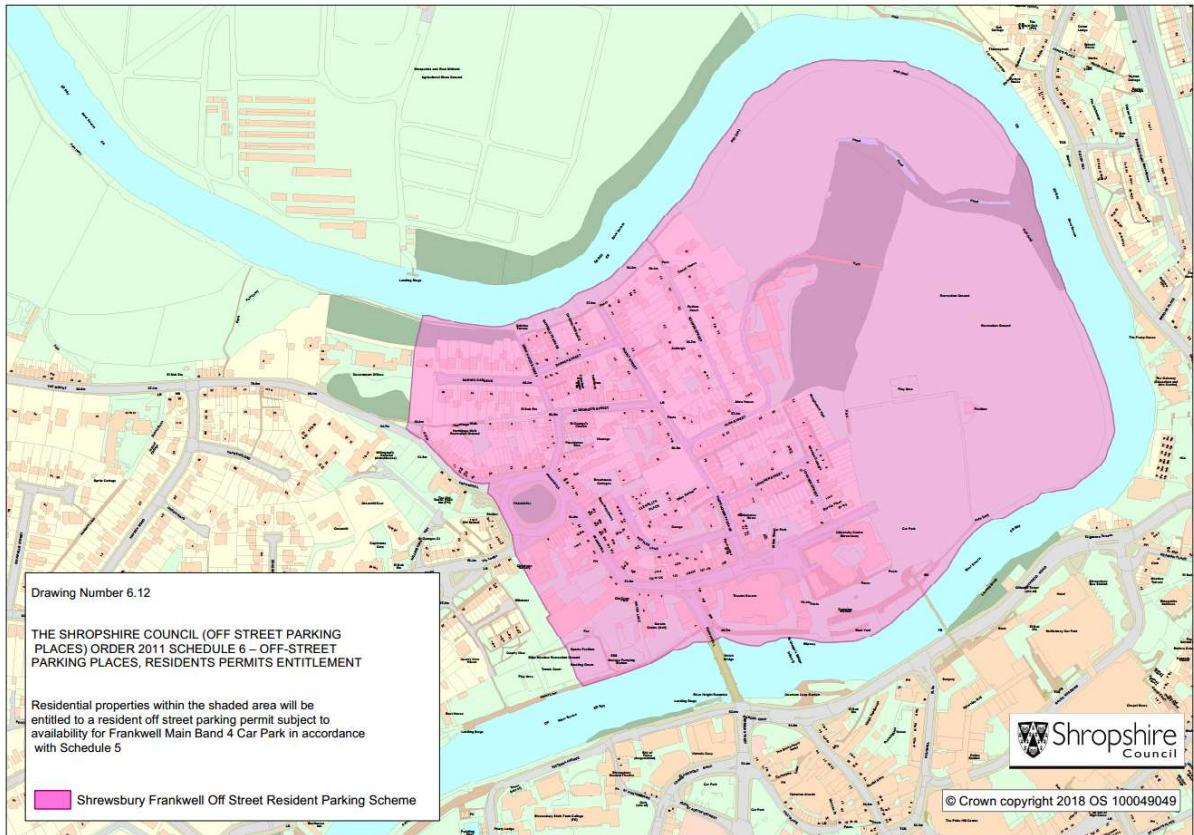
**THE SHROPSHIRE COUNCIL (OFF STREET PARKING PLACES) ORDER 2011 SCHEDULE 6 – OFF-STREET PARKING PLACES, RESIDENTS PERMITS ENTITLEMENT**

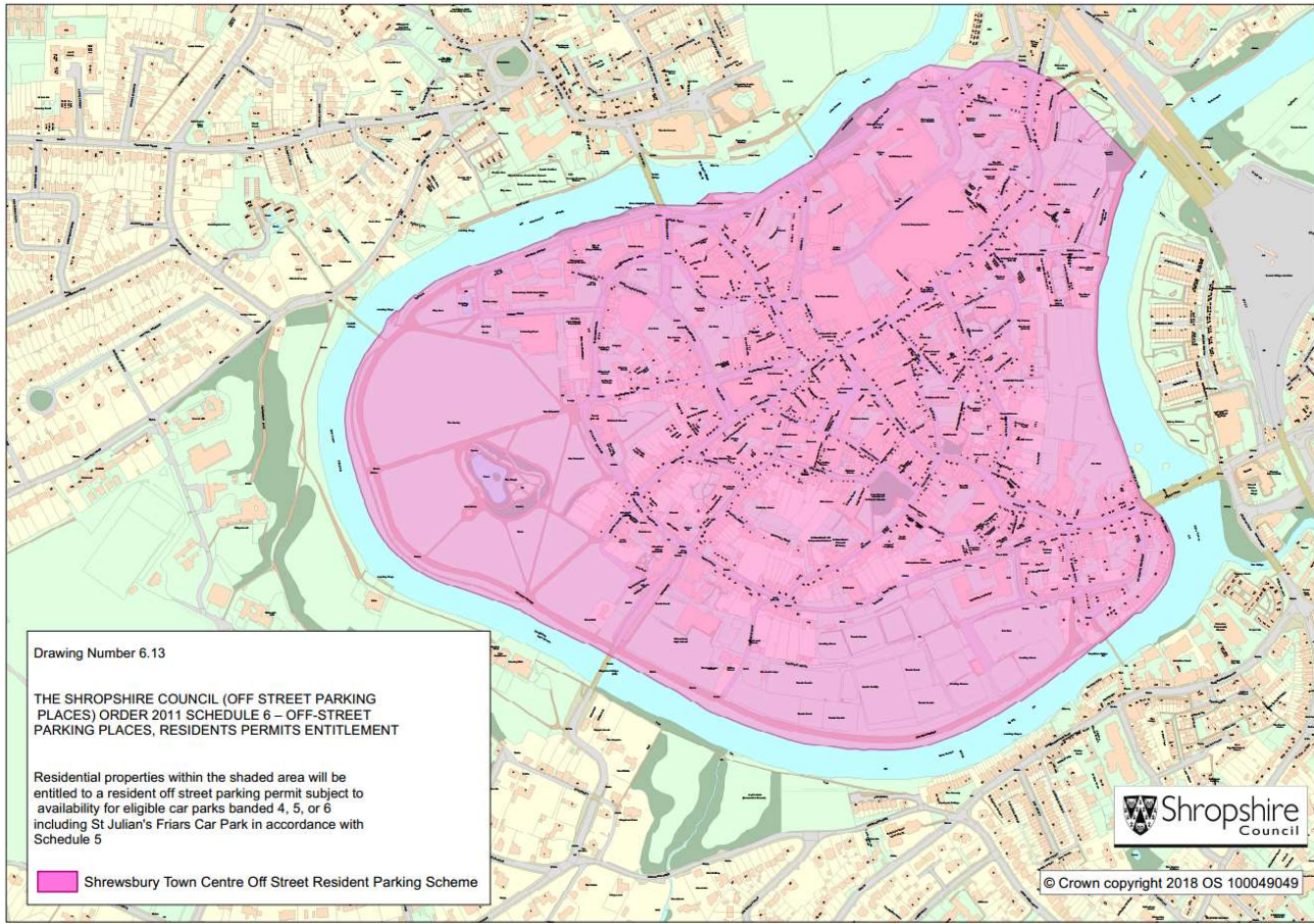
Residential properties within the shaded area will be entitled to a resident off street parking permit subject to availability for Abbey Foregate Band 5 Car Park in accordance with Schedule 5

 Shrewsbury Abbey Foregate Off Street Resident Parking Scheme



© Crown copyright 2018 OS 100049049






Drawing Number 6.13

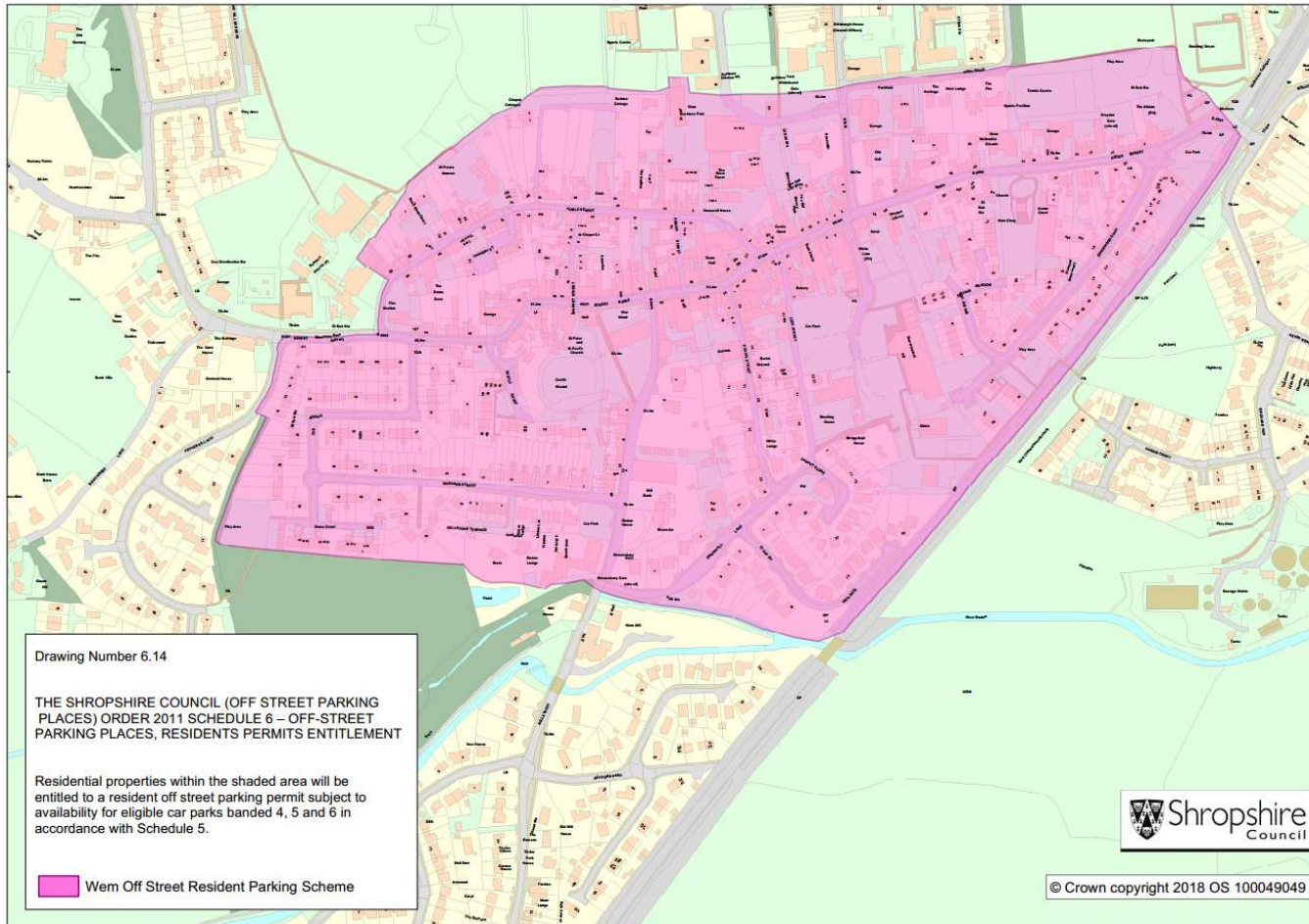
**THE SHROPSHIRE COUNCIL (OFF STREET PARKING PLACES) ORDER 2011 SCHEDULE 6 – OFF-STREET PARKING PLACES, RESIDENTS PERMITS ENTITLEMENT**

Residential properties within the shaded area will be entitled to a resident off street parking permit subject to availability for eligible car parks banded 4, 5, or 6 including St Julian's Friars Car Park in accordance with Schedule 5

 Shrewsbury Town Centre Off Street Resident Parking Scheme



© Crown copyright 2018 OS 100049049



Drawing Number 6.14

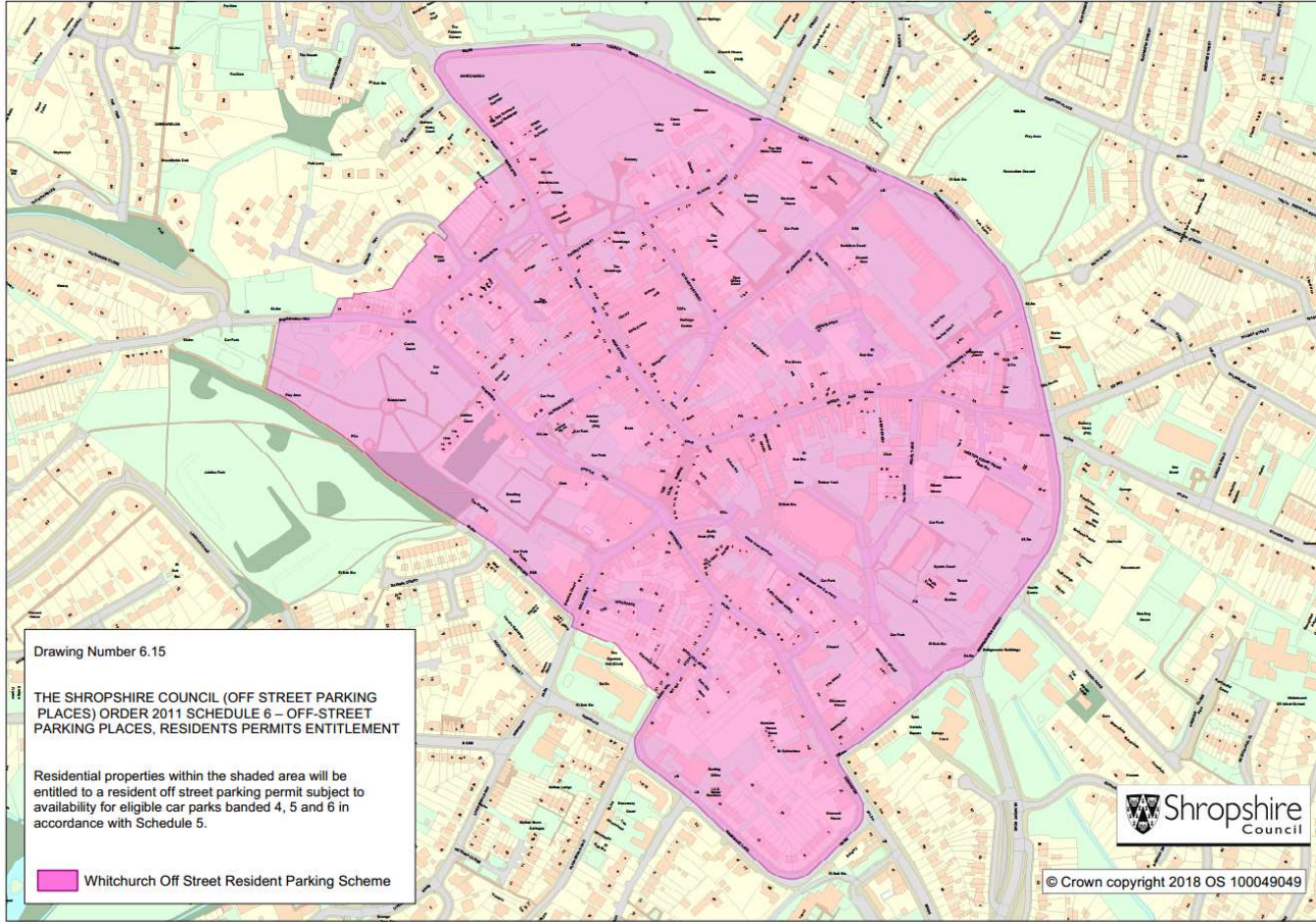
**THE SHROPSHIRE COUNCIL (OFF STREET PARKING PLACES) ORDER 2011 SCHEDULE 6 – OFF-STREET PARKING PLACES, RESIDENTS PERMITS ENTITLEMENT**

Residential properties within the shaded area will be entitled to a resident off street parking permit subject to availability for eligible car parks banded 4, 5 and 6 in accordance with Schedule 5.

Wem Off Street Resident Parking Scheme



© Crown copyright 2018 OS 100049049



Drawing Number 6.15

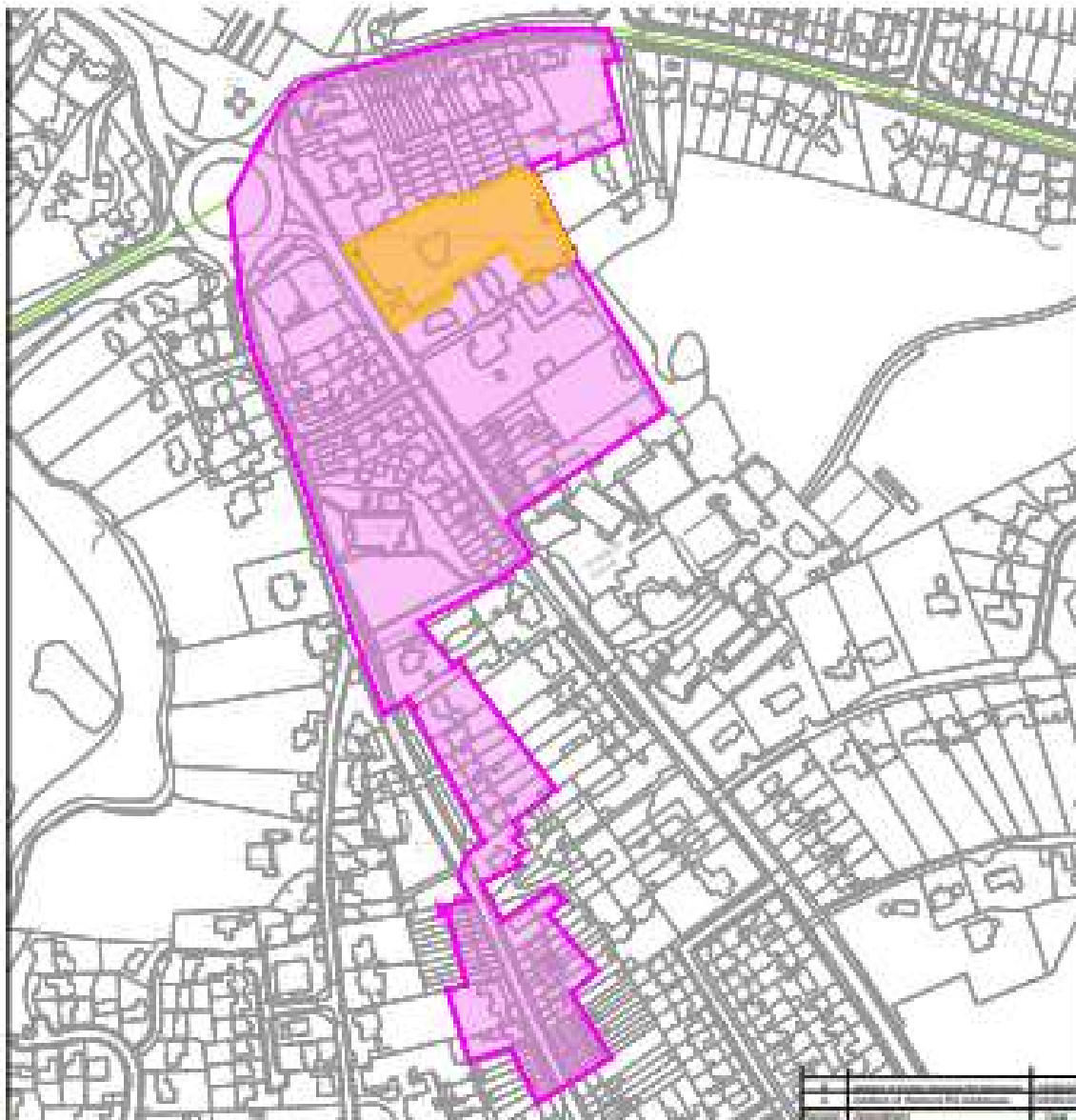
**THE SHROPSHIRE COUNCIL (OFF STREET PARKING PLACES) ORDER 2011 SCHEDULE 6 – OFF-STREET PARKING PLACES, RESIDENTS PERMITS ENTITLEMENT**

Residential properties within the shaded area will be entitled to a resident off street parking permit subject to availability for eligible car parks banded 4, 5 and 6 in accordance with Schedule 5.

 Whitchurch Off Street Resident Parking Scheme



© Crown copyright 2018 OS 100049049



Drawing Number 6.18

THE SHROPSHIRE COUNCIL, OFF STREET PARKING PLACES (ORDER 2011) SCHEDULE 2 - OFF STREET PARKING PLACES, RESIDENTS PARKING ENTHUSEMENT

Residential properties within the shaded area will be entitled to a resident off street parking permit subject to availability for regular car parks bands 1, 2 and 3 in accordance with Schedule 2.



<p>SHROPSHIRE</p> <p>Shropshire Council</p>
---



