

Children and Young People JSNA

Population and Context (0-19s) Chapter Summary
September 2024

What is a JSNA?

“a systematic method for reviewing the health and wellbeing needs of a population, leading to agreed commissioning priorities that will improve the health and wellbeing outcomes and reduce inequalities”

Joint

jointly produced by health, local authorities and community and voluntary organisations to provide a picture of people’s needs and to help them work together to find answers to those needs.

Strategic

they identify the ‘big picture’ of the health and wellbeing needs and differences across Shropshire.

Needs

they set out to find what people require to help their health and wellbeing and identify where these requirements are not being met. Considers wider determinants of health; the communities in which we live and the health and care we receive

Assessment

facts and figures, together with people’s knowledge, experience and opinions are used to find out what people’s current and future needs are. The JSNAs use a wide range of data collected from different sources including the Census, GPs, hospital admissions, social services, housing, police, leisure, education voluntary and community organisations.

Due to the vast scope of this product, Shropshire's Children and Young people JSNA is structured as a 'JSNA pack', containing individual chapters for each stage of the life course:

Core JSNA chapters

1. Population and context
2. Maternity (pregnancy & birth)
3. Early Years (0-4 years)
4. School aged children (5-11 and 12-16 years)
5. Young people (17-19 years)

Additionally, the development of 'Spotlight JSNA's' will be developed following the publication of the core 5 chapters to explore key areas of need further. The topics of the Spotlight JSNAs are being determined through engagement with stakeholders using a stakeholder survey and other forums.

Multiagency engagement and stakeholder activities were used to scope assets, opportunities and identify relevant data in 2023/2024.

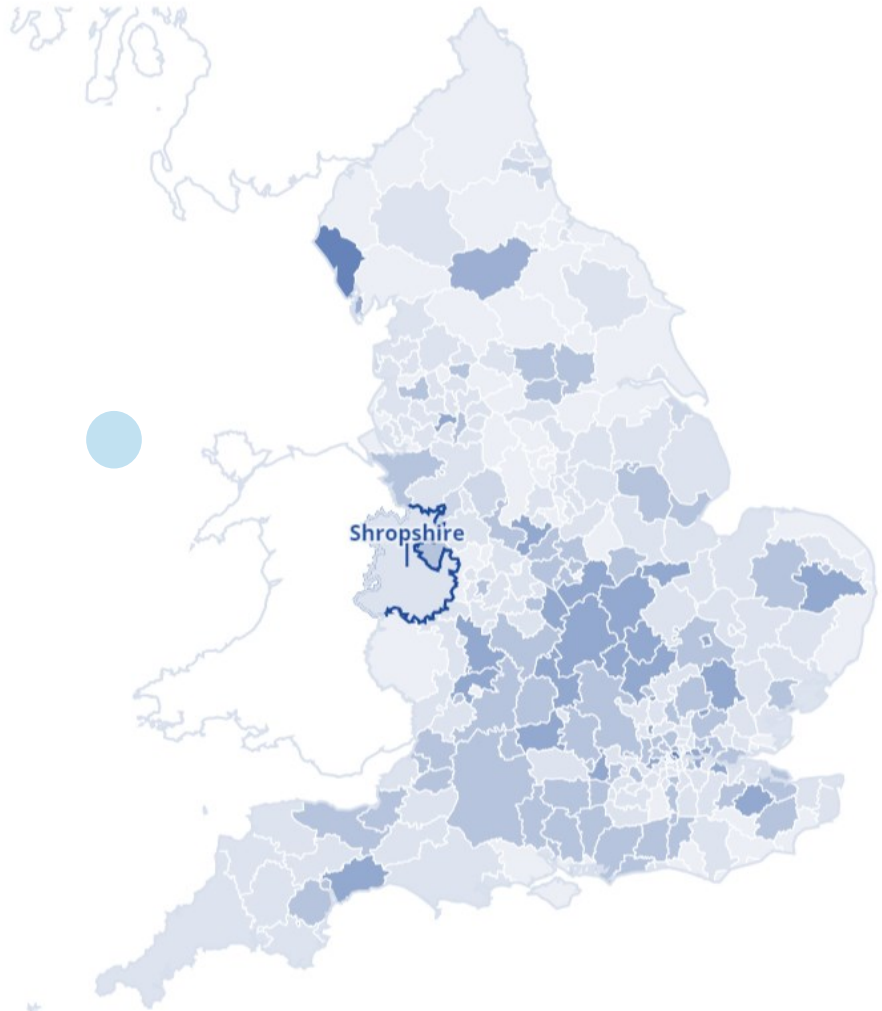
- Population structure, change and future trends
- Ethnicity
- Household composition
- Shropshire’s child population
- Shropshire’s school population
- Wider determinants of health
 - Deprivation
 - Rurality
 - Child poverty
 - Families on benefits
 - Parents/carers in substance misuse services
 - Domestic abuse
- Indicators of the general health of the entire population: Life expectancy, Infant and Child Mortality
- Child Health Profile (0-19s – OHID)- **Metrics which span all ages are included in this chapter.** Metrics specific to an age group can be found in the age-specific chapter.

Contents

Table of Contents

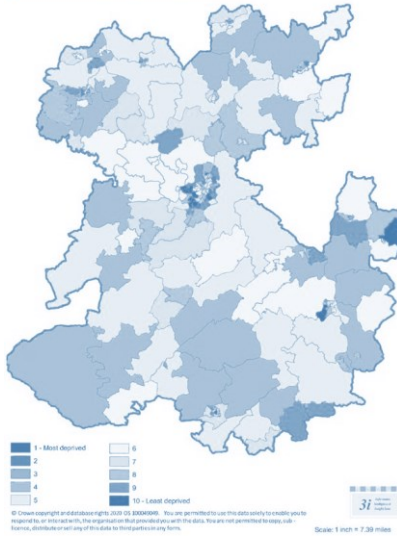
Introduction.....	2
Contents	3
Shropshire on a page	5
Shropshire’s population	7
Summary.....	7
Population structure	8
Ethnicity.....	10
Household composition.....	12
Population change	13
Fewer couples with dependent children	15
An older Shropshire.....	16
Shropshire 2050	17
Shropshire’s child population	17
Where do children and young people aged 15 and under live in Shropshire?.....	18
Where do children and young people aged 0-19 live in Shropshire?.....	18
Shropshire’s school population.....	28
School Population	28
Map.....	30
Languages spoken	30
Wider determinants of health and risk factors	35
Deprivation	36
Child poverty	36
Children in absolute low income families (under 16s).....	37
Children in relative low income families (under 16s)	37
Deprivation Affecting Children Index (IDACI)	38
Eligibility and claiming free school meals	39
Rurality and inequalities.....	42
Drugs and alcohol	47
Parents/carers and families in substance misuse services	47
Domestic abuse	48
National prevalence.....	49
West Midlands, West Mercia Police Force and Shropshire prevalence.....	51
Shropshire	53
Finance and Families	57
Child Health Profile (all ages).....	58
General Health of the population.....	61
Life expectancy at birth	61
Infant Mortality.....	64
Child mortality rate	65

Shropshire's Population

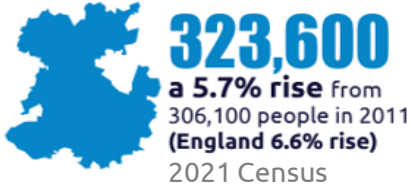


Population change (%) of local authority areas in England between 2011 and 2021
Percentage change

Overall Indices of Multiple Deprivation - National Decile



Shropshire's total population



181 schools of which 15 are independent and 19 are special

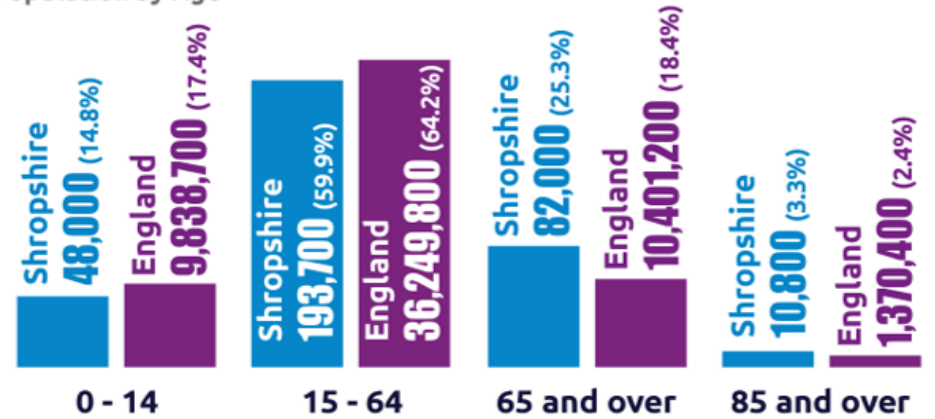
44,581 pupils aged 0-19

18.1% of pupils eligible for **free school meals** (2022/23)

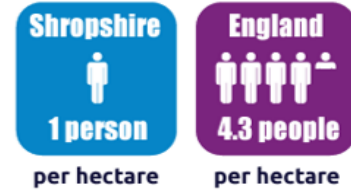
Overall deprivation is low. Ludlow East and Harlescott fall within the 10% most deprived areas in England.

Population by Age

2021 Census



Population Density



Smallest state primary school – 25 pupils

Smallest state secondary school – 512 pupils

93.2% from white background, 95.7% with English as first language (2021)

25.3% aged 65+ compared to 18.4% in England

64,838 aged 0-19 or 20.0%, England 23.1% (2021)

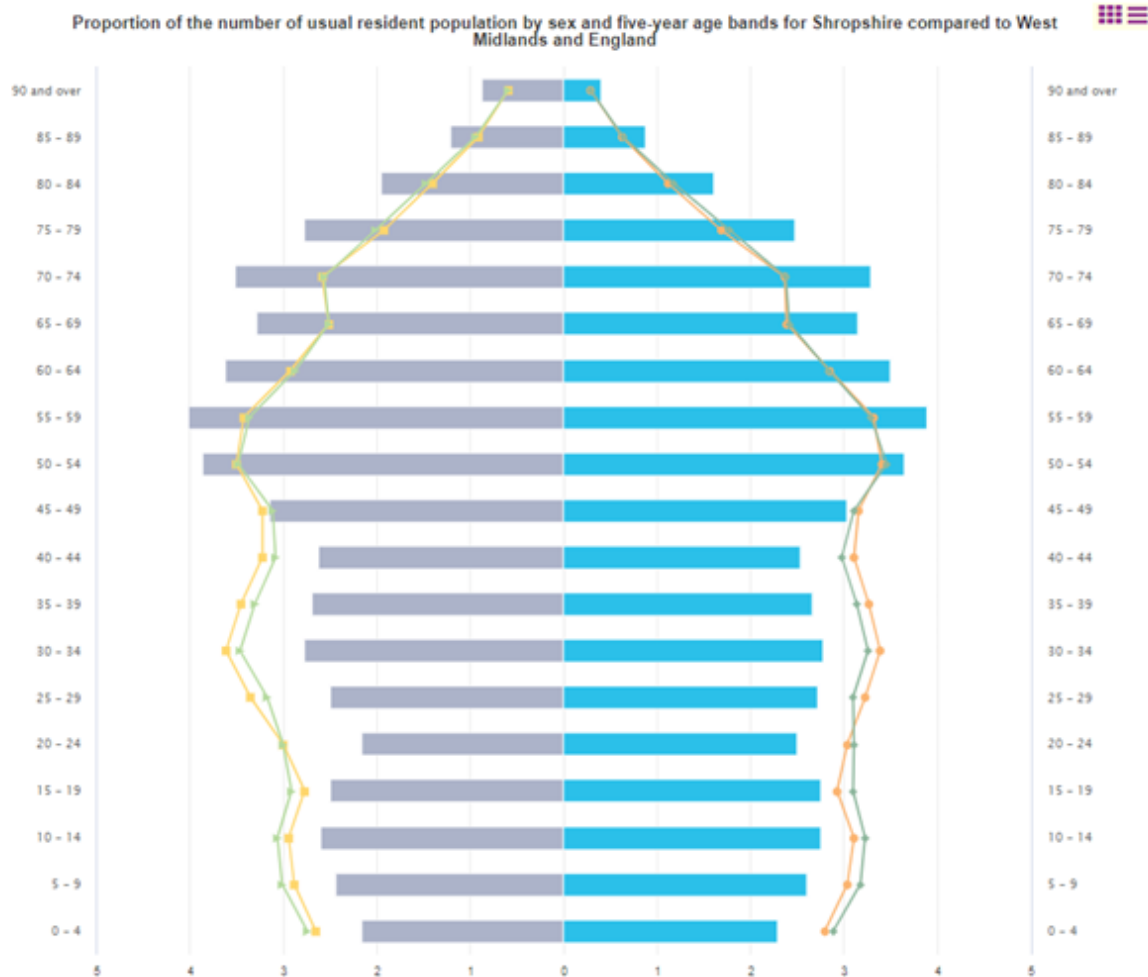
Employment rate of 77.3%, West Midlands 73.6% (2022/23)

609 looked after children in Shropshire (2022/2023)

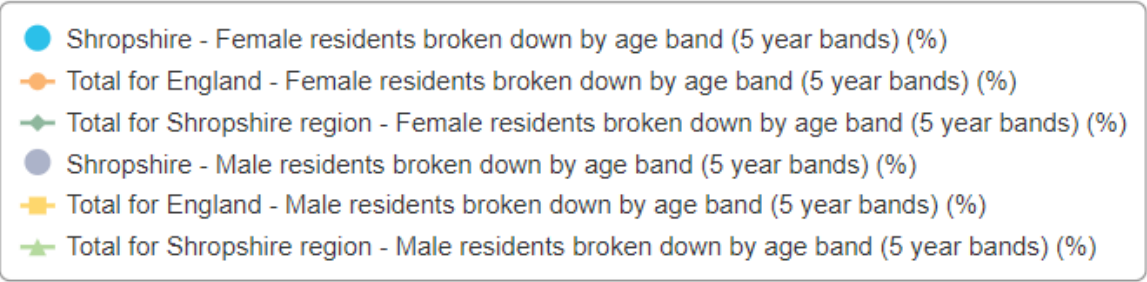
Evidence of rural **food insecurity** and **18.0% fuel poverty** across the county (2021)

Population Structure 2021

Population pyramid showing the number and proportion of residents by gender and age in Shropshire, West Midlands and England, 2021. Source: [Census 2021](#), ONS.



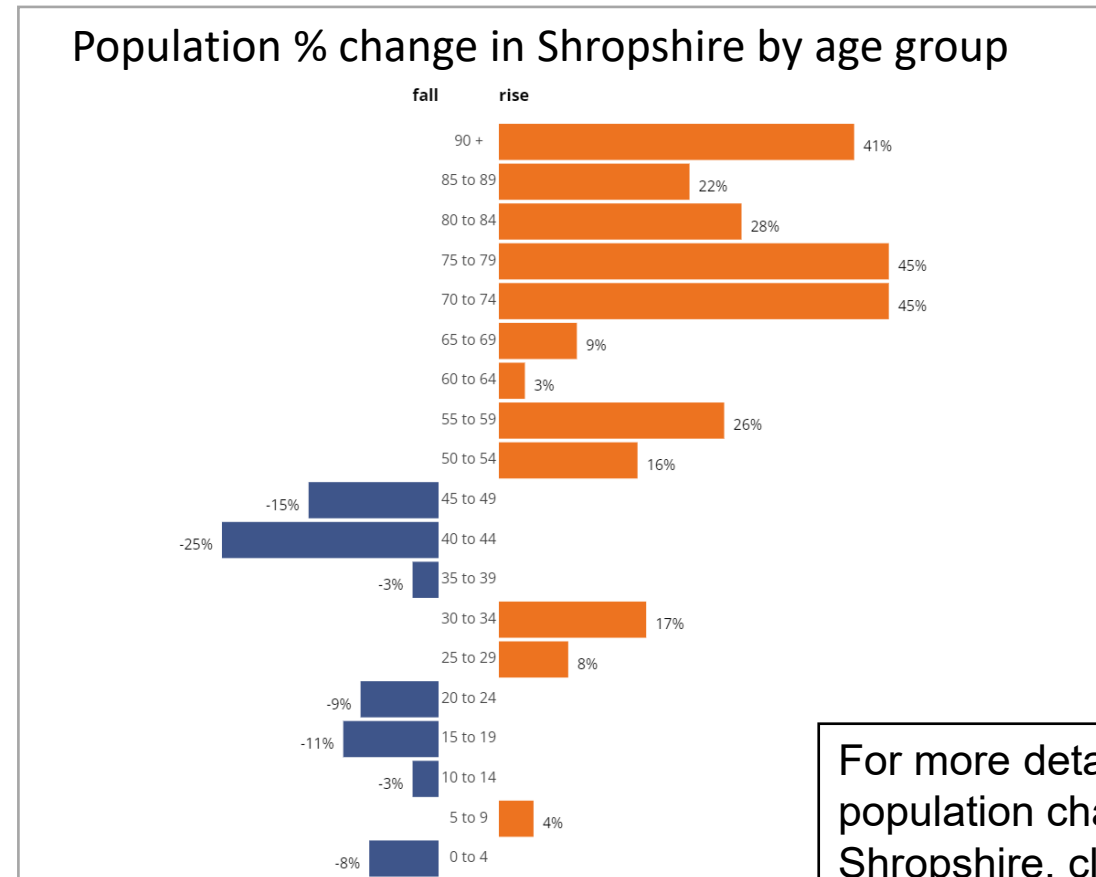
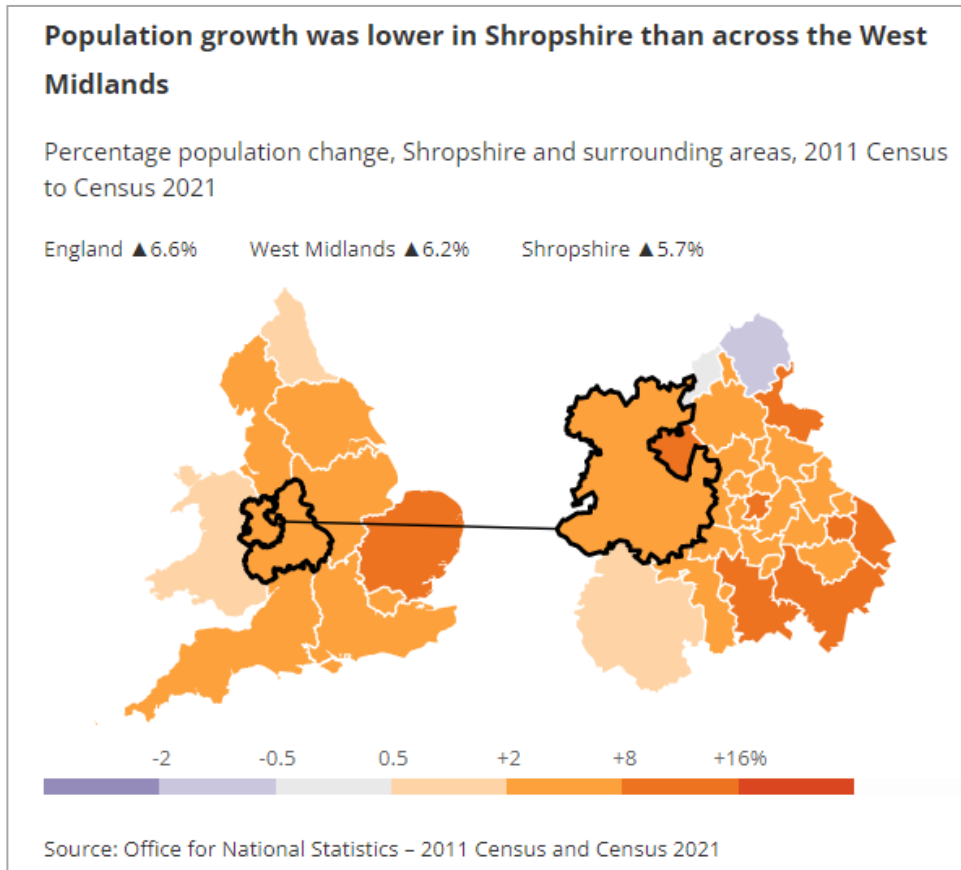
- Largest proportion of residents aged 55-59 in Shropshire (25,538 people, 7.6%). In the West Midlands, the largest group were those aged 50-54 (6.7%) and in the England, those aged 30 - 34 (6.8%).
- In 2021, **20.1% (64,838) of Shropshire's population were aged 0-19 years old, similar to the England proportion of 23.1%.**



For more detail on Shropshire's population, click [here](#).

Population change (2011 vs 2021)

- Population **increased by 5.7% overall** (306,000 in 2011 to 323,000 in 2021), **lower** than the overall increase for the West Midlands Region (6.2%) and England (6.6%).
- **Largest increase among the 70 to 74 and the 75 to 79** age bands at 45%.
- **0-19 children and young people population fell by 18%**, with the largest reduction seen among 15-19 year olds.



For more detail on population changes in Shropshire, click [here](#).

Population projections 2050

Population 2021: **323,600**

Population 2050: **385,000**



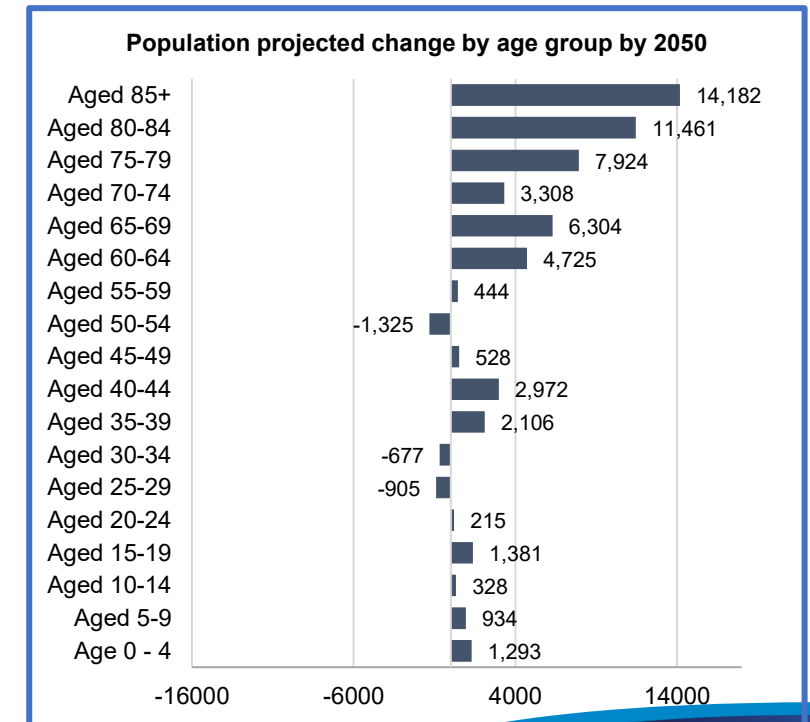
More than
61,000 extra
people



19% growth 2021-2050

26% growth 1991-2021

- The population in Shropshire will grow by 61,000 people by 2050, a **rise of 19% compared to 2021.**
- Largest rises will be among those **aged 65+.**
- 0-19 year old group will grow by 3,933 people, rise of 6%** compared to 2021. Largest rise in CYPs among 15-19 year olds (+1,381 people).



Fewer couples with dependent children

Shropshire saw the West Midlands' second-largest percentage-point fall in the share of households including a couple with dependent children (from 19.5% in 2011 to 16.9% in 2021).

Number of Households 2021: **139,600**



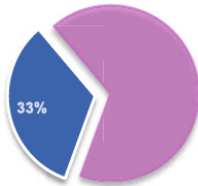
Almost **40,000**
extra Households

Number of Households 2050: **179,300**

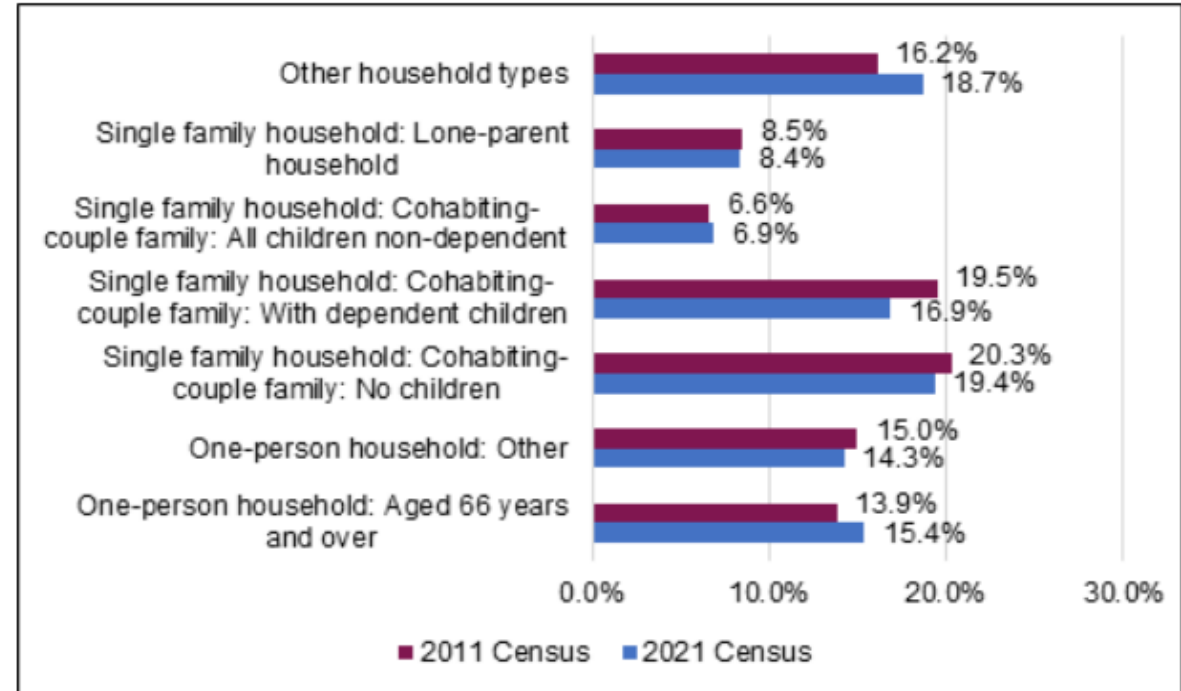


28% growth 2021-2050
34% growth 1991-2021

A third of
households will be
single person

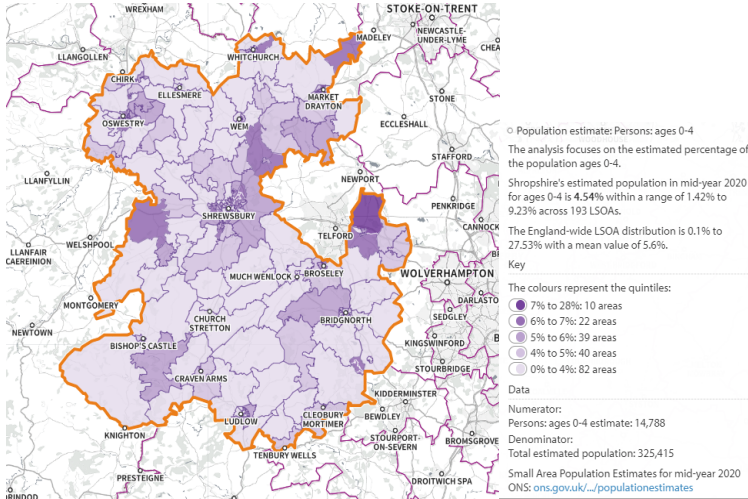


18,000 more single person households
+44% growth 2021-2050

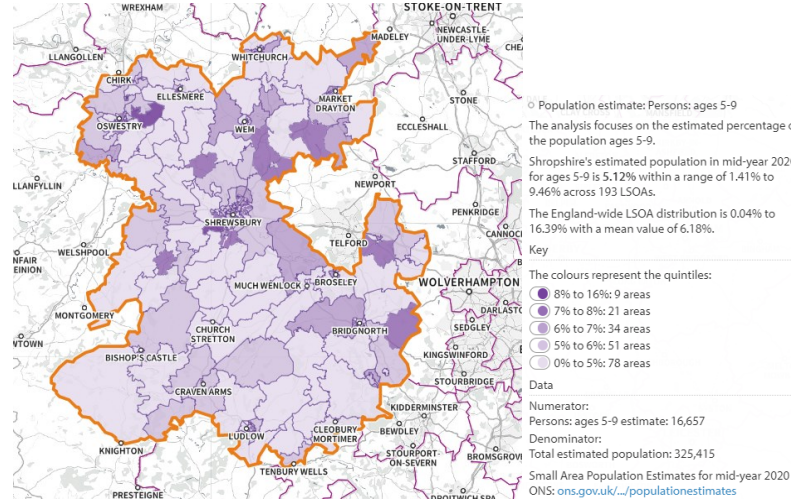


Where do our CYPs live?

0-4 year olds

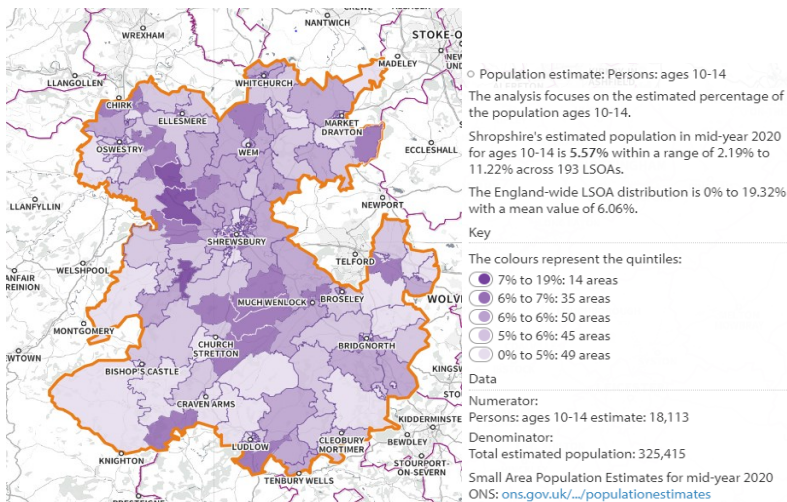


5-9 year olds

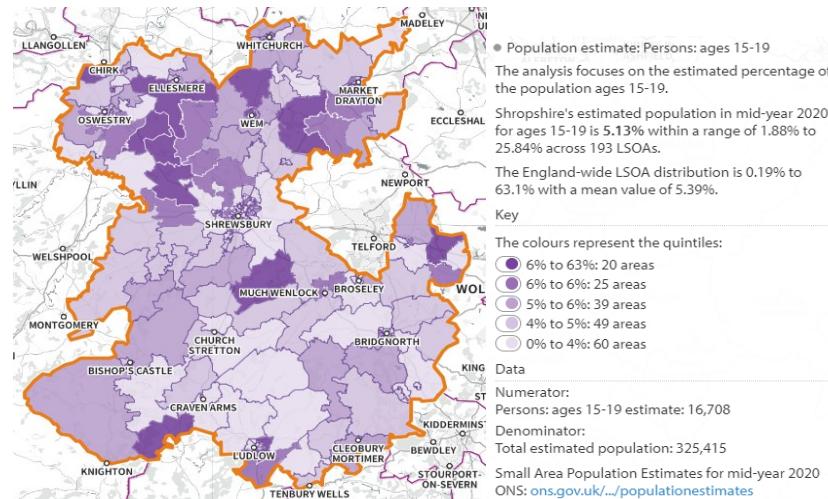


- Areas with the largest number of children aged 0-19 are: Bayston Hill, Column and Sutton, Oswestry East, Market Drayton West and Wem, with more than 1,800 children and young people living in each of these wards.
- When broken down further, there are variations in the areas CYPs in Shropshire live.

10-14 year olds

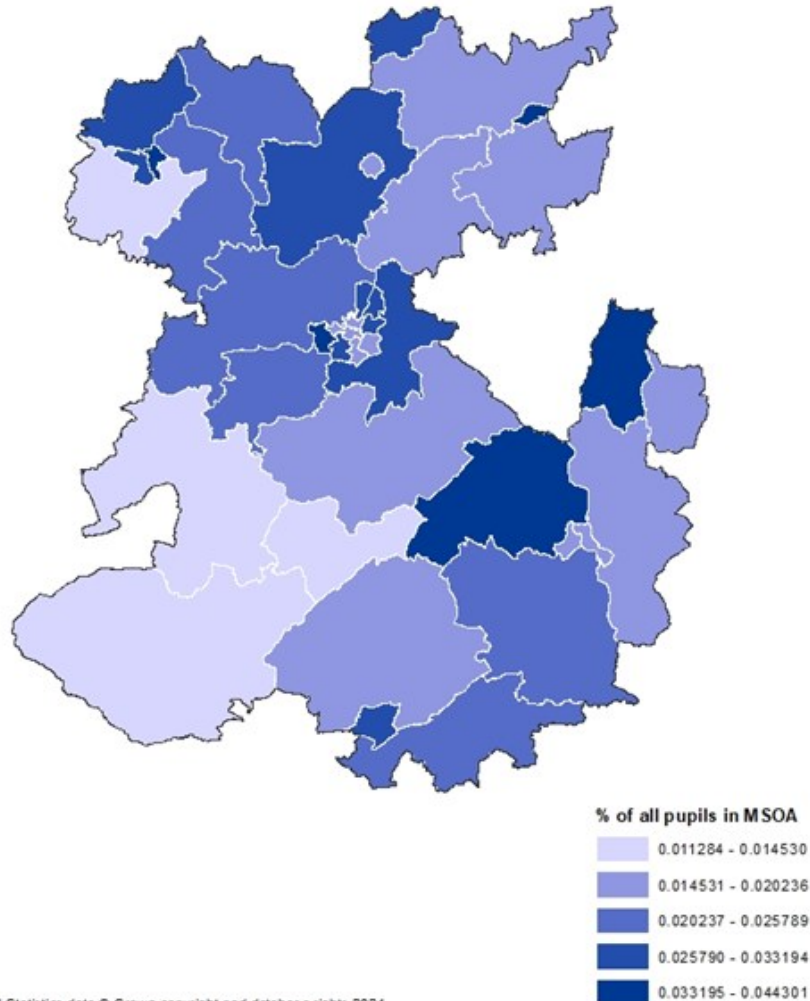


15-19 year olds



- The highest number of 0-4 year olds live in Bayston Hill, Column and Sutton ward, Oswestry East and Market Drayton West

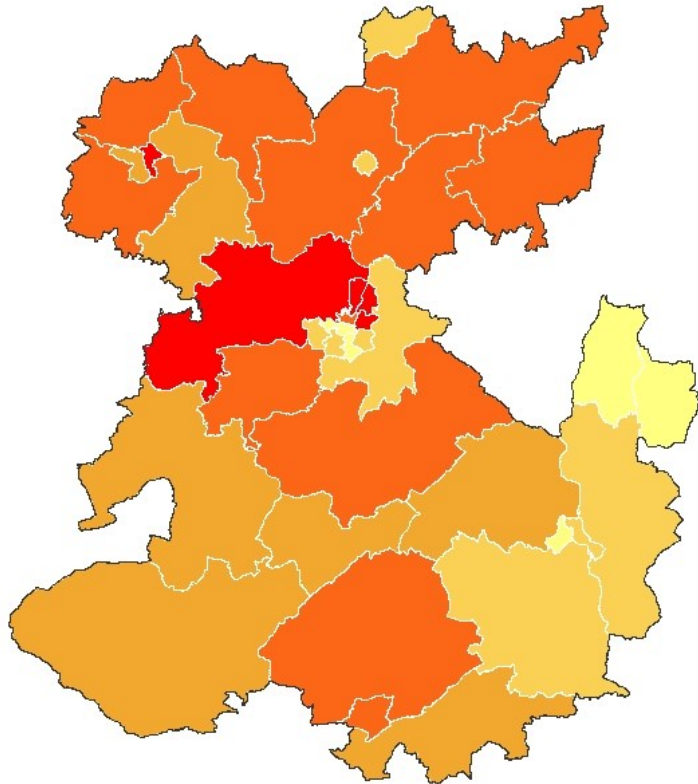
Percentage of all pupils at Shropshire schools by MSOA



- Based on the Shropshire school census, there are just under 40,000 children who attend Shropshire local authority schools.
- 94% of children who attend Shropshire schools live in Shropshire, however, there are children who live in other areas.
- There are 1,624 children who are aged 0-4 who attend Shropshire schools. 75% of these are children in the N2 school year (aged 3 on 31st August but turning 4 during the year).

School population - SEND support

Percentage of pupils in each MSOA who require Special Educational Needs support



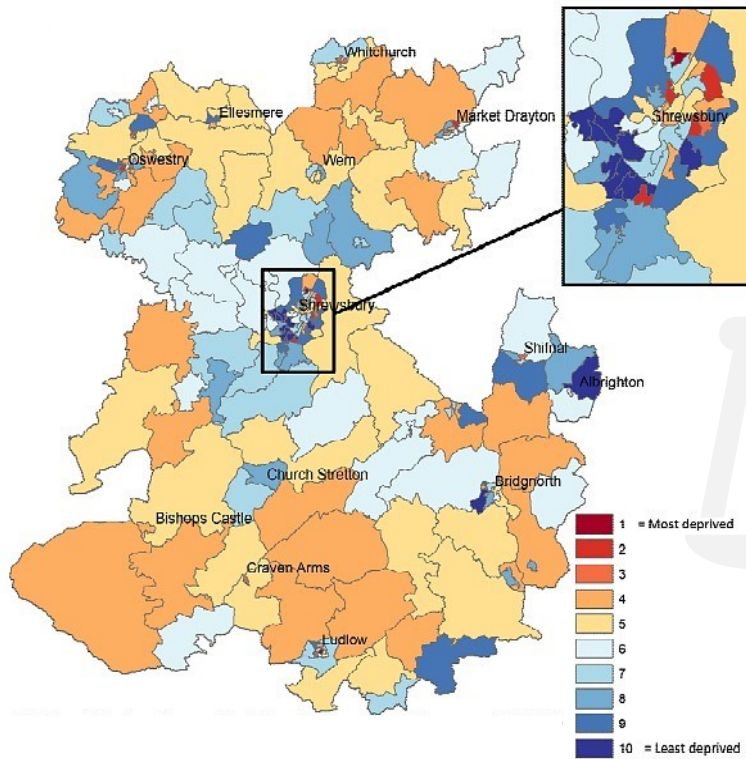
% of pupils in each MSOA who require SEN support



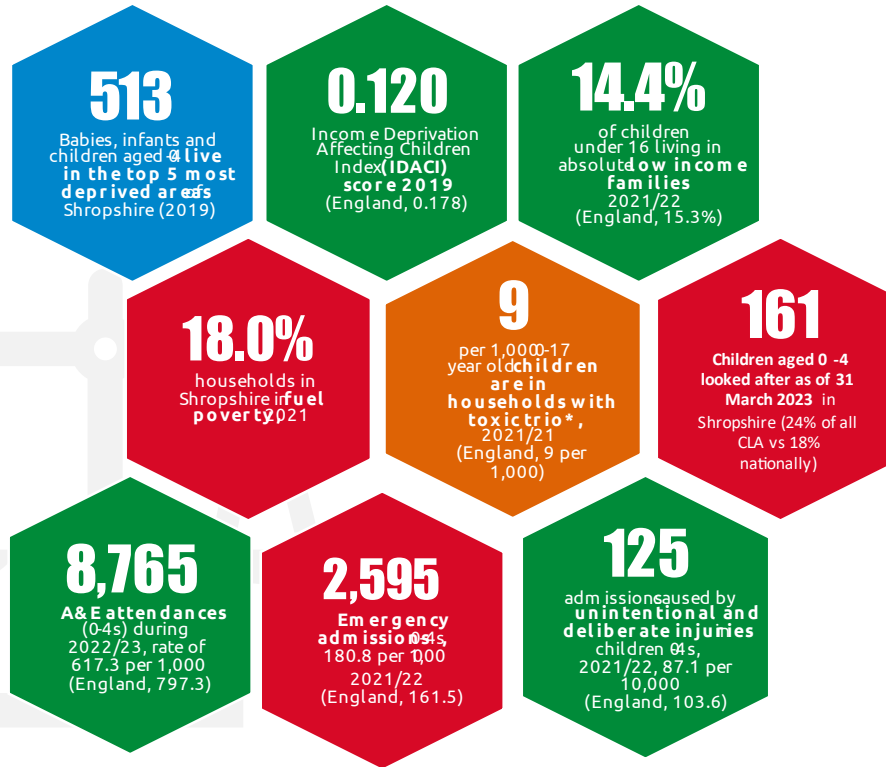
- 5,103 pupils (12.9%) of the school population require SEN support
- 1,493 pupils (3.8%) have an education, health and care plan.

Wider determinants of health and risk factors

Child Safety and Well-being Shropshire



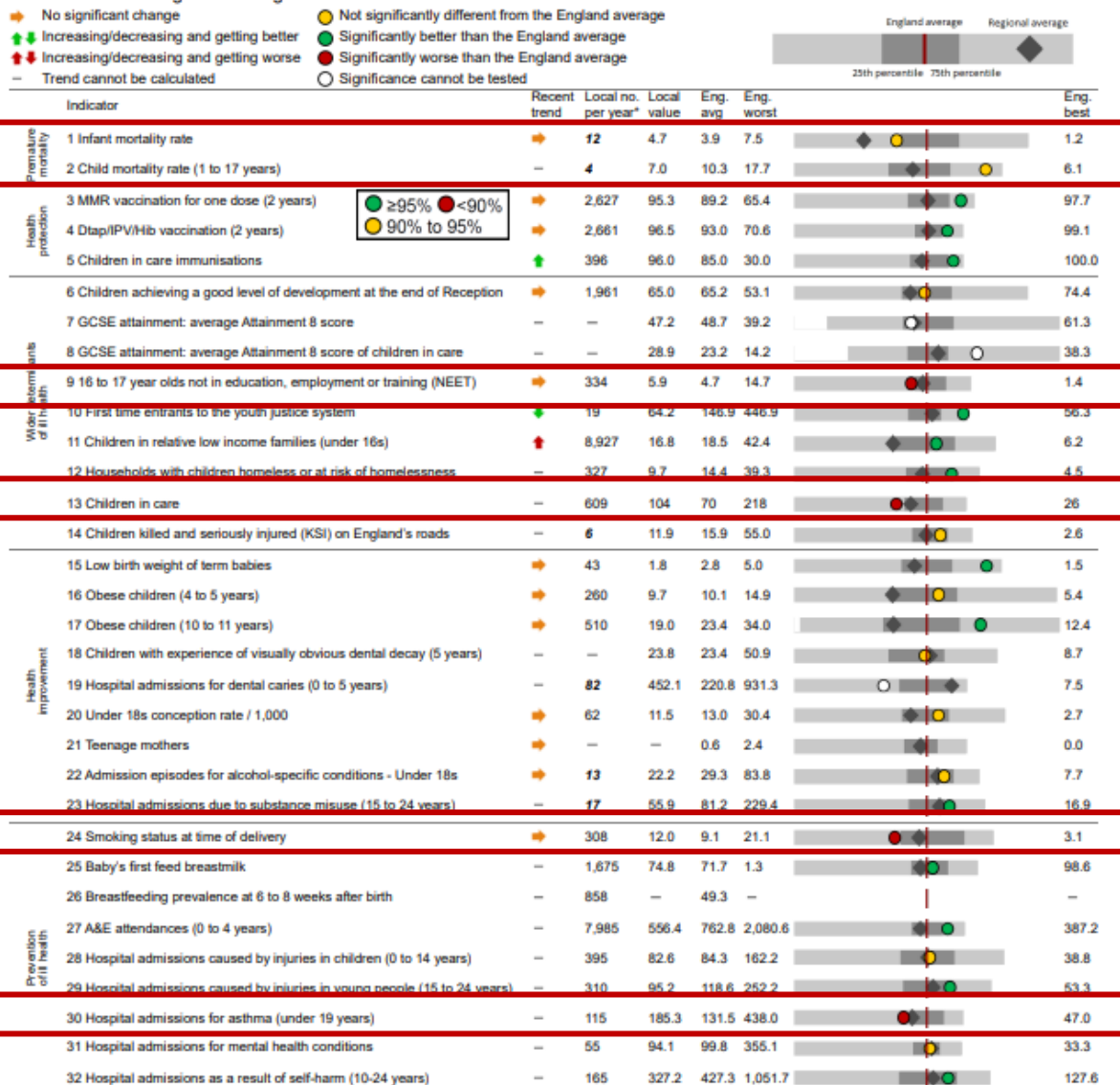
5% of Shropshire's population (15,082) live in the 20% most deprived areas in England (Decile 1 and 2), 2019



Red = worse, orange = similar, green = better than national rate
*co-occurring parental substance misuse, mental ill health and domestic

More detail can be found in the full report.

The chart below shows how children's health and wellbeing in this area compares with the rest of England. The local result for each indicator is shown as a circle, against the range of results for England shown as a grey bar. The line at the centre of the chart shows the England average.



Areas of need

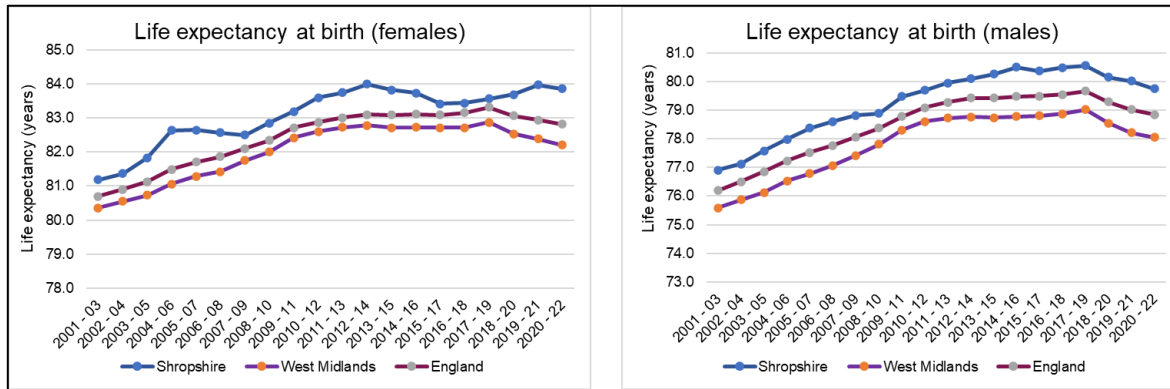
This provides a high level overview of the Health and Wellbeing of children and young people aged 0-19 in Shropshire.

Metrics which span all ages are included in this chapter. Metrics specific to an age group are included in their relevant chapter.

More detail can be found in the full report.

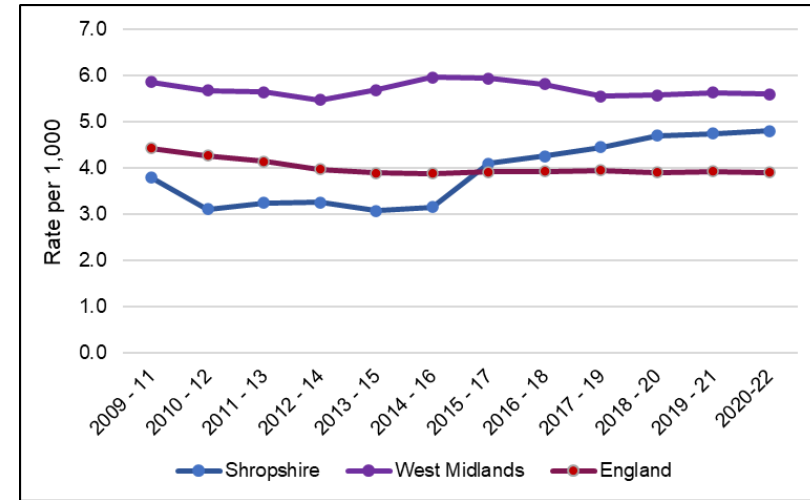
Indicators of general health of the population

Life expectancy at birth



Life expectancy at birth in Shropshire is higher among females compared to males. Both are rising over time and are above the regional and national average

Infant mortality



There were 37 deaths under one year of age in Shropshire, equating to an infant mortality rate of 4.8 per 1,000 live births. Sixth lowest regionally, similar to the regional rate of 5.6 per 1,000 and the national rate of 3.9 per 1,000 live births. Shropshire's rate was the highest compared to its statistical neighbours.

For feedback and queries, please contact Jess Edwards
Public Health Intelligence Manager
jess.edwards@shropshire.gov.uk