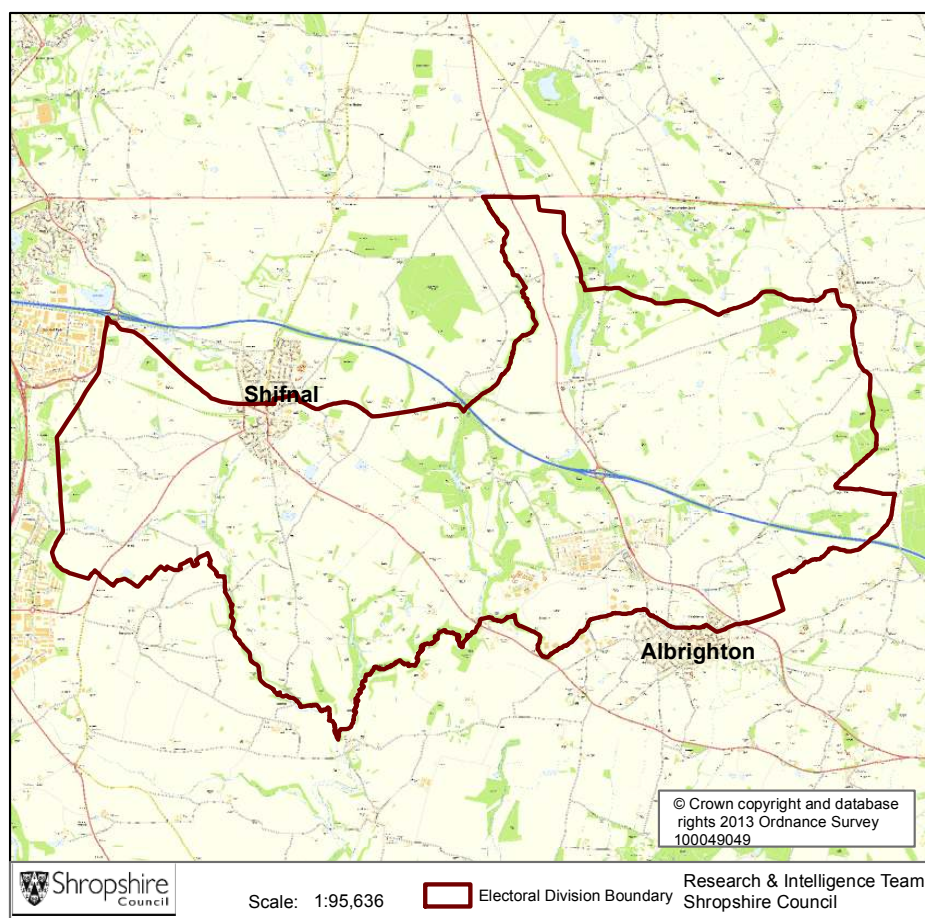


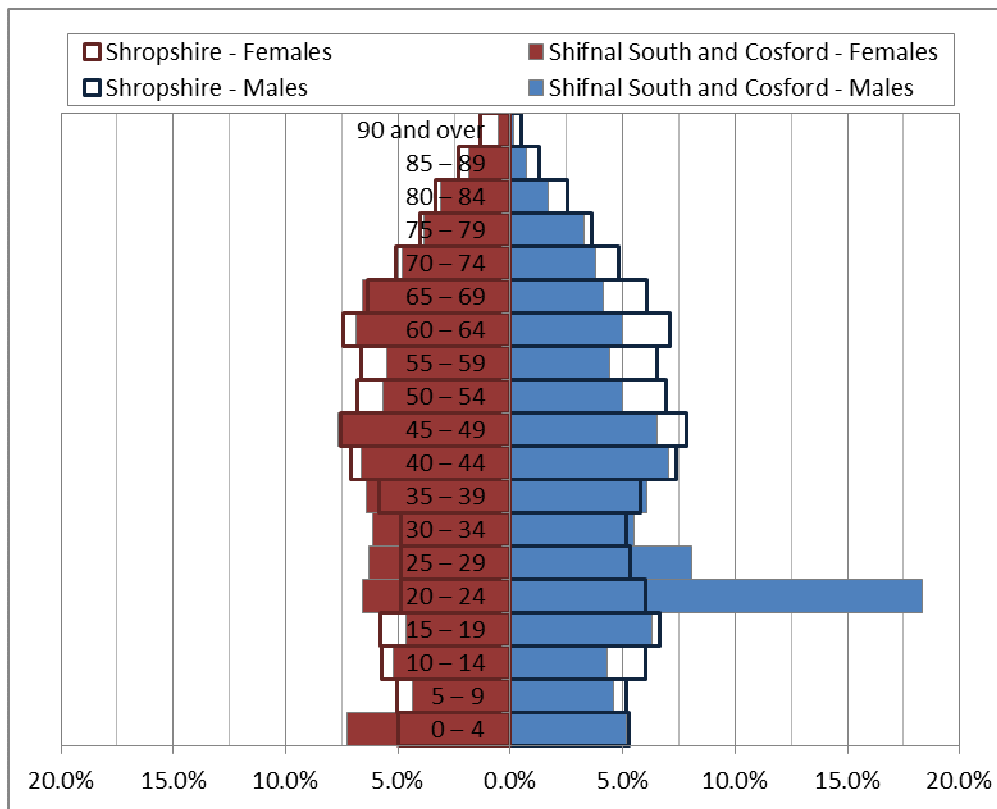
Shifnal South and Cosford



Key Facts:	Shifnal South and Cosford Ward
Area:	4,970.5 hectares (39 th smallest Shropshire ward)
Population Density:	1.06 persons per hectare (28th least densely populated ward)
Total Population	5,248 (2,917 males, 2,331 females)
Average Age	37 years
Household Population:	4,561 (86.9%)
Households: Dwellings:	1,971 2,108
Communal Establishment no. / population	4 Communal Establishments 687 residents (13.1% of total population)

Source: 2011 Census, Office for National Statistics, © Crown Copyright 2014. Please note: Ward boundary changes in 2009 mean it is not possible to compare back over time.

Population Age Structure



A population pyramid comparing the age structures of Shropshire and Shifnal South and Cosford ward

Table: Population by five year age group (2011 Census)

	Total Population	% of Total Population			
		Shifnal South and Cosford	Shropshire	West Midlands	England
All ages	5,248	100.0	100.0	100.0	100.0
0 – 4	320	6.1	5.1	6.3	6.3
5 – 9	236	4.5	5.1	5.8	5.6
10 – 14	246	4.7	5.9	6.1	5.8
15 – 19	291	5.5	6.2	6.6	6.3
20 – 24	689	13.1	5.4	6.8	6.8
25 – 29	383	7.3	5.1	6.5	6.9
30 – 34	304	5.8	5.0	6.1	6.6
35 – 39	327	6.2	5.8	6.4	6.7
40 – 44	360	6.9	7.2	7.3	7.3
45 – 49	370	7.1	7.7	7.2	7.3
50 – 54	277	5.3	6.9	6.3	6.4
55 – 59	257	4.9	6.6	5.7	5.7
60 – 64	306	5.8	7.3	6.0	6.0
65 – 69	274	5.2	6.2	5.0	4.7
70 – 74	222	4.2	4.9	4.0	3.9
75 – 79	185	3.5	3.8	3.2	3.1
80 – 84	121	2.3	2.9	2.4	2.4
85 – 89	64	1.2	1.8	1.5	1.5
90 Plus	16	0.3	0.9	0.7	0.8

Population Age Structure

- Early years: 6.1% (320) of the population were aged 0 to 4 years in March 2011. This compares with 5.1% at County level, 6.3% regionally and 6.3% nationally.
- School age: 11.9% (622) of the population were aged 5 to 17 years in March 2011. This compares with 14.9% at County level, 15.8% regionally and 15.1% nationally.
- Working age: 65.2% (3,424) of the population were aged 18 to 64 years in March 2011. This compares with 59.3% at County level, 61.0% regionally and 62.3% nationally.
- Retirement age: 16.8% (882) of the population were aged 65 and over in March 2011. This compares with 20.7% at County level, 16.9% regionally and 16.3% nationally.
- Over 85 year olds: 1.5% (80) of the population were aged 85 and over in March 2011. This compares with 2.7% at County level, 2.2% regionally and 2.2% nationally.

Diversity

- The 2011 Census showed Shifnal South and Cosford ward had a black and minority ethnic group population of 176 (3.35%). The largest broad ethnic group is 'Asian' (within this the largest group is 'Other Asian'). For the first time, the 2011 Census showed the Ward had a gypsy population of 0.
- When asked about their religion 28.4% (1,489 people) identified themselves as having no religion or did not state it on the form. The majority of people (69.4%) identified themselves as Christian and 2.2% (117 people) identified themselves as having an alternative religion.
- The 2011 Census showed that 9 people could not speak English well and 2 people could not speak English at all.

Car Ownership

- The 2011 Census showed that 208 households (10.6%) did not own a car and subsequently were reliant on other forms of transport such as public transport services. In total 2,959 cars were owned by households resident in the ward.

Health

General Health

The 2011 Census asked three questions relating to health and the provision of unpaid care. The questions related to whether people felt their general health was good, whether they looked after or gave help or support to other family members, friends, neighbours or others and lastly whether their day to day activities were limited because of a health problem or disability.

- At the time of the 2011 Census 54% of people in Shifnal South and Cosford ward said that they felt they were in 'Very Good Health'. This compares with 46% for Shropshire as a whole.
- Only 1% of the population reported that they were in 'Very Bad Health'. This is in line with the overall result for Shropshire (1%).

Provision of Unpaid Care

The question asked "do you look after, or give any help or support to family members, friends, neighbours or others because of either; a long term physical or mental ill health/disability? Or because of problems related to old age?"

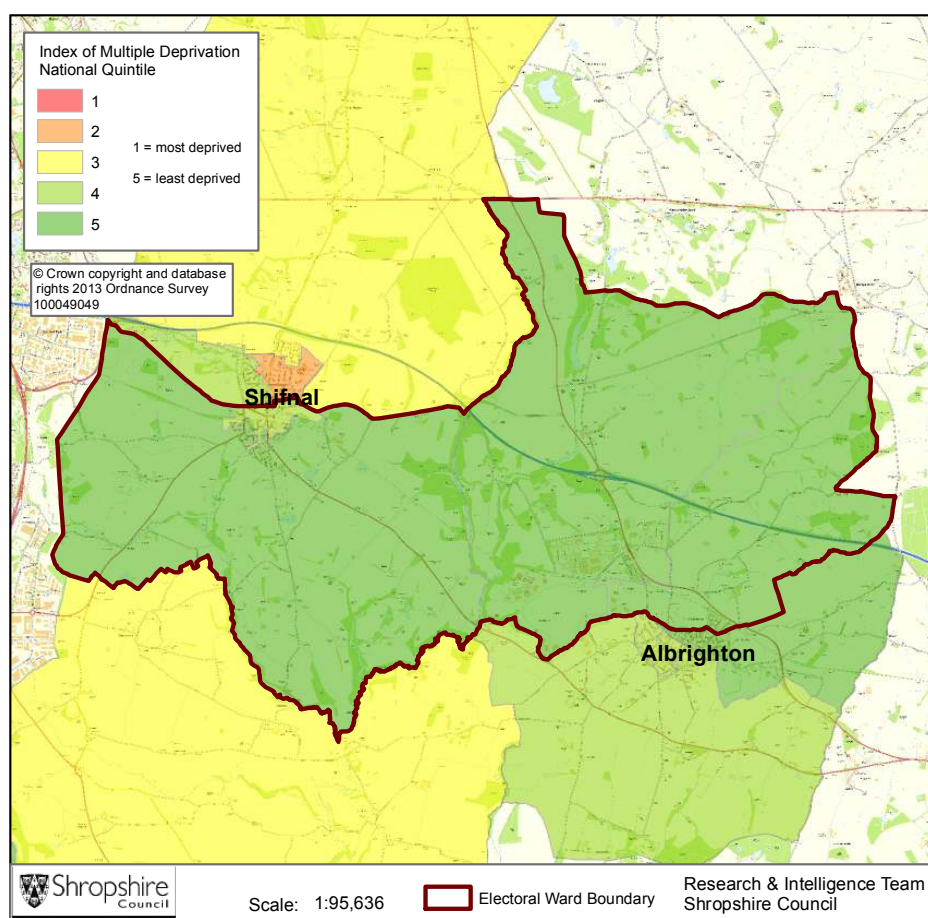
- At the time of the Census 6% of the population said that they were providing 1 to 19 hours of unpaid care a week. This is less than the Shropshire figure of 7%.
- 1% said they provided between 20 and 49 hours of unpaid care. This is in line with the Shropshire figure of 1%.
- 2% said they provided over 50 hours of unpaid care. This is in line with the figure for Shropshire as a whole (2%) and the figure for England & Wales (2%).

Long Term Illness or Disability

The Census asked "Are your day-to-day activities limited because of a health problem or disability which has lasted, or is expected to last, at least 12 months?"

- 5% of the population said that their day-to-day activities were limited a lot due to a health problem or disability. This is less than the figure for Shropshire as a whole (8%).
- The percentage who reported their day-to-day activities were limited a little was 8%. This is less than the figure of 10% for Shropshire as a whole.

Index of Multiple Deprivation



Shifnal South and Cosford electoral ward is made up of lower super output areas which fall within the 4th or 5th quintile nationally in terms of the Overall Index of Multiple Deprivation.

Quintile 1 is the most deprived nationally and Quintile 5 the least deprived nationally.

Source: IMD 2010, Department for Communities and Local Government, © Crown Copyright 2014

Housing and Households

- There were 1,971 households in Shifnal South and Cosford ward.
- The ward had 5,248 usual residents and covers an area of 4,970 hectares.
- 736 households were owner occupiers (owned outright), this equates to 37%. There were 509 households owned with a mortgage or loan, as a percentage that totals 26%.
- Households privately renting from a landlord totalled 276 or 14% of all households. There were 251 households (13%) privately renting classified as 'Other'.
- 76 households rented social housing from the Council, totalling 4% of all households. There were also 89 (5%) households who rented social housing from 'Other' sources.
- In Shifnal South and Cosford ward there were 802 detached dwellings, 38% of all dwellings. There were also 783 (37%) semi-detached dwellings and 315 (15%) terraced dwellings.
- 14% of all households (271) are one person pensioner households.
- 29.5% of households in the area had dependent children. The number of married couple households with dependent children was 410 and the number of cohabiting couples with dependent children was 53.
- There were 92 lone parent households, which equates to 4.7% of all households.

Planning Land Use Monitoring Data 2012-2013

Source: Shropshire Council, Planning Land Use Monitoring System, 2014

Housing

- During 2012-2013 there were 56 housing completions (gross) within the Shifnal South and Cosford ward. Included in this figure are 15 affordable housing units. During this time 0 dwellings were lost during development.
- At April 2013 there were 127 dwellings with planning permission outstanding, including 22 affordable houses.
- At April 2013, 0 proposed dwellings were part of the current Shropshire Council housing allocations. However, as part of the on-going preparation of the Site Allocations and Management of Development Plan (SAMDev) Plan, the Planning Policy team is now consulting on the 'Revised Preferred Options'.

Employment

- During 2012-2013, 0.172 hectares of Class B employment land was completed within the Shifnal South and Cosford ward. The total completed gross floor space amounted to 1,698 square metres.
- At April 2013 there remained 0.357 hectares of Class B employment land outstanding with planning permission and 0 hectares of allocated employment land.

Retail

- A total of 0 net square metres of retail floor space was completed in the Shifnal South and Cosford Ward during 2012-2013.
- At April 2013, 341 net square metres of retail floor space remain outstanding.

Holiday Lets

- Within the Shifnal South and Cosford Ward, 0 holiday lets were completed during 2012-2013.
- At April 2013, 1 holiday let unit remains outstanding.

Unemployment and Labour Market

Unemployment

- At the time of the Census, there were 100 Shifnal South and Cosford residents who were unemployed but available for work. This is 2.5% of the 16-74 year old population, compared to 3.3% for Shropshire.
- 30 young people (aged 16-24) were unemployed, plus 20 who were aged 50 to 74.
- Long term unemployment is also an issue – 28.0% of all unemployed people were classed as long-term unemployed in 2011. This is the equivalent of 28 people.

Labour Force

- 3,137 Shifnal South and Cosford residents aged 16-74 are economically active.
- 30.7% of the Shifnal South and Cosford population has level 4 or above qualifications compared with 27.5% in Shropshire and 27.4% in England.
- The number with no formal qualifications at all stands at 631 people – at 14.4% of the population (aged over 16), this compares with the county average of 22.5%.
- 57.9% of the population work in standard occupation classifications 1-3 (managers, directors and senior officials, professional, associate professional and technical) and 8.9% work in standard occupation classifications 8 and 9 (process, plant and machine operatives and elementary occupations)

Travel to Work (Census 2011)

- 8.6% of the population in Shifnal South and Cosford are self-employed, and 5.14% work from home compared with 5.6% for Shropshire.
- The car is used as the main means of travel to work for 41.52%, while 3.19% use public transport.

Crime and Anti-Social Behaviour

Source: West Mercia Recorded Statistics, 2014

- There were 94 crimes in Shifnal South and Cosford ward in the period April to July 2013. The majority of these crimes occurred in the categories of theft and handling stolen goods (35.1%) criminal damage (10.6%), domestic burglary (1.1%), burglary other (20.2%), theft from a vehicle (8.5%) and violence against the person with injury (7.4%).
- The majority of crime occurred in the town centre.
- There were 18 incidents of Anti-Social Behaviour (ASB) in the same period, the majority of these related to nuisance. The highest number of incidents occurred within the same area experiencing the highest incidence of crime. Youth related ASB accounted for 66.7% of incidents and alcohol related 33.3%.

If you require any further information, or have any other research requests, please contact:

Intelligence & Research Team, Shropshire Council,
Shirehall, Abbey Foregate, Shrewsbury, Shropshire, SY2 6ND

Email: research@shropshire.gov.uk

Tel: 01743 252562

Web: www.shropshire.gov.uk/facts-and-figures

Twitter: @ShropinFocus