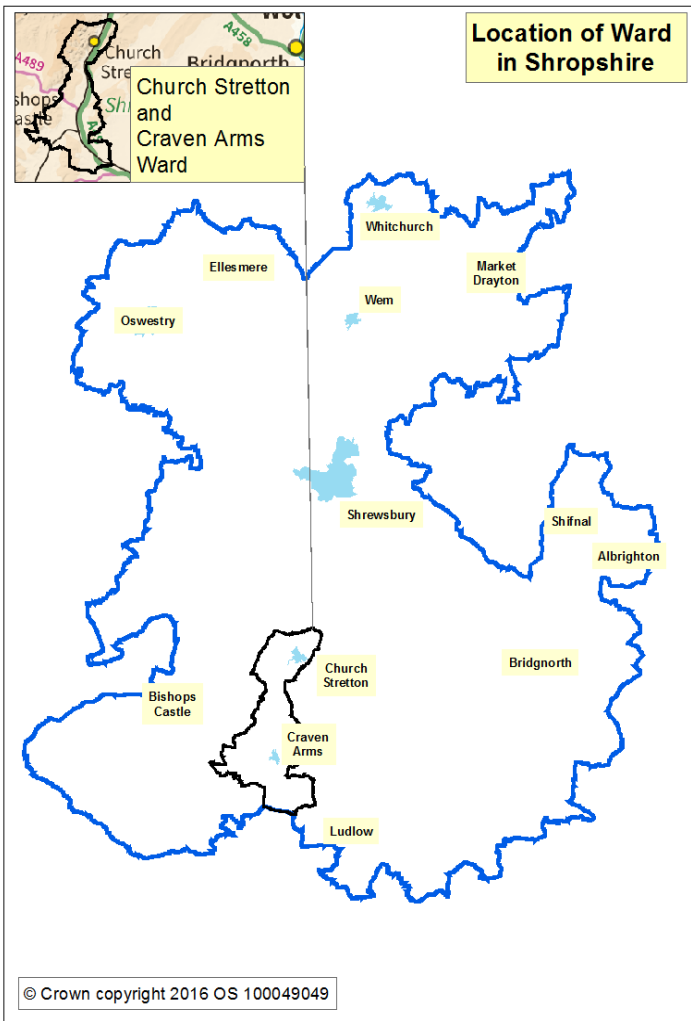


Church Stretton and Craven Arms Ward



Key Facts

- Total Population **9,105**
- Area **10,389** hectares
- Population Density **0.9** (Shropshire average **0.96**)
- Average Age - **48.0**
- Total Households **4,059**
- Total Dwellings **4,351**

Source: 2011 Census, Office for National Statistics © Crown Copyright 2016

Election Results - May 2017

| Name | Party | Votes |
|--------------------|-------------|-------------|
| Lee Chapman | Cons | 1579 |
| David Evans | Cons | 1536 |
| Stephen Hale | Green | 404 |
| Samantha Jones | Lib Dem | 815 |
| Steven Jones | Lib Dem | 711 |
| Hilary Wendt | Green | 388 |

Ward Councillors

Lee Chapman, Conservative



lee.chapman@shropshire.gov.uk

David Evans, Conservative

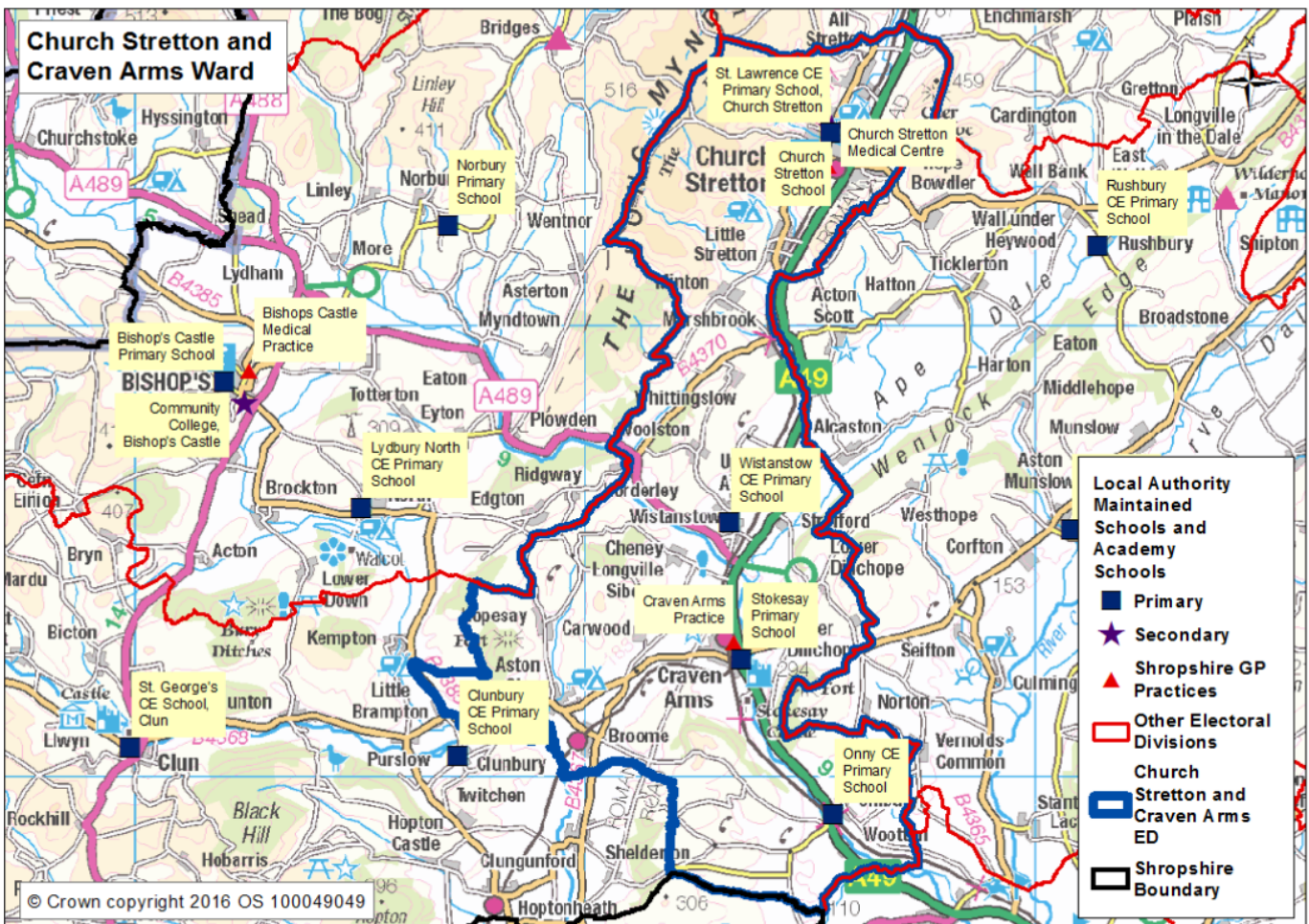


david.evans@shropshire.gov.uk

Parliamentary Constituency - Ludlow

MP - Philip Dunne, Conservative

Population and Diversity



Church Stretton and Craven Arms Ward is located towards the south of the county. The ward is a mix of rural and urban and contains a mixture of housing in terms of age and type. It's population density is similar to that of Shropshire as a whole. There is access to trains at both Church Stretton and Craven Arms, providing direct links to Shrewsbury, South Wales and Manchester. The A49 runs north to south through the ward, providing road links to Shrewsbury, the A5 and the M54 towards the West Midlands. The area is well served with local shops and other amenities.

For more information and interactive maps please visit Shropshire Council website :

www.shropshire.gov.uk/maps

For further information please visit : www.shropshire.gov.uk/facts-and-figures

Email research@shropshire.gov.uk

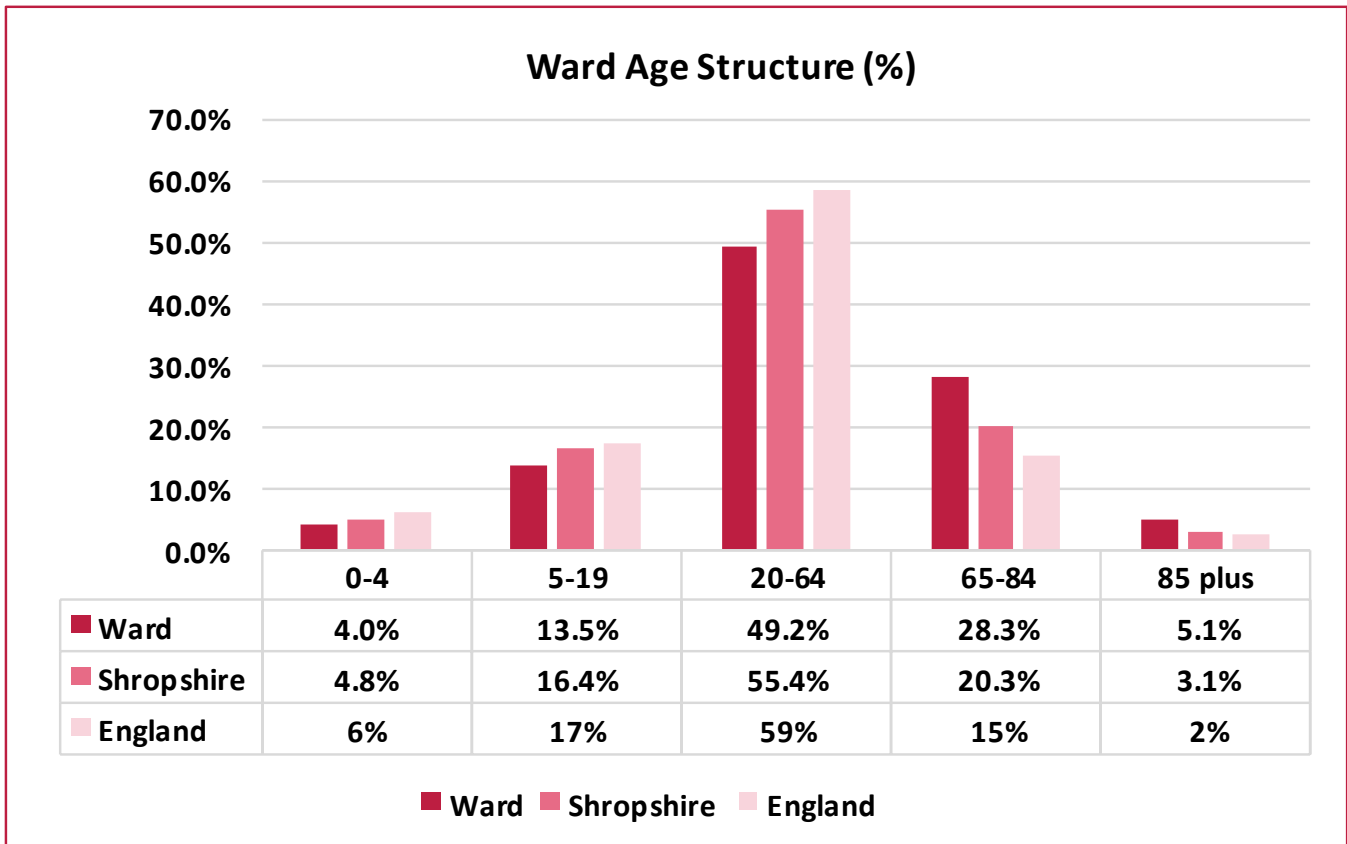
Other useful websites:

www.nomisweb.co.uk

www.ONS.gov.uk

Population and Diversity

Age Structure



Source: Office of National Statistic (ONS) Mid Year Estimates, 2015 - Ward Level Mid Year Population Estimates, Experimental Statistics 2016.



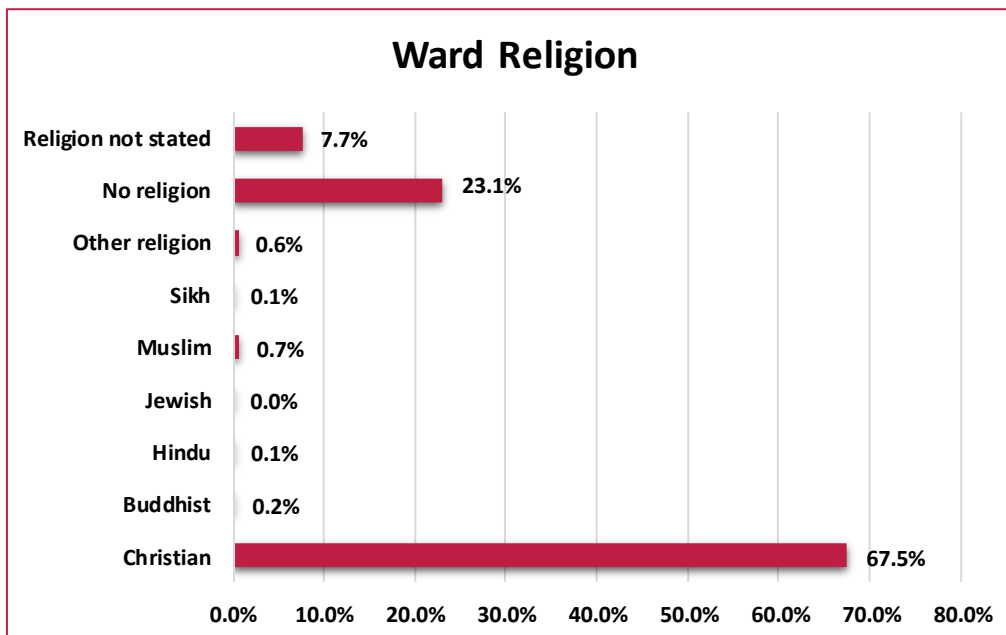
Mid year estimates for **2015**
51.1% female and **48.9% male**.

Church Stretton and Craven Arms has a **fewer people aged 0-4** and **5 to 19**, compared to both **Shropshire** and **England**.

Church Stretton and Craven Arms has a **higher rate of older people**, 65-84 and 85 plus, **compared** to both Shropshire and England.

Population and Diversity

Religion



67.5% of people were Christian. 23.1% had no religion.

The percentage of people who were Muslim or had an other religion was higher than the Shropshire average.

Source: 2011 Census, Key Statistics, Office for National Statistics (ONS).

| | Christian | Buddhist | Hindu | Jewish | Muslim | Sikh | Other religion | No religion | Religion not stated |
|------------|-----------|----------|-------|--------|--------|------|----------------|-------------|---------------------|
| Shropshire | 68.7% | 0.3% | 0.1% | 0.0% | 0.3% | 0.1% | 0.4% | 22.8% | 7.3% |
| England | 59.4% | 0.5% | 1.5% | 0.5% | 5.0% | 0.8% | 0.4% | 24.7% | 7.2% |

Ethnicity

95% of People were White British, similar to Shropshire but higher than England.

Fewer people from minority groups compared to England, same levels as Shropshire. Similar percentage of each ethnic minority groups as Shropshire as a whole.

| Area | White | White: British | Mixed/ multiple ethnic groups | Asian/Asian British | Black/African/ Caribbean/ Black British | Other ethnic group | BME Total |
|-------------------------------|-------|----------------|-------------------------------|---------------------|---|--------------------|-----------|
| Church Stretton & Craven Arms | 98.0% | 95.0% | 0.7% | 0.9% | 0.2% | 0.2% | 2.0% |
| Shropshire | 98.0% | 95.4% | 0.7% | 1.0% | 0.2% | 0.1% | 2.0% |
| England | 85.4% | 79.8% | 2.3% | 7.8% | 3.5% | 1.0% | 14.6% |

For further information on population or other Census data please visit:

<https://www.nomisweb.co.uk/>

<https://shropshire.gov.uk/facts-and-figures>

<https://www.ons.gov.uk/>

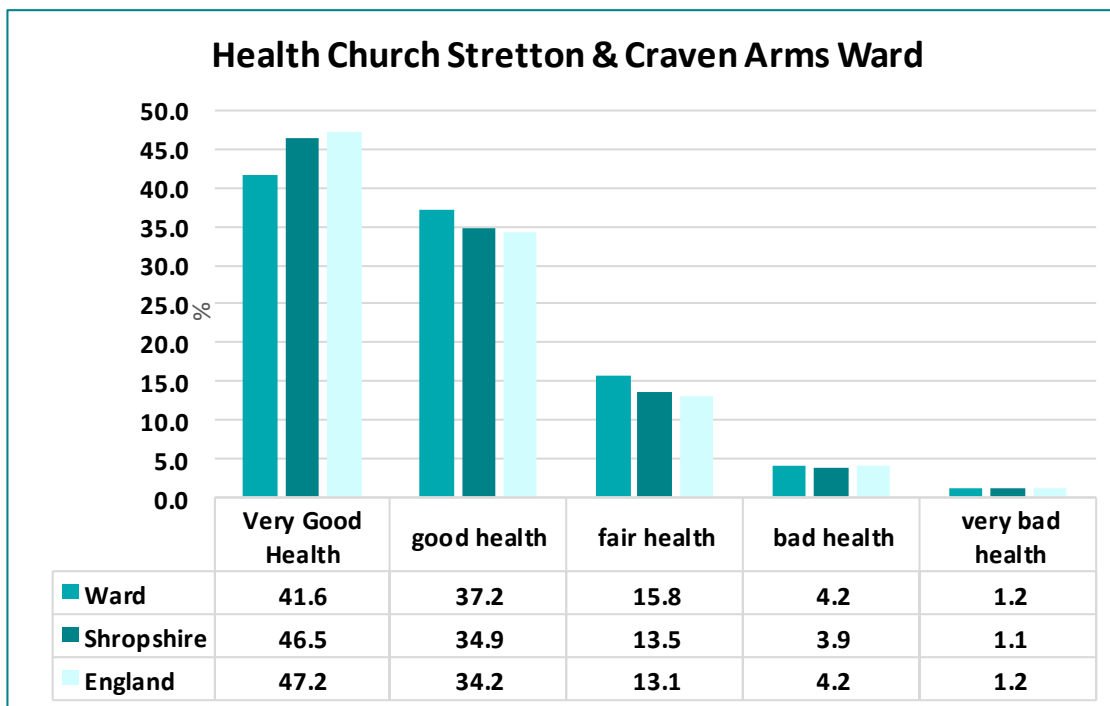
Health

Long Term Limiting Illness

9.6 % of People had a **Long Term Health Problem or Disability** which Limited their Life a lot. **Higher** than the **Shropshire average of 8.4%**.

Source: 2011 Census, Key Statistics, Office of National Statistics (ONS).

Health Condition



At the time of the 2011 Census, **79%** of residents in Church Stretton and Craven Arms Ward, said that they felt they were **in very good or good health**. This was **Lower** than the Shropshire and England **average of 81%**.

Provision of Social Care

| | Provide 1 to 19 hours unpaid care a week | Provides 20 to 49 hours unpaid care a week | Provides 50 or more hours unpaid care a week |
|-------------------------------|--|--|--|
| Church Stretton & Craven Arms | 8.9% | 1.5% | 2.8% |
| Shropshire | 7.5% | 1.3% | 2.4% |
| England | 6.5% | 1.4% | 2.4% |

8.9% of people provided in Church Stretton and Craven Arms Ward **unpaid care for 1-19** hours per week, this was **higher** than **Shropshire as a whole**.

Qualifications and Jobs

Qualifications

| Qualifications | Ward | Shropshire | England and |
|----------------------|------|------------|-------------|
| Level 1 | 14.1 | 15.4 | 15.2 |
| Level 2 | 18.1 | 19.4 | 17.2 |
| Level 3 | 14.2 | 14.7 | 14.5 |
| Level 4/5 | 32.8 | 29.4 | 29.7 |
| Other qualifications | 6.9 | 7.1 | 8.6 |
| No qualifications | 13.9 | 14 | 15 |

According to the Census 2011, **32.8%** of residents had a level 4 qualification or above, greater than Shropshire average of **29.4%**. There were fewer residents with low level qualifications than for Shropshire as a whole. **13.9%** had no qualifications compared to Shropshire figure of **14.0%**.

Source: 2011 Census, ONS, Highest Level of Qualification Population aged 16-64.

For further information on qualification levels and definitions visit Office of National Statistics (ONS) <http://www.ons.gov.uk/employmentandlabourmarket/peopleinwork/employmentandemployeetypes/articles/qualificationsandlabourmarketparticipationinenglandandwales/2014-06-18#background-notes>

Economic Activity

The employment status of Church Stretton and Craven Arms residents at the time of the 2011 Census showed **77.7%** of residents were economically active (this includes people who are both employed and actively seeking employment), this was lower than the Shropshire figure of **80.1%**. Of those who were economically active **73.9%** were in employment, **18.4%** were self-employed and **3.8%** were unemployed. This is compared with **75.8%**, **13.5%** and **5.4%** respectively for Shropshire.

22.3% of residents were economically inactive (these are people who are not seeking a job, and include those who are retired, full time students, looking after family or long term sick). This figure was higher than the Shropshire level of **19.9%**.

Unemployment

The Jobseeker's Allowance (JSA) is payable to people under pensionable age who are available for, and actively seeking work. In October 2016 **0.7%** of resident people aged 16-64, were claiming JSA, this was lower than the Shropshire figure of **1.1%** and **1.8%** for Great Britain.

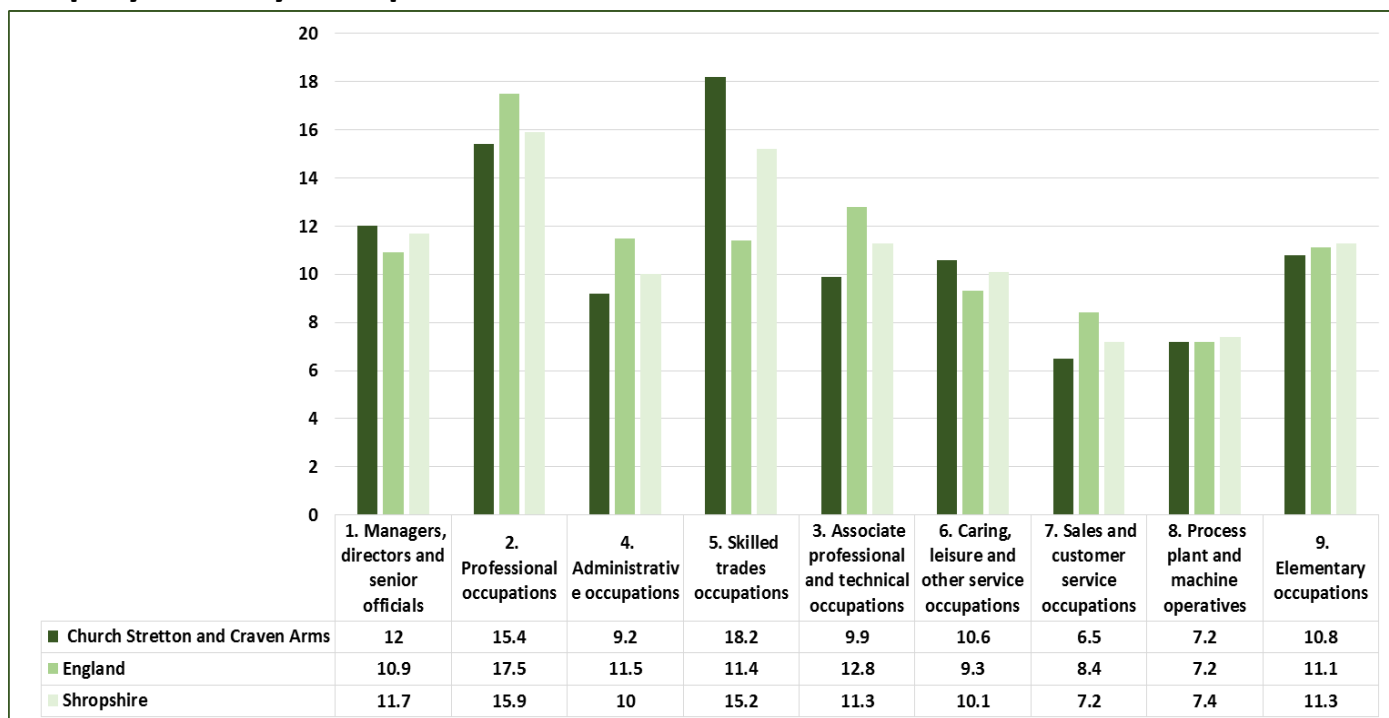
For more information please visit:

<https://www.nomisweb.co.uk/>

<https://www.nomisweb.co.uk/reports/lmp/la/contents.aspx>

Qualifications and Jobs

Employment by Occupation



Businesses and Employment

- **3,200** jobs in the ward
- **653 businesses** (Source: Mint 2015)

- **18.2 %** of residents were employed in Skilled trades occupations (greater than for Shropshire as a whole **15.2%**)
- Fewer people work in Associate professional and technical occupations, **9.9%** compared to **11.3%** for Shropshire

Travel to Work

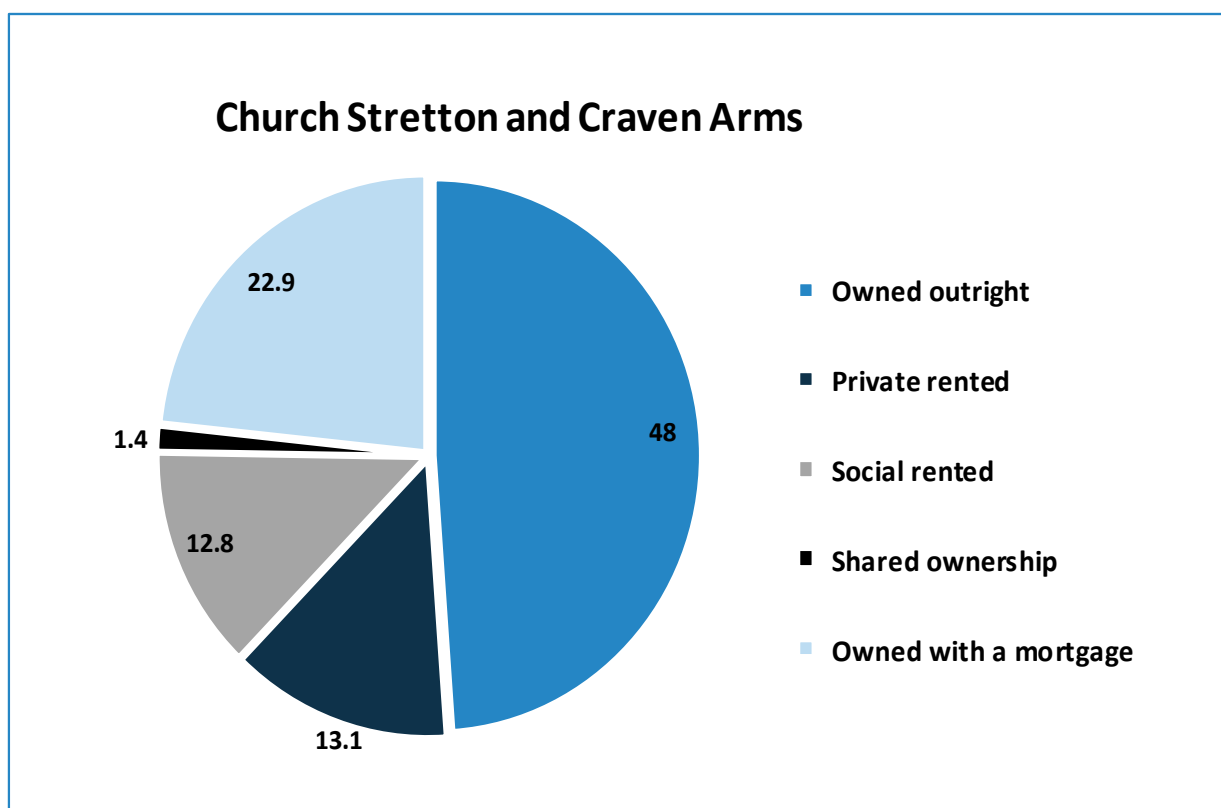
- **16.5%** of residents were self employed
- **7.9%** work from home (compared to **5.6%** for Shropshire)
- **41.2%** use the car as main travel mode to work
- **2.0%** used public transport

Housing

4,351 Dwellings and 4,059 Households

20 Communal Establishment with 140 residents

Housing Tenure



Source: 2011 Census, Key Statistics, Office for National Statistics, © Crown Copyright 2017.

The largest proportion (**48%**) of houses in Church Stretton and Craven Arms Ward were owned outright. This was higher than Shropshire (**38.6%**). **12.8%** of households were social rented housing, this was fewer than for Shropshire as a whole (**13.5%**) and fewer than for England (**17.7%**). Fewer households in Church Stretton and Craven Arms Ward were private rented (**13.1%**) compared to **15%** for Shropshire.

Housing Type

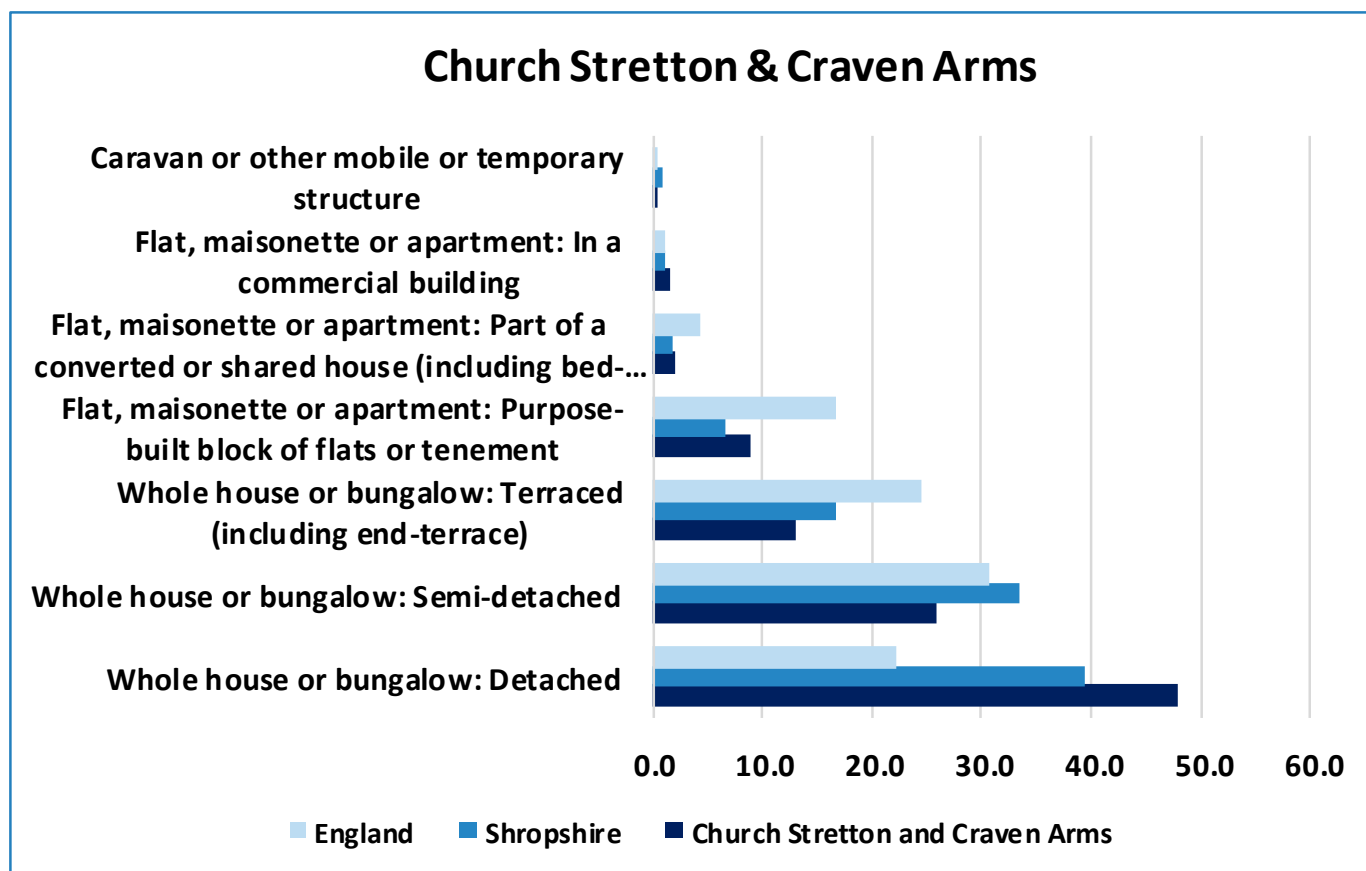
A greater number of Church Stretton and Craven Arms household spaces were detached properties (**47.9%**) compared to Shropshire as a whole (**39.5%**).

Fewer household spaces were semi-detached (**25.9%**) compared to Shropshire as a whole (**33.4%**).

Fewer household spaces were terraced (including end-terrace), (**13.0%**) compared to Shropshire (**16.8%**).

Housing

Housing Type



Housing Composition

30.8% of households were One Person Households greater than the Shropshire average (**28.9%**) and England (**30.2%**).

4.1% of households were Lone Parent with dependent children lower than the Shropshire average (**5.2%**) and England (**7.1%**).

17.6% of households were One Person Pensioner aged 65 and over, greater than the Shropshire average of (**13.9%**) and England (**12.4%**).

12.2% of households were married couples with dependent children lower than the Shropshire average of (**14.9%**) and England (**12.3%**).

3.2% of households were co-habiting couples with dependent children lower than the Shropshire average of (**4.2%**) and England (**4.1%**).

Community Safety

Crime levels in Shropshire are **very low compared to national levels**. Crime and ASB are **low** in Church Stretton and Craven Arms Ward. Relative to the rest of Shropshire, Church Stretton and Craven Arms had the **25th highest crime rate** per 1,000 population of all **63** Shropshire Wards.

Crime per 1000 Population in Church Stretton and Craven Arms Ward was **41.6**, **slightly lower** than Shropshire average of **44.9** and **lower** than England and Wales **78.4**.

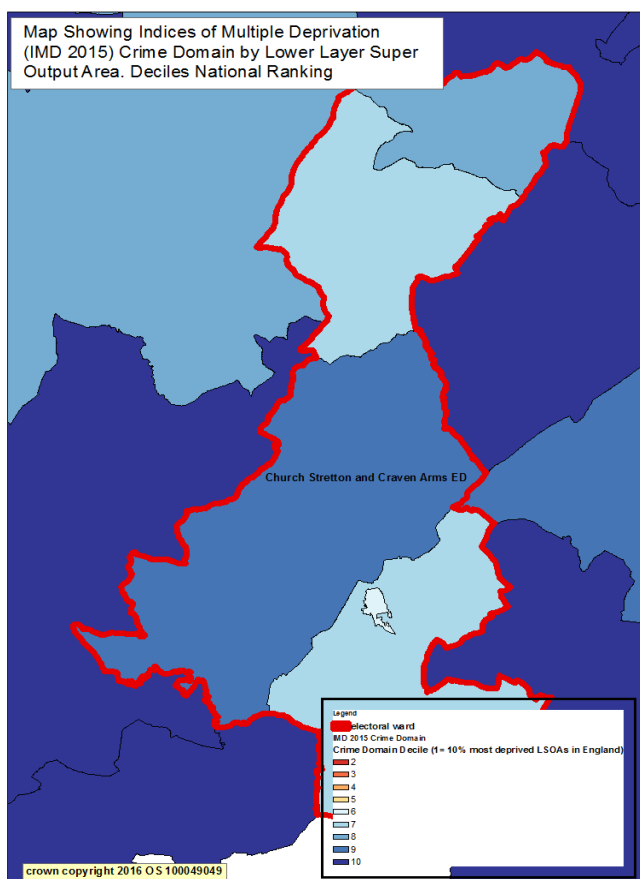
Source: Police Recorded Crime Data and Crime in England and Wales Statistical Bulletin, ONS, July 2016, year end 2016

IMD 2015 Crime Domain

The **Crime Domain measures** the **risk** of personal or material **victimisation** at local level.

The indicators:

- The rate of **violence** per 1,000 at risk population
- The rate of **burglary** per 1,000 at risk properties
- The rate of **theft** per 1,000 at risk population
- The rate of **criminal damage** per 1,000 at risk population



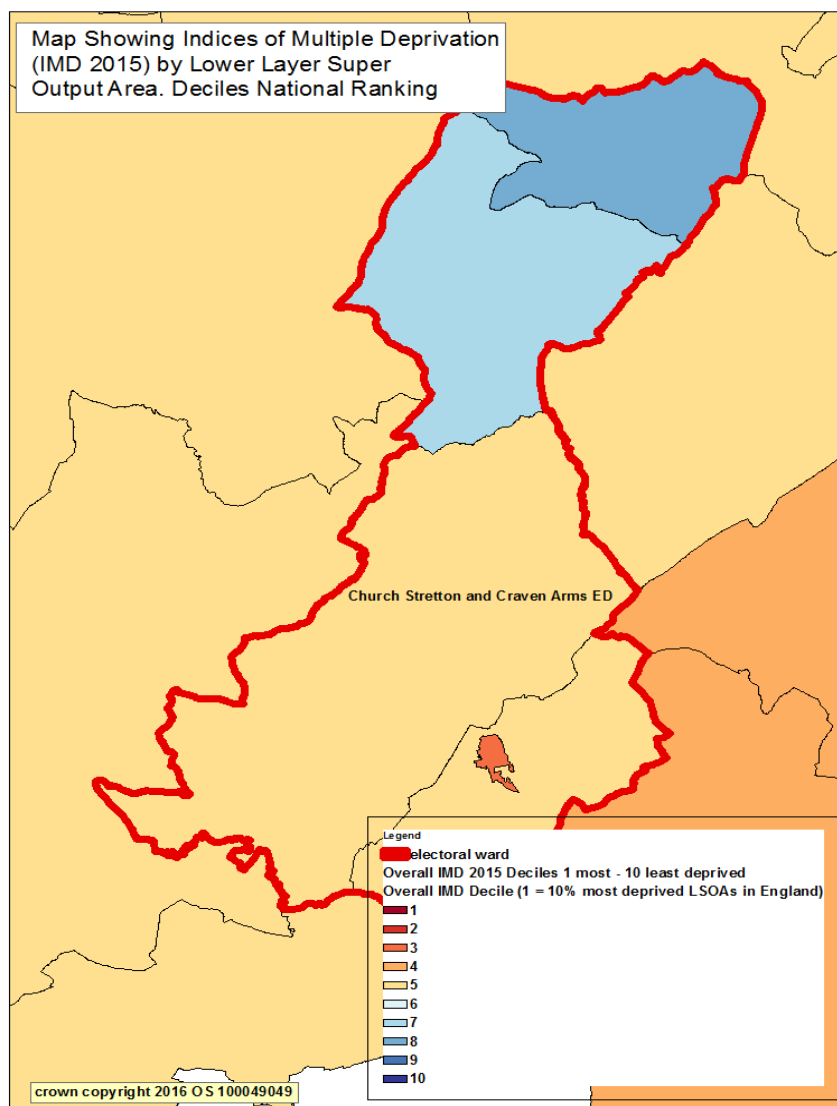
Church Stretton and Craven Arms Ward has **low** levels of **crime** compared to national rankings.

When looking at the five lower super output areas (Ilsoa's) which cover the ward. These areas are within **decile 8, 9 and 10** (decile one being the highest, decile 10 being the lowest) when compared with national levels.

Index of Multiple Deprivation (IMD 2015)

The Index of Multiple Deprivation (IMD 2015) is designed to identify areas where communities lack resources and are in need. To do this, seven factors are considered, which are:

- Income deprivation
- Employment deprivation
- Health deprivation and disability
- Education deprivation
- Barriers to housing and services
- Crime
- Living environment deprivation



There are 5 Lower layer Super Output Areas (LLSOA) which partially cover Church Stretton and Craven Arms .

These areas fall into the 3rd 5th 7th and 8th least deprived deciles nationally. The largest areas fall into the 5th decile.

Source: IMD 2015, Department for Communities and Local Government, Crown Copyright, 2016.