

Countryside and Rights of Way Act 2000

THIS NOTICE AFFECTS YOUR OPEN ACCESS RIGHTS OVER THIS LAND

Open access under this Act is excluded on the land edged in Black on the map below

Form of Restriction: No Public Access

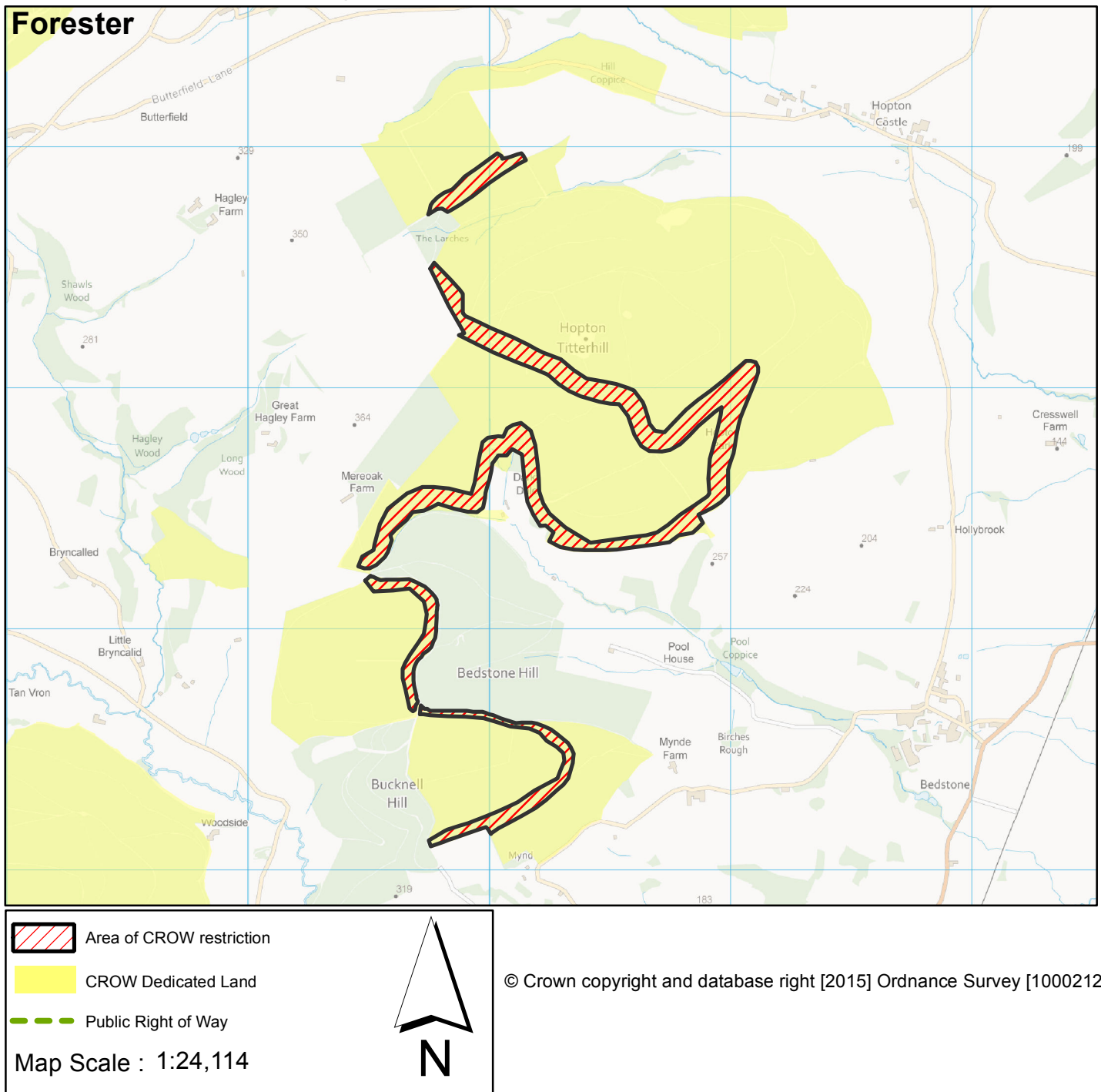
Period of Restriction: 1st September to 3rd September 2017

This exclusion is necessary for: PUBLIC SAFETY REASONS

This does not affect how you use any public rights of way across the land

Case Number: 2017078475

Map centred on national grid reference: SO 3518 7673



For further information or if details in this notice are incorrect please contact westengland@forestry.gsi.gov.uk or write to Forestry Commission, Bank House, Bank Street, Coleford, Gloucestershire, GL16 8BA or phone us on 0300 067 4800.