



Place Plan for Bridgnorth & surrounding area

2015-2016

CONTENTS

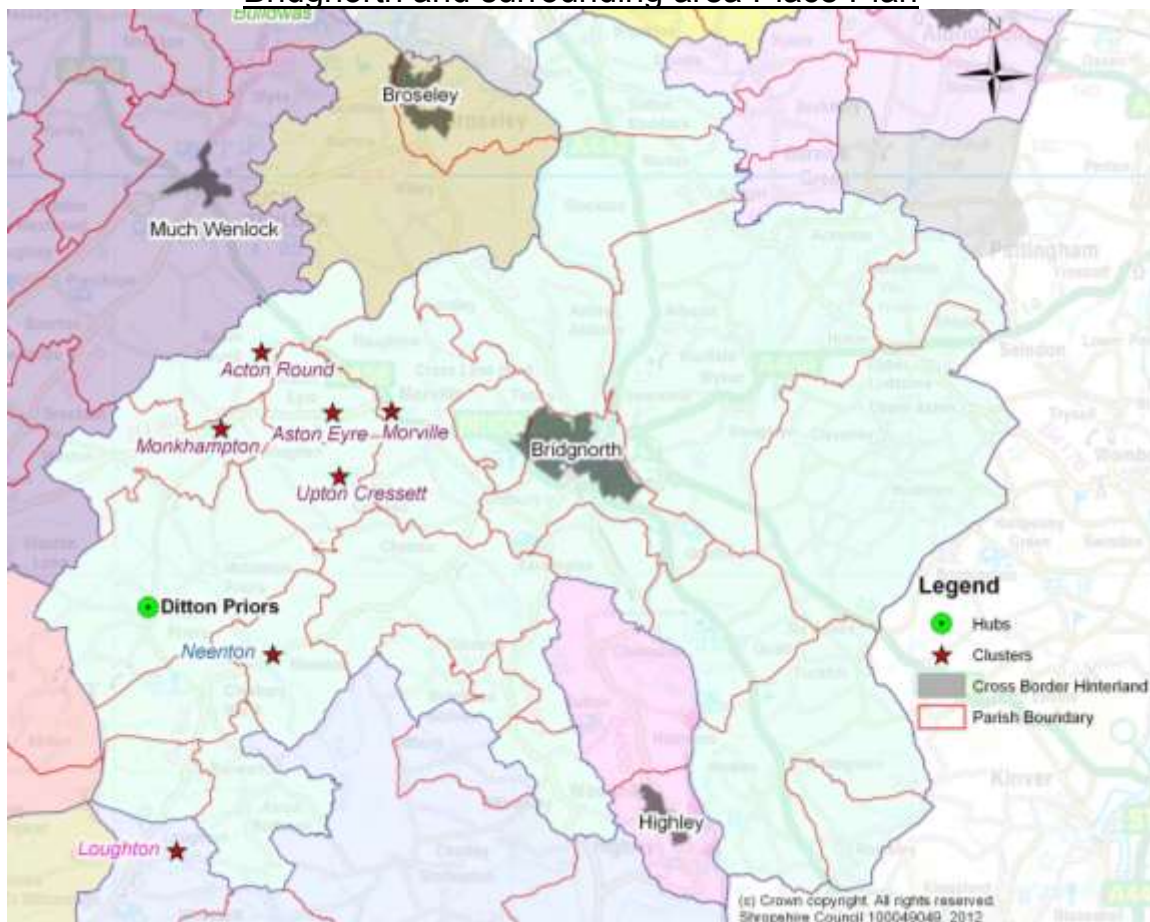
1. INTRODUCTION.....	2
1.1 What is this document?.....	2
1.2 What are Place Plans?.....	2
1.3 How are the Place Plans used?.....	3
1.4 How are the Place Plans structured?.....	3
1.5 Place Plan links to planning and locality commissioning.....	3
2. COMMUNITY LED PLANNING IN BRIDGNORTH AREA.....	6
2.1 Bridgnorth Place Plan Area.....	6
2.2 Summary of community priorities within Bridgnorth Town.....	6
2.3 Summary of community priorities within the surrounding area.....	8
3. DEVELOPMENT AND ASSOCIATED INFRASTRUCTURE REQUIREMENTS.....	11
3.1 Vision to guide development in the Bridgnorth Place Plan Area.....	11
3.2 Associated Infrastructure Requirements.....	12
Bridgnorth Town – Development related infrastructure requirements.....	14
Community Hubs – Development related infrastructure requirements.....	23
Community Clusters – Development related infrastructure requirements.....	26
Rural Hinterland – Development related infrastructure requirements.....	30
4. WIDER INVESTMENT PRIORITIES IN BRIDGNORTH PLACE PLAN AREA.....	52
Bridgnorth Town – Wider investment priorities.....	52
Community Hubs – Wider investment priorities.....	63
Community Clusters – Wider investment priorities.....	65
Rural Hinterland – Wider investment priorities.....	67
APPENDIX A: COMMUNITY ENGAGEMENT AND CONSULTATION FOR BRIDGNORTH PLACE PLAN AREA.....	85
Community Led Plans.....	85
Local Joint Committee.....	89
Other Community Consultations.....	90
APPENDIX B: BRIDGNORTH PROFILE.....	95
Social & Demographic Characteristics.....	95
Housing and Households.....	96
Deprivation.....	Error! Bookmark not defined.
Transport & Infrastructure.....	96
Natural and historic environment.....	97
Further information about Bridgnorth available online:.....	97

1. INTRODUCTION

1.1 What is this document?

- 1.1.1 This document is the *Bridgnorth and surrounding area Place Plan*. It summarises and prioritises the local infrastructure needs which are required to support the sustainable development of the area; and identifies the wider investment needs to assist delivery of the community's vision and aspirations.
- 1.1.2 The area covered within this plan is identified within the Figure below.

Bridgnorth and surrounding area Place Plan



1.2 What are Place Plans?

- 1.2.1 The Place Plans are aimed at ensuring the delivery of sustainable places in Shropshire. They recognise that sustainability is based on many different factors and that what is needed to make and maintain a sustainable community in one place may differ in another. As such, the Place Plans list the priorities, needs and aspirations on a place by place basis for each of Shropshire's communities.
- 1.2.2 There are 18 Place Plans in Shropshire. Each Place Plan is based around one of Shropshire's 18 main towns and its wider hinterland, which comprises Community Hubs, Community Clusters and rural parishes within the surrounding countryside (Rural Hinterland).
- 1.2.3 The Place Plans are 'live' documents that are informed by an 'annual conversation' with Town and Parish Councils, infrastructure and service

providers. As such, the Place Plans provide an up to date record of infrastructure and investment needs within an area and those priorities which should assist in providing a focus for delivery in the year ahead.

1.3 How are the Place Plans used?

1.3.1 The Place Plans provide an important evidence base to:

- **Support delivery of Shropshire's Local Plan**- *ensuring new development is supported by the necessary infrastructure, including identifying requirements for development contributions.*
- **Assist in informing planning decisions**- *forming a material consideration for planning applications.*
- **Coordinate actions and inform difficult decisions**- *where future resources should be targeted, by Shropshire Council and partner organisations.*
- **Inform local partnership working** – *ensuring an agreed set of local priorities.*
- **Assist with external funding bids**- *providing evidence of local investment needs and priorities*
- **Provide transparency to local communities**- *identifying where local investment is being targeted.*

1.4 How are the Place Plans structured?

1.4.1 Each Place Plan consist of five key sections, these are:

1. Introduction

The role of Place Plans and the communities covered within the Development Priorities.

2. Community led planning within the Place Plan area

Summary of the community vision and priorities within the Place Plan area identified through community led plans and wider consultation work with the local community.

3. Development and associated infrastructure requirements

Summary of the development plan for the area, as identified in Shropshire's Local Plan and the associated infrastructure needs and priorities required to ensure this growth is sustainable, including a plan of how these may be delivered.

4. Wider investment priorities within the Place Plan area

Summary of the identified investment needs and priorities required to support the wider sustainability of communities within the Place Plan area.

5. Place Plan Profile

Summary of key data for the Place Plan area, to provide background context to the locality and assist in informing future decision making on infrastructure and investment priorities. This is provided in Appendix B.

1.5 Place Plan links to planning and locality commissioning

Planning

1.5.1 The Place Plans form part of Shropshire's Local Plan, outlining the infrastructure requirements which are needed to support the level and location of development, as outlined in Shropshire's adopted Core Strategy and the Site Allocations and Management of Development (SAMDev) Plan.

- 1.5.2 As Shropshire’s Local Plan seeks to link new development to the provision of local community benefits, many of the policies within the Core Strategy and SAMDev Plan refer to the need to consider the local aspirations set out within the Place Plans. As such, the Place Plans are an important material consideration for planning applications.
- 1.5.3 In addition, the Place Plans provide the framework for the targeted use of developer contributions, including design, S106 and CIL. In particular, the infrastructure priorities identified within the Place Plans informs the content of the CIL Regulation 123 List, which sets out those infrastructure needs which will be delivered through the use of CIL.

Please Note: The CIL Regulation 123 List is updated annually, and infrastructure not included within this list, can still benefit from CIL funds in the future.

Locality Commissioning

- 1.5.4 Shropshire Council is committed to locality commissioning whereby there is a strong focus on working with local communities to find out what is important to them and ensuring local services are targeted appropriately. The Place Plans are central to Shropshire’s locality commissioning approach, as they provide the local evidence base of investment needs and priorities.

1.6 Supporting Shropshire’s economic growth and the strategic priorities of the Marches LEP

- 1.6.1 The Marches Local Enterprise Partnership includes a number of priorities to drive strategic economic growth in Shropshire. The Place Plans help to support delivery of the LEP’s economic growth priorities which are:

Supporting Business - We will create an exceptional business support environment for aspiring growth businesses through access to finance and incentives to innovate. We will promote the Marches as a business investment location

Physical Infrastructure - We will provide a compelling business investment offer with a progressive planning framework and infrastructure fit for tomorrow’s business needs. This priority will include supporting the environment.

Skills Investment - We will support employers to develop themselves and their workforce and to provide employment opportunities for young people.

Low Carbon Economy - We will drive the transition to a high value, low carbon economy, maximising the opportunity in new technologies, reducing environmental costs to business and recognising our environment as an economic asset.

Social Inclusion - We will support socially excluded and marginalised groups by removing barriers to their participation in activities that will improve their economic well-being.

- 1.6.2 The needs at a local level for fostering enterprise, business start-up, business competitiveness and expansion, investor development, inward investment, key account management and high growth business sector development is supported through a package of free business support, a wide range of financial incentives and the provision of economic infrastructure such as

business parks, industrial estates and small and medium sized work-shops and incubator office space. Information is available from Shropshire Council's Business and Enterprise Team.

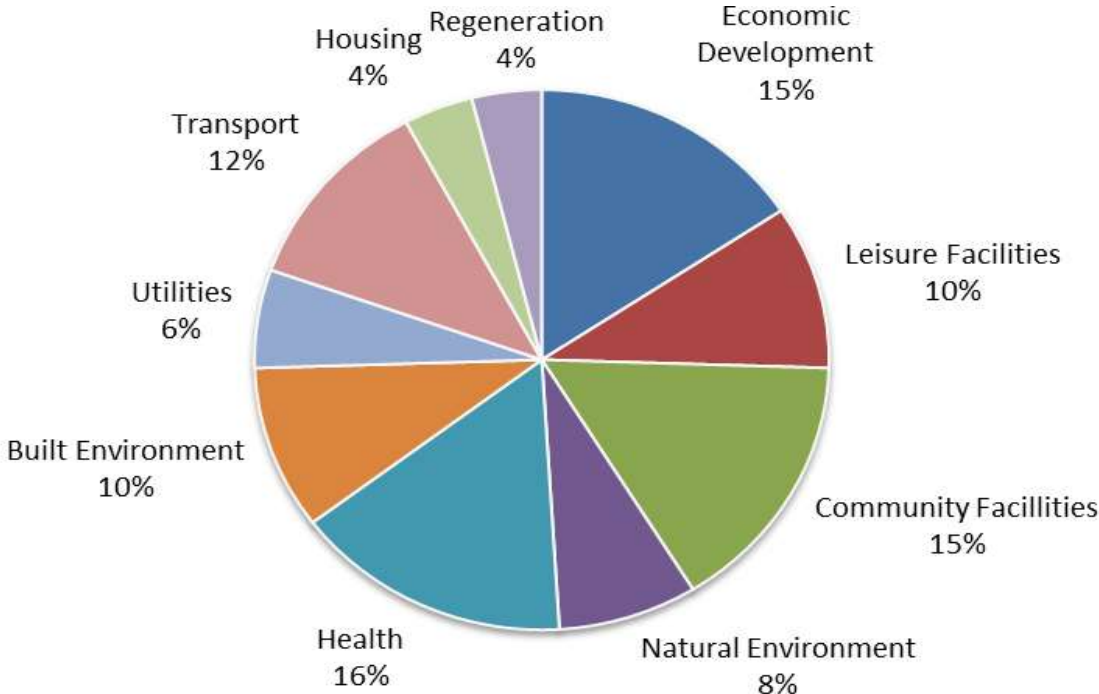
2. COMMUNITY LED PLANNING IN BRIDGNORTH AREA

2.1 Bridgnorth Place Plan Area

- 2.1.1 A number of community led plans have been developed for local communities within the Bridgnorth Place Plan area. These provide a key source of information when considering infrastructure and investment needs within an area and as such are an important basis for the Place Plans.
- 2.1.2 Appendix A provides detailed information on the community’s needs and priorities identified through the various community led plans; Local Joint Committees; and other community consultations that have occurred within the Place Plan area.
- 2.1.3 However, to provide a broad understanding of the areas of interest, the below overview summarises those community priorities and key areas of interest set out in detail in Appendix A. This summary has been split between:
 - Bridgnorth Town; and
 - Surrounding Area (including Hubs, Clusters and rural parishes).

2.2 Summary of community priorities within Bridgnorth Town

Summary of community priorities - by type, identified through community consultation in Bridgnorth (as identified in Appendix A).



2.2.1 The above summary can be broken down into the following key headlines:

Transport

- Car parking issues – controlled parking/free parking/Park and Ride
- Traffic Management programme for improvements to pavements and roadways
- Improvements to bus services and bus shelters
- Road safety, speeding HGVs
- Better Signage

Community Crime and Safety

- Speed limit enforcement
- Reduce anti-social behaviour
- Improve public safety at night and during the day, town centre and residential policing
- Police and community safety
- Police/ emergency services

Children and young people

- Activities for children and young people e.g. youth clubs, groups, shelters, etc
- Improvements to play equipment
- Retention of young people in the Town

Education

- Adult education
- Skills development and apprenticeship schemes
- Learning and training opportunities

Culture, Sports and Leisure

- Develop new leisure facilities
- Greater use of local leisure/sports facilities e.g. Theatre on the steps, Bandstand, Rugby club, football, tennis, cricket club facilities
- Greater use of the River Severn
- Arts, Cultural, Music, Heritage events

Environment

- Street Scene, Litter, emptying public bins, refuse collection, fly tipping and dog fouling
- Riverside enhancement, maintenance and works

Economy and tourism

- Support local businesses, shops, restaurants and public houses
- Support tourism via more publicity and events
- Improve shop frontage and signage
- Provide job opportunities
- Assist new business start-ups and encourage high skill employers

Health and well-being

- Continued level of service at Bridgnorth Medical Practice
- Continued level of services at Bridgnorth Hospital
- Maintain existing levels of social care
- NHS Dental Services

Heritage

- Maintain and enhance historic buildings
- Castle Walk improvement programme
- Repair and maintain Bridgnorth Steps

Communication

- Maintain and improve the library and information centre
- Information board/map at every car park entrance showing where other car parks are, toilets, hospital, police

Development

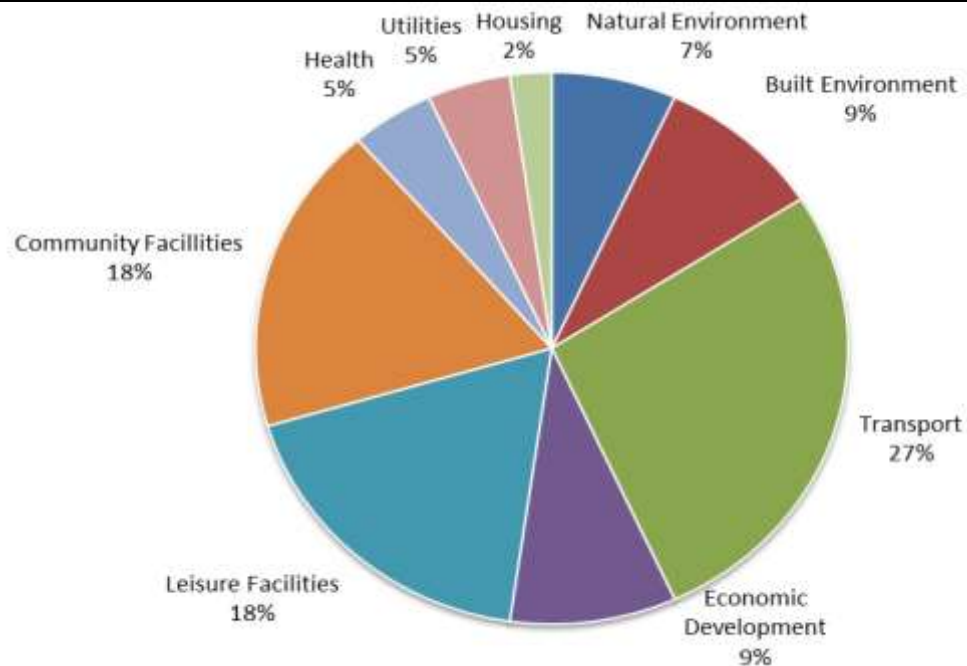
- Increase affordable housing that is also appropriate housing that meets the needs of the young
- Encourage provision of rented housing, flats/ apartments, social housing for local needs, retirement homes, residential care homes and sheltered housing

Infrastructure

- Improvements to Town Centre/ parking/toilets /information
- Better use of existing community building in Bridgnorth
- Broadband

2.3 Summary of community priorities within the surrounding area

Summary of community priorities - by type, identified through community consultation in Bridgnorth surrounding area (as identified in Appendix A).



2.3.1 The above summary can be broken down into the following key headlines:

Transport

- Road safety, speed and HGVs
- Improved rural transport services
- Road improvements

Community Crime and Safety

- Policing and community safety issues

Children and young people

- Activities for children and young people e.g. youth clubs, groups, shelters etc
- Improvements to play equipment

Education

- Social activities and lifelong learning for both young people and adults
- Vital need for an educational/ vocational training centre to cater for the eastern region
- Learning and training opportunities

Culture, Sports and Leisure

- Public Rights of Way/ walking and rambling activities/ walking and cycling networks
- Provision of sport, leisure, faith, village hall, community facilities and activities
- Improve community identity
- Open spaces and play areas

Environment

- Controls on noise pollution and light pollution
- Trees, hedgerows and wildlife
- Encourage agriculture, environment, conservation, green space and countryside use
- Saving and generating energy
- Refuse collection, waste and recycling services
- Water drainage and flood measures

Economy and tourism

- Community facilities including the shop and Post Office
- Tourism activities
- Local economy, broadband and tourism
- Employment opportunities
- Job opportunities

Health and well-being

- Adult services, elderly services
- Health care provision
- Senior citizens groups and clubs

Heritage

- Arts and heritage events

Communication

- More communication
- Community events and Parish communications
- Communication: parish newsletter & website, regular articles in local press

Development

- Increase affordable housing that is also appropriate housing that meets the needs of the young
- Housing needs assessments in rural areas

Infrastructure

- Use and increase in facilities and services e.g. community centre/village hall, Café/pub/restaurant/toilets/garages/postal services/shops/rural transport
- Broadband speed and connectivity

3. DEVELOPMENT AND ASSOCIATED INFRASTRUCTURE REQUIREMENTS

3.1 *Vision to guide development in the Bridgnorth Place Plan Area*

- 3.1.1 Shropshire's Core Strategy (March 2011) sets out the strategic vision and objectives to guide development and growth for the period 2006-2026. This includes a vision for *Bridgnorth (Policy CS3)* and the surrounding *Hubs, Clusters (Policy CS4)* and *Rural Hinterland (Policy CS5)*, as follows:

BRIDGNORTH TOWN (Core Strategy Policy CS3)

Bridgnorth will provide a focus for development within the constraints of its location on the edge of the Green Belt and on the River Severn.

COMMUNITY HUBS (Core Strategy Policy CS4)

Community Hubs will have development that helps to rebalance rural communities by providing facilities, economic development or housing for local needs that is of a scale appropriate to the settlement.

COMMUNITY CLUSTERS (Core Strategy Policy CS4)

Community Clusters are comprised of two or more smaller settlements, where the combined settlements offer a range of services contributing to a sustainable community. Community Clusters will have development that helps to rebalance rural communities by providing facilities, economic development or housing for local needs that is of a scale appropriate to the settlement.

RURAL HINTERLAND (CORE STRATEGY POLICY CS5)

New development will be strictly controlled in accordance with national planning policies protecting the countryside and Green Belt. Subject to further controls over development that apply to the Green Belt, development proposals on appropriate sites which maintain and enhance countryside vitality and character will be permitted where they improve the sustainability of rural communities by bringing local economic and community benefits.

- 3.1.2 Within the Bridgnorth Place Plan area, there are a number of Community Hubs and Clusters:

Community Hubs

- Ditton Priors

Community Clusters

- Acton Round, Aston Eyre, Monkhopton, Morville and Upton Cressage
- Neenton

- 3.1.3 All remaining settlements within the Place Plan area form part of the Rural Hinterland.

- 3.1.4 Detailed proposals to deliver the strategic vision within the Core Strategy are contained within the Site Allocations and Management of Development (SAMDev) document which together with the Core Strategy forms Shropshire's Local Plan for 2006-2026.

3.1.5 The SAMDev Plan sets out the following detailed development policies for the Bridgnorth Place Plan area:

Settlement	Housing guideline	Employment guideline	Allocations
Market Town			
Bridgnorth	1,400 dwellings	19 hectares	<ul style="list-style-type: none"> • Land north of Wenlock Road, Tasley (200 dwellings and 6.3ha for other uses). • Land north of Church Lane, Tasley (300 dwellings). • Land at Tasley south of the A458 bypass (6.7ha of employment land – net of landscaping). • Land at Tasley south of A458 at Tasley (6.6 ha of employment land – net of landscaping). • Land at Old Worcester Road (1.5 ha of employment land), • Provision of a further 5 hectares of land to provide additional employment investment opportunities within the Place Plan area to support the strategic economic growth of Bridgnorth, the sustainable growth of the Hub and Clusters and to support the continuing sustainability of communities in the rural hinterland.
Community Hubs			
Ditton Priors	26 dwellings	N/A	Land opposite 6 Station Road (12 dwellings).
Community Clusters			
Acton Round, Aston Eyre, Monkhopton, Morville and Upton Cressage.	15 dwellings	N/A	N/A
Neenton	7 dwellings	N/A	Pheasant Inn.

3.2 Associated Infrastructure Requirements

3.2.1 To ensure new development is sustainable, it is important that it is supported by the necessary infrastructure.

3.2.2 The below table details the infrastructure requirements which have been identified as needed to support the level and location of development for the Bridgnorth Place Plan, as set out above. These infrastructure requirements have been identified through:

- Annual Place Plan ‘conversation’ with Town and Parish Councils and Shropshire Council elected Members
- Annual Place Plan ‘conversation’ with local infrastructure and service providers.
- Discussions with stakeholders regarding specific development sites

3.2.3 Whilst it is important that the Place Plan sets out all known infrastructure requirements, it is vital that these are prioritised in order to provide a focus for delivery. Core Strategy Policy CS9 (Infrastructure Contributions) provides the framework for prioritising infrastructure requirements, as follows:

- 1. Critical Infrastructure:** the essentials without which development cannot take place, such as utilities, water management and safe access.
- 2. Priority Infrastructure:** that which has been identified by the community as a particular priority at that point in time.
- 3. Key Infrastructure:** all other infrastructure not included in the previous two categories.

- 3.2.4 The below table also sets out the recommended mechanism for delivery, taking into account the roles and responsibilities of delivery partners and the regulations governing the use of different funding streams, including developer contributions.
- 3.2.5 However, whilst the Place Plan provide a framework for delivery, enabling the coordination of resources around an agreed set of priorities, it is important to recognise that not all the infrastructure items listed below may be deliverable at a particular point in time.
- 3.2.6 For infrastructure items to be delivered through the use of CIL funding (in full or part), it would usually be identified within the annual CIL Regulation 123 List.

Bridgnorth Town – Development related infrastructure requirements

Infrastructure Requirement	Level of Priority	Delivery Partner(s)	Timing of Delivery	Potential Cost / Funds Secured	Potential Funding		Notes
					Wider Sources	Developer Contributions	
BRIDGNORTH TOWN AND PARISH							
HOUSING AND COHESIVE, SUSTAINABLE COMMUNITIES							
Affordable housing provision	PRIORITY	Shropshire Council, Homes and Communities Agency, Registered Providers	Ongoing	N/A	N/A	Section 106	Within Shropshire, it is the Council's aspiration that all developments contribute to a sustainable mix of dwelling types, sizes and tenures. This will be either through on-site provision or payment of a sum to be used for provision of affordable housing.
ECONOMIC INVESTMENT AND OPPORTUNITY							
Facilitation of ICT/broadband technologies – Connecting Shropshire	KEY	Shropshire Council, Private sector delivery partner, Town and Parish Councils Commercial Infrastructure Providers		Initially £16.4 million. £8.2million secured from BDUK. £8.2 million secured from Shropshire Council.		CIL (Local)	Facilitation of ICT/broadband technologies is a community priority for many towns, villages and rural areas of Shropshire including Bridgnorth Town Council. Connecting Shropshire aims to provide a minimum of 2 Mbps to all Shropshire communities and as much superfast broadband as possible. The project will deliver to communities not proposed to get either basic broadband or superfast broadband under the private sector rollout and so assists commercial providers. The Town Council have highlighted that broadband is often poor within the town.
Provision of accessed and serviced employment / commercial land, Tasley	CRITICAL	Tasley Estates			Developer led	Section 106	Local Plan employment allocations to be delivered as part of strategic mixed use developments forming extension to western area of Bridgnorth town and providing upgraded highway junction to A458, relocated Livestock Market, commercial investment opportunities and new business park / industrial estate.
Relocation of Bridgnorth Livestock Market to a new accessed and serviced site south of	CRITICAL	Tasley Estates			Developer led	Section 106	Local Plan employment allocations to be delivered as part of strategic mixed use developments forming extension to western area of Bridgnorth town and providing a

Infrastructure Requirement	Level of Priority	Delivery Partner(s)	Timing of Delivery	Potential Cost / Funds Secured	Potential Funding		Notes
					Wider Sources	Developer Contributions	
A458, Tasley							relocated Livestock Market and facilitating new commercial investment opportunities on the existing Livestock market site.
Provision of accessed and serviced employment / commercial land, Bridgnorth.	CRITICAL	Shropshire Council,			Shropshire Council, The Marches Local Economic Partnership		Local Plan employment allocations also provide for an employment windfall allowance of up to 5 hectares which will require identification and provision of further employment land investment opportunities in Bridgnorth or the Place Plan area. This will help to support the strategic economic growth of Bridgnorth, the sustainable growth of the Hub and Clusters and support the continuing sustainability of communities in the rural hinterland.
Investment and improvement at Stanley Lane Industrial Estate	PRIORITY	Shropshire Council					New investment is required in the existing Stanley Lane Industrial Estate to improve the commercial offer of the buildings and environment for leasehold business premises with accessed and serviced employment / commercial redevelopment opportunities.
Improvement of employment opportunities	KEY	Shropshire Council, Further Education Colleges					Bridgnorth requires continuing business and financial support measures to contribute to the success of the proposed economic infrastructure on business parks and industrial estates. The Bridgnorth Town Plan has also identified the following improvements: Apprenticeship schemes, local courses, encouragement of businesses into the area, including high skilled, and exploring new ways to provide jobs for school leavers. The Town Council see this as urgent requirement.
SOCIAL AND COMMUNITY INFRASTRUCTURE							
On-site open space provision and maintenance to meet site design requirements and standards.	PRIORITY	Developers, Shropshire Council	Dependent on development	N/A		On-site design, Section 106	On-site design standards are identified within the Open Space Interim Planning Guidance (IPG) (Jan 2012) and Policy MD2 of the SAMDev Plan (not yet adopted). The Town Council have expressed a wish to be involved in discussions regarding provision of open space.

Infrastructure Requirement	Level of Priority	Delivery Partner(s)	Timing of Delivery	Potential Cost / Funds Secured	Potential Funding		Notes
					Wider Sources	Developer Contributions	
<p>Provision and maintenance of facilities and equipment for sport, recreation and leisure. This includes but is not limited to:</p> <ul style="list-style-type: none"> • Outdoor sports facilities. • Recreational facilities for children. • Allotments. 	PRIORITY	Shropshire Council, Town and Parish Councils	Dependent on development	N/A	Sport England, Fields in Trust	Neighbourhood Fund, CIL (Local)	<p>Provision to meet assessed need. The Playing Pitch Strategy has identified that:</p> <ul style="list-style-type: none"> • Bridgnorth has a number of multi-pitch sites and there is a need to identify priorities for them. • Bridgnorth should have a minimum of 1 multi-pitch site providing for competition and training, with good quality on-site changing and toilet provision, appropriate for, and accessible to, all user types. • Improvements to the quality of pitches are needed at Severn Park and Crown Meadow. • Improvements to ancillary provision are need at Friary Fields and Severn Park including short term investment in the Rugby Clubhouse, Severn Park . • In other areas quality of sites should be maintained and improved where necessary <p>The Bridgnorth Town Plan has identified:</p> <ul style="list-style-type: none"> • need for the development of a visitor centre with cafe and toilets at Severn Park • Potential for an increased use of the bandstand in the Castle Grounds. • The need for improvements to existing facilities and the formation of Park User/Friends groups to enable the community to develop and lead management. • The need for funding to support further activity centres for teenagers

Infrastructure Requirement	Level of Priority	Delivery Partner(s)	Timing of Delivery	Potential Cost / Funds Secured	Potential Funding		Notes
					Wider Sources	Developer Contributions	
Provision of a new site for Bridgnorth RUFC	PRIORITY	Bridgnorth RUFC, Shropshire Council, Bridgnorth Town Council, Energize (Shropshire, Telford and Wrekin County Sports Partnership), Sport England		£2 million	Sport England, Sale of land at current site.	Neighbourhood Fund, CIL (Local)	<p>The Playing Pitch Strategy has identified that there is a need to re-locate the club from the Severn Park Friary Fields site to an improved site, to sustain and help the club grow.</p> <p>Bridgnorth RUFC are a RUFC priority club. The Town Council understands that discussions regarding a move are still in the early stages.</p> <p>The relocation of Bridgnorth RUFC could also present opportunities for the planned provision of football facilities in the Bridgnorth area. There is no decision yet made about whether Bridgnorth RUFC stays in Bridgnorth or relocates. If the club stays at its current site there is no room for additional pitches to accommodate football.</p>
Development of football hub including 3g AGP	KEY	Shropshire Council, Bridgnorth Town Council, Energize (Shropshire, Telford and Wrekin County Sports Partnership), Football Association			Sport England,	Neighbourhood Fund, CIL (Local)	<p>The Playing Pitch Strategy has identified that there is a need to undertake a feasibility study of opportunities to improve the planned provision of football facilities in the Bridgnorth area. The development of a football hub with 3g AGP is regarded as a key objective by the Football Association and a Business Plan for the delivery of this facility is required as a medium term objective.</p> <p>The relocation of Bridgnorth RUFC could also present opportunities for the planned provision of football facilities in the Bridgnorth area. The relocation is not definite yet (see above).</p>

Infrastructure Requirement	Level of Priority	Delivery Partner(s)	Timing of Delivery	Potential Cost / Funds Secured	Potential Funding		Notes
					Wider Sources	Developer Contributions	
Bridgnorth Cricket Club – second ground	KEY	Shropshire Council, Bridgnorth Town Council, Energize (Shropshire, Telford and Wrekin County Sports Partnership), English Cricket Board			Sport England,	Neighbourhood Fund, CIL (Local)	The Playing Pitch Strategy has identified that there is a need for a second ground for Bridgnorth Cricket Club to continue to develop the skills and potential of its team and club.
Improvements of Crown Meadow	PRIORITY	Shropshire Council, Bridgnorth Town Council, Energize (Shropshire, Telford and Wrekin County Sports Partnership), Sport England				Neighbourhood Fund, CIL (Local)	The Playing Pitch Strategy identified that facilities need improvement. However, a number of improvements including teenage facilities (Playbuilder funded), a skatepark and provision of a football pitch have taken place. This site is on a long lease to Bridgnorth Town Council from Fields in Trust.
Purchase cemetery land	PRIORITY	Town Council				Neighbourhood Fund, CIL (Local)	This is an identified community priority. Tier 1 and 2 assessments have been carried out on potential land for a cemetery extension. Bore holes are about to be dug and monitored – from July 2015
Purchase allotment land	PRIORITY	Town Council				Neighbourhood Fund,	This is an identified community priority and further provision is being investigated and

Infrastructure Requirement	Level of Priority	Delivery Partner(s)	Timing of Delivery	Potential Cost / Funds Secured	Potential Funding		Notes
					Wider Sources	Developer Contributions	
						CIL (Local)	may be resolved through proposed development strategy for Bridgnorth.
Outdoor gym play equipment at Severn Park	PRIORITY	Town Council				Neighbourhood Fund, CIL (Local)	This is an identified community priority and further provision is being investigated by the Town Council who manage the land The Town Council has secured S106 through developer funding towards new play/gym equipment.
Replacement police sections station (only required if allocated development is delivered in this location)	KEY	West Mercia Police, Developers, Shropshire Council	5-10 years (dependent on level of development in SAMDev)	£3 million	From disposal of existing West Mercia Police station. Market value to be determined.		New sections station to be developed in conjunction with new housing development in Bridgnorth, which will be determined through the Site Allocations and Management of Development Document. West Mercia Police would dispose of existing site for residential use and put capital receipt generated towards cost of new station.
Review of primary school places to ensure sufficient provision	PRIORITY	Shropshire Council	N/A	N/A	N/A	N/A	An updated assessment of the effect on primary school places locally has been made based on proposed levels of development with delivery spread evenly over the remaining Plan period. This currently indicates that capacity will exist in the town overall to meet the demand. However, some funding may be required to bring existing pupil accommodation up to its full teaching capacity. The Town Council has raised concern about children travelling to school from the SAMDev allocated site and Wenlock Rise.
Review of secondary school places to ensure sufficient provision	PRIORITY	Shropshire Council	N/A	N/A	N/A	N/A	An updated assessment of the effect on secondary school places locally has been made based on proposed levels of development with delivery spread evenly over the remaining Plan period. This currently indicates that capacity will exist in the town overall to meet the demand. The Town Council are keen to ensure facilities are suitable for future pupils.
Replacement leisure	KEY	Shropshire	Ongoing			Neighbourhood	Provision of a swimming pool and sports hall.

Infrastructure Requirement	Level of Priority	Delivery Partner(s)	Timing of Delivery	Potential Cost / Funds Secured	Potential Funding		Notes
					Wider Sources	Developer Contributions	
centre		Council				Fund, CIL (Local)	In general the current site needs to be assessed and updated. Opportunity to provide a larger sports hall facility i.e. 6/8 courts which could meet both curriculum and community needs and sports hall. Retention of Endowed School / Bridgnorth Leisure Centre as sand based AGP. This Leisure Centre has been passed to HALO to manage.
Indoor Sports facilities	KEY	Shropshire Council, Sport England	Ongoing		Sport England	Neighbourhood Fund, CIL (Local)	The Indoor Facilities Strategy has recommended provision of indoor cricket facilities. The Indoor Facilities Strategy has recommended that there is potential to develop Bridgnorth Squash Club as a Performance Centre Sports facilities are to be designed to a minimum playing standard of 'fit for purpose' depending on the terminology of the various national governing sporting bodies and Sport England Guidance. The Bridgnorth Town Plan has highlighted that the community should have a greater role in the management of leisure facilities.
ENVIRONMENT AND CLIMATE CHANGE							
Sewerage network capacity	CRITICAL	Developers, Severn Trent Water	Dependent on development		Developers	N/A	Hydraulic modelling of the wastewater network is required in order to assess whether there is capacity within the network to meet development needs.
Assessment of local flood risk	PRIORITY	Shropshire Council, Environment Agency, Severn Trent Water	Ongoing	c£50,000	Flood Defence Grant in Aid	CIL (Local)	The Local Flood Risk Management Strategy has identified a number of properties in Bridgnorth that may be at risk of flooding. Central Bridgnorth area close to River Severn may require some form of flood defences.
Production of Operational Flood	PRIORITY	Shropshire Council,	Ongoing	£10,000		Section 106	In accordance with the Local Flood Risk Management Strategy the operational flood

Infrastructure Requirement	Level of Priority	Delivery Partner(s)	Timing of Delivery	Potential Cost / Funds Secured	Potential Funding		Notes
					Wider Sources	Developer Contributions	
Response Plan		Environment Agency, Severn Trent Water Bridgnorth Town Council					response plans, produced from condition surveys of the land drainage systems, will flag who is responsible for the maintenance of the systems which serve communities. The aim is to promote community awareness of these drainage systems such that communities can be more resilient. The Town Council see this as an urgent requirement.
Flood warning provision – installation of additional flood gauges	KEY	Environment Agency, Developers	Ongoing	£1,000 per dwelling Funding Secured: £0			This provision may require developer contribution or Environment Agency funding.
Additional electricity reinforcements for employment land	CRITICAL	Western Power Distribution	Ongoing	Ongoing – to be determined through SAMDev Funding Secured: £0			Determined through SAMDev and requires developer funded / Western Power Distribution funding. This assessment requires more details about the proposed developments in the town.
TRANSPORT AND ACCESSIBILITY							
Strategic junction improvements to Bridgnorth town to upgrade A458 / Wenlock Road T junction to increase capacity and safety	CRITICAL	Developer, Shropshire Council, Bridgnorth Town Council, Tasley Parish Council			Developer led	Section 106	Local Plan employment allocations to be delivered as part of strategic mixed use developments forming extension to western area of Bridgnorth town and providing upgraded highway junction to A458, relocated Livestock Market, commercial investment opportunities and new business park / industrial estate.
Junction capacity, sustainability and safety improvements, where necessary, to facilitate specific development sites	CRITICAL	Shropshire Council Bridgnorth Town Council				Section 106	To include: <ul style="list-style-type: none"> • Protection of Church Lane as a 'quiet lane' shared with pedestrians
Local highway improvements, including speed and safety, public realm enhancements	PRIORITY	Shropshire Council Bridgnorth Town				CIL (Local)	To include: <ul style="list-style-type: none"> • Improvements to Wenlock Road, with potential for a pedestrian crossing • Bus infrastructure and service

Infrastructure Requirement	Level of Priority	Delivery Partner(s)	Timing of Delivery	Potential Cost / Funds Secured	Potential Funding		Notes
					Wider Sources	Developer Contributions	
and sustainable travel		Council					improvements The Town Council has identified the need to: <ul style="list-style-type: none"> • Provide a High Town central area car park. • Establish an inner relief road (aspirational).
Develop and improve the cycle and pedestrian network	PRIORITY	Shropshire Council Community Action Team, Schools Bridgnorth Town Council	2011-2026	c£500,000 Funding Secured: £0	LTP funding	Neighbourhood Fund, CIL (Local)	Projects to be identified in LTP as proactive programme of improvement to footways, ramps, crossings and signals to include consideration of: <ul style="list-style-type: none"> • completion of route 45 riverside walking and cycling route. • identified need for maintenance of footpaths & roads in Bridgnorth Town Plan.
Footpath enhancement along the riverside	PRIORITY					Neighbourhood Fund, CIL (Local)	Identified community priority for footpath enhancement with current works to riverside.
Upgrading and enhancing the Hospital Walk including lighting	PRIORITY	Shropshire Council				Neighbourhood Fund, CIL (Local)	Identified community priority This area is currently managed and maintained by Shropshire Council who are the owners of the land.

Community Hubs – Development related infrastructure requirements

Infrastructure Requirement	Level of Priority	Delivery Partner(s)	Timing of Delivery	Potential Cost / Funds Secured	Potential Funding		Notes
					Wider Sources	Developer Contributions	
DITTON PRIORS COMMUNITY HUB AND PARISH							
HOUSING AND COHESIVE, SUSTAINABLE COMMUNITIES							
ECONOMIC INVESTMENT AND OPPORTUNITY							
Facilitation of ICT/broadband technologies	KEY	Shropshire Council, Private sector delivery partner, Town and Parish Councils		Initially £16.4 million. £8.2million secured from BDUK. £8.2 million secured from Shropshire Council.		CIL (Local)	Facilitation of ICT/broadband technologies is a community priority for many towns, villages and rural areas of Shropshire including Ditton Priors Parish Council. Connecting Shropshire aims to provide a minimum of 2 Mbps to all Shropshire communities and as much superfast broadband as possible. The project will deliver to communities not proposed to get either basic broadband or superfast broadband under the private sector rollout and so assists commercial providers.
SOCIAL AND COMMUNITY INFRASTRUCTURE							
Review of primary school places to ensure sufficient provision	PRIORITY	Shropshire Council	N/A	N/A	N/A	N/A	An updated assessment of the effect on primary school places locally has been made based on proposed levels of development with delivery spread evenly over the remaining Plan period. This currently indicates that capacity will exist in the village to meet the demand.
Review of secondary school places to ensure sufficient provision	PRIORTIY	Shropshire Council	N/A	N/A	N/A	N/A	An updated assessment of the effect on secondary school places locally has been made based on proposed levels of development with delivery spread evenly over the remaining Plan period. This currently indicates that capacity will exist in the area to meet the demand. Any requirements will be fully determined following SAMDev adoption
Provision for children and young people	KEY	Ditton Priors Parish Council, Shropshire				Neighbourhood Fund, CIL (Local)	The Parish Council has identified the need for a holiday scheme, secondary school club and possible youth club.

Infrastructure Requirement	Level of Priority	Delivery Partner(s)	Timing of Delivery	Potential Cost / Funds Secured	Potential Funding		Notes
					Wider Sources	Developer Contributions	
		Council, Village Hall Committee, Ditton Priors Playfield Association					
On-site open space provision and maintenance to meet site design requirements and standards.	PRIORITY	Developers, Shropshire Council	Dependent on development	N/A		On-site design, Section 106	On-site design standards are identified within the Open Space Interim Planning Guidance (IPG) (Jan 2012) and the Natural Environment Supplementary Planning Document (SPD) (to be completed).
Provision and maintenance of facilities and equipment for sport, recreation and leisure. This includes but is not limited to: <ul style="list-style-type: none"> • Outdoor sports facilities. • Recreational facilities for children. • Allotments. 	PRIORITY	Shropshire Council, Town and Parish Councils	Dependent on development	N/A	Sport England, Fields in Trust	Neighbourhood Fund, CIL (Local)	Provision to meet assessed need.
ENVIRONMENT AND CLIMATE CHANGE							
Assessment of local flood risk	PRIORITY	Shropshire Council, Environment Agency, Severn Trent Water	Ongoing	£10,000	Flood Defence Grant in Aid	CIL (Local)	The Local Flood Risk Management Strategy has identified that a number of properties in Ditton Priors may be at risk of flooding.

Infrastructure Requirement	Level of Priority	Delivery Partner(s)	Timing of Delivery	Potential Cost / Funds Secured	Potential Funding		Notes
					Wider Sources	Developer Contributions	
Production of Operational Flood Response Plan	PRIORITY	Shropshire Council, Environment Agency, Severn Trent Water	Ongoing	£5,000		Section 106	In accordance with the Local Flood Risk Management Strategy the operational flood response plans, produced from condition surveys of the land drainage systems, will flag who is responsible for the maintenance of the systems which serve communities. The aim is to promote community awareness of these drainage systems such that communities can be more resilient.
TRANSPORT AND ACCESSIBILITY							
Junction capacity, sustainability and safety improvements, where necessary, to facilitate specific development sites	CRITICAL	Shropshire Council				Section 106	To be determined as part of particular development proposals, as part of the planning application process
Local highway improvements, including speed and safety, public realm enhancements and sustainable travel	PRIORITY	Ditton Priors Parish Council, Shropshire Council, Landowners, British Horse Society				CIL (Local)	The Parish Council has identified the need for the following: <ul style="list-style-type: none"> • An access road from the Cleobury North side of the village to the industrial estate. • Improvements to Derrington Road between the village and Monkhopton. • More passing places on roads. • Upgrading of certain footpaths and bridleways.
Provision of pavement on Station Road	PRIORITY	Shropshire Council				Neighbourhood Fund, CIL (Local)	Identified community priority. Pavement to extend from the tree stump to the BT exchange building.

Community Clusters – Development related infrastructure requirements

Infrastructure Requirement	Level of Priority	Delivery Partner(s)	Timing of Delivery	Potential Cost / Funds Secured	Potential Funding		Notes
					Wider Sources	Developer Contributions	
NEENTON COMMUNITY CLUSTER AND ASSOCIATED PARISH							
HOUSING AND COHESIVE, SUSTAINABLE COMMUNITIES							
ECONOMIC INVESTMENT AND OPPORTUNITY							
Facilitation of ICT/broadband technologies	KEY	Shropshire Council, Private sector delivery partner, Town and Parish Councils		Initially £16.4 million. £8.2million secured from BDUK. £8.2 million secured from Shropshire Council.		CIL (Local)	Facilitation of ICT/broadband technologies is a community priority for many towns, villages and rural areas of Shropshire. Connecting Shropshire aims to provide a minimum of 2 Mbps to all Shropshire communities and as much superfast broadband as possible. The project will deliver to communities not proposed to get either basic broadband or superfast broadband under the private sector rollout and so assists commercial providers.
SOCIAL AND COMMUNITY INFRASTRUCTURE							
Renovation of the Pheasant Inn as a community facility	PRIORITY	Neenton Parish Meeting, Shropshire Council			Development of market dwellings on adjacent land, Rural Challenge Capital Fund	Section 106	Neenton Parish Council has identified the need to renovate the Pheasant Inn, to include a community room and for infrastructure works to support the scheme to be undertaken i.e. drainage works and road access. Development of market dwellings on adjacent land benefitted from Exceptional Circumstances Relief from CIL as all profits from the development are to contribute to the renovation of the Pheasant Inn.
On-site open space provision and maintenance to meet site design requirements and standards.	PRIORITY	Developers, Shropshire Council	Dependent on development	N/A		On-site design, Section 106	On-site design standards are identified within the Open Space Interim Planning Guidance (IPG) (Jan 2012) and the Natural Environment Supplementary Planning Document (SPD) (to be completed).
Provision and maintenance of facilities and equipment for sport, recreation and leisure.	PRIORITY	Shropshire Council, Town and Parish	Dependent on development	N/A	Sport England, Fields in Trust	Neighbourhood Fund, CIL (Local)	Provision to meet assessed need.

Infrastructure Requirement	Level of Priority	Delivery Partner(s)	Timing of Delivery	Potential Cost / Funds Secured	Potential Funding		Notes
					Wider Sources	Developer Contributions	
This includes but is not limited to: <ul style="list-style-type: none"> Outdoor sports facilities. Recreational facilities for children. Allotments. 		Councils					
Review of primary school places to ensure sufficient provision	PRIORITY	Shropshire Council	N/A	N/A	N/A	N/A	An updated assessment of the effect on primary school places locally has been made based on proposed levels of development with delivery spread evenly over the remaining Plan period. This currently indicates that capacity will exist in the village to meet the demand.
Review of secondary school places to ensure sufficient provision	PRIORITY	Shropshire Council	N/A	N/A	N/A	N/A	An updated assessment of the effect on secondary school places locally has been made based on proposed levels of development with delivery spread evenly over the remaining Plan period. This currently indicates that capacity will exist in the area to meet the demand.

ENVIRONMENT AND CLIMATE CHANGE

--	--	--	--	--	--	--	--

TRANSPORT AND ACCESSIBILITY

--	--	--	--	--	--	--	--

Infrastructure Requirement	Level of Priority	Delivery Partner(s)	Timing of Delivery	Potential Cost / Funds Secured	Potential Funding		Notes
					Wider Sources	Developer Contributions	

ACTON ROUND, ASTON EYRE, MONKHOPTON, MORVILLE AND UPTON CRESSETT COMMUNITY CLUSTER AND ASSOCIATED PARISHES

HOUSING AND COHESIVE, SUSTAINABLE COMMUNITIES

--	--	--	--	--	--	--	--

ECONOMIC INVESTMENT AND OPPORTUNITY

Facilitation of ICT/broadband	KEY	Shropshire Council,		Initially £16.4 million.		CIL (Local)	Facilitation of ICT/broadband technologies is a community priority for many towns, villages
-------------------------------	-----	---------------------	--	--------------------------	--	-------------	---

Infrastructure Requirement	Level of Priority	Delivery Partner(s)	Timing of Delivery	Potential Cost / Funds Secured	Potential Funding		Notes
					Wider Sources	Developer Contributions	
technologies		Private sector delivery partner, Town and Parish Councils		£8.2million secured from BDUK. £8.2 million secured from Shropshire Council.			and rural areas of Shropshire. Connecting Shropshire aims to provide a minimum of 2 Mbps to all Shropshire communities and as much superfast broadband as possible. The project will deliver to communities not proposed to get either basic broadband or superfast broadband under the private sector rollout and so assists commercial providers.
SOCIAL AND COMMUNITY INFRASTRUCTURE							
Review of primary school places to ensure sufficient provision	PRIORITY	Shropshire Council	N/A	N/A	N/A	N/A	An updated assessment of the effect on primary school places locally has been made based on proposed levels of development with delivery spread evenly over the remaining Plan period. This currently indicates that capacity will exist in the village to meet the demand.
Review of secondary school places to ensure sufficient provision	PRIORITY	Shropshire Council	N/A	N/A	N/A	N/A	An updated assessment of the effect on secondary school places locally has been made based on proposed levels of development with delivery spread evenly over the remaining Plan period. This currently indicates that capacity will exist in the area to meet the demand.
On-site open space provision and maintenance to meet site design requirements and standards.	PRIORITY	Developers, Shropshire Council	Dependent on development	N/A		On-site design, Section 106	On-site design standards are identified within the Open Space Interim Planning Guidance (IPG) (Jan 2012) and the Natural Environment Supplementary Planning Document (SPD) (to be completed).
Provision and maintenance of facilities and equipment for sport, recreation and leisure. This includes but is not limited to: <ul style="list-style-type: none"> Outdoor sports facilities. Recreational facilities for children. Allotments. 	PRIORITY	Shropshire Council, Town and Parish Councils	Dependent on development	N/A	Sport England, Fields in Trust	Neighbourhood Fund, CIL (Local)	Provision to meet assessed need.

Infrastructure Requirement	Level of Priority	Delivery Partner(s)	Timing of Delivery	Potential Cost / Funds Secured	Potential Funding		Notes
					Wider Sources	Developer Contributions	
ENVIRONMENT AND CLIMATE CHANGE							
TRANSPORT AND ACCESSIBILITY							
Local highway improvements, including speed and safety, public realm enhancements and sustainable travel	PRIORITY	Shropshire Council				Section 106	Priority at Morville Quarry.

Rural Hinterland – Development related infrastructure requirements

Infrastructure Requirement	Level of Priority	Delivery Partner(s)	Timing of Delivery	Potential Cost / Funds Secured	Potential Funding		Notes
					Wider Sources	Developer Contributions	
ALVELEY AND ROMSLEY							
HOUSING AND COHESIVE, SUSTAINABLE COMMUNITIES							
Affordable housing provision	PRIORITY	Shropshire Council, Homes and Communities Agency, Registered Providers	Ongoing			Section 106	The Parish Council has identified a need for: <ul style="list-style-type: none"> • Smaller bungalows, • 3 bedroom family homes • 2 bedroom initial/starter homes to be rented/shared ownership/for sale. • Warden aided accommodation for the elderly.
ECONOMIC INVESTMENT AND OPPORTUNITY							
Facilitation of ICT/broadband technologies	KEY	Shropshire Council, Private sector delivery partner, Alveley & Romsley Parish Council		Initially £16.4 million. £8.2million secured from BDUK. £8.2 million secured from Shropshire Council.		CIL (Local)	Facilitation of ICT/broadband technologies is a community priority for many towns, villages and rural areas of Shropshire. Connecting Shropshire aims to provide a minimum of 2 Mbps to all Shropshire communities and as much superfast broadband as possible. The project will deliver to communities not proposed to get either basic broadband or superfast broadband under the private sector rollout and so assists commercial providers.
Investment and improvement at Alveley Industrial Estate	KEY	Private Sector, Shropshire Council, Utility Companies					New investment is required in the existing Alveley Industrial Estate to improve the commercial offer through the adoption of estate roads, lighting and services and by upgrading existing leasehold workshops and through the redevelopment of vacant / underused buildings / plots within the estate.
Development of Alveley Old Chapel	PRIORITY	St Mary's Church, Shropshire Council, Age UK, CAB, Telford College of	2013/14	Cost: £50,000	Parish Council, Hereford Diocesan Partnership Fund,	Neighbourhood Fund, CIL (Local)	The Chapel already accommodates a young people's centre and has become a consolidated hub for youth programmes and activities. The Church organisation also intends to use the Chapel as a commercial and business support centre for the Alveley area. The increased usage requires a

Infrastructure Requirement	Level of Priority	Delivery Partner(s)	Timing of Delivery	Potential Cost / Funds Secured	Potential Funding		Notes
					Wider Sources	Developer Contributions	
		Art & Tech., Private sector, Alveley and Romsley Parish Council			LJC, Local Trust Funds, Methodist Church		building extension to the Chapel to accommodate these identified needs.
SOCIAL AND COMMUNITY INFRASTRUCTURE							
Improved facilities for children and young people	KEY	Alveley and Romsley Parish Council, St. Mary's Church, Shropshire Council, Volunteers, Scout and Guide movements, Bridgnorth Youth & Schools Project	2015			Neighbourhood Fund, CIL (Local)	Requirement for BMX look to identify site at Country Park or alternative site. Uniformed organisations to re-start groups
On-site open space provision and maintenance to meet site design requirements and standards.	PRIORITY	Developers, Shropshire Council	Dependent on development	N/A		On-site design, Section 106	On-site design standards are identified within the Open Space Interim Planning Guidance (IPG) (Jan 2012) and the Natural Environment Supplementary Planning Document (SPD) (to be completed).

Infrastructure Requirement	Level of Priority	Delivery Partner(s)	Timing of Delivery	Potential Cost / Funds Secured	Potential Funding		Notes
					Wider Sources	Developer Contributions	
Provision and maintenance of facilities and equipment for sport, recreation and leisure. This includes but is not limited to: <ul style="list-style-type: none"> • Outdoor sports facilities. • Recreational facilities for children. • Allotments. 	PRIORITY	Shropshire Council, Town and Parish Councils	Dependent on development	N/A	Sport England, Fields in Trust	Neighbourhood Fund, CIL (Local)	Provision to meet assessed need.
ENVIRONMENT AND CLIMATE CHANGE							
TRANSPORT AND ACCESSIBILITY							
Local highway improvements, including speed and safety, public realm enhancements and sustainable travel	KEY	Shropshire Council, Alveley and Romsley Parish Council				Neighbourhood Fund, CIL (Local)	The Parish Council have identified the need to: <ul style="list-style-type: none"> • Investigate and install measures to reduce speed of traffic through village.
Develop and improve the cycle and pedestrian network	KEY	Shropshire Council				Neighbourhood Fund, CIL (Local)	The Parish Council has identified the need for Cycle lanes rather than the combined path for cyclists and walkers in the Country Park
Improvements to the street scene	KEY	Alveley and Romsley Parish Council, Shropshire Council, Shop Owners, Recreation Association	Ongoing	Funding secured: £500 for planters at village entrances and in front of shops and Parish Council has also provided	Parish Council Shropshire Council	Neighbourhood fund	The Parish Council has identified the need for <ul style="list-style-type: none"> • No fly tipping signs. • A smokeless zone. • Reintroduce hanging baskets • Annual village tidy up, • Re-painting of road name plates Further provision includes: <ul style="list-style-type: none"> • Planters at village entrances and in front of shops • Improvements at key targeted location such as bus stops, by recreation ground , open spaces

Infrastructure Requirement	Level of Priority	Delivery Partner(s)	Timing of Delivery	Potential Cost / Funds Secured	Potential Funding		Notes
					Wider Sources	Developer Contributions	
ASTLEY ABBOTTS							
HOUSING AND COHESIVE, SUSTAINABLE COMMUNITIES							
ECONOMIC INVESTMENT AND OPPORTUNITY							
Facilitation of ICT/broadband technologies	KEY	Shropshire Council, Private sector delivery partner, Town and Parish Councils		Initially £16.4 million. £8.2million secured from BDUK. £8.2 million secured from Shropshire Council.		CIL (Local)	Facilitation of ICT/broadband technologies is a community priority for many towns, villages and rural areas of Shropshire. Connecting Shropshire aims to provide a minimum of 2 Mbps to all Shropshire communities and as much superfast broadband as possible. The project will deliver to communities not proposed to get either basic broadband or superfast broadband under the private sector rollout and so assists commercial providers.
SOCIAL AND COMMUNITY INFRASTRUCTURE							
On-site open space provision and maintenance to meet site design requirements and standards.	PRIORITY	Developers, Shropshire Council	Dependent on development	N/A		On-site design, Section 106	On-site design standards are identified within the Open Space Interim Planning Guidance (IPG) (Jan 2012) and the Natural Environment Supplementary Planning Document (SPD) (to be completed).
Provision and maintenance of facilities and equipment for sport, recreation and leisure. This includes but is not limited to: <ul style="list-style-type: none"> Outdoor sports facilities. Recreational facilities for children. Allotments. 	PRIORITY	Shropshire Council, Town and Parish Councils	Dependent on development	N/A	Sport England, Fields in Trust	Neighbourhood Fund, CIL (Local)	Provision to meet assessed need.
ENVIRONMENT AND CLIMATE CHANGE							
TRANSPORT AND ACCESSIBILITY							
Provision of a pavement from Bridgnorth to	PRIORITY	Astley Abbotts		Approx £40k		Neighbourhood Fund,	The Parish Council have identified need for a footpath from Bridgnorth to Crosslane Head.

Infrastructure Requirement	Level of Priority	Delivery Partner(s)	Timing of Delivery	Potential Cost / Funds Secured	Potential Funding		Notes
					Wider Sources	Developer Contributions	
Crosslane Head		Parish Council, Shropshire Council				CIL (Local)	Approximate costs of the project have been identified. The pavement would start where the existing pavement finishes at Cantreyn and run along the highway to Cross Lane Head joining the pavement there.

Infrastructure Requirement	Level of Priority	Delivery Partner(s)	Timing of Delivery	Potential Cost / Funds Secured	Potential Funding		Notes
					Wider Sources	Developer Contributions	

ASTON BOTTERELL

HOUSING AND COHESIVE, SUSTAINABLE COMMUNITIES

--	--	--	--	--	--	--	--

ECONOMIC INVESTMENT AND OPPORTUNITY

Facilitation of ICT/broadband technologies	KEY	Shropshire Council, Private sector delivery partner, Town and Parish Councils		Initially £16.4 million. £8.2million secured from BDUK. £8.2 million secured from Shropshire Council.		CIL (Local)	Facilitation of ICT/broadband technologies is a community priority for many towns, villages and rural areas of Shropshire. Connecting Shropshire aims to provide a minimum of 2 Mbps to all Shropshire communities and as much superfast broadband as possible. The project will deliver to communities not proposed to get either basic broadband or superfast broadband under the private sector rollout and so assists commercial providers.
--	-----	---	--	---	--	-------------	---

SOCIAL AND COMMUNITY INFRASTRUCTURE

On-site open space provision and maintenance to meet site design requirements and standards.	PRIORITY	Developers, Shropshire Council	Dependent on development	N/A		On-site design, Section 106	On-site design standards are identified within the Open Space Interim Planning Guidance (IPG) (Jan 2012) and the Natural Environment Supplementary Planning Document (SPD) (to be completed).
Provision and maintenance of facilities and equipment for sport, recreation and leisure. This includes but is not limited to: <ul style="list-style-type: none"> Outdoor sports facilities. Recreational facilities 	PRIORITY	Shropshire Council, Town and Parish Councils	Dependent on development	N/A	Sport England, Fields in Trust	Neighbourhood Fund, CIL (Local)	Provision to meet assessed need.

Infrastructure Requirement	Level of Priority	Delivery Partner(s)	Timing of Delivery	Potential Cost / Funds Secured	Potential Funding		Notes
					Wider Sources	Developer Contributions	
for children. • Allotments.							
ENVIRONMENT AND CLIMATE CHANGE							
TRANSPORT AND ACCESSIBILITY							

Infrastructure Requirement	Level of Priority	Delivery Partner(s)	Timing of Delivery	Potential Cost / Funds Secured	Potential Funding		Notes
					Wider Sources	Developer Contributions	
BILLINGSLEY							
HOUSING AND COHESIVE, SUSTAINABLE COMMUNITIES							
ECONOMIC INVESTMENT AND OPPORTUNITY							
Facilitation of ICT/broadband technologies	KEY	Shropshire Council, Private sector delivery partner, Town and Parish Councils		Initially £16.4 million. £8.2million secured from BDUK. £8.2 million secured from Shropshire Council.		CIL (Local)	Facilitation of ICT/broadband technologies is a community priority for many towns, villages and rural areas of Shropshire. Connecting Shropshire aims to provide a minimum of 2 Mbps to all Shropshire communities and as much superfast broadband as possible. The project will deliver to communities not proposed to get either basic broadband or superfast broadband under the private sector rollout and so assists commercial providers.
SOCIAL AND COMMUNITY INFRASTRUCTURE							
On-site open space provision and maintenance to meet site design requirements and standards.	PRIORITY	Developers, Shropshire Council	Dependent on development	N/A		On-site design, Section 106	On-site design standards are identified within the Open Space Interim Planning Guidance (IPG) (Jan 2012) and the Natural Environment Supplementary Planning Document (SPD) (to be completed).
Provision and maintenance of facilities and equipment for sport, recreation and leisure. This includes but is not limited to: • Outdoor sports	PRIORITY	Shropshire Council, Town and Parish Councils	Dependent on development	N/A	Sport England, Fields in Trust	Neighbourhood Fund, CIL (Local)	Provision to meet assessed need.

Infrastructure Requirement	Level of Priority	Delivery Partner(s)	Timing of Delivery	Potential Cost / Funds Secured	Potential Funding		Notes
					Wider Sources	Developer Contributions	
facilities. • Recreational facilities for children. • Allotments.							
ENVIRONMENT AND CLIMATE CHANGE							
TRANSPORT AND ACCESSIBILITY							

Infrastructure Requirement	Level of Priority	Delivery Partner(s)	Timing of Delivery	Potential Cost / Funds Secured	Potential Funding		Notes
					Wider Sources	Developer Contributions	
BURWARTON							
HOUSING AND COHESIVE, SUSTAINABLE COMMUNITIES							
ECONOMIC INVESTMENT AND OPPORTUNITY							
Facilitation of ICT/broadband technologies	KEY	Shropshire Council, Private sector delivery partner, Town and Parish Councils		Initially £16.4 million. £8.2million secured from BDUK. £8.2 million secured from Shropshire Council.		CIL (Local)	Facilitation of ICT/broadband technologies is a community priority for many towns, villages and rural areas of Shropshire. Connecting Shropshire aims to provide a minimum of 2 Mbps to all Shropshire communities and as much superfast broadband as possible. The project will deliver to communities not proposed to get either basic broadband or superfast broadband under the private sector rollout and so assists commercial providers.
SOCIAL AND COMMUNITY INFRASTRUCTURE							
On-site open space provision and maintenance to meet site design requirements and standards.	PRIORITY	Developers, Shropshire Council	Dependent on development	N/A		On-site design, Section 106	On-site design standards are identified within the Open Space Interim Planning Guidance (IPG) (Jan 2012) and the Natural Environment Supplementary Planning Document (SPD) (to be completed).
Provision and maintenance of facilities and equipment for sport, recreation and leisure. This includes but is not	PRIORITY	Shropshire Council, Town and Parish	Dependent on development	N/A	Sport England, Fields in Trust	Neighbourhood Fund, CIL (Local)	Provision to meet assessed need. The Parish Council has expressed a desire to have a tennis court next to the cricket pitch.

Infrastructure Requirement	Level of Priority	Delivery Partner(s)	Timing of Delivery	Potential Cost / Funds Secured	Potential Funding		Notes
					Wider Sources	Developer Contributions	
limited to: <ul style="list-style-type: none"> Outdoor sports facilities. Recreational facilities for children. Allotments. 		Councils					
ENVIRONMENT AND CLIMATE CHANGE							
TRANSPORT AND ACCESSIBILITY							

Infrastructure Requirement	Level of Priority	Delivery Partner(s)	Timing of Delivery	Potential Cost / Funds Secured	Potential Funding		Notes
					Wider Sources	Developer Contributions	
CHETTON							
HOUSING AND COHESIVE, SUSTAINABLE COMMUNITIES							
ECONOMIC INVESTMENT AND OPPORTUNITY							
Facilitation of ICT/broadband technologies	KEY	Shropshire Council, Private sector delivery partner, Town and Parish Councils		Initially £16.4 million. £8.2million secured from BDUK. £8.2 million secured from Shropshire Council.		CIL (Local)	Facilitation of ICT/broadband technologies is a community priority for many towns, villages and rural areas of Shropshire. Connecting Shropshire aims to provide a minimum of 2 Mbps to all Shropshire communities and as much superfast broadband as possible. The project will deliver to communities not proposed to get either basic broadband or superfast broadband under the private sector rollout and so assists commercial providers.
SOCIAL AND COMMUNITY INFRASTRUCTURE							
On-site open space provision and maintenance to meet site design requirements and standards.	PRIORITY	Developers, Shropshire Council	Dependent on development	N/A		On-site design, Section 106	On-site design standards are identified within the Open Space Interim Planning Guidance (IPG) (Jan 2012) and the Natural Environment Supplementary Planning Document (SPD) (to be completed).
Provision and maintenance of facilities and equipment for sport,	PRIORITY	Shropshire Council,	Dependent on development	N/A	Sport England, Fields in Trust	Neighbourhood Fund,	Provision to meet assessed need.

Infrastructure Requirement	Level of Priority	Delivery Partner(s)	Timing of Delivery	Potential Cost / Funds Secured	Potential Funding		Notes
					Wider Sources	Developer Contributions	
recreation and leisure. This includes but is not limited to: <ul style="list-style-type: none"> Outdoor sports facilities. Recreational facilities for children. Allotments. 		Town and Parish Councils				CIL (Local)	
ENVIRONMENT AND CLIMATE CHANGE							
TRANSPORT AND ACCESSIBILITY							

Infrastructure Requirement	Level of Priority	Delivery Partner(s)	Timing of Delivery	Potential Cost / Funds Secured	Potential Funding		Notes
					Wider Sources	Developer Contributions	
CLAVERLEY							
HOUSING AND COHESIVE, SUSTAINABLE COMMUNITIES							
ECONOMIC INVESTMENT AND OPPORTUNITY							
Facilitation of ICT/broadband technologies	KEY	Shropshire Council, Private sector delivery partner, Town and Parish Councils		Initially £16.4 million. £8.2million secured from BDUK. £8.2 million secured from Shropshire Council.		CIL (Local)	Facilitation of ICT/broadband technologies is a community priority for many towns, villages and rural areas of Shropshire. Connecting Shropshire aims to provide a minimum of 2 Mbps to all Shropshire communities and as much superfast broadband as possible. The project will deliver to communities not proposed to get either basic broadband or superfast broadband under the private sector rollout and so assists commercial providers.
SOCIAL AND COMMUNITY INFRASTRUCTURE							
On-site open space provision and maintenance to meet site design requirements and standards.	PRIORITY	Developers, Shropshire Council	Dependent on development	N/A		On-site design, Section 106	On-site design standards are identified within the Open Space Interim Planning Guidance (IPG) (Jan 2012) and the Natural Environment Supplementary Planning Document (SPD) (to be completed).

Infrastructure Requirement	Level of Priority	Delivery Partner(s)	Timing of Delivery	Potential Cost / Funds Secured	Potential Funding		Notes
					Wider Sources	Developer Contributions	
Provision and maintenance of facilities and equipment for sport, recreation and leisure. This includes but is not limited to: <ul style="list-style-type: none"> • Outdoor sports facilities. • Recreational facilities for children. • Allotments. 	PRIORITY	Shropshire Council, Town and Parish Councils	Dependent on development	N/A	Sport England, Fields in Trust	Neighbourhood Fund, CIL (Local)	Provision to meet assessed need.

ENVIRONMENT AND CLIMATE CHANGE

--	--	--	--	--	--	--	--

TRANSPORT AND ACCESSIBILITY

Local highway improvements, including speed and safety, public realm enhancements and sustainable travel	KEY	Shropshire Council, Claverley Parish Council				Neighbourhood Fund, CIL (Local)	The Parish Council has identified the need to: <ul style="list-style-type: none"> • Establish an annual maintenance plan with Shropshire Council. • Seek a solution to the current parking problem. There is a need to develop a central carpark to address multiple parking in Claverley Village e.g. access for emergency vehicles, and utility services vehicles, for the village functions, Claverley Church, village hall, tennis club, post office and most importantly Claverley Surgery • Provide destination way markers. • Provide seating, kissing gates and dog wickets. • Investigate ability to improve disabled access. • Provide a low cost map.
--	-----	--	--	--	--	---------------------------------	--

Infrastructure Requirement	Level of Priority	Delivery Partner(s)	Timing of Delivery	Potential Cost / Funds Secured	Potential Funding		Notes
					Wider Sources	Developer Contributions	

CLEOBURY NORTH

HOUSING AND COHESIVE, SUSTAINABLE COMMUNITIES

Infrastructure Requirement	Level of Priority	Delivery Partner(s)	Timing of Delivery	Potential Cost / Funds Secured	Potential Funding		Notes
					Wider Sources	Developer Contributions	
ECONOMIC INVESTMENT AND OPPORTUNITY							
Facilitation of ICT/broadband technologies	KEY	Shropshire Council, Private sector delivery partner, Town and Parish Councils		Initially £16.4 million. £8.2million secured from BDUK. £8.2 million secured from Shropshire Council.		CIL (Local)	Facilitation of ICT/broadband technologies is a community priority for many towns, villages and rural areas of Shropshire. Connecting Shropshire aims to provide a minimum of 2 Mbps to all Shropshire communities and as much superfast broadband as possible. The project will deliver to communities not proposed to get either basic broadband or superfast broadband under the private sector rollout and so assists commercial providers.
SOCIAL AND COMMUNITY INFRASTRUCTURE							
On-site open space provision and maintenance to meet site design requirements and standards.	PRIORITY	Developers, Shropshire Council	Dependent on development	N/A		On-site design, Section 106	On-site design standards are identified within the Open Space Interim Planning Guidance (IPG) (Jan 2012) and the Natural Environment Supplementary Planning Document (SPD) (to be completed).
Provision and maintenance of facilities and equipment for sport, recreation and leisure. This includes but is not limited to: <ul style="list-style-type: none"> Outdoor sports facilities. Recreational facilities for children. Allotments. 	PRIORITY	Shropshire Council, Town and Parish Councils	Dependent on development	N/A	Sport England, Fields in Trust	Neighbourhood Fund, CIL (Local)	Provision to meet assessed need.
ENVIRONMENT AND CLIMATE CHANGE							
TRANSPORT AND ACCESSIBILITY							
Infrastructure Requirement	Level of Priority	Delivery Partner(s)	Timing of Delivery	Potential Cost / Funds Secured	Potential Funding		Notes
					Wider Sources	Developer Contributions	

Infrastructure Requirement	Level of Priority	Delivery Partner(s)	Timing of Delivery	Potential Cost / Funds Secured	Potential Funding		Notes
					Wider Sources	Developer Contributions	
DEUXHILL							
HOUSING AND COHESIVE, SUSTAINABLE COMMUNITIES							
ECONOMIC INVESTMENT AND OPPORTUNITY							
Facilitation of ICT/broadband technologies	KEY	Shropshire Council, Private sector delivery partner, Town and Parish Councils		Initially £16.4 million. £8.2million secured from BDUK. £8.2 million secured from Shropshire Council.		CIL (Local)	Facilitation of ICT/broadband technologies is a community priority for many towns, villages and rural areas of Shropshire. Connecting Shropshire aims to provide a minimum of 2 Mbps to all Shropshire communities and as much superfast broadband as possible. The project will deliver to communities not proposed to get either basic broadband or superfast broadband under the private sector rollout and so assists commercial providers.
SOCIAL AND COMMUNITY INFRASTRUCTURE							
On-site open space provision and maintenance to meet site design requirements and standards.	PRIORITY	Developers, Shropshire Council	Dependent on development	N/A		On-site design, Section 106	On-site design standards are identified within the Open Space Interim Planning Guidance (IPG) (Jan 2012) and the Natural Environment Supplementary Planning Document (SPD) (to be completed).
Provision and maintenance of facilities and equipment for sport, recreation and leisure. This includes but is not limited to: <ul style="list-style-type: none"> Outdoor sports facilities. Recreational facilities for children. Allotments. 	PRIORITY	Shropshire Council, Town and Parish Councils	Dependent on development	N/A	Sport England, Fields in Trust	Neighbourhood Fund, CIL (Local)	Provision to meet assessed need.
ENVIRONMENT AND CLIMATE CHANGE							
TRANSPORT AND ACCESSIBILITY							

Infrastructure	Level of	Delivery	Timing of	Potential	Potential Funding	Notes
----------------	----------	----------	-----------	-----------	-------------------	-------

Requirement	Priority	Partner(s)	Delivery	Cost / Funds Secured	Wider Sources	Developer Contributions	
EARDINGTON							
HOUSING AND COHESIVE, SUSTAINABLE COMMUNITIES							
ECONOMIC INVESTMENT AND OPPORTUNITY							
Facilitation of ICT/broadband technologies	KEY	Shropshire Council, Private sector delivery partner, Town and Parish Councils		Initially £16.4 million. £8.2million secured from BDUK. £8.2 million secured from Shropshire Council.		CIL (Local)	Facilitation of ICT/broadband technologies is a community priority for many towns, villages and rural areas of Shropshire. Connecting Shropshire aims to provide a minimum of 2 Mbps to all Shropshire communities and as much superfast broadband as possible. The project will deliver to communities not proposed to get either basic broadband or superfast broadband under the private sector rollout and so assists commercial providers.
SOCIAL AND COMMUNITY INFRASTRUCTURE							
Use of Lafarge Quarry as a community asset	KEY	Eardington Parish Council				Neighbourhood Fund	Identified community priority.
On-site open space provision and maintenance to meet site design requirements and standards.	PRIORITY	Developers, Shropshire Council	Dependent on development	N/A		On-site design, Section 106	On-site design standards are identified within the Open Space Interim Planning Guidance (IPG) (Jan 2012) and the Natural Environment Supplementary Planning Document (SPD) (to be completed).
Provision and maintenance of facilities and equipment for sport, recreation and leisure. This includes but is not limited to: <ul style="list-style-type: none"> Outdoor sports facilities. Recreational facilities for children. Allotments. 	PRIORITY	Shropshire Council, Town and Parish Councils	Dependent on development	N/A	Sport England, Fields in Trust	Neighbourhood Fund, CIL (Local)	Provision to meet assessed need.
ENVIRONMENT AND CLIMATE CHANGE							
TRANSPORT AND ACCESSIBILITY							

Infrastructure Requirement	Level of Priority	Delivery Partner(s)	Timing of Delivery	Potential Cost / Funds Secured	Potential Funding		Notes
					Wider Sources	Developer Contributions	
GLAZELEY							
HOUSING AND COHESIVE, SUSTAINABLE COMMUNITIES							
ECONOMIC INVESTMENT AND OPPORTUNITY							
Facilitation of ICT/broadband technologies	KEY	Shropshire Council, Private sector delivery partner, Town and Parish Councils		Initially £16.4 million. £8.2million secured from BDUK. £8.2 million secured from Shropshire Council.		CIL (Local)	Facilitation of ICT/broadband technologies is a community priority for many towns, villages and rural areas of Shropshire. Connecting Shropshire aims to provide a minimum of 2 Mbps to all Shropshire communities and as much superfast broadband as possible. The project will deliver to communities not proposed to get either basic broadband or superfast broadband under the private sector rollout and so assists commercial providers.
SOCIAL AND COMMUNITY INFRASTRUCTURE							
On-site open space provision and maintenance to meet site design requirements and standards.	PRIORITY	Developers, Shropshire Council	Dependent on development	N/A		On-site design, Section 106	On-site design standards are identified within the Open Space Interim Planning Guidance (IPG) (Jan 2012) and the Natural Environment Supplementary Planning Document (SPD) (to be completed).
Provision and maintenance of facilities and equipment for sport, recreation and leisure. This includes but is not limited to: <ul style="list-style-type: none"> Outdoor sports facilities. Recreational facilities for children. Allotments. 	PRIORITY	Shropshire Council, Town and Parish Councils	Dependent on development	N/A	Sport England, Fields in Trust	Neighbourhood Fund, CIL (Local)	Provision to meet assessed need.
ENVIRONMENT AND CLIMATE CHANGE							
TRANSPORT AND ACCESSIBILITY							

Infrastructure Requirement	Level of Priority	Delivery Partner(s)	Timing of Delivery	Potential Cost / Funds Secured	Potential Funding		Notes
					Wider Sources	Developer Contributions	
MIDDLETON SCRIVEN							
HOUSING AND COHESIVE, SUSTAINABLE COMMUNITIES							
ECONOMIC INVESTMENT AND OPPORTUNITY							
Facilitation of ICT/broadband technologies	KEY	Shropshire Council, Private sector delivery partner, Town and Parish Councils		Initially £16.4 million. £8.2million secured from BDUK. £8.2 million secured from Shropshire Council.		CIL (Local)	Facilitation of ICT/broadband technologies is a community priority for many towns, villages and rural areas of Shropshire. Connecting Shropshire aims to provide a minimum of 2 Mbps to all Shropshire communities and as much superfast broadband as possible. The project will deliver to communities not proposed to get either basic broadband or superfast broadband under the private sector rollout and so assists commercial providers.
SOCIAL AND COMMUNITY INFRASTRUCTURE							
On-site open space provision and maintenance to meet site design requirements and standards.	PRIORITY	Developers, Shropshire Council	Dependent on development	N/A		On-site design, Section 106	On-site design standards are identified within the Open Space Interim Planning Guidance (IPG) (Jan 2012) and the Natural Environment Supplementary Planning Document (SPD) (to be completed).
Provision and maintenance of facilities and equipment for sport, recreation and leisure. This includes but is not limited to: <ul style="list-style-type: none"> Outdoor sports facilities. Recreational facilities for children. Allotments. 	PRIORITY	Shropshire Council, Town and Parish Councils	Dependent on development	N/A	Sport England, Fields in Trust	Neighbourhood Fund, CIL (Local)	Provision to meet assessed need.
ENVIRONMENT AND CLIMATE CHANGE							
TRANSPORT AND ACCESSIBILITY							

Infrastructure Requirement	Level of Priority	Delivery Partner(s)	Timing of Delivery	Potential Cost / Funds Secured	Potential Funding		Notes
					Wider Sources	Developer Contributions	
QUATT MALVERN							
HOUSING AND COHESIVE, SUSTAINABLE COMMUNITIES							
ECONOMIC INVESTMENT AND OPPORTUNITY							
Facilitation of ICT/broadband technologies	KEY	Shropshire Council, Private sector delivery partner, Town and Parish Councils		Initially £16.4 million. £8.2million secured from BDUK. £8.2 million secured from Shropshire Council.		CIL (Local)	Facilitation of ICT/broadband technologies is a community priority for many towns, villages and rural areas of Shropshire. Connecting Shropshire aims to provide a minimum of 2 Mbps to all Shropshire communities and as much superfast broadband as possible. The project will deliver to communities not proposed to get either basic broadband or superfast broadband under the private sector rollout and so assists commercial providers.
SOCIAL AND COMMUNITY INFRASTRUCTURE							
On-site open space provision and maintenance to meet site design requirements and standards.	PRIORITY	Developers, Shropshire Council	Dependent on development	N/A		On-site design, Section 106	On-site design standards are identified within the Open Space Interim Planning Guidance (IPG) (Jan 2012) and the Natural Environment Supplementary Planning Document (SPD) (to be completed).
Provision and maintenance of facilities and equipment for sport, recreation and leisure. This includes but is not limited to: <ul style="list-style-type: none"> Outdoor sports facilities. Recreational facilities for children. Allotments. 	PRIORITY	Shropshire Council, Town and Parish Councils	Dependent on development	N/A	Sport England, Fields in Trust	Neighbourhood Fund, CIL (Local)	Provision to meet assessed need.
ENVIRONMENT AND CLIMATE CHANGE							
TRANSPORT AND ACCESSIBILITY							

Infrastructure Requirement	Level of Priority	Delivery Partner(s)	Timing of Delivery	Potential Cost / Funds Secured	Potential Funding		Notes
					Wider Sources	Developer Contributions	
SUTTON MADDOCK							
HOUSING AND COHESIVE, SUSTAINABLE COMMUNITIES							
ECONOMIC INVESTMENT AND OPPORTUNITY							
Facilitation of ICT/broadband technologies	KEY	Shropshire Council, Private sector delivery partner, Town and Parish Councils		Initially £16.4 million. £8.2million secured from BDUK. £8.2 million secured from Shropshire Council.		CIL (Local)	Facilitation of ICT/broadband technologies is a community priority for many towns, villages and rural areas of Shropshire. Connecting Shropshire aims to provide a minimum of 2 Mbps to all Shropshire communities and as much superfast broadband as possible. The project will deliver to communities not proposed to get either basic broadband or superfast broadband under the private sector rollout and so assists commercial providers.
SOCIAL AND COMMUNITY INFRASTRUCTURE							
On-site open space provision and maintenance to meet site design requirements and standards.	PRIORITY	Developers, Shropshire Council	Dependent on development	N/A		On-site design, Section 106	On-site design standards are identified within the Open Space Interim Planning Guidance (IPG) (Jan 2012) and the Natural Environment Supplementary Planning Document (SPD) (to be completed).
Provision and maintenance of facilities and equipment for sport, recreation and leisure. This includes but is not limited to: <ul style="list-style-type: none"> Outdoor sports facilities. Recreational facilities for children. Allotments. 	PRIORITY	Shropshire Council, Town and Parish Councils	Dependent on development	N/A	Sport England, Fields in Trust	Neighbourhood Fund, CIL (Local)	Provision to meet assessed need.
ENVIRONMENT AND CLIMATE CHANGE							
TRANSPORT AND ACCESSIBILITY							

Infrastructure Requirement	Level of Priority	Delivery Partner(s)	Timing of Delivery	Potential Cost / Funds Secured	Potential Funding		Notes
					Wider Sources	Developer Contributions	
TASLEY							
HOUSING AND COHESIVE, SUSTAINABLE COMMUNITIES							
The Parish Council have stated that much of this part of the place plan will need Bridgnorth Town Council and Tasley Parish Council to work together to develop an inter-dependent community infrastructure and promote the aspirations of both councils. The aim is that the town and parish both flourish as separately identifiable communities which respect and enhance the well-being of each other by a close and cooperative working relationship.							
Affordable housing provision	PRIORITY	Shropshire Council, Homes and Communities Agency, Registered Providers	Ongoing	N/A	N/A	Section 106	Within Shropshire, it is the Council's aspiration that all developments contribute to a sustainable mix of dwelling types, sizes and tenures. This will be either through on-site provision or payment of a sum to be used for provision of affordable housing.
ECONOMIC INVESTMENT AND OPPORTUNITY							
Facilitation of ICT/broadband technologies	KEY	Shropshire Council, Private sector delivery partner, Town and Parish Councils		Initially £16.4 million. £8.2million secured from BDUK. £8.2 million secured from Shropshire Council.		CIL (Local)	Facilitation of ICT/broadband technologies is a community priority for many towns, villages and rural areas of Shropshire. Connecting Shropshire aims to provide a minimum of 2 Mbps to all Shropshire communities and as much superfast broadband as possible. The project will deliver to communities not proposed to get either basic broadband or superfast broadband under the private sector rollout and so assists commercial providers.
SOCIAL AND COMMUNITY INFRASTRUCTURE							
Tasley village community centre	PRIORITY	Tasley Parish Council, Shropshire Council			Developers	Neighbourhood Fund, CIL (Local)	Highest identified community priority. Current village hall has maximum capacity for 60 people. Tasley Parish Council has identified that the development of a multi use community facility as essential to supporting the proposed residential development. Use could include: <ul style="list-style-type: none"> • Adult education • Playgroup • Healthcare • Inter-denomination worship • Entertainment • Social events

Infrastructure Requirement	Level of Priority	Delivery Partner(s)	Timing of Delivery	Potential Cost / Funds Secured	Potential Funding		Notes
					Wider Sources	Developer Contributions	
On-site open space provision and maintenance to meet site design requirements and standards.	PRIORITY	Developers, Shropshire Council	Dependent on development	N/A		On-site design, Section 106	On-site design standards are identified within the Open Space Interim Planning Guidance (IPG) (Jan 2012) and the Natural Environment Supplementary Planning Document (SPD) (to be completed).
Provision and maintenance of facilities and equipment for sport, recreation and leisure. This includes but is not limited to: <ul style="list-style-type: none"> Outdoor sports facilities. Recreational facilities for children. Allotments. 	PRIORITY	Shropshire Council, Town and Parish Councils	Dependent on development	N/A	Sport England, Fields in Trust	Neighbourhood Fund, CIL (Local)	Provision to meet assessed need. The Parish Council has identified a need for additional play area provision to include sufficient room to play football (possibly a marked pitch and posts) with an area for quiet recreation.
ENVIRONMENT AND CLIMATE CHANGE							
Drainage on Wenlock Road near to Church Lane	PRIORITY	Shropshire Council				Neighbourhood Fund, CIL (Local)	The Parish Council has identified a need for improvements to drainage on Wenlock Road near to Church Lane. Further feasibility assessment will need to be carried out.
TRANSPORT AND ACCESSIBILITY							
Local highway improvements, including speed and safety, public realm enhancements and sustainable travel	PRIORITY	Shropshire Council				CIL (Local)	Identified community priority. To include: <ul style="list-style-type: none"> Improvements to junction at Church Lane onto Wenlock Road and for the widening of Church Lane Pedestrian crossing on Wenlock Road Replace Y junction on A458 at Tasley onto Wenlock Road with a roundabout Increase provision of local bus services, including consideration of re-routing existing 101 service.
Footpath improvements	PRIORITY	Tasley Parish Council, Shropshire Council				Neighbourhood Fund, CIL (Local)	Identified community priority. Parish Council has identified a need for the following local improvements: <ul style="list-style-type: none"> Paving of footpath to in amenity land from Fairfield to Clee View Road Tarmac route from Trevithick Close to Wenlock Road

Infrastructure Requirement	Level of Priority	Delivery Partner(s)	Timing of Delivery	Potential Cost / Funds Secured	Potential Funding		Notes
					Wider Sources	Developer Contributions	
							<ul style="list-style-type: none"> Provision of hard surface path from Portmans Way to Wenlock Rise New path from the community land to Tasley village hall

Infrastructure Requirement	Level of Priority	Delivery Partner(s)	Timing of Delivery	Potential Cost / Funds Secured	Potential Funding		Notes
					Wider Sources	Developer Contributions	

WORFIELD AND RUDGE

HOUSING AND COHESIVE, SUSTAINABLE COMMUNITIES

--	--	--	--	--	--	--	--

ECONOMIC INVESTMENT AND OPPORTUNITY

Facilitation of ICT/broadband technologies	KEY	Shropshire Council, Private sector delivery partner, Town and Parish Councils		Initially £16.4 million. £8.2million secured from BDUK. £8.2 million secured from Shropshire Council.		CIL (Local)	Facilitation of ICT/broadband technologies is a community priority for many towns, villages and rural areas of Shropshire. Connecting Shropshire aims to provide a minimum of 2 Mbps to all Shropshire communities and as much superfast broadband as possible. The project will deliver to communities not proposed to get either basic broadband or superfast broadband under the private sector rollout and so assists commercial providers.
--	-----	---	--	---	--	-------------	---

SOCIAL AND COMMUNITY INFRASTRUCTURE

On-site open space provision and maintenance to meet site design requirements and standards.	PRIORITY	Developers, Shropshire Council	Dependent on development	N/A		On-site design, Section 106	On-site design standards are identified within the Open Space Interim Planning Guidance (IPG) (Jan 2012) and the Natural Environment Supplementary Planning Document (SPD) (to be completed).
Provision & maintenance of facilities & equipment for sport, recreation and leisure. Includes but not limited to: <ul style="list-style-type: none"> Outdoor sports facilities. Recreational facilities for children. Allotments. 	PRIORITY	Shropshire Council, Town and Parish Councils	Dependent on development	N/A	Sport England, Fields in Trust	Neighbourhood Fund, CIL (Local)	Provision to meet assessed need.

Infrastructure Requirement	Level of Priority	Delivery Partner(s)	Timing of Delivery	Potential Cost / Funds Secured	Potential Funding		Notes
					Wider Sources	Developer Contributions	
ENVIRONMENT AND CLIMATE CHANGE							
Assessment of local flood risk	PRIORITY	Shropshire Council, Environment Agency, Severn Trent Water	Ongoing	£10,000	Flood Defence Grant in Aid	CIL (Local)	<p>The Local Flood Risk Management Strategy has identified that a number of properties in Worfield and Rudge may be at risk of flooding.</p> <p>The Parish Council, in preparing its Parish Plan, has identified further funding requirements for the following flood management measures:</p> <ul style="list-style-type: none"> • Flood defence measures for relevant properties in Worfield Village, Hilton, Wyken and Rindleford • Installation of flood water measuring gauges on River Worfe and Stratford Brook in 4 locations. • Further feasibility assessment work required.
Production of Operational Flood Response Plan	PRIORITY	Shropshire Council, Environment Agency, Severn Trent Water	Ongoing	£5,000		Section 106	<p>In accordance with the Local Flood Risk Management Strategy the operational flood response plans, produced from condition surveys of the land drainage systems, will flag who is responsible for the maintenance of the systems which serve communities.</p> <p>The aim is to promote community awareness of these drainage systems such that communities can be more resilient.</p>
TRANSPORT AND ACCESSIBILITY							

4. WIDER INVESTMENT PRIORITIES IN BRIDGNORTH PLACE PLAN AREA

- 4.1.1 In addition to the infrastructure considered vital for the achievement of the vision for Bridgnorth and consequently the Shropshire Development Strategy, there is also a significant range of wider investment priorities that have been identified for Bridgnorth, which would support the wider sustainability of the communities within the Place Plan area.
- 4.1.2 The table below sets out these investment priorities which would support the wider sustainability of the communities within the Place Plan area.

Bridgnorth Town – Wider investment priorities

Investment Requirement	Level of Priority	Delivery Partner(s)	Timing of Delivery	Potential Cost / Funds Secured	Potential Funding		Notes
					Wider Sources	Developer Contributions	
BRIDGNORTH TOWN AND PARISH							
HOUSING AND COHESIVE, SUSTAINABLE COMMUNITIES							
Improvements in housing options	KEY	Developers, Registered Providers	Ongoing				Bridgnorth Town Plan has identified a need for further rental properties and retirement homes, residential care homes and sheltered accommodation to respond to future needs.
Housing for vulnerable people	Key	Shropshire Council, Homes and Communities Agency, Registered Providers, Specialist Care Providers, Voluntary Sector, local communities, schools and colleges, West Mercia Police	Ongoing	Varies from scheme to scheme	Homes and Communities Agency, Shropshire Council capital programme		Includes provision to support sustainable independent living for vulnerable people including: <ul style="list-style-type: none"> • sustainable living at home • access to work • education and training and community inclusion Integrated preventative service provision with a <i>pathway</i> approach to access and retain accommodation. Target groups include: older people, young people, people with learning disabilities, mental health needs, people at risk of homelessness or domestic violence, gypsies and travellers, offenders, substance misusers etc.

Investment Requirement	Level of Priority	Delivery Partner(s)	Timing of Delivery	Potential Cost / Funds Secured	Potential Funding		Notes
					Wider Sources	Developer Contributions	
Improving and adapting existing housing – including regeneration	KEY	Shropshire Council, Shropshire Towns and Rural Housing Registered Providers, Home owners, Keep Shropshire Warm, Developers, Shropshire Home Improvement Agency, Schools, Sure Start Children's Centres Bridgnorth Town Council	Ongoing		Private sector funding		Includes: <ul style="list-style-type: none"> • Energy efficiency to reduce carbon emissions and tackle fuel poverty; • Upgrading social housing to meet the Decent Homes standard; and • Adaptations to meet changing needs, including disabled facilities grants. <p>Shropshire Council works with the Shropshire branch of the National Landlord's Association to encourage improvements to privately rented housing focusing on issues such as fuel efficiency, tenancy agreements, local housing allowance, invisible ink security marking, condensation problems and legislation. The 'Decent Homes' standard has been met on all ST&RH managed Council housing stock.</p> <p>The Disabled Facilities Grant for aids and adaptations is available to a maximum of £30,000 for each application based on means testing following an assessment process.</p> <p>The Town Council is keen to ensure that this meets the current and future needs of the community.</p>
Aids and adaptations for social housing tenants	KEY	Shropshire Council Shropshire Towns and Rural Housing	Ongoing		Shropshire Council		Shropshire Towns and Rural Housing manage the Council's housing stock and the procedures for aids and adaptations of Council properties. Procedures are in place for applications by tenants for minor and major adaptation requirements.
Bringing empty homes back into use – including affordable housing provision	KEY	Shropshire Council, Registered Providers, Property	2015-2017	Scheme dependent	Empty Homes: New Homes Bonus	Section 106	During the period of 2010-2013 the figures for empty homes returned to use through Shropshire Council involvement across the County were: 2010/11 – 65; Year 2 2011/12 – 94; 2012/13 – 74.

Investment Requirement	Level of Priority	Delivery Partner(s)	Timing of Delivery	Potential Cost / Funds Secured	Potential Funding		Notes
					Wider Sources	Developer Contributions	
		Owners, local communities, voluntary sector agencies, schools and colleges					£250,000 funding in 2015/16. A new Empty Homes Strategy covering the period 2014-17 has been adopted covering all of Shropshire. Empty homes action zones in Market Drayton and Oswestry have been designated.
Extra Care Housing	KEY	Shropshire Council, Registered Providers, Care Providers, Voluntary Sector, Local Communities	2015-2018	Scheme dependent	Developer led.		Locations to be determined. To include Market Town and Rural Area provision. Funding proposals being developed. Extra Care Housing provision targeted towards older people, especially frail older people, with planned provision for respite facilities and housing for people with disabilities.
Council tenants and community involvement	KEY	Shropshire Council Citizens Advice Bureau	Ongoing		Shropshire Council		The Council's remaining housing stock is managed by Shropshire Towns and Rural Housing who have a Working in Neighbourhoods Strategy. ST&RH have two Areas Panels for tenant involvement in decision making (they cover Oswestry and Bridgnorth areas).
ECONOMIC INVESTMENT AND OPPORTUNITY							
Severn Valley Railway upgrade	KEY	Severn Valley Railway, Shropshire Council, Wyre Forest District Council					Upgrades to attraction. Need to consider cross boundary issues with Wyre Forest in terms of encouraging a greater number of people to use the railway and the increased number of associated visits to Kidderminster and Bewdley.
Salop Street improvements	KEY	Shropshire Council	Ongoing		Shropshire Council		Initiate an enhancement scheme for Salop Street.

Investment Requirement	Level of Priority	Delivery Partner(s)	Timing of Delivery	Potential Cost / Funds Secured	Potential Funding		Notes
					Wider Sources	Developer Contributions	
Shop Front Redecoration Scheme	KEY	Shropshire Council Bridgnorth Town Council	Ongoing			Neighbourhood Fund	Secure funding for basic shop front repairs and redecoration to improve the appearance of the street scene.
Pavement Lights/ Cellar Flaps Program	KEY	Shropshire Council English Heritage				Neighbourhood Fund	Survey all town centre streets to assess condition and undertake repair and replacement program.
Improvement of employment opportunities	KEY	Shropshire Council Further Education Colleges					The Bridgnorth Town Plan has identified the following improvements: Apprenticeship schemes, local courses, encouragement of businesses into the area, including high skilled, and exploring new ways to provide jobs for school leavers.
Rural Enterprise Centre Chartwell Business Park	KEY	Private Developers			Private sector		The Town Council support development of a Rural Enterprise Centre. Implementation depends on private developers.
SOCIAL AND COMMUNITY INFRASTRUCTURE							
Review of Children's Centre services	PRIORITY	Shropshire Council	Dependent upon developers' timescales	Dependent upon extent and location of development	Private sector financed	Neighbourhood Fund, CIL (Local)	<p>A children's centre is defined by law as a place or group of places:</p> <ul style="list-style-type: none"> • Managed by, or on behalf of, an English local authority, with a view to securing that early childhood services are made available in an integrated manner through which early childhood services are made available – either by provision of services on site, or by the provision of advice and assistance in gaining access to services elsewhere • At which (some) activities for young children are provided on site. <p>Children's Centre services are delivered throughout Shropshire. Residential development creates the following impact on children's centres:</p> <ul style="list-style-type: none"> • A higher volume of parents and carers accessing provision in what tend to be relatively small spaces, resulting in the potential of further investment required to

Investment Requirement	Level of Priority	Delivery Partner(s)	Timing of Delivery	Potential Cost / Funds Secured	Potential Funding		Notes
					Wider Sources	Developer Contributions	
							<p>increase space.</p> <ul style="list-style-type: none"> Where the children's centre services are delivered in part of an existing school building, increasing demand for school places can result in conversion of this space back into a Primary School. <p>Facilities must therefore be reviewed and sufficient provision made available to support expected development.</p> <p>Within Bridgnorth there are currently two Children's Centres, these are St Leonards Primary - refurbished part of school; and St Mary's Bluecoat site – stand alone, purpose built demountable on school site.</p>
Fire safety in new development	PRIORITY	Developers, Shropshire Fire and Rescue Service, Shropshire Council			Developers		Shropshire Fire and Rescue Service have identified the all new development within Bridgnorth should have sprinkler systems due to likely attendance times for the service
Public safety improvements	KEY	West Mercia Police, Bronze Level tasking group					Bridgnorth Town Plan identified need for improvements in crime and safety. This will include: day and night time public safety including new CCTV to be installed in 2015, town centre policing, residential policing, improved communications with police and re-introduction of Shopwatch / Radiowatch (2015), reducing anti social behaviour, control of drugs and alcohol and monitoring CCTV effectiveness.
Adult education	KEY	Shropshire Council, Oldbury Wells and Endowed schools					The Bridgnorth Town Plan has identified a need for improved communication of existing courses and the development of more choice in multiple locations.
Healthcare facilities	KEY	NHS England	Ongoing		NHS England		The Bridgnorth Town Plan has identified the following issues:

Investment Requirement	Level of Priority	Delivery Partner(s)	Timing of Delivery	Potential Cost / Funds Secured	Potential Funding		Notes
					Wider Sources	Developer Contributions	
							<ul style="list-style-type: none"> • Improve levels of service at medical practice and hospital to meet local need and expectations, • support to the ongoing work to secure operating facilities in the town, ensure continued level of service to maternity unit and A&E. • Investigate need for a 'drop in' surgery.
Leisure use of River Severn	KEY	Bridgnorth Town Council, Low Town Action Group, Environment Agency, Existing users	Ongoing				The Bridgnorth Town Plan has suggested that investigations should be made into the scope and feasibility of greater use of the River Severn for leisure.
Petrol station / local convenience store	KEY	Developer			Developer led		The Town Council recognises the need for a new / second petrol station and appropriately sized convenience store. Potential location at junction of A458 / Wenlock Road also serving housing development on Tasley Estate land.
ENVIRONMENT AND CLIMATE CHANGE							
Coal resources/the legacy of past coal mining activity	KEY	Landowners, Developers, Coal Authority, Shropshire Council					The Coal Authority has advised that Bridgnorth is affected to some extent by the presence of coal resources at, or, close to the surface and also the legacy of past coal mining activity. Where a legacy exists and development is sought, the Coal Authority advises that there is potential need to remediate land affected by mining hazards and ensure its stability.
Urban Landscape Character Assessment	KEY	Shropshire Council	aspirational	£5,300		Neighbourhood Fund	Undertake an Urban Landscape Character Assessment of Bridgnorth
Shuts and Passageways Improvement Program	KEY	Shropshire Council, Town Council, Civic Society.	Ongoing			Neighbourhood Fund	Survey all for current conditions. Public consultation to identify key areas. Increased street cleaning program/waste collection. Re-lay/repair appropriate paving, repair/redecorate walls/ ceilings. Introduce/

Investment Requirement	Level of Priority	Delivery Partner(s)	Timing of Delivery	Potential Cost / Funds Secured	Potential Funding		Notes
					Wider Sources	Developer Contributions	
							repair/ replace identification signs to both ends of shuts. Install consistent lighting to increase use and public safety. Promotion of their use for pedestrians, tourism. Open any boarded up shut shop fronts and re-occupy. Series of interpretation boards/plaques to increase community interest and tourism
Improvements to street scene	KEY	Shropshire Council, Bridgnorth Town Council, Civic Society	Ongoing		Shropshire Council	Neighbourhood Fund	Survey to establish where modern railings should be replaced with more traditional design, plus condition survey of existing historic railings and program of repair where necessary. Identify opportunities to improve visual amenity of town centre through landscaping. The Town Plan has identified that improvements need to be made in terms of clearing litter, emptying public bins, reducing dog fouling, improving recycling and stopping fly tipping.
Town Centre improvements	KEY	Shropshire Council, Bridgnorth Town Council, Property owners, Civic Society				Neighbourhood Fund	Town Centre: develop standardised signs, develop an investment and maintenance plan and raise public awareness with implementation of signage / finger post programme (2015).
Backlands Project	KEY	Shropshire Council, Shop owners	Ongoing		Shop owners		Encourage repair/ redecoration of rear of buildings that are visible to the public (elevations, out buildings, passageways). Promote reuse/reoccupation of vacant buildings -introduce appropriate lighting. Interpret with plaques/boards at public interfaces
Pigeons/Vermin Prevention Program	KEY	Shropshire Council				Neighbourhood Fund	Deterrent program to be established including public education initiative (i.e. don't feed the pigeons). Step up garbage pick up and install appropriate garbage bins/recycling bins to hinder problem. Repair/replace old pigeon

Investment Requirement	Level of Priority	Delivery Partner(s)	Timing of Delivery	Potential Cost / Funds Secured	Potential Funding		Notes
					Wider Sources	Developer Contributions	
							netting/introduce where applicable
Survey of important views in and out of Bridgnorth.	KEY	Shropshire Council, Bridgnorth Town Council, Bridgnorth Civic Society	Ongoing.			Neighbourhood Fund	Fundamental/important town views in and out to be surveyed. Introduce accessible public areas such as walkways, promenades, seating facilities, viewing platforms.
Production of - Locally Important Buildings List.	KEY	Shropshire Council, Town Council, Civic Society, English Heritage	Ongoing			Neighbourhood Fund	Local Listing Initiatives supported by English Heritage and PPS5. undertake public consultation exercise to create list of 'Buildings of Local Architectural or Historic Interest' (non-statutory list) List would identify local heritage assets that are valued by local community but not statutorily listed that would be afforded some degree of protection in the planning system. Involves survey work, preparation of report to Cabinet, publication of list, promotion of list
The Hermitage, Bridgnorth	KEY	Shropshire Council English Heritage, Bridgnorth Town Council	Ongoing		English Heritage		Identified as heritage at risk. Integral part of town's heritage and tourism offer. Established community interest
48 Mill Street	KEY	Shropshire Council English Heritage, Bridgnorth Town Council	Ongoing		Developer contributions, Possibility of enabling development		Identified as heritage at risk. Within an Area Partnership Scheme, grant offered.
Historic Buildings	KEY	Shropshire Council, Bridgnorth Town Council					The Bridgnorth Town Plan has identified a need for more investment into key buildings, including the facade and use of Newmarket buildings. Maintain Bishops Percy House, Bridgnorth Town Hall (further improvements) and Bridgnorth Castle.
Shropshire Community	KEY	Shropshire				Neighbourhood	Opportunity for the development of a fund in

Investment Requirement	Level of Priority	Delivery Partner(s)	Timing of Delivery	Potential Cost / Funds Secured	Potential Funding		Notes
					Wider Sources	Developer Contributions	
Archaeological Fund		Council, Bridgnorth Town Council				Fund	support of targeted community-led archaeology projects.
Community Tree Scheme	KEY	Shropshire Council, Developers	Ongoing	c£2640 per ha planted with tree whips, c£260 per new street tree. Funding Secured: £5,000 to be shared throughout the council and provision of 10,000 trees	Shropshire Council Highways, Maelar Forest Nurseries, Whitchurch		Extensive Community Tree Scheme to enhance the natural environment of the area as a local community priority. Costs include planting, stakes, tree guards and watering to establish trees over first 3 years. Annual programme of 'whip' planting by Bridgnorth Town Council.
Backlands Project	KEY	Shropshire Council Shop owners	Ongoing				Encourage repair/redecoration of rear of buildings that are visible to the public (elevations, out buildings, passageways). Promote reuse/reoccupation of vacant Buildings - introduce appropriate lighting. Interpret with plaques/boards at public interfaces
Castle Walk	PRIORITY	Shropshire Council	Ongoing				Condition of Castle Walk to be maintained over the long term.
Riverside	PRIORITY	Bridgnorth Town Council	Ongoing				Condition of the Riverside to be maintained over the long term.
Bridgnorth Steps	PRIORITY	Shropshire Council	Ongoing				Condition of the Bridgnorth Steps to be maintained over the long term.
TRANSPORT AND ACCESSIBILITY							
Improvement to bus infrastructure and services	PRIORITY	Shropshire Council, All schools as	2011-2026	c£500,000 Funding Secured: £0	LTP funding		

Investment Requirement	Level of Priority	Delivery Partner(s)	Timing of Delivery	Potential Cost / Funds Secured	Potential Funding		Notes
					Wider Sources	Developer Contributions	
		part of discussion					
Develop and improve the cycle and pedestrian network	PRIORITY	Shropshire Council Community Action Team, Schools	2011-2026	c£500,000 Funding Secured: £0	Developer contributions/ LTP funding		Projects to be identified in LTP under a proactive programme of improvement to footways, ramps, crossings and signals To include consideration of: <ul style="list-style-type: none"> • Completion of route 45 riverside walking and cycling route. • The Bridgnorth Town Plan has identified a need for maintenance of footpaths and roads.
Transport provision to support Safe Place to Be at Secondary School	KEY	Shropshire Council, Schools – secondary and feeder primaries, Shropshire Link	Ongoing				Prevent year on year question of whether or not provision will be possible. Consultation should identify need of working parents to be supported and access to provision for pupils living in the hinterland.
Various rights of way improvements to create new circular walks - removal of stiles and replacement of gates and enhanced directional signage to ensure easier access for all and to support 'Active Market Town' and sustainable transport initiatives	KEY	Shropshire Council	2011-2026	£18,900.00 Funding Secured: £0	LTP funding	Neighbourhood Fund	Replacing 42 existing stiles with gates for easier access improvements to the Rights of Way network and providing 49 new directional signposts Creation and enhancement of routes to create new circular walks and promotion of 'health walks' and 'walking for health schemes' The Council's Extended Schools Team has identified the need to tie in with 'Healthy Living' work in schools, preschool settings and youth organisations. There is an opportunity for young people and families to participate in planning the design of new routes.
The Severn Way long distance footpath and Jack Mytton Way long distance bridleway	KEY	Shropshire Council	Aspirational		Shropshire Council capital programme,		Creation, enhancement and promotion of The Jack Mytton Way and the Severn Way footpath including tackling knotweed problems on the path alongside the river

Investment Requirement	Level of Priority	Delivery Partner(s)	Timing of Delivery	Potential Cost / Funds Secured	Potential Funding		Notes
					Wider Sources	Developer Contributions	
					LTP		
Installation of historic finger posts, waymarkers, milestones, mileposts and street signs.	KEY	Shropshire Council	Ongoing			Neighbourhood Fund	Survey of existing conditions and research into lost features. Repair or reinstate where necessary. Provide additional signposting at other locations within Severn Park Building and Severn Valley Railway.
Pedestrianisation of High Street on Market Day	KEY	Shropshire Council		£50,000			The Bridgnorth Town Plan has identified that modifications can be made to High Street in order to facilitate market day pedestrianisation of High Street
Improvement of car parks	KEY	Shropshire Council	Ongoing			Neighbourhood Fund	Identify opportunities to improve the visual amenity of car parks in the historic town centre. Increase provision of wayfinding signs and landscaping. The Bridgnorth Town Plan has identified a need for retaining free short term parking on High Street.

Community Hubs – Wider investment priorities

Investment Requirement	Level of Priority	Delivery Partner(s)	Timing of Delivery	Potential Cost / Funds Secured	Potential Funding		Notes
					Wider Sources	Developer Contributions	
DITTON PRIORS COMMUNITY HUB AND PARISH							
HOUSING AND COHESIVE, SUSTAINABLE COMMUNITIES							
Housing Needs Assessment	KEY	Ditton Priors Parish Council, Shropshire Council				Neighbourhood Fund	The Parish Council has identified the need for a Housing Needs Survey to be conducted
ECONOMIC INVESTMENT AND OPPORTUNITY							
Marketing rural Shropshire as a tourism destination	KEY	Shropshire Council, Ditton Priors Parish Council					Ditton Priors Parish Council has identified the need to promote the area and encourage more homes to offer Bed and Breakfast.
SOCIAL AND COMMUNITY INFRASTRUCTURE							
Provision for children and young people	KEY	Ditton Priors Parish Council, Shropshire Council, Village Hall Committee, Ditton Priors Playfield Association					The Parish Council has identified the need for a holiday scheme, secondary school club and possible youth club.
Mobile phone coverage	KEY	Mobile phone operators, Ditton Priors Parish Council			Mobile phone operators		The Parish Council has identified a need for improved mobile phone coverage.
Ditton priors community land trust	KEY	Ditton Priors Parish Council				Neighbourhood Fund	Identified community priority.
ENVIRONMENT AND CLIMATE CHANGE							
Community Tree Scheme	KEY	Shropshire Council, Developers	Ongoing	c£2640 per ha planted with tree	Shropshire Council Highways,		Extensive Community Tree Scheme to enhance the natural environment of the area as a local community priority. Costs include

Investment Requirement	Level of Priority	Delivery Partner(s)	Timing of Delivery	Potential Cost / Funds Secured	Potential Funding		Notes
					Wider Sources	Developer Contributions	
				whips, c£260 per new street tree. Funding Secured: £5,000 to be shared throughout the council and provision of 10,000 trees	Maelar Forest Nurseries, Whitchurch		planting, stakes, tree guards and watering to establish trees over first 3 years.
TRANSPORT AND ACCESSIBILITY							
Street Lighting	PRIORITY	Ditton Priors Parish Council, Shropshire Council		Cost: £21k Funding Secured: £21K through Public works loan	£21K through Public works loan		The Parish Council is replacing all its street lighting stock and has secured a £21k public works loan for much of the work. The Parish would like to consider using CIL income to support the repayment of this loan.

Community Clusters – Wider investment priorities

Investment Requirement	Level of Priority	Delivery Partner(s)	Timing of Delivery	Potential Cost / Funds Secured	Potential Funding		Notes
					Wider Sources	Developer Contributions	
NEENTON COMMUNITY CLUSTER AND ASSOCIATED PARISH							
HOUSING AND COHESIVE, SUSTAINABLE COMMUNITIES							
ECONOMIC INVESTMENT AND OPPORTUNITY							
SOCIAL AND COMMUNITY INFRASTRUCTURE							
ENVIRONMENT AND CLIMATE CHANGE							
Community Tree Scheme	KEY	Shropshire Council, Developers	Ongoing	c£2640 per ha planted with tree whips, c£260 per new street tree. Funding Secured: £5,000 to be shared throughout the council and provision of 10,000 trees	Shropshire Council Highways, Maelar Forest Nurseries, Whitchurch		Extensive Community Tree Scheme to enhance the natural environment of the area as a local community priority. Costs include planting, stakes, tree guards and watering to establish trees over first 3 years.
TRANSPORT AND ACCESSIBILITY							

Investment Requirement	Level of Priority	Delivery Partner(s)	Timing of Delivery	Potential Cost / Funds Secured	Potential Funding		Notes
					Wider Sources	Developer Contributions	
ACTON ROUND, ASTON EYRE, MONKHOPTON, MORVILLE AND UPTON CRESSETT COMMUNITY CLUSTER AND ASSOCIATED PARISHES							
HOUSING AND COHESIVE, SUSTAINABLE COMMUNITIES							
ECONOMIC INVESTMENT AND OPPORTUNITY							
SOCIAL AND COMMUNITY INFRASTRUCTURE							
Improvements to playing field	KEY	Morville Parish Council, Shropshire Council, Morville School				Neighbourhood Fund	The Parish Council would like to discuss improvements to the playing field which is used by the school but owned by the Parish Council.
ENVIRONMENT AND CLIMATE CHANGE							
Roadside improvements	KEY	Morville Parish Council					The Parish Council would like to increase finance for parish lengthsman.
Heritage at risk- places of worship	KEY	Shropshire Council, Hereford Diocese				Charitable funders	Places of worship are not currently included on the Heritage at Risk Register but there are potential additions which include Monkhopton. These places of worship are in the Hereford Diocese and have substantial repairs on the offing, typically in rural locations and with the potential to develop more community uses in order to improve their sustainability.
Community Tree Scheme	KEY	Shropshire Council, Developers	Ongoing	c£2640 per ha planted with tree whips, c£260 per new street tree. Funding Secured: £5,000 to be shared	Shropshire Council Highways, Maelar Forest Nurseries, Whitchurch		Extensive Community Tree Scheme to enhance the natural environment of the area as a local community priority. Costs include planting, stakes, tree guards and watering to establish trees over first 3 years.

Investment Requirement	Level of Priority	Delivery Partner(s)	Timing of Delivery	Potential Cost / Funds Secured	Potential Funding		Notes
					Wider Sources	Developer Contributions	
				throughout the council and provision of 10,000 trees			
TRANSPORT AND ACCESSIBILITY							

Rural Hinterland – Wider investment priorities

Investment Requirement	Level of Priority	Delivery Partner(s)	Timing of Delivery	Potential Cost / Funds Secured	Potential Funding		Notes
					Wider Sources	Developer Contributions	
ALVELEY AND ROMSLEY							
HOUSING AND COHESIVE, SUSTAINABLE COMMUNITIES							
ECONOMIC INVESTMENT AND OPPORTUNITY							
Employment opportunities at Alveley Industrial Estate	PRIORITY	Shropshire Council Private Sector		N/A			The Parish Council identify that more local employment is required if the village is to become more sustainable
SOCIAL AND COMMUNITY INFRASTRUCTURE							
Improvements to the Village Hall	KEY	Village Hall Committee		£15,000 for roof repairs		Neighbourhood Fund	The Parish Council has identified the need for repairs to the village hall roof.
Provision for the elderly	KEY	Alveley & Romsley PC, Shropshire Council, Local organisations inc. Age U.K.	Ongoing	As developed		Neighbourhood Fund	More activities are required, widened from Arden Centre. Befriending projects Need for social and active life-style projects required Attention given to inter-generational activities Consideration of new housing / care needs
Neighbourhood Watch	KEY	Alveley and Romsley Parish Council,	2015	West Mercia Police to determine in		Neighbourhood Fund	Investigate feasibility of establishing Neighbourhood Watch scheme for communities in Alveley & Romsley Parish.

Investment Requirement	Level of Priority	Delivery Partner(s)	Timing of Delivery	Potential Cost / Funds Secured	Potential Funding		Notes
					Wider Sources	Developer Contributions	
		West Mercia Police		consultation with Parish Council			
ENVIRONMENT AND CLIMATE CHANGE							
Community Tree Scheme	KEY	Shropshire Council, Developers	Ongoing	c£2640 per ha planted with tree whips, c£260 per new street tree. Funding Secured: £5,000 to be shared throughout the council and provision of 10,000 trees	Shropshire Council Highways, Maelar Forest Nurseries, Whitchurch		Extensive Community Tree Scheme to enhance the natural environment of the area as a local community priority. Costs include planting, stakes, tree guards and watering to establish trees over first 3 years. Requirement to identify suitable sites in Alveley and people to carry out ongoing maintenance
TRANSPORT AND ACCESSIBILITY							

Investment Requirement	Level of Priority	Delivery Partner(s)	Timing of Delivery	Potential Cost / Funds Secured	Potential Funding		Notes
					Wider Sources	Developer Contributions	
ASTLEY ABBOTTS							
HOUSING AND COHESIVE, SUSTAINABLE COMMUNITIES							
Carry out Housing Needs Survey	KEY	Astley Abbots Parish Council, Shropshire Council		Cost: c£2,000	Parish Council, Shropshire Council	Neighbourhood Fund	Identified through the Parish Plan.
ECONOMIC INVESTMENT AND OPPORTUNITY							
SOCIAL AND COMMUNITY INFRASTRUCTURE							
Crime & Community	KEY	Astley Abbots			West Midlands		Identified community priority.

Investment Requirement	Level of Priority	Delivery Partner(s)	Timing of Delivery	Potential Cost / Funds Secured	Potential Funding		Notes
					Wider Sources	Developer Contributions	
safety- detailed survey		Parish Council, West Midlands Police			Police		
Children & young people- need further detailed survey	KEY	Astley Abbots Parish Council, Shropshire Youth				Neighbourhood Fund	Identified community priority.
Communication within village	KEY	Astley Abbots Parish Council				Neighbourhood Fund	Development of a Parish newsletter and website.

ENVIRONMENT AND CLIMATE CHANGE

Community Tree Scheme	KEY	Shropshire Council, Developers	Ongoing	c£2640 per ha planted with tree whips, c£260 per new street tree. Funding Secured: £5,000 to be shared throughout the council and provision of 10,000 trees	Shropshire Council Highways, Maelar Forest Nurseries, Whitchurch		Extensive Community Tree Scheme to enhance the natural environment of the area as a local community priority. Costs include planting, stakes, tree guards and watering to establish trees over first 3 years.
-----------------------	-----	-----------------------------------	---------	---	--	--	---

TRANSPORT AND ACCESSIBILITY

--	--	--	--	--	--	--	--

Investment Requirement	Level of Priority	Delivery Partner(s)	Timing of Delivery	Potential Cost / Funds Secured	Potential Funding		Notes
					Wider Sources	Developer Contributions	

ASTON BOTTERELL

HOUSING AND COHESIVE, SUSTAINABLE COMMUNITIES

--	--	--	--	--	--	--	--

Investment Requirement	Level of Priority	Delivery Partner(s)	Timing of Delivery	Potential Cost / Funds Secured	Potential Funding		Notes
					Wider Sources	Developer Contributions	
ECONOMIC INVESTMENT AND OPPORTUNITY							
SOCIAL AND COMMUNITY INFRASTRUCTURE							
ENVIRONMENT AND CLIMATE CHANGE							
Charlecotte Furnace	KEY	Shropshire Council, English Heritage, Aston Botterell, Burwarton and Cleobury North Parish Council				High Level Stewardship	Identified as heritage at risk. Established community interest.
Community Tree Scheme	KEY	Shropshire Council, Developers	Ongoing	c£2640 per ha planted with tree whips, c£260 per new street tree. Funding Secured: £5,000 to be shared throughout the council and provision of 10,000 trees	Shropshire Council Highways, Maelar Forest Nurseries, Whitchurch		Extensive Community Tree Scheme to enhance the natural environment of the area as a local community priority. Costs include planting, stakes, tree guards and watering to establish trees over first 3 years.
TRANSPORT AND ACCESSIBILITY							
Roadside improvements	KEY	Aston Botterell, Burwarton and Cleobury North Parish Council				Neighbourhood Fund	The Parish Council would like to increase finance for parish lengthsman which is currently funded by a £3,000 grant from Shropshire Council.

Investment Requirement	Level of Priority	Delivery Partner(s)	Timing of Delivery	Potential Cost / Funds Secured	Potential Funding		Notes
					Wider Sources	Developer Contributions	
BILLINGSLEY							
HOUSING AND COHESIVE, SUSTAINABLE COMMUNITIES							
ECONOMIC INVESTMENT AND OPPORTUNITY							
SOCIAL AND COMMUNITY INFRASTRUCTURE							
ENVIRONMENT AND CLIMATE CHANGE							
Community Tree Scheme	KEY	Shropshire Council, Developers	Ongoing	c£2640 per ha planted with tree whips, c£260 per new street tree. Funding Secured: £5,000 to be shared throughout the council and provision of 10,000 trees	Shropshire Council Highways, Maelar Forest Nurseries, Whitchurch		Extensive Community Tree Scheme to enhance the natural environment of the area as a local community priority. Costs include planting, stakes, tree guards and watering to establish trees over first 3 years.
TRANSPORT AND ACCESSIBILITY							
Roadside improvements	KEY	Billingsley, Deuxhill, Glazeley and Middleton Scriven Parish Council				Neighbourhood Fund	The Parish Council would like to increase finance for parish lengthsman.
Investment Requirement	Level of Priority	Delivery Partner(s)	Timing of Delivery	Potential Cost / Funds Secured	Potential Funding		Notes
					Wider Sources	Developer Contributions	

Investment Requirement	Level of Priority	Delivery Partner(s)	Timing of Delivery	Potential Cost / Funds Secured	Potential Funding		Notes
					Wider Sources	Developer Contributions	
BURWARTON							
HOUSING AND COHESIVE, SUSTAINABLE COMMUNITIES							
ECONOMIC INVESTMENT AND OPPORTUNITY							
SOCIAL AND COMMUNITY INFRASTRUCTURE							
ENVIRONMENT AND CLIMATE CHANGE							
Community Tree Scheme	KEY	Shropshire Council, Developers	Ongoing	c£2640 per ha planted with tree whips, c£260 per new street tree. Funding Secured: £5,000 to be shared throughout the council and provision of 10,000 trees	Shropshire Council Highways, Maelar Forest Nurseries, Whitchurch		Extensive Community Tree Scheme to enhance the natural environment of the area as a local community priority. Costs include planting, stakes, tree guards and watering to establish trees over first 3 years.
TRANSPORT AND ACCESSIBILITY							
Roadside improvements	KEY	Aston Botterell, Burwarton and Cleobury North Parish Council				Neighbourhood Fund	The Parish Council would like to increase finance for parish lengthsman which is currently funded by a £3000 grant from Shropshire Council.
CHETTON							
Investment Requirement	Level of Priority	Delivery Partner(s)	Timing of Delivery	Potential Cost / Funds Secured	Potential Funding		Notes
					Wider Sources	Developer Contributions	

Investment Requirement	Level of Priority	Delivery Partner(s)	Timing of Delivery	Potential Cost / Funds Secured	Potential Funding		Notes
					Wider Sources	Developer Contributions	
HOUSING AND COHESIVE, SUSTAINABLE COMMUNITIES							
ECONOMIC INVESTMENT AND OPPORTUNITY							
SOCIAL AND COMMUNITY INFRASTRUCTURE							
Support for village hall	KEY	Chetton Parish Council				Neighbourhood Fund	The Parish Council seek greater support for the village hall and investigating available funding for low energy lighting, heating and thermal insulation. Village hall now to provide ICT WiFi hub with improvements to building fabric funded by Parish Council to accommodate extended usage of building.
ENVIRONMENT AND CLIMATE CHANGE							
Community Tree Scheme	KEY	Shropshire Council, Developers	Ongoing	c£2640 per ha planted with tree whips, c£260 per new street tree. Funding Secured: £5,000 to be shared throughout the council and provision of 10,000 trees	Shropshire Council Highways, Maelar Forest Nurseries, Whitchurch		Extensive Community Tree Scheme to enhance the natural environment of the area as a local community priority. Costs include planting, stakes, tree guards and watering to establish trees over first 3 years.
TRANSPORT AND ACCESSIBILITY							
Roadside improvements	KEY	Chetton Parish Council				Neighbourhood Fund	The Parish Council would like to increase finance for parish lengthsman.

Investment Requirement	Level of Priority	Delivery Partner(s)	Timing of Delivery	Potential Cost / Funds Secured	Potential Funding		Notes
					Wider Sources	Developer Contributions	

Investment Requirement	Level of Priority	Delivery Partner(s)	Timing of Delivery	Potential Cost / Funds Secured	Potential Funding		Notes
					Wider Sources	Developer Contributions	
CLAVERLEY							
HOUSING AND COHESIVE, SUSTAINABLE COMMUNITIES							
ECONOMIC INVESTMENT AND OPPORTUNITY							
SOCIAL AND COMMUNITY INFRASTRUCTURE							
ENVIRONMENT AND CLIMATE CHANGE							
Improvements to the Streetscene	KEY	Claverley Parish Council, Shropshire Council		c£8,000 (for phase 1).		CIL Local/ Neighbourhood Fund	The Parish Council has identified the need for the following: Rolling programme for replacement of existing streetlights with conservation style lamps that can be fitted with LED bulbs so as to lower future operating and maintenance costs and create a more sustainable, environmentally friendly approach to community street lighting.
Claverley in Bloom Scheme	KEY	Claverley Parish Council				Neighbourhood Fund	The Parish Council has identified the need to implement a parish-wide programme of sustainable environmental improvement.
Community Tree Scheme	KEY	Shropshire Council, Developers	Ongoing	c£2640 per ha planted with tree whips, c£260 per new street tree. Funding Secured: £5,000 to be shared throughout the council and provision of 10,000 trees	Shropshire Council Highways, Maelar Forest Nurseries, Whitchurch		Extensive Community Tree Scheme to enhance the natural environment of the area as a local community priority. Costs include planting, stakes, tree guards and watering to establish trees over first 3 years.

Investment Requirement	Level of Priority	Delivery Partner(s)	Timing of Delivery	Potential Cost / Funds Secured	Potential Funding		Notes
					Wider Sources	Developer Contributions	
TRANSPORT AND ACCESSIBILITY							

Investment Requirement	Level of Priority	Delivery Partner(s)	Timing of Delivery	Potential Cost / Funds Secured	Potential Funding		Notes
					Wider Sources	Developer Contributions	
CLEOBURY NORTH							
HOUSING AND COHESIVE, SUSTAINABLE COMMUNITIES							
ECONOMIC INVESTMENT AND OPPORTUNITY							
SOCIAL AND COMMUNITY INFRASTRUCTURE							
ENVIRONMENT AND CLIMATE CHANGE							

Community Tree Scheme	KEY	Shropshire Council, Developers	Ongoing	c£2640 per ha planted with tree whips, c£260 per new street tree. Funding Secured: £5,000 to be shared throughout the council and provision of 10,000 trees	Shropshire Council Highways, Maelar Forest Nurseries, Whitchurch		Extensive Community Tree Scheme to enhance the natural environment of the area as a local community priority. Costs include planting, stakes, tree guards and watering to establish trees over first 3 years.
-----------------------	-----	--------------------------------	---------	--	--	--	---

TRANSPORT AND ACCESSIBILITY							
Roadside improvements	KEY	Aston Botterell, Burwarton and Cleobury North Parish Council				Neighbourhood Fund	Identified community priority.

Investment Requirement	Level of Priority	Delivery Partner(s)	Timing of Delivery	Potential Cost / Funds Secured	Potential Funding		Notes
					Wider Sources	Developer Contributions	
DEUXHILL							
HOUSING AND COHESIVE, SUSTAINABLE COMMUNITIES							
ECONOMIC INVESTMENT AND OPPORTUNITY							
SOCIAL AND COMMUNITY INFRASTRUCTURE							
ENVIRONMENT AND CLIMATE CHANGE							
Community Tree Scheme	KEY	Shropshire Council, Developers	Ongoing	c£2640 per ha planted with tree whips, c£260 per new street tree. Funding Secured: £5,000 to be shared throughout the council and provision of 10,000 trees	Shropshire Council Highways, Maelar Forest Nurseries, Whitchurch		Extensive Community Tree Scheme to enhance the natural environment of the area as a local community priority. Costs include planting, stakes, tree guards and watering to establish trees over first 3 years.
TRANSPORT AND ACCESSIBILITY							
Roadside improvements	KEY	Billingsley, Deuxhill, Glazeley and Middleton Scriven Parish Council				Neighbourhood Fund	Identified community priority. The Parish Council would like to increase finance for parish lengthsman.

Investment Requirement	Level of Priority	Delivery Partner(s)	Timing of Delivery	Potential Cost / Funds Secured	Potential Funding		Notes
					Wider Sources	Developer Contributions	
EARDINGTON							
HOUSING AND COHESIVE, SUSTAINABLE COMMUNITIES							
ECONOMIC INVESTMENT AND OPPORTUNITY							
SOCIAL AND COMMUNITY INFRASTRUCTURE							
ENVIRONMENT AND CLIMATE CHANGE							
Community Tree Scheme	KEY	Shropshire Council, Developers	Ongoing	c£2640 per ha planted with tree whips, c£260 per new street tree. Funding Secured: £5,000 to be shared throughout the council and provision of 10,000 trees	Shropshire Council Highways, Maelar Forest Nurseries, Whitchurch		Extensive Community Tree Scheme to enhance the natural environment of the area as a local community priority. Costs include planting, stakes, tree guards and watering to establish trees over first 3 years.
TRANSPORT AND ACCESSIBILITY							
Roadside improvements	KEY	Eardington Parish Council				Neighbourhood Fund	Identified community priority.

Investment Requirement	Level of Priority	Delivery Partner(s)	Timing of Delivery	Potential Cost / Funds Secured	Potential Funding		Notes
					Wider Sources	Developer Contributions	
GLAZELEY							
HOUSING AND COHESIVE, SUSTAINABLE COMMUNITIES							

Investment Requirement	Level of Priority	Delivery Partner(s)	Timing of Delivery	Potential Cost / Funds Secured	Potential Funding		Notes
					Wider Sources	Developer Contributions	
ECONOMIC INVESTMENT AND OPPORTUNITY							
SOCIAL AND COMMUNITY INFRASTRUCTURE							
ENVIRONMENT AND CLIMATE CHANGE							
Community Tree Scheme	KEY	Shropshire Council, Developers	Ongoing	c£2640 per ha planted with tree whips, c£260 per new street tree. Funding Secured: £5,000 to be shared throughout the council and provision of 10,000 trees	Shropshire Council Highways, Maelar Forest Nurseries, Whitchurch		Extensive Community Tree Scheme to enhance the natural environment of the area as a local community priority. Costs include planting, stakes, tree guards and watering to establish trees over first 3 years.
TRANSPORT AND ACCESSIBILITY							
Roadside improvements	KEY	Billingsley, Deuxhill, Glazeley and Middleton Scriven Parish Council				Neighbourhood Fund	Identified community priority.

Investment Requirement	Level of Priority	Delivery Partner(s)	Timing of Delivery	Potential Cost / Funds Secured	Potential Funding		Notes
					Wider Sources	Developer Contributions	
MIDDLETON SCRIVEN							
HOUSING AND COHESIVE, SUSTAINABLE COMMUNITIES							
ECONOMIC INVESTMENT AND OPPORTUNITY							

Investment Requirement	Level of Priority	Delivery Partner(s)	Timing of Delivery	Potential Cost / Funds Secured	Potential Funding		Notes
					Wider Sources	Developer Contributions	
SOCIAL AND COMMUNITY INFRASTRUCTURE							
ENVIRONMENT AND CLIMATE CHANGE							
Community Tree Scheme	KEY	Shropshire Council, Developers	Ongoing	c£2640 per ha planted with tree whips, c£260 per new street tree. Funding Secured: £5,000 to be shared throughout the council and provision of 10,000 trees	Shropshire Council Highways, Maelar Forest Nurseries, Whitchurch		Extensive Community Tree Scheme to enhance the natural environment of the area as a local community priority. Costs include planting, stakes, tree guards and watering to establish trees over first 3 years.
TRANSPORT AND ACCESSIBILITY							
Roadside improvements	KEY	Billingsley, Deuxhill, Glazeley and Middleton Scriven Parish Council				Neighbourhood Fund	Identified community priority. The Parish Council would like to increase finance for parish lengthsman.

Investment Requirement	Level of Priority	Delivery Partner(s)	Timing of Delivery	Potential Cost / Funds Secured	Potential Funding		Notes
					Wider Sources	Developer Contributions	
QUATT MALVERN							
HOUSING AND COHESIVE, SUSTAINABLE COMMUNITIES							
ECONOMIC INVESTMENT AND OPPORTUNITY							

Investment Requirement	Level of Priority	Delivery Partner(s)	Timing of Delivery	Potential Cost / Funds Secured	Potential Funding		Notes
					Wider Sources	Developer Contributions	
SOCIAL AND COMMUNITY INFRASTRUCTURE							
ENVIRONMENT AND CLIMATE CHANGE							
Community Tree Scheme	KEY	Shropshire Council, Developers	Ongoing	c£2640 per ha planted with tree whips, c£260 per new street tree. Funding Secured: £5,000 to be shared throughout the council and provision of 10,000 trees	Shropshire Council Highways, Maelar Forest Nurseries, Whitchurch		Extensive Community Tree Scheme to enhance the natural environment of the area as a local community priority. Costs include planting, stakes, tree guards and watering to establish trees over first 3 years.
TRANSPORT AND ACCESSIBILITY							
Roadside improvements	KEY	Billingsley, Deuxhill, Glazeley and Middleton Scriven Parish Council				Neighbourhood Fund	Identified community priority. The Parish Council would like to increase finance for parish lengthsman.

Investment Requirement	Level of Priority	Delivery Partner(s)	Timing of Delivery	Potential Cost / Funds Secured	Potential Funding		Notes
					Wider Sources	Developer Contributions	
SUTTON MADDOCK							
HOUSING AND COHESIVE, SUSTAINABLE COMMUNITIES							
ECONOMIC INVESTMENT AND OPPORTUNITY							
SOCIAL AND COMMUNITY INFRASTRUCTURE							

Investment Requirement	Level of Priority	Delivery Partner(s)	Timing of Delivery	Potential Cost / Funds Secured	Potential Funding		Notes
					Wider Sources	Developer Contributions	
ENVIRONMENT AND CLIMATE CHANGE							
Community Tree Scheme	KEY	Shropshire Council, Developers	Ongoing	c£2640 per ha planted with tree whips, c£260 per new street tree. Funding Secured: £5,000 to be shared throughout the council and provision of 10,000 trees	Shropshire Council Highways, Maelar Forest Nurseries, Whitchurch		Extensive Community Tree Scheme to enhance the natural environment of the area as a local community priority. Costs include planting, stakes, tree guards and watering to establish trees over first 3 years.
TRANSPORT AND ACCESSIBILITY							
Roadside improvements	KEY	Billingsley, Deuxhill, Glazeley and Middleton Scriven Parish Council				Neighbourhood Fund	Identified community priority. The Parish Council would like to increase finance for parish lengthsmen.

Investment Requirement	Level of Priority	Delivery Partner(s)	Timing of Delivery	Potential Cost / Funds Secured	Potential Funding		Notes
					Wider Sources	Developer Contributions	
TASLEY							
HOUSING AND COHESIVE, SUSTAINABLE COMMUNITIES							
<i>The Parish Council have stated that much of this part of the place plan will need Bridgnorth Town Council and Tasley Parish Council to work together to develop an inter-dependent community infrastructure and promote the aspirations of both councils. The aim is that the town and parish both flourish as separately identifiable communities which respect and enhance the well-being of each other by a close and cooperative working relationship.</i>							
Quality built residential development	KEY	Developers, Registered Providers,			Developer led		The Parish Council wish to see quality build residential development in the Parish, linked to the SAMDev settlement strategy for

Investment Requirement	Level of Priority	Delivery Partner(s)	Timing of Delivery	Potential Cost / Funds Secured	Potential Funding		Notes
					Wider Sources	Developer Contributions	
		Tasley Parish Council, Bridgnorth Town Council, Shropshire Council					Bridgnorth / Tasley
ECONOMIC INVESTMENT AND OPPORTUNITY							
SOCIAL AND COMMUNITY INFRASTRUCTURE							
Further action on anti-social behaviour	PRIORITY	West Mercia Police, Shropshire Council, Parish Council	Ongoing				The Parish Council has identified anti-social behaviour and drug-related crime as an issue in Tasley / Bridgnorth. Considerable progress has been made to address these problems.
Continuing support for the existing Tasley Village hall	PRIORITY	Parish Council, Shropshire Council				Neighbourhood Fund	Tasley Village Hall is used extensively for a wide variety of events throughout the week including regular group meetings, parish social events and village celebrations such as the Queen's Jubilee.
ENVIRONMENT AND CLIMATE CHANGE							
Community Tree Scheme	KEY	Shropshire Council, Developers	Ongoing	c£2640 per ha planted with tree whips, c£260 per new street tree. Funding Secured: £5,000 to be shared throughout the council and provision of 10,000 trees	Shropshire Council Highways, Maelar Forest Nurseries, Whitchurch		Extensive Community Tree Scheme to enhance the natural environment of the area as a local community priority. Costs include planting, stakes, tree guards and watering to establish trees over first 3 years.

Investment Requirement	Level of Priority	Delivery Partner(s)	Timing of Delivery	Potential Cost / Funds Secured	Potential Funding		Notes
					Wider Sources	Developer Contributions	
TRANSPORT AND ACCESSIBILITY							
Improved street lighting	PRIORITY	Tasley Parish Council				Neighbourhood Fund	Identified community priority. Parish Council has identified a need for improved street lighting in Church Lane between Tasley Village Hall and Racecourse Drive.

Investment Requirement	Level of Priority	Delivery Partner(s)	Timing of Delivery	Potential Cost / Funds Secured	Potential Funding		Notes
					Wider Sources	Developer Contributions	

WORFIELD AND RUDGE

HOUSING AND COHESIVE, SUSTAINABLE COMMUNITIES

--	--	--	--	--	--	--	--

ECONOMIC INVESTMENT AND OPPORTUNITY

--	--	--	--	--	--	--	--

SOCIAL AND COMMUNITY INFRASTRUCTURE

Improvements to Recreation Room		Parish Council				Neighbourhood Fund	The Parish Council, in preparing its Parish Plan, has identified a need for further funding to upgrade the following items in the Worfield Recreation Room: <ul style="list-style-type: none"> • Lavatories. • Electrical lighting and power circuits.
---------------------------------	--	----------------	--	--	--	--------------------	--

ENVIRONMENT AND CLIMATE CHANGE

Community Tree Scheme	KEY	Shropshire Council, Developers	Ongoing	c£2640 per ha planted with tree whips, c£260 per new street tree. Funding Secured: £5,000 to be shared throughout the council and provision of 10,000	Shropshire Council Highways, Maelar Forest Nurseries, Whitchurch		Extensive Community Tree Scheme to enhance the natural environment of the area as a local community priority. Costs include planting, stakes, tree guards and watering to establish trees over first 3 years.
-----------------------	-----	--------------------------------	---------	---	--	--	---

Investment Requirement	Level of Priority	Delivery Partner(s)	Timing of Delivery	Potential Cost / Funds Secured	Potential Funding		Notes
					Wider Sources	Developer Contributions	
				trees			
TRANSPORT AND ACCESSIBILITY							
Street lighting improvements	KEY	Shropshire Council, Parish Council				Neighbourhood Fund	The Parish Council, in preparing its Parish Plan, has identified a need to upgrade and modernise the parish street lighting to low energy consumption LED units. Further feasibility and financial assessment required

APPENDIX A: COMMUNITY ENGAGEMENT AND CONSULTATION FOR BRIDGNORTH PLACE PLAN AREA

Community Led Plans

Bridgnorth Town Plan (December 2011)

The following have been identified as community needs and priorities within the Bridgnorth Town Plan:

- Greater use of the bandstand
- Castle Walk improvement programme
- Repair and maintain Bridgnorth Steps
- Riverside revitalisation programme
- Severn Park visitor's centre
- Improvements to the town centre
- Maintain and enhance historic buildings
- Clearance of litter
- Emptying of public bins
- Dog fouling
- Refuse collection
- Stopping fly-tipping
- Continued level of service at the medical practice
- Continued level of service and survival of facilities at Bridgnorth Hospital, including maternity unit and A&E
- Secure operating theatre at Bridgnorth Hospital
- Maintain existing levels of social care
- Investigate potential need for out of hours facilities at the medical practice and outreach services
- NHS Dental services
- Development of a new leisure facility
- Development of St Leonard's Church as a new community resource
- Improvement of existing children's play facilities
- Further activity centres for teenagers
- Improve facilities at Castle Hall/Community Centre
- Investigate feasibility of greater use of the River Severn
- Adult education
- Skills development and apprenticeship schemes
- Assist new business start-ups and encourage high skill employers
- More locally controlled car parks and better signage
- Maintain free short stay car parking in the High Street
- Improvements to bus services to cater for local needs and increase provision of bus shelters
- Investigate feasibility of a Park and Ride
- Improve maintenance of roads and pavements
- More diverse range of shops, including independent shops
- Improve appearance of shop fronts
- Control business signage
- Maintain and improve the library and information centre
- Improve toilet facilities

- Maintain existing restaurants and pub facilities
- Stop further increase of charity shops
- Encourage focus on local trade and produce
- Take action against use of A-boards which jeopardise pedestrian safety
- Maintain Town's Fair Trade Policy
- High Street pedestrianisation
- Increase affordable housing
- Encourage provision of rented housing, flats/ apartments, social housing for local needs, retirement homes, residential care homes and sheltered housing
- Improve promotion of Bridgnorth
- Provision of tourist accommodation
- Promote existing events and festivals
- Improve public safety-at night and during the day, town centre and residential policing
- Speed limit enforcement
- Reduce anti-social behaviour

Ditton Priors Parish Plan (2006)

The following have been taken from the Ditton Priors Parish Plan as identified community needs and priorities:

- Transport, traffic and road safety
- Environment
- Housing
- Noise pollution
- Light pollution
- Refuse
- Public Rights of Way
- Provision of facilities
- Open space provision
- Trees, hedgerows and wildlife
- Agriculture
- Tourism
- Employment opportunities
- Traffic and road safety
- Social activities and lifelong learning for both young people and adults
- More communication

A review of the Parish Plan will commenced in 2012. A new Action Plan will reflect the needs of the Parish.

Ditton Priors has an emerging Community Land Trust at Oak Farm Station Road.

Morville Acton Round, Aston Eyre, Monkhopton and Upton

A Parish Plan for Morville, Acton Round, Aston Eyre, Monkhopton and Upton exists, further information will be provided in due course.

Neenton

No Parish Plan currently exists, but the Parish Council have expressed an interest in developing a Parish Plan, further updates will be provided in due course.

Alveley

The following have been taken from the Alveley Parish Plan as identified community needs and priorities:

- The built environment
- Faith and leisure activities
- Sports facilities and activities
- Village hall and community facilities
- Green space and countryside
- Facilities for young people and the elderly
- Policing and community safety issues
- Land use and planning
- Policing and community safety issues
- Housing e.g. affordability and supply, including sheltered accommodation
- Environment and conservation

The Parish Council have begun a review of the Parish Plan, further updates will be provided in due course. The Parish council wish to use the following local vision for their area:

The people of Alveley and Romsley wish to see a flourishing village recognising its boundaries within the Green Belt and the limits of development within it.

This means a place that outlying areas within the two parishes will be able to look to the village centre for services such as shopping and primary schooling together with social, recreational and sporting activities, which have been revitalised and enhanced by local voluntary effort by local public agencies and service providers.

Claverley Parish Plan (2005-2015)

The following have been taken from the Claverley Parish Plan as identified community needs and priorities:

- Future development
- Facilities and services
- Housing, building and street lighting
- Community facilities including the shop and Post Office
- Community events and Parish communications
- Tourism activities
- Roads, transport, traffic and parking
- The countryside and environment
- Rights of way
- Saving and generating energy

Astley Abbots Parish Plan

A Parish Plan has recently been completed. The following has been identified as community needs and priorities:

- Road Safety- speed reduction and road safety measures including key project of providing footpath between village and Cantreyn
- Communication- parish newsletter & website, regular articles in local press
- Housing- carry out housing needs survey
- Take on highway maintenance scheme and improve appearance of parish
- Community safety
- Improve community identity
- Environment
- Refuse collection
- Children & young people

Aston Botterell, Burwarton and Cleobury North

No Parish Plan currently exists.

Chetton

No Parish Plan currently exists.

Deuxhill, Glazeley and Middleton Scriven

No Parish Plan currently exists.

Billingsley

No Parish Plan currently exists.

Eardington

The Parish have expressed an interest in developing a Parish Plan, further updates will be provided in due course

Morville Acton Round, Aston Eyre, Monkhopton and Upton

A Parish Plan for Morville, Acton Round, Aston Eyre, Monkhopton and Upton exists, further information will be provided in due course.

Quatt Malvern

Interest in developing a Parish Plan has been expressed, further updates will be provided in due course.

Stockton Parish Action Plan

The following have been identified as community needs and priorities within the Stockton Parish Action Plan:

- Speeding traffic on A442 through Norton and overtaking on double white lines
- Lack of police presence to enforce speed limits in Norton
- Speeding and large agricultural vehicles on Cheswardine Lane
- Speed of vehicles on narrow drive to Apley Home Farm
- Lack of appropriate parking for bowls club and Village Hall
- Poor road surface on A442 causing increased noise
- Road maintenance Astol Lane and 13-21 Cheswardine Lane.
- Footpath needed to Apley Farm Shop from Astol Crossroads
- Verge maintenance has deteriorated since change of contractor
- Street signs needed for 1, 2 & 3 Jubilee Cottages, Norton
- Improved bus service between Telford and Bridgnorth
- Too many road signs in Norton
- Poor state of village pond in Norton
- Poor state of stocks
- Centre of Norton to be kept tidier
- Development Plan for waste and infill areas in Norton to include provision of more bungalows
- Need for improved integration of newcomers to parish
- Provision of Youth Club for younger residents
- Church is not a focal point and is not well supported
- Parish website needed
- Community Safety- burglaries
- Rights of Way not always maintained across fields
- Norton Village Hall
- Jubilee Play Park

- Mothers & Toddlers Group
- History and country environment

Sutton Maddock

No Parish Plan currently exists.

Tasley

No Parish Plan currently exists, but the Parish Council have expressed an interest in developing a Parish Plan, further updates will be provided in due course.

Worfield and Rudge Parish Council

The Parish Council have expressed an interest to revisit and possibly update their existing Parish Plan in the year 2018. (As agreed by Worfield & Rudge PC in 2014)

Local Joint Committee

Bridgnorth, Alveley, Quatt Malvern, Claverley, Tasley, Astley Abbots, Worfield, Stockton and Sutton Maddock are located within the Bridgnorth, Worfield, Alveley and Claverley Local Joint Committee Area. The following needs and priorities have been raised by the local community as part of Local Joint Committee meetings:

Bridgnorth, Worfield, Alveley and Claverley Local Joint Committee

- Road safety, speeding and HGVs
- Police and community safety
- Streetscene and litter – Keep Britain Tidy pilot Scheme
- Traffic management for events
- The re-opening of the operating theatre at Bridgnorth Hospital
- Knotweed along the river
- Correct use of Byways and footpaths.

Ditton Priors, Neenton, Morville, Aston Botterell, Deuxhill, Glazeley and Middleton Scriven, Chetton, Eardington are located within the *Brown Clee* Local Joint Committee Area. The following needs and priorities have been raised by the local community as part of Local Joint Committee meetings:

Brown Clee Local Joint Committee

- Road Safety, speeding, HGVs
- Youth opportunities, facilities
- Adult services, elderly services

Stottesdon and Billingsley are located within the Cleobury and Rural Local Joint Committee Area. The following needs and priorities have been raised by the local community as part of Local Joint Committee meetings:

Cleobury and Rural Local Joint Committee

- Road Safety, speeding, HGVs
- Youth opportunities, facilities
- Police and Community Safety
- Housing needs
- Flooding
- Highways
- Waste
- Health care provision (especially a new doctors surgery)
- The local economy, broadband and tourism

Other Community Consultations

Local Development Framework Core Strategy- Policy Directions Consultation (August-October 2009)

Tasley Parish Council representations on the Core Strategy (Representation reference no CORESTRATEGY 002447/00001/010)

- Vital need for an educational/ vocational training centre to cater for the eastern region

Worfield and Rudge Parish Council representations on the Core Strategy (Representation reference no CORESTRATEGY 002467/00002/003)

- Improved transport services in the rural communities.

Local Development Framework Site Allocations and Management of Development DPD (SAMDev) – Issues and Options Consultation (April- June 2010)

Bridgnorth Town Council representations on the SAMDev

(Representation reference no SAMDEV DPD/04IOP/06116/00001)

- Greater emphasis on the needs of local people and young people
- Retention of young people in the town
- Appropriate housing that meets the needs of the young
- Affordable housing and employment opportunities should match the number of dwellings being built
- Land be set aside for employment and the encouragement of new businesses to locate in the area

Ditton Priors Parish Council representations on the SAMDev

(Representation reference no SAMDEV DPD/04IOP/002361/00003)

- Readopt the Severn Valley Railway as a rail link
- Improvements to the Bridgnorth to Ludlow Road and then allow access to the industrial estate/former military depot and Ditton Priors from that road
- The access roads to Ditton Priors are poor a two carriage road from Monkhopton would make access to the village easier.
- Any increase in the number of residents may lead to the doctors surgery requiring expansion
- Improved leisure facilities for younger people.
- Traffic calming within the whole community.

Alveley and Romsley Parish Council representations on the SAMDev

(Representation reference no SAMDEV DPD/04IOP/002308/00001)

- Development within Alveley should only be by infill within the village area

Claverley Parish Council representations on the SAMDev

(Representation reference no SAMDEV DPD/04IOP/002346/00005)

- Small scale affordable housing
- Large scale insensitive development is not sustainable and not wanted in the Parish.

Tasley Parish Council representations on the SAMDev (Representation reference no SAMDEV DPD/04IOP/002447/00002)

- Progressive 30mph signs to emphasise the recent reduced limit on Wenlock Road to junction with Ludlow Road. (formerly unrestricted 40mph)
- Need for improvement at the Y junction, Innage Lane/Broseley Road. Mirrors?
- Footway required

Worfield Parish Council representations on the SAMDev (Representation reference no SAMDEV DPD/04IOP/002467/00003)

- There is a need for additional places at Worfield School.

Investing in Shropshire's Future- Local Infrastructure and Investment Workshop with Bridgnorth Town Council (20th September 2010)

- Lack of local employment opportunities with a lot of the residents commuting.
- Rumours of the relocation of Novelis, a major employer in the town.
- Rental costs on properties on the town centre are too high for local businesses.
- Lack of suitable accommodation for tourists, there is a dominance of smaller establishments but nothing large or named.
- The Bridgnorth theatre 'Theatre on the Steps' is a good asset for the town but has poor access. There is no disabled access and older people find the steps difficult.
- The river and the nearby pathways are underused. There is an existing public right of way on the west of the River leading to the Severn Park which could be made more of.
- The Severn Way long distance path to the western edge of the river is poorly advertised.
- Improvements to the leisure centre needed.
- Transport links are poor with no railway station and roads to Shrewsbury, Kidderminster and Stourbridge being of poor quality.
- Traffic problems when commuters travelling home.
- Lack of parking in the town centre, particularly for coaches.
- A lack of affordable housing.

Bridgnorth Community Toolkit Event – 4th November 2010

The following activities, facilities, services and infrastructure were considered to be the most important community assets by the event attendees:

Activities:

- Arts and heritage events
- Children and family activities
- Youth groups and clubs

Facilities:

- Parking
- Places of worship
- Youth shelter or pod

Services:

- Learning and training opportunities
- Police/ emergency services
- Toilets

Infrastructure:

- Broadband speed and connectivity
- Job opportunities
- Tourism and heritage infrastructure

The following points were raised by members of the community as ideas for projects to revitalise the town:

The River

- Enhance quayside
- Navigation in the winter. Which will provide jobs and tourist development.
- Safe storage for cyclists – visitors on riverside. Route 45!
- Riverside maintenance and works
- Hydro electricity generation in the river (Street Lights)

Shops & Services

- Erect a high level translucent roof over half of High Street (set higher than eaves of adjacent buildings, for access). This would be the first such mall in the country.
- Low Town where half of Bridgnorth reside – need outreach services/doctors/chemists/banks/etc.
- Chemist for Low Town
- Information board/map at every car park entrance showing where other car parks are and toilets, hospital, police
- Park and Ride from Tasley
- More bus shelters
- Better public toilets
- Good toilet facilities in Severn Park Low Town for visitors parking cars, playing football, kids playground
- Smaller sweepers for street cleansing

Leisure Facilities

- More sports pitches or refurbish existing sports facilities
- Replacement leisure centre (open on Bank Holidays)
- Assist dry bar/youth club to open more often

Development

- Crematorium
- Youth centre in Low Town
- Assist new day club/ drop in centre
- Land know as Tainter Hill (owned by Apley Estate) use as open space and landscaped (between Hollybush Road and Listley Street)
- Severn Park and Rugby Club: Joint clubhouse and visitor centre and coffee bar at the top of the park by the entrance and the boundary with the Rugby Club
- 40/50 bed hotel including parking
- Buy land and give to company to build a multi storey (facilitate)
- Build a floor in Castle Hall and make office space
- More use for the Castle Hall
- Refurbish and repair St James Hall

The following idea was received after the event:

A north-south bypass (A442), commencing at the bottom of Newton Bank and finishing at the end of the old Worcester Road. All the road is already in existence but obviously the civil engineers would have to do a great deal of work to bring it all up to standard. We would also have to ignore the (EU) Brussels obsession that only East West roads can be built

Full information and feedback from the Bridgnorth Toolkit event is available at:

<http://www.shropshire.gov.uk/factsfigures.nsf/open/C6BE79E370240015802577760045C7C5>

Brown Cleve Community Toolkit event- 14th July 2011

(Covering Aston Botterell, Burwarton and Cleobury North, Billingsley, Deuxhill and Glazeley and Middleton Scriven, Chelmarsh, Chetton, Ditton Priors, Eardington, Morville, Acton Round, Aston Eyre, Monkhopton and Upton Cressett and Neenton).

The following activities, facilities, services and infrastructure were considered to be the most important community assets by the event attendees:

Activities

- Youth groups and clubs
- Children and family activities
- Sports activities
- Walking and rambling activities

Facilities

- Café/pub/restaurant
- School
- Community centre/village hall
- Garage
- leisure facilities

Services

- Toilets
- Healthcare
- Learning and training opportunities
- Post officer services
- Shops

Infrastructure

- Broadband speed and connectivity
- Walking and cycling networks
- Job opportunities
- Housing opportunities

Alveley and Romsley Community Toolkit Event – 17th April 2010

The following activities, facilities, services and infrastructure were considered to be the most important community assets by the event attendees:

Activities:

- Preservation of green belt
- Arts and heritage events
- Senior citizens groups and clubs
- Youth groups and clubs
- Children and family activities

Facilities:

- Community centre/village hall
- School
- Open spaces and play areas

Services:

- Healthcare
- Post office services
- Shops

Infrastructure:

- Housing opportunities
- Regular public transport

- Water drainage and flood measures
- Road improvements
- Broadband speed and connectivity

Full information and feedback from the Alveley and Romsley Toolkit event is available at:

<http://www.shropshire.gov.uk/factsfigures.nsf/open/C6BE79E370240015802577760045C7C5>



APPENDIX B: BRIDGNORTH PROFILE

Social & Demographic Characteristics

Source: 2011 Census, Office for National Statistics, © Crown Copyright 2015.

- In 2011, there were 23,691 residents in the Bridgnorth Place Plan Area, an increase of 8.2% since 2001. The population of Shropshire Unitary Authority increased over the same period by 8.1%.
- Bridgnorth Place Plan Area had a slightly larger working age (18 to 64) population (59.4%) than the Shropshire average (59.3%). The older resident population was more significant than in Shropshire, with 22.6% of residents aged 65 and over (20.7% in Shropshire) and 2.9% aged 85 and over (2.7% in Shropshire).
- In the Place Plan Area in 2011, there were 7,262 families. 1.2% of these families (85 families) were concealed families, a slightly lower proportion than in Shropshire (1.3%).
- 99.1% of residents (22,920 residents) aged 3 and over spoke English as their main language, this is a higher proportion than the Shropshire average (97.9%). The most spoken languages apart from English included Polish (38) and French (16). Of the 205 residents (aged 3+) who said that English was not their main language, 18 people could not speak English well and 9 people could not speak English at all.
- The 2011 Census showed that the Place Plan Area had a Black and Minority Ethnic (BME) Group population of 319 (1.3%), a smaller proportion of residents than in Shropshire (2.0%). The largest broad BME groups were Mixed/multiple ethnic groups (135 people, or 0.6%) and Asian/Asian British (132 people, or 0.6%).
- There were 27 communal establishments in the Place Plan Area. 395 people lived in the communal establishments, of which 370 were residents. Almost half of people living in communal establishments were aged 85 and over (194 people or 49.1%).

Business

Source: 2011 Census, Office for National Statistics, © Crown Copyright 2015.

- Bridgnorth supports a workforce of approximately 4,600 (BRES 2010, Office for National Statistics, © Crown Copyright 2012).
- Manufacturing is an important employer in Bridgnorth, accounting for 18.9% of jobs. This compares with a Shropshire average of 11.6%.
- Also accounting for a higher than average share of jobs are retail (14.3% compared to 11.9% in Shropshire) and accommodation and food services (8.2% compared with 6.7%).
- In contrast, fewer Bridgnorth employees work in health (9.5% compared with 17.5%).
- 12,608 people (or 63.1% of the 16+ population) in the Place Plan Area were economically active, compared to 63.5% in Shropshire. Over a fifth of economically active people in employment (aged 16+) were self-employed (22.2% compared to 19.4% in Shropshire).
- Over a quarter of households in Bridgnorth Place Plan Area had no adults in employment (3,284 households or 32.0% compared to 33.3% in Shropshire).

- Over a quarter of residents aged 16+ (26.8%) were retired compared to 25.4% in Shropshire. A smaller proportion in the Place Plan Area were unemployed but available to work compared to Shropshire (2.6% and 3.3% respectively).
- 12.0% of all usual residents in Bridgnorth Place Plan Area provided some form of unpaid care, a slightly larger proportion than the Shropshire average (11.2%). In total 553 residents in the Place Plan Area (2.3%) provided 50 or more hours of unpaid care a week, including 2 young people (0-15 years old) and 266 people of retirement age (65+).
- A larger proportion of residents aged 16+ had Level 4 and above qualifications, e.g. a degree, higher degree or higher level NVQ, compared to the Shropshire average (28.6% and 27.5% respectively). 23.3% of residents had no qualifications, compared to 22.5% in Shropshire.
- Over two-fifths (43.3%) of the population aged 16+ and in employment the week before the Census worked in standard occupation classifications 1-3 (managers, directors and senior officials, professional, associate professional and technical), compared to 38.8% in Shropshire.
- More than two-fifths of people (16+) in employment the week before the Census travelled 10km or more to work (45.2%) compared with 35.1% in Shropshire.

Housing and Households

Source: 2011 Census, Office for National Statistics, © Crown Copyright 2015.

- In 2011, there were 10,771 dwellings, including 10,258 household spaces with at least one usual resident. The remaining 520 household spaces had no usual residents. At 4.8%, this was a higher proportion than the Shropshire average (4.4%).
- Around two-fifths of dwellings in the Place Plan Area were detached properties; at 40.1%, this was a slightly larger proportion than in Shropshire (39.5%).
- The average household size in the Place Plan Area was 2.3 people per household, the same as the Shropshire average. The average number of bedrooms per household was also the same as in Shropshire (2.9).
- The largest household type in the Bridgnorth Place Plan Area was households with two working age adults (16-64) and no children (20.5% compared to 19.3% in Shropshire).
- 36.6% of all Household Reference Persons (a person selected to represent a whole household in statistics) were aged between 35 to 54 years old (compared to 36.8% in Shropshire).

Transport & Infrastructure

Source: 2011 Census, Office for National Statistics, © Crown Copyright 2015.

- A lower proportion of households (12.7%) were without a car or a van compared with the Shropshire average (15.8%). Households were more likely to have multiple forms of personal transport; 48.6% of households owned 2 or more cars or vans, compared with 42.0% in Shropshire.
- Just over half of 16 to 74 year olds travelled to work either as drivers or passengers in car or van (50.1%), compared with 47.5% in Shropshire.
- 6.4% of people worked mainly at or from home, compared with 5.6% in Shropshire.
- The Severn Valley Railway runs through the Place Plan Area; there is a station for this service at Bridgnorth (<http://www.svr.co.uk/Stations.aspx>).

Natural and historic environment

- There are several conservation areas in the Place Plan area, including Bridgnorth (Innage Gardens), Ditton Priors and Neenton. There are also a number of Listed Buildings, including Church of St. Leonard, Town Hall and Church of St Mary Magdalene, as well as Scheduled Monuments and Registered Parks.
- Within Shropshire Unitary Authority are a number of sites that have been identified and included on the English Heritage 'Heritage at Risk Register' (<http://www.englishheritage.org.uk/caring/heritage-at-risk/>). Within the Bridgnorth Place Plan Area, sites that have been identified include: 48 Mill Street and The Hermitage, Bridgnorth/Worfield.
- The Geopark Way, Hook Walk and Severn Valley Way pass through the area (<http://www.shropshirewalking.co.uk/>).
- Several cycle routes pass through Bridgnorth, including the Mercian Way, from Bridgnorth to Ironbridge. (<http://www.travelshropshire.co.uk/cycle/cycle-routes/market-town-cycle-rides.aspx>).
- The Jack Mytton Way runs nearby the Bridgnorth town (<http://www.shropshireriding.co.uk/>).

Further information about Bridgnorth available online:

- Shropshire Council Facts and Figures: www.shropshire.gov.uk/facts-and-figures/
- UK National Statistics: www.ons.gov.uk/ons/index.html or www.statistics.gov.uk/hub/index.html
- Nomis Profiles (Labour Market statistics): www.nomisweb.co.uk/