

**Shropshire's Approach to the Prevent
Duty**



1. Introduction

The UK faces a range of terrorist threats. Currently the most serious is from the Islamic State extremists behind the creation of a modern caliphate; their affiliates; Al-Qa'ida and like-minded organisations. However, terrorists associated with the extreme right also pose a continued threat to our safety and security. All terrorist groups which seek to radicalise and recruit people to their cause pose a threat: whilst the percentage of people who are prepared to actively support violent extremism in the UK is very small, it still poses a threat to our sense of safety, well-being and damages cohesion.

2. The National Prevent Strategy and the Prevent and Channel Duties

2.1 The National Prevent Strategy (2011) is part of the Government's Counter Terrorism Strategy called CONTEST. The aim of the Prevent Strategy within CONTEST is to reduce the threat to the UK from terrorism by stopping people becoming terrorists or supporting terrorism. The four elements of CONTEST are:

- **Pursue:** is about detecting and disrupting threats of terrorism. It is targeted at those who have committed or who are planning to commit a crime;
- **Protect:** is concerned with strengthening the country's infrastructure from an attack including reducing the vulnerability of the transport network and improving security for crowded places;
- **Prepare:** focuses on areas of the infrastructure where an attack cannot be stopped and the aim is to reduce the impact of an attack by preparing to respond effectively;
- **Prevent:** is an early intervention process and operates in the "pre-criminal space" It aims to stop people becoming terrorists or supporting terrorism.

The basis of Prevent is simple: it is about keeping our communities safe from extremists. It does not carry a pre-conceived idea of who an extremist is, or their message, but it has to be responsive to the prevailing national and international situation.

2.2 The Prevent Duty: Section 26 of the Counter-Terrorism and Security Act 2015 (the Act) places a duty on certain bodies ("specified authorities" listed in Schedule 6 to the Act), in the exercise of their functions, to have "due regard to the need to prevent people from being drawn into terrorism". The duty does not confer new functions on any specified authority. The term "due regard" means that the authorities should place an appropriate amount of weight on the need to prevent people being drawn into terrorism when they consider all the other factors relevant to how they carry out their usual functions.

Source: <https://www.gov.uk/government/publications/prevent-duty-guidance>

2.3 The Channel Duty: Sections 36-41 of the Counter-Terrorism and Security Act 2015 sets out the duty on local authorities and partners to provide support for people vulnerable

from being drawn into terrorism. In England and Wales this duty is the Channel programme. As part of this duty, specified authorities and other key partners need to protect individuals by adopting a multi-agency approach (the Channel Panel) which will:

- a. identify individuals at risk;
- b. assess the nature and extent of that risk; and
- c. develop the most appropriate support plan for individuals concerned.

Source: [ChannelDutyGuidanceApril2015.pdf](#)

3. Other Duties

3.1 Equality Act 2010: The Equality Act 2010 bans discrimination (unfair treatment) in order to achieve equal opportunities in the wider society. The Act brought together and replaced previous equality legislation, such as the Disability Discrimination Act 1995 (DDA), the Race Relations Act 1976 and the Sex Discrimination Act 1975. It simplified and updated the law, and strengthened it in important ways. The Equality Act protects people from discrimination because of certain 'protected characteristics'. Protected characteristics are: age, disability, gender reassignment, marriage and civil partnership, pregnancy and maternity, race, religion or belief, sex and sexual orientation.

3.2 Safeguarding: is the process of protecting vulnerable people, whether from crime, other forms of abuse or (in the context of this document) from being drawn into terrorism-related activity. 'Safeguarding vulnerable people from radicalisation is no different from safeguarding them from other forms of harm' (Prevent Strategy – Home Office)

3.3 Teachers Standards: Schools should promote the fundamental British values of democracy, the rule of law, individual liberty, and mutual respect and tolerance of those with different faiths and beliefs. This can help schools to demonstrate how they are meeting the requirements of section 78 of the Education Act 2002. Actively promoting the values means challenging opinions or behaviours in school that are contrary to fundamental values. The Teachers' Standards expect teachers to uphold public trust in the profession and maintain high standards of ethics and behaviour, within and outside school.

3.4 Human Rights Act: This law was passed in 1998. Human rights law requires the State to take steps to protect the right to life – which includes measures to prevent terrorism. However, any measures taken to counter terrorism must be proportionate and not undermine democratic values. Included in the Human Rights Act is the protection of an individual's freedom of thought, religion and belief; an individual's freedom of speech and peaceful protest; and individual's right to be treated fairly regardless of their gender, race, sexuality, religion or age.

Shropshire's Prevent Aim and Objectives

Our aim is to prevent people being drawn into terrorism and to support local communities and institutions to challenge and reject the message of extremism

Shropshire is judged to be a low risk area, but it is important not to be complacent. Together we need to promote strong and positive relationships between people from different backgrounds in the workplace, schools and within communities.

Terrorism is a low threat in Shropshire. The highest risk is from a 'lone actor', who is particularly difficult to both detect and identify. In such cases, the internet and social media have proven to be powerful tools for extremists to radicalise individuals. There is a particular concern that vulnerable people may be at risk of radicalisation through the influence of others or via the internet, including ideas and issues around their identity. A proportionate response will need to be developed to mitigate any threat, risk or harm posed to vulnerable adults, children and communities from extremist groups. This includes recognising CONTEST work including 'the Prevent duty' is inextricably linked to other main safeguarding issues such as vulnerability and Hate Crime.

5. Our Objectives

Our objectives are:

- Embedding Prevent into the mainstream by supporting key services and institutions; and
- Building long term resilience within communities.

6. The Practical Application of Prevent in Shropshire

6.1 Local Implementation

In order to raise awareness of PREVENT beyond the specific duties of the specified authorities, this strategy sets out what authorities and other key partners will do as part of a joined up and multi-agency approach to Prevent in Shropshire. The strategy will be co-ordinated through the Shropshire Community Safety Partnership, with links to the Safeguarding Boards for Adults and Children and the Health and Well Being Board. The Strategy will be reviewed on an annual basis and will focus on the following:

- a) Provide reassurance that at a county level there are effective mechanisms in place to ensure Shropshire is meeting its Prevent Duty;
- b) Share good practice on staff training and workforce development;
- c) Have a co-ordinated approach to the support available in the county;
- d) Ensure effective communication and raise awareness of the Duty and the risks in Shropshire;
- e) Oversee the work of the Channel Panel and identify areas of learning;
- f) Respond to the risks identified in the local counter terrorism profile;
- g) Support community cohesion activities aimed at building resilience, which will assist in preventing radicalisation and extremism.

7. Turning Strategy into Action

The Shropshire PREVENT Action Plan has been designed to make the national strategy relevant at a local level, as well as ensuring that there is a multi-agency approach to the Prevent Duty. In particular the following work streams have been identified:

1. Leadership, governance and accountability – to ensure a co-ordinated multi-agency approach to addressing the risks in Shropshire and meeting the Prevent Duty;
2. Support individuals - to provide support for people vulnerable to being drawn into terrorism, recognising the wide range of ways by which individuals may be influenced;
3. Building partnership and trust with communities – to raise awareness and to challenge extremism;
4. Intelligence and communications – to raise awareness of Prevent and monitor and respond to community tensions.
5. Awareness, learning and development – to have a joined up approach to training on Prevent and wider community cohesion issues;
6. Educating young people – to support the development and delivery of a range of appropriate educational packages, which promote dialogue and understanding and support young people to develop their critical thinking skills in relation to the information they access;

For the purposes of this document the following definitions have been adopted:

Radicalisation is defined as the process by which people come to support terrorism and extremism and, in some cases, then participate in terrorist groups.

Extremism is vocal or active opposition to fundamental British values, including democracy, the rule of law, individual liberty and mutual respect and tolerance of different faiths and beliefs.

Terrorism is an action that endangers or causes serious violence to a person/people; causes serious damage to property; or seriously interferes or disrupts an electronic system. The use or threat must be designed to influence the government or to intimidate the public and is made for the purpose of advancing a political, religious or ideological cause.

PREVENT Action Plan

Leadership, governance and accountability – to ensure a co-ordinated multi-agency approach to addressing the risks in Shropshire and meeting the Prevent Duty

No	OBJECTIVE	CURRENT ACTIVITY	AGENCY / PARTNERSHIP	ACTION	RAG
1	A central reporting mechanism for identifying extremist behaviours and onward dissemination as appropriate.	COMPASS provides a single point of access for new safeguarding enquiries, COMPASS also provide consultation to those professionals working with families and vulnerable young people at an early help level. Through COMPASS the LA can gather information that may indicate a level of risk or emerging risk that would require a multi-agency approach.	Shropshire’s Children’s Services Safeguarding	Establish a single point of contact for agencies and one referral form for reporting individuals who might be referred through the Channel process (see Appendix 1).	
2	Tasking processes to identify and deploy resources in ASB hotspot areas.	Monthly multi agency Bronze Level Tasking meetings that address ASB at a local level. Encourage an increased reporting of Hate Crime / Incidents to the Police and at Bronze Level Tasking and Third Party Reporting Centres	Community Safety Partnership	Partners to be aware of those areas selected for refugee placement – particularly the demography of the area and any ongoing tensions in order to lessen any likely community tensions or right wing attention on these vulnerable communities.	

No	OBJECTIVE	CURRENT ACTIVITY	AGENCY / PARTNERSHIP	ACTION	RAG
3	<p>Ensure there is a robust and comprehensive collection of hate incident data from all partner agencies to enable detailed analysis.</p> <p>A mechanism for monitoring community tension so that agencies can work to understand the nature of hate incidents and enhance community cohesion thus ensuring an effective partnership response.</p>	<p>There are a number of hate crime reporting centres across the County. Community tension is monitored in liaison with Police and partners including Bronze Level Tasking.</p> <p>Incidents /information regarding hate crime is communicated appropriately and effectively</p> <p>All schools & colleges should report Hate Crime Incidences to the LA. This is currently a little inconsistent and needs to be highlighted to all schools for a clear & consistent data analysis</p>	<p>Community Safety Partnership</p> <p>Community Safety Partnership</p> <p>Education/Schools/ Colleges</p>	<p>Improve the exchange of information between partners in order to understand and identify tensions at an early stage. Ensure information and data on hate incidents and community tension is shared along with concerns regarding terrorism and extremism.</p>	

Support individuals - to provide support for people vulnerable to being drawn into terrorism, recognising the wide range of ways by which individuals may be influenced

No	OBJECTIVE	CURRENT ACTIVITY	AGENCY / PARTNERSHIP	ACTION	RAG
4	<p>A multi-agency approach to demographic mapping in order to identify any emerging or vulnerable communities.</p> <p>Ensure that briefings take place in order to identify vulnerable communities or individuals and what level of intervention is required to address any signs of radicalisation and extremism</p>	<p>Shropshire Fire and Rescue Service NILO network are briefed by Regional Counter Terrorism Unit and West Mercia Special Branch.</p> <p>Education representative at Hate Crime reporting group and Channel. Also regular prevent and hate crime updates by LA education Officer at schools safeguarding group.</p> <p>Staff have received awareness briefings & WRAP 2 training. WRAP 3 training is currently being delivered. They are aware of the process of identifying vulnerable individuals etc.</p> <p>Monthly multi agency Bronze Level tasking meetings that address help identify vulnerable locations and people.</p>	<p>Shropshire Fire and Rescue Service</p> <p>Education</p> <p>National Probation Service</p> <p>Community Safety Partnership</p>	<p>Improve police and partners knowledge of community demographics, particularly those from vulnerable areas subject to ongoing political and military unrest e.g. Syria / Iraq, in order to facilitate resources to communities requiring additional reassurance or support.</p>	

Building partnership and trust with communities – to raise awareness and to challenge extremism

No	OBJECTIVE	CURRENT ACTIVITY	AGENCY / PARTNERSHIP	ACTION	RAG
5	Utilise publicity campaigns to inform communities of reporting methods, as well as communicating successes achieved.			Develop a communication strategy to raise awareness of the threats poised in Shropshire, such as Lone Actors, in order to empower communities to have confidence to report concerns to the police or partners.	
6	Establish a process to allow the use of PREVENT interventions for those individuals identified as vulnerable to radicalisation and consider its deployment where appropriate.	Channel meetings take place bi-monthly and receive referrals from agencies on individuals they think are in danger of being radicalised.	Community Safety Partnership	Continue to raise awareness amongst partner agencies to ensure that vulnerable individuals are identified and referred where appropriate. There will be a particular focus on education providers, and those services engaging with young people and mental health services.	
7	<p>Monitor intelligence relating to violent extremism and radicalisation in order to identify any emerging threats / vulnerabilities.</p> <p>Create a mechanism for effective Counter Terrorism intelligence sharing between Police and Children’s services (including Education, Social Services and Youth Services).</p>	Children’s services have started to ask a specific question on the referral form around radicalisation, this will enable data collection in the future to help us better understand the level of need.	Shropshire’s Children’s Services Safeguarding	Engage with vulnerable individuals to develop an understanding of the radicalising influence of online material, its scale and prevalence and consider strategies to identify extremist communication and propaganda and deliver effective counter messaging.	

Intelligence and Communications - to raise awareness of Prevent and monitor and respond to community tensions.

No	OBJECTIVE	CURRENT ACTIVITY	AGENCY / PARTNERSHIP	ACTION	RAG
8	Ensure greater information sharing between Police Forces, law enforcement agencies and Local Authorities in surrounding areas in order to identify vulnerabilities which cross Force / Local Authority borders.	<p>Shropshire Fire and Rescue Service NILO Officers are SC security cleared and briefed by Regional Counter Terrorism Unit and West Mercia Special Branch. The NILO group meet with West Mercia FRS NILO and also West Midlands NILO</p> <p>Under care planning regulations local authorities have a duty to consult with the host authority when placing children who are looked after by another authority.</p> <p>Multi-Agency information sharing protocols in place.</p>	<p>Shropshire Fire and Rescue Service</p> <p>Shropshire's Children's Services</p>	Utilise the West Midlands PREVENT leads group in order to make contact with PREVENT leads in neighbouring authorities to find out what work they are currently undertaking and any concerns or issues which may have an impact in Shropshire.	

--	--	--	--	--	--

Awareness, learning and development – to have a joined up approach to training on Prevent and wider community cohesion issues

No	OBJECTIVE	CURRENT ACTIVITY	AGENCY / PARTNERSHIP	ACTION	RAG
9	To raise awareness and understanding of the threat from Domestic Extremism to assist in identifying potential areas of community tension.	<p>Shropshire Fire and Rescue Service NILO group brief Senior Officers and also provide briefings for staff as and when deemed as appropriate. NILO group has previously supported pre planning for English Defence League events.</p> <p>Staff received initial awareness training which included Domestic Extremism. Also, receive supports /advice from PCTL, Midlands Division – West regarding potential community tensions.</p> <p>Highlighted in Raising Awareness in Child Protection training modules delivered throughout</p>	<p>Shropshire Fire and Rescue Service</p> <p>National Probation Service</p> <p>Shropshire Safeguarding</p>	Gather data and information in order to understand the level of support for extreme right wing and left wing groups and organisations in Shropshire. Continue to raise awareness amongst partners of the risks and vulnerabilities associated with domestic extremism.	

		Shropshire in single agencies and to multi-agency audiences.	Children's Board		
--	--	--	------------------	--	--

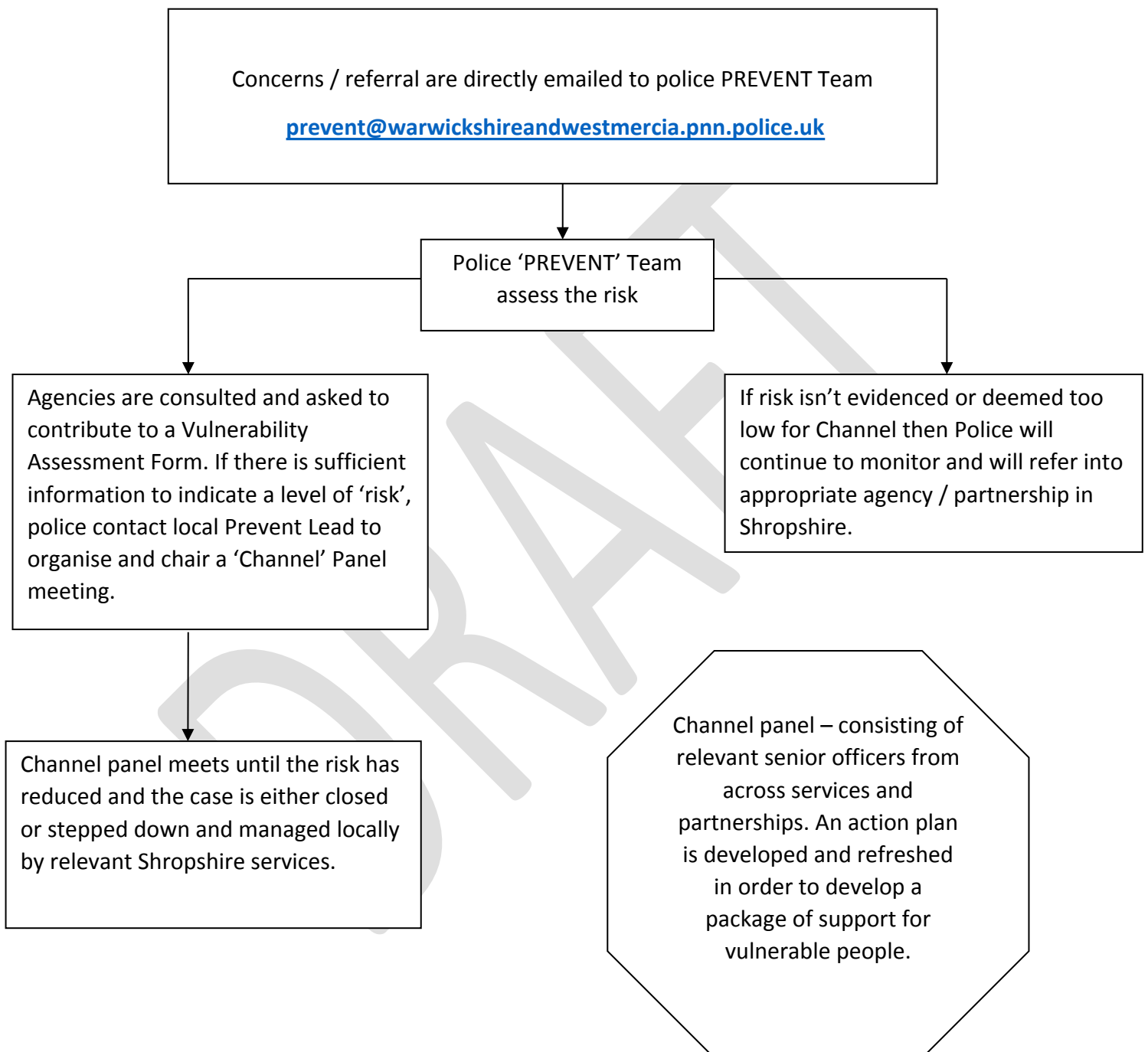
Educating young people – to support the development and delivery of a range of appropriate educational packages, which promote dialogue and understanding and support young people to develop their critical thinking skills in relation to the information they access

No	OBJECTIVE	CURRENT ACTIVITY	AGENCY / PARTNERSHIP	ACTION	RAG
----	-----------	------------------	----------------------	--------	-----

DRAFT

10	<p>A commitment to train staff on identifying suspicious / extremist / radicalising behaviours and the dissemination of relevant information to other agencies.</p> <p>Make effective use of Education PREVENT Interventions in Schools (i.e. WRAP 3 / ACT NOW for Schools and Partnership strategies).</p> <p>An effective training mechanism for briefing all staff involved with the education / social care system for children to enable them to identify radical and/or extremist behaviour in place.</p>	<p>All Operational and Intervention staff at Shropshire Fire and Rescue Service received basic in house training carried out by the NILO Officers.</p> <p>Under care planning regulations local authorities have a duty to consult with the host authority when placing children who are looked after by another authority.</p> <p>Staff trained and process in place to disseminate information.</p> <p>Signs and Indicators highlighted throughout Shropshire Safeguarding Children's Board training modules. SSCB fund E-learning through Virtual College on 'Understanding Pathways to Extremism and the Prevent Programme'.</p>	<p>Shropshire Fire and Rescue Service</p> <p>Shropshire's Children's Services</p> <p>National Probation Service</p> <p>Shropshire Safeguarding Children's Board</p>	<p>Raise awareness amongst staff of the type of extremist media that is prevalent, including use of the internet and high profile books / articles which may be an indicator of more extreme views.</p>	
----	---	--	---	---	--

PREVENT – How the process works when reporting a concern relating to radicalisation / Counter Terrorism



DRAFT